

FOR LEASE > OFFICE SPACE

# 7065 N. Maple Avenue, #104

FRESNO, CALIFORNIA



## Improved Physical Therapy Office Space

Located near the northwest corner of Herndon and Maple Avenues. This physical therapy space includes large open area, treatment rooms, offices, internal restrooms, break room, reception and waiting areas. Restaurant, banking and shopping services are within easy walking distance.

## Building Amenities

- > High Quality, Functional Space
- > Quick Access to Freeways 168 & 41
- > Located in High Density Medical Corridor
- > Rental Rate: \$1.65, NNN, per sq. ft., per month
- > Availability: 3,746 SF

**AGENT: SCOTT BUCHANAN**  
559 256 2430  
scott.buchanan@colliers.com  
BRE #01389446

**AGENT: BEAU PLUMLEE**  
559 256 2443  
beau.plumlee@colliers.com  
BRE #01269167

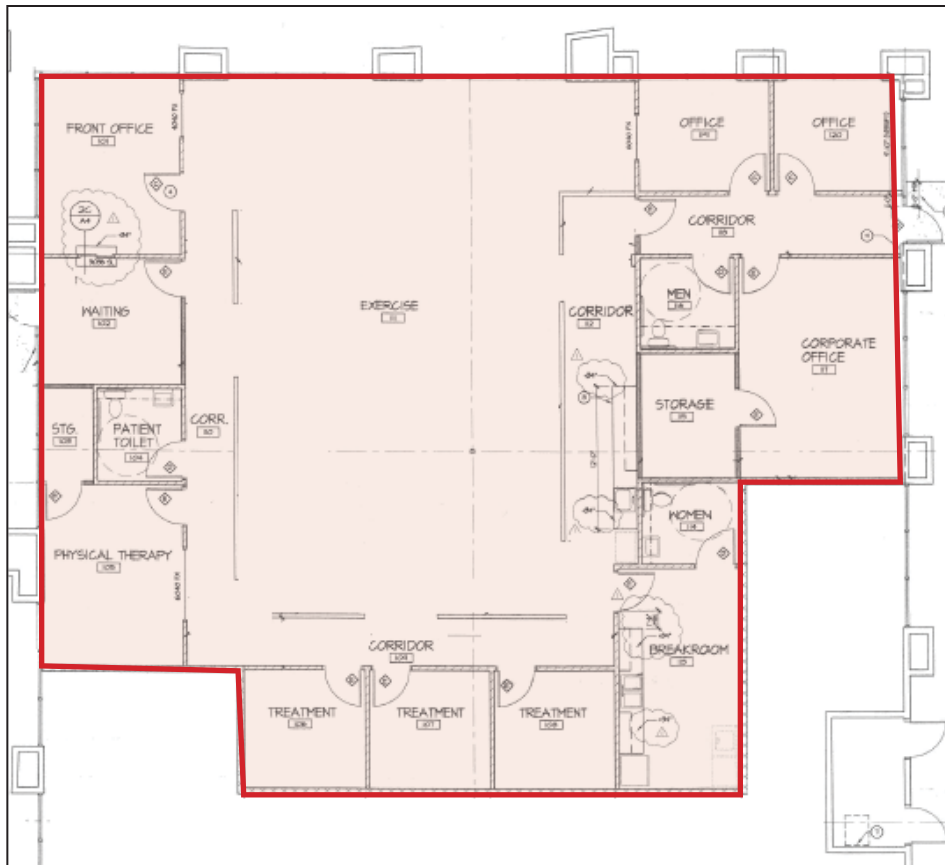
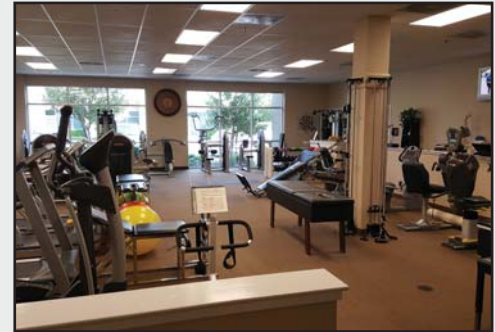
**COLLIERS INTERNATIONAL**  
7485 N. Palm Avenue, #110  
Fresno, CA 93711  
www.colliers.com/fresno

# 7065 N. Maple Ave., #104, Fresno, CA

Floor Plan / Site Plan / Aerial



## Property Photos



This document has been prepared by Colliers International for advertising and general information only. Colliers International makes no guarantees, representations or warranties of any kind, expressed or implied, regarding the information including, but not limited to, warranties of content, accuracy and reliability. Any interested party should undertake their own inquiries as to the accuracy of the information. Colliers International excludes unequivocally all inferred or implied terms, conditions and warranties arising out of this document and excludes all liability for loss and damages arising there from. This publication is the copyrighted property of Colliers International and/or its licensor(s). ©2017. All rights reserved.

