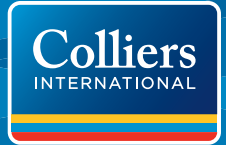


FOR LEASE > RETAIL SPACE

The Terrace

STATE ROUTE 92 AND TRIUMPH BOULEVARD



Property Information

- > Mid Box—15,200 – 25,000 SF
- > Shop Space—1,200 – 5,000 SF
- > Approximately 240,000 SF Neighborhood Retail Shopping Center
- > Interstate 15—156,160
- > State Route 92—23,365
- > Triumph Boulevard—20,460
- > Around 2,000 employees on site and another 2,000 in close proximity

DEMOGRAPHICS	1 MILE	3 MILE	5 MILE
Population			
2016 Estimated	6,372	39,740	122,369
2021 Projected	7,462	45,159	139,474
Households			
2016 Estimated	1,653	9,965	30,469
2021 Projected	1,898	11,265	34,794
Income			
2016 Median HHI	\$81,364	\$79,759	\$82,781
2016 Average HHI	\$101,378	\$95,165	\$101,870
2016 Per Capita	\$26,790	\$23,835	\$25,594
Employment			
Total Businesses	160	764	2,713
Total Employees	3,816	11,085	33,439

Information provided by ESRI Business Analyst Online

Richard Robins, MBA,CSM
+1 801 947 8380
richard.robins@colliers.com

Tony Coop
+1 801 947 8381
tony.coop@colliers.com

Lori Coburn
+1 801 947 8352
lori.coburn@colliers.com

Colliers International
6550 S Millrock Dr | Suite 200
Salt Lake City, UT 84121
P: +1 801 947 8300

FOR LEASE > RETAIL SPACE

The Terrace

STATE ROUTE 92 AND TRIUMPH BOULEVARD



Richard Robins, MBA, CSM
+1 801 947 8380
richard.robins@colliers.com

Tony Coop
+1 801 947 8381
tony.coop@colliers.com

Lori Coburn
+1 801 947 8352
lori.coburn@colliers.com

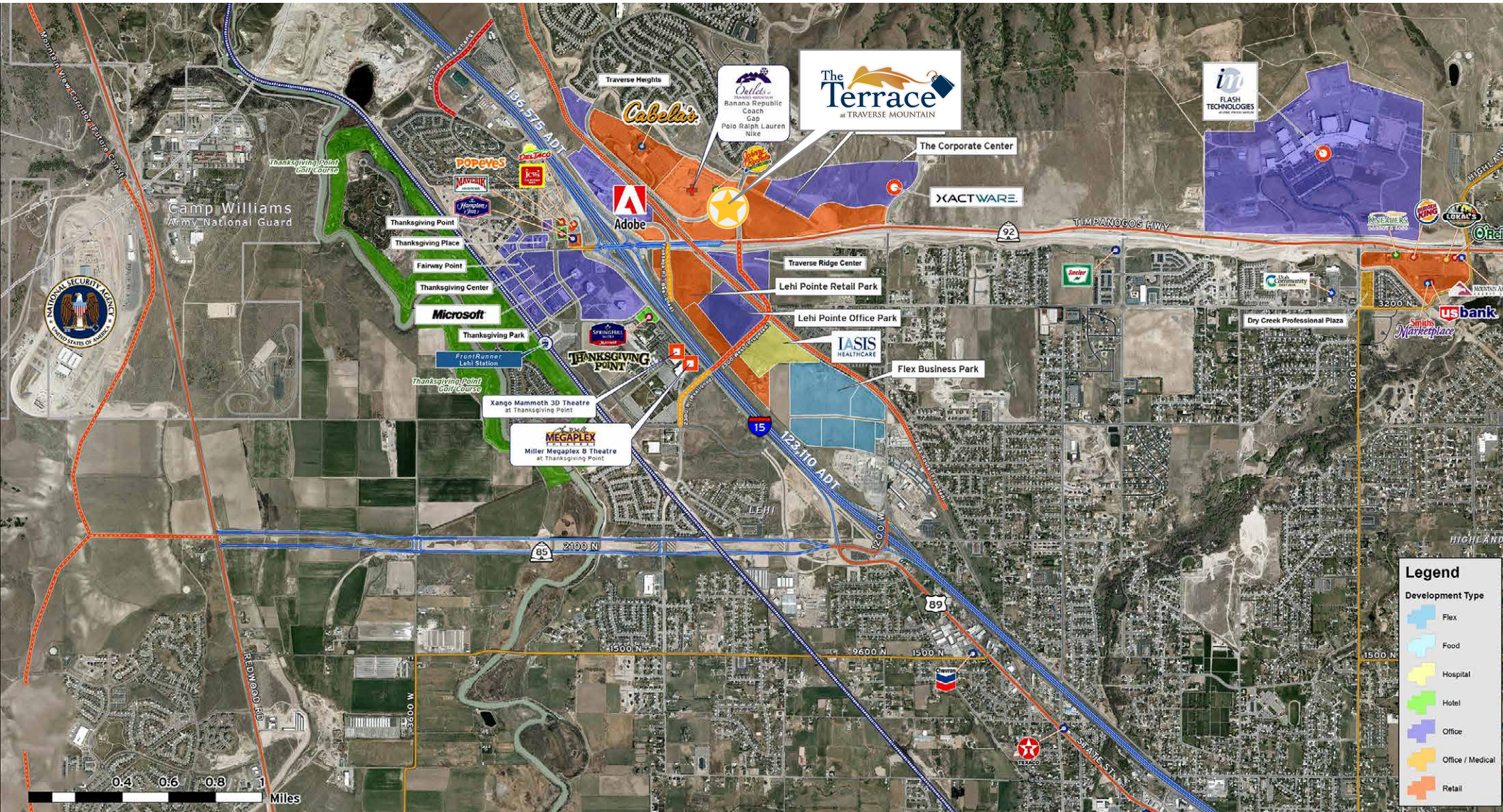
Colliers International
6550 S Millrock Dr | Suite 200
Salt Lake City, UT 84121
P: +1 801 947 8300



FOR LEASE > RETAIL SPACE

The Terrace

STATE ROUTE 92 AND TRIUMPH BOULEVARD



Richard Robins, MBA,CSM
+1 801 947 8380
richard.robins@colliers.com

Tony Coop
+1 801 947 8381
tony.coop@colliers.com

Lori Coburn
+1 801 947 8352
lori.coburn@colliers.com

Colliers International
6550 S Millrock Dr | Suite 200
Salt Lake City, UT 84121
P: +1 801 947 8300



FOR LEASE > RETAIL SPACE

The Terrace

STATE ROUTE 92 AND TRIUMPH BOULEVARD

- UNDER CONSTRUCTION
- LOI SUBMITTED
- LOI SIGNED
- LEASE REVIEW
- LEASE SIGNED
- AVAILABLE

Anchored By:

HARMONS
NEIGHBORHOOD GROCER

Nearby Tenants

ancestry.com

XACTWARE

Cabela's

ORACLE

Outlets
at TRAVERSE MOUNTAIN

IASIS
HEALTHCARE

FLASH
TECHNOLOGIES

Adobe



This document has been prepared by Colliers International for advertising and general information only. Colliers International makes no guarantees, representations or warranties of any kind, expressed or implied, regarding the information including, but not limited to, warranties of content, accuracy and reliability. Any interested party should undertake their own inquiries as to the accuracy of the information. Colliers International excludes unequivocally all inferred or implied terms, conditions and warranties arising out of this document and excludes all liability for loss and damages arising there from. This publication is the copyrighted property of Colliers International and/or its licensor(s). ©2018. All rights reserved.

Colliers International
6550 S Millrock Dr | Suite 200
Salt Lake City, UT 84121
P: +1 801 947 8300

