

FOR LEASE > INDUSTRIAL

# 2218 Statesville Blvd.

2218 STATESVILLE BLVD., SALISBURY, NC 28147



## 2218 Statesville Blvd. >

9,500 square foot industrial facility located on 1.41 acres. With frontage on Statesville Road in Salisbury, North Carolina, this property is available for lease.

Street	Traffic Count
Statesville Blvd.	16,000 VPD

## Site Summary >

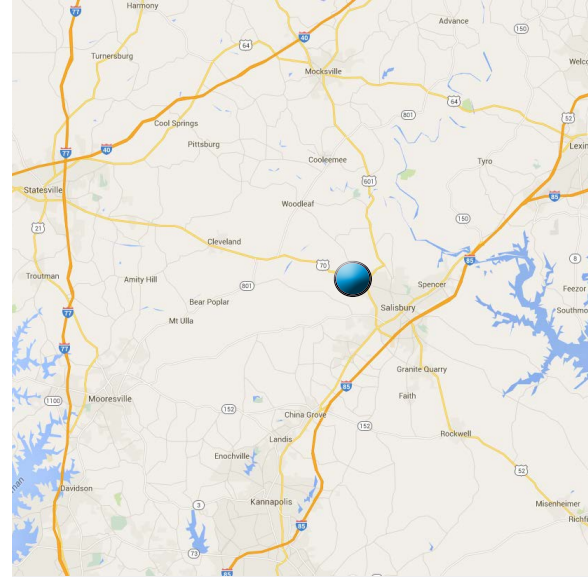
- > ±9,500 Total SF Available
- > ±1.41 Acres
- > ±6,500 SF Warehouse Space
- > Built in 2001
- > ±3,000 SF Office Space
- > City Sewer and Electric
- > Highway Business Zoning
- > (24) Parking Spaces
- > (1) Drive In Door
- > Parcel ID: 331227
- > (1) Dock High Door
- > Lease Rate: \$10.00 PSF (NNN)



STEVE RICH, CCIM  
+1 704 409 2375  
CHARLOTTE, NC  
STEVE.RICH@COLLIERS.COM

COLLIERS INTERNATIONAL  
301 S. College St, Suite 3350  
Charlotte, NC 28202  
www.colliers.com

2218 Statesville Blvd. >



## Contact Us

STEVE RICH, CCIM

+1 704 409 2375

CHARLOTTE, NC

[STEVE.RICH@COLLIERS.COM](mailto:STEVE.RICH@COLLIERS.COM)

COLLIERS INTERNATIONAL  
301 S. College St, Suite 3350  
Charlotte, NC 28202

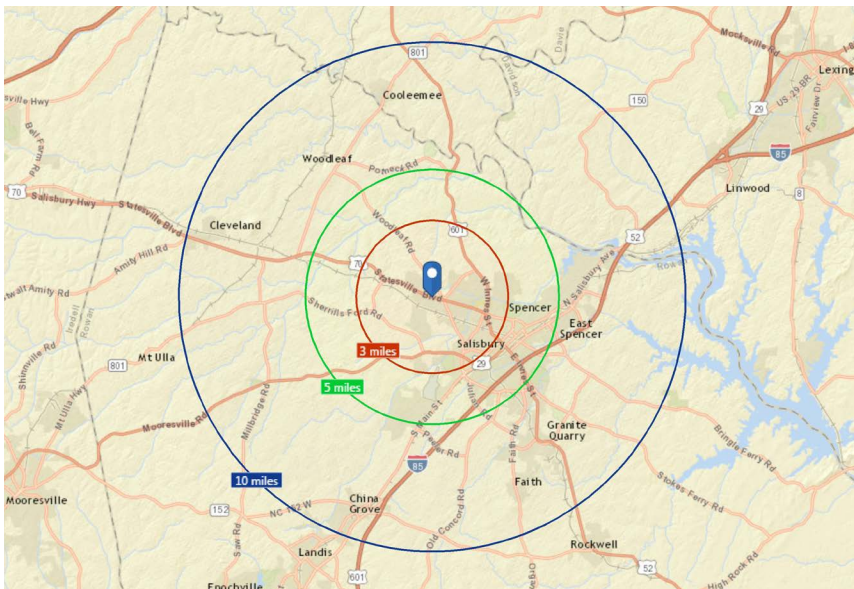
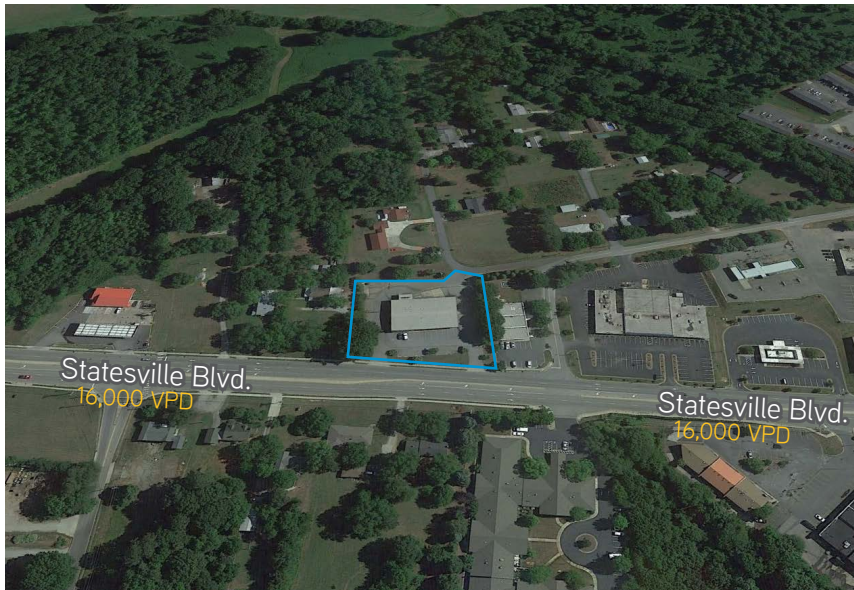
[www.colliers.com](http://www.colliers.com)

The information contained herein has either been given to us by the owner of the property or has been obtained from sources that we deem reliable. We have no reason to doubt its accuracy, but we do not guarantee it. This property is subject to prior sale, lease, price change or withdrawal without notice. Note: Broker participation is welcomed. Compensation is offered to buyer/tenant agent.

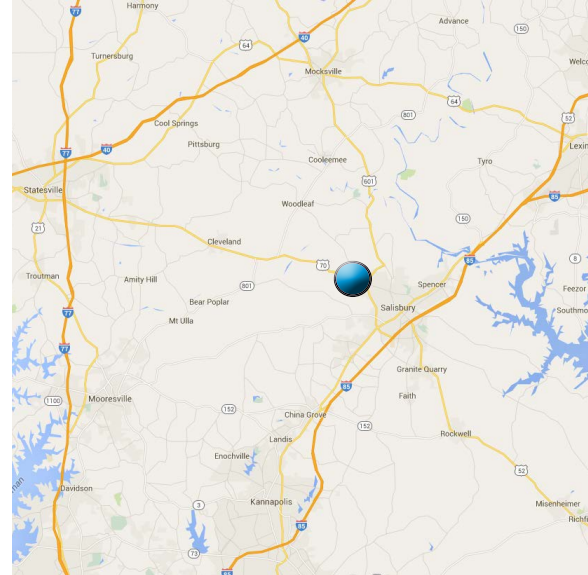




## 2218 Statesville Blvd. >



Demographics	3 Mile Radius	5 Mile Radius	10 Mile Radius
2015 Population	19,702	45,374	99,620
Avg. HH Income	\$54,160	\$53,409	\$56,045
Employees	12,156	33,245	49,000



## Contact Us

STEVE RICH, CCIM

+1 704 409 2375

CHARLOTTE, NC

[STEVE.RICH@COLLIERS.COM](mailto:STEVE.RICH@COLLIERS.COM)

COLLIERS INTERNATIONAL  
301 S. College St, Suite 3350  
Charlotte, NC 28202

[www.colliers.com](http://www.colliers.com)

The information contained herein has either been given to us by the owner of the property or has been obtained from sources that we deem reliable. We have no reason to doubt its accuracy, but we do not guarantee it. This property is subject to prior sale, lease, price change or withdrawal without notice. Note: Broker participation is welcomed. Compensation is offered to buyer/tenant agent.

