

118 Poplar Pointe Drive Mooreville, NC



For Sale ± 11,325 SF



Contact Us:

John Ellis

Senior Associate | Charlotte
+1 704 409 2914
john.ellis@colliers.com

Greg Gosselin

Associate Vice President | Charlotte
+1 336 408 9726
greg.gosselin@colliers.com

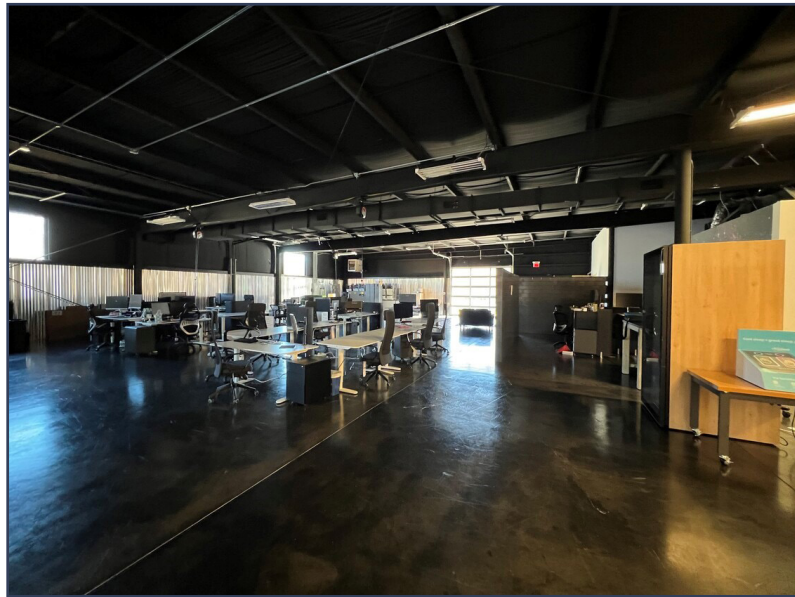
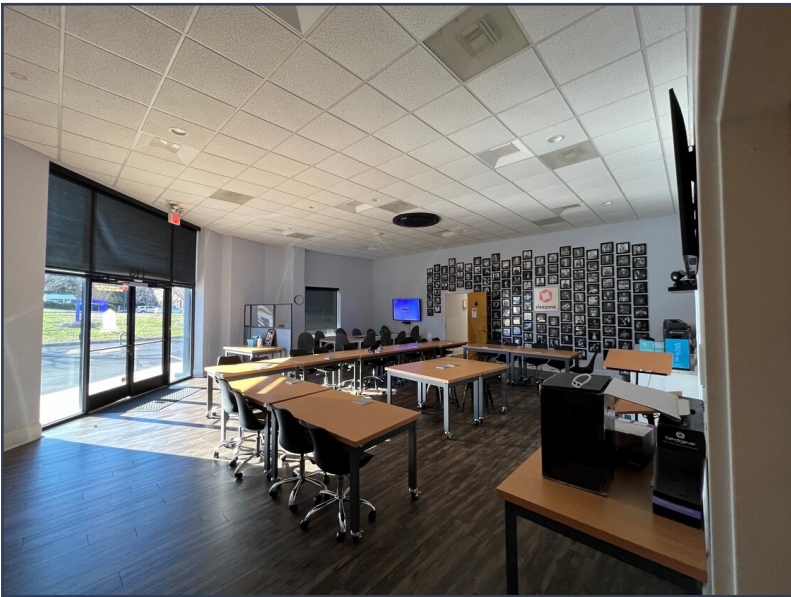
300 W. Summit Avenue
Suite 200
Charlotte, NC 28203
P: +1 704 409 9933

Accelerating success.

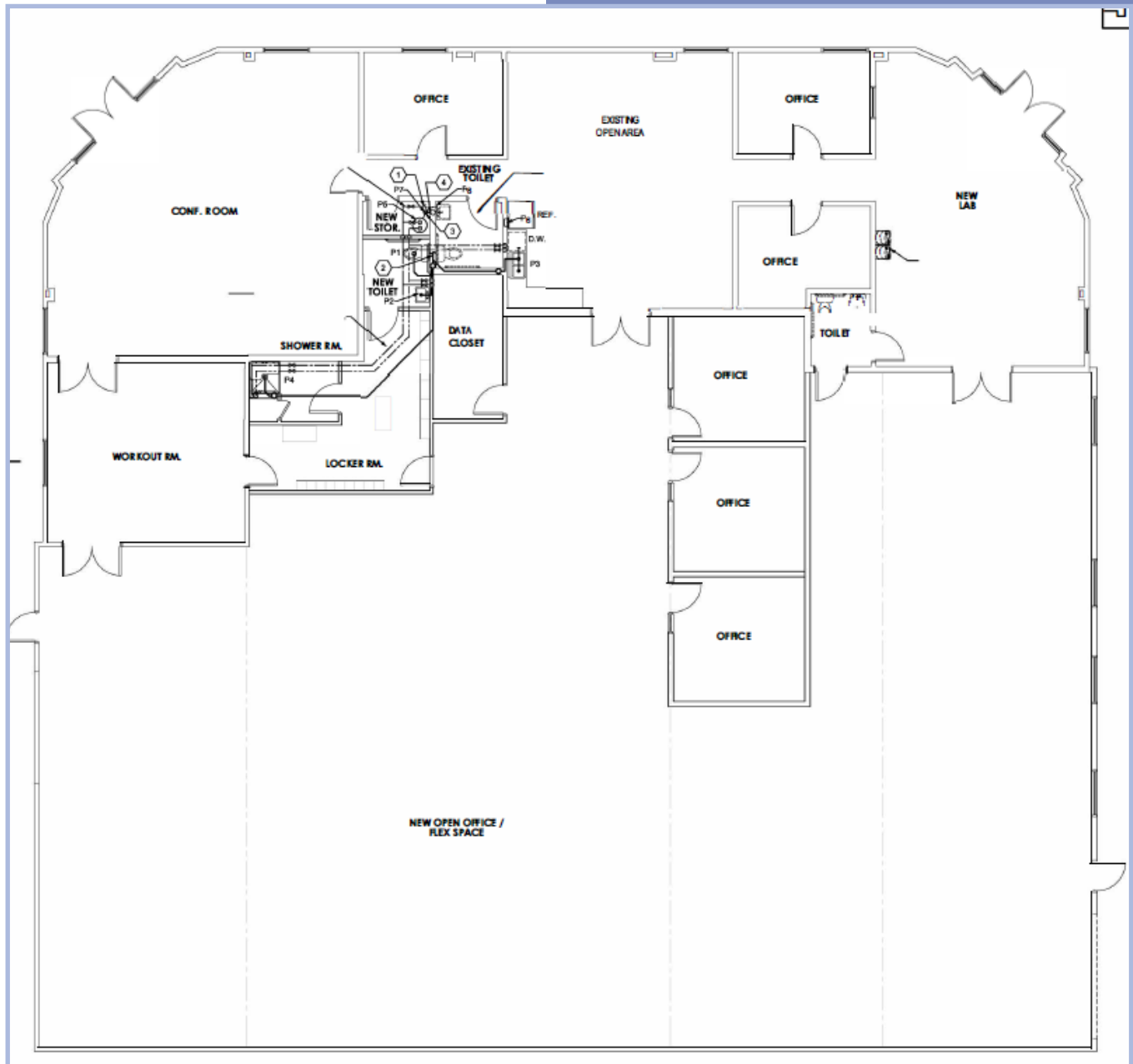
Property Overview

Building SF:	± 11,325 SF	Loading:	(2) Drive-In Doors
Office SF:	± 4,104	Parking:	32
Land Area:	± 1.13 AC	Zoning:	HLI (Hybrid Light Industrial)
Parcel ID:	4657094011	Year Built:	2009
LED:	5/31/2027		

Property Images



Floor Plan



Contact Us:

John Ellis

Senior Associate | Charlotte
+1 704 409 2914
john.ellis@colliers.com

Greg Gosselin

Associate Vice President | Charlotte
+1 336 408 9726
greg.gosselin@colliers.com

Colliers

