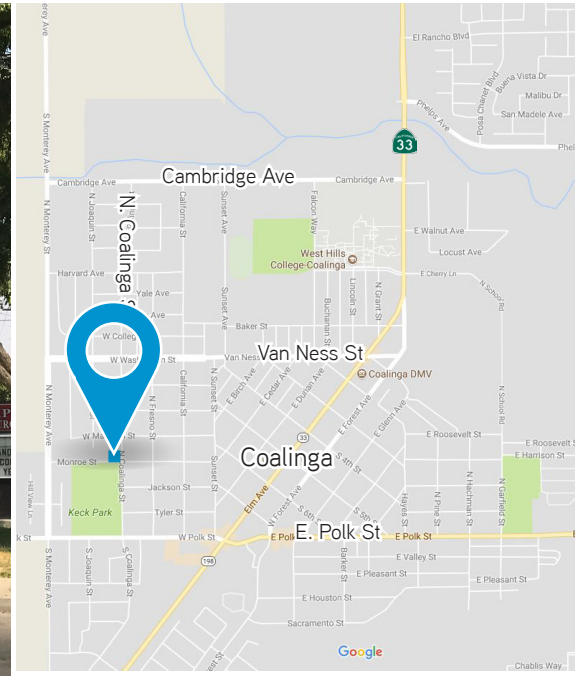


FORMER CHURCH FOR SALE

401 N. Coalinga Street
Coalinga, California 93210



PROPERTY

The subject site is a former church facility located on 1.08 acres of RSS-Single Family Residential zoned land. It is situated at the northwest corner of N. Coalinga and West Monroe Streets in a residential area and across from Keck Park. Comprised of two separate buildings, the subject site totals an approx. 4,884 square feet with improvements including classrooms, offices and main sanctuary.

HIGHLIGHTS

- › FORMER CHURCH FACILITY
- › ZONED RSS IN THE CITY OF COALINGA
- › EXCELLENT LOCATION
- › CONVENIENT INGRESS/EGRESS
- › AVAILABLE NOW!

SALE PRICE

\$510,000.00

DEMOGRAPHIC SNAPSHOT

	1 Mile	3 Mile	5 Mile
Population:	8,329	13,354	13,478
Housing Units:	2,811	4,155	4,202
Employees:	3,538	5,601	5,647
Avg HH Income:	\$61,113	\$63,612	\$63,710 ²⁰¹⁶

estimates, Alteryx.com

AGENT: GARRET TUCKNESS, CLS
SENIOR VICE PRESIDENT |
CENTRAL CALIFORNIA
DIR: 661.631.3811
LICENSE NUMBER 01323185
garret.tuckness@colliers.com

AGENT: JJ WOODS, CLS
SENIOR VICE PRESIDENT |
CENTRAL CALIFORNIA
DIR: 661.631.3807
LICENSE NUMBER 01420570
jj.woods@colliers.com

COLLIERS INTERNATIONAL
10000 Stockdale Hwy., Suite 102
Bakersfield, CA 93311
www.colliers.com/bakersfield

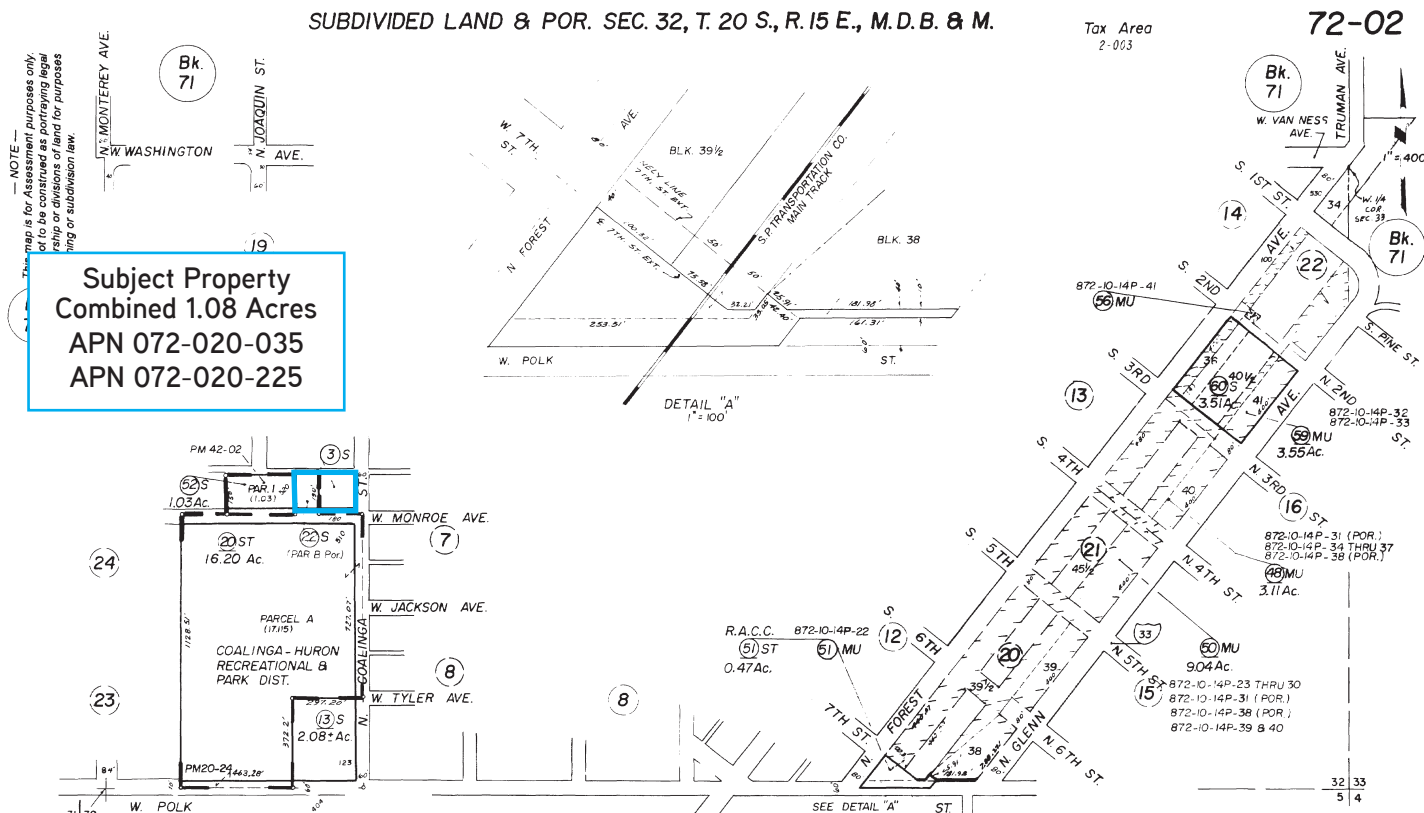
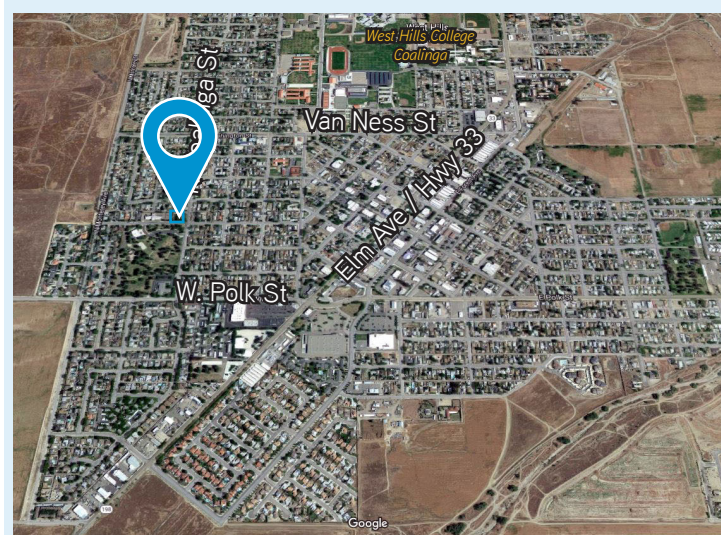
FORMER CHURCH

401 N. Coalinga Street
Coalinga, California

Colliers
INTERNATIONAL

Site Details

Property Address:	401 Coalinga Street, Coalinga, California 93210
Site Area:	Combined 1.08 acres; APN 072-020-035 and 072-020-225
Improvements:	Former church facility
Zoning:	RSS in the City of Coalinga
Building Area:	Total: 4,884sf
Sale Price:	\$510,000.00



Contact Us

AGENT: GARRET TUCKNESS, CLS
SENIOR VICE PRESIDENT |
CENTRAL CALIFORNIA
LICENSE NUMBER 01323185
661 631 3811
garret.tuckness@colliers.com

AGENT: JJ WOODS, CLS
SENIOR VICE PRESIDENT |
CENTRAL CALIFORNIA
LICENSE NUMBER 01420570
661 631 3807
jj.woods@colliers.com

COLLIERS INTERNATIONAL
10000 Stockdale Highway
Suite 102
Bakersfield, CA 93311
www.colliers.com/bakersfield