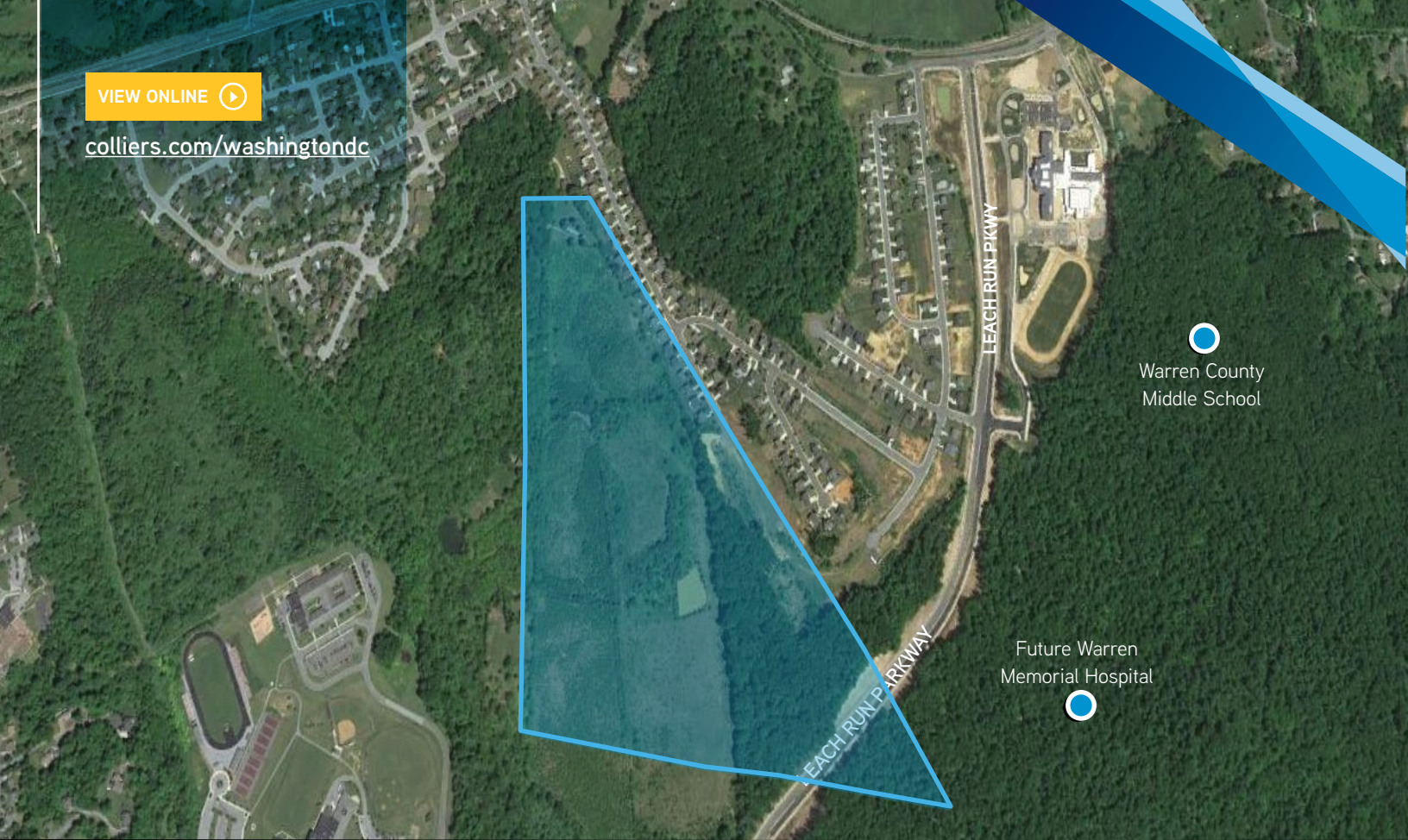


VIEW ONLINE 

colliers.com/washingtondc



Swan Estates

238 Swan Road - Front Royal, Virginia 22630

FEATURES

- 98 acres (54 usable)
- Designated Urban Development Site within Town of Front Royal
- Water & sewer to the site
- Approved for 300 single family lots
- Opportunity for townhome and multifamily development
- 5 miles from Interstate 66
- Adjacent to future Valley Health hospital

Starting from:

\$86,207 / ACRE

Contact us:

Benjamin Luke

Assistant Vice President
+1 703 394 4810
ben.luke@colliers.com

John Lesinski

Executive Vice President
+1 703 394 4846
john.lesinski@colliers.com



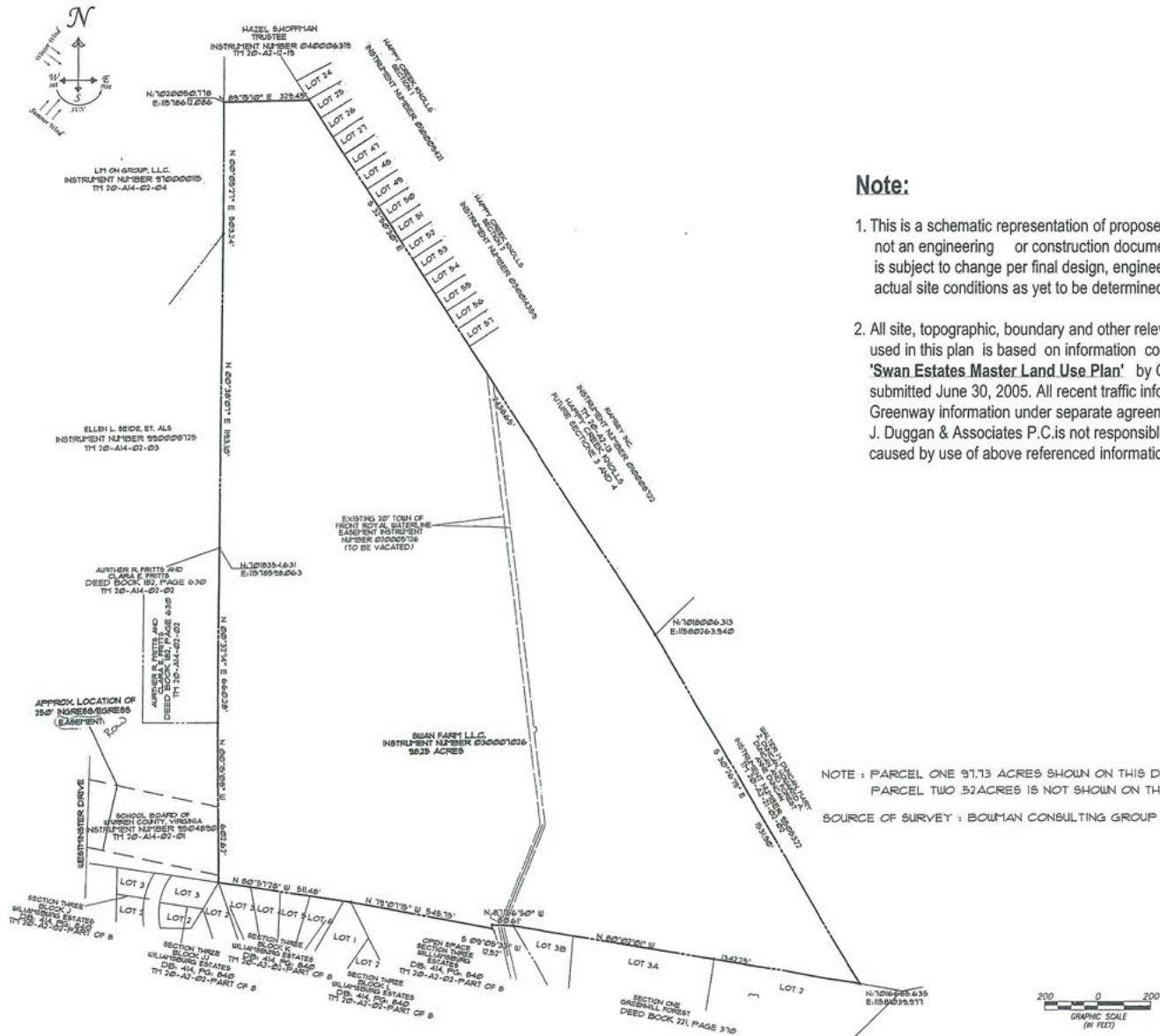
Colliers International
7900 Tysons One Pl | Suite 260
McLean, VA 22102
P: +1 703 394 4800

This document has been prepared by Colliers International for advertising and general information only. Colliers International makes no guarantees, representations or warranties of any kind, expressed or implied, regarding the information including, but not limited to, warranties of content, accuracy and reliability. Any interested party should undertake their own inquiries as to the accuracy of the information. Colliers International excludes unequivocally all inferred or implied terms, conditions and warranties arising out of this document and excludes all liability for loss and damages arising there from. This publication is the copyrighted property of Colliers International and/or its licensor(s). ©2017. All rights reserved.

Residential Land Available

FOR SALE | 238 SWAN RD, FRONT ROYAL | VA

SITE PLAN



Contact us:

Benjamin Luke
Assistant Vice President
+1 703 394 4810
ben.luke@colliers.com

John Lesinski
Executive Vice President
+1 703 394 4846
john.lesinski@colliers.com

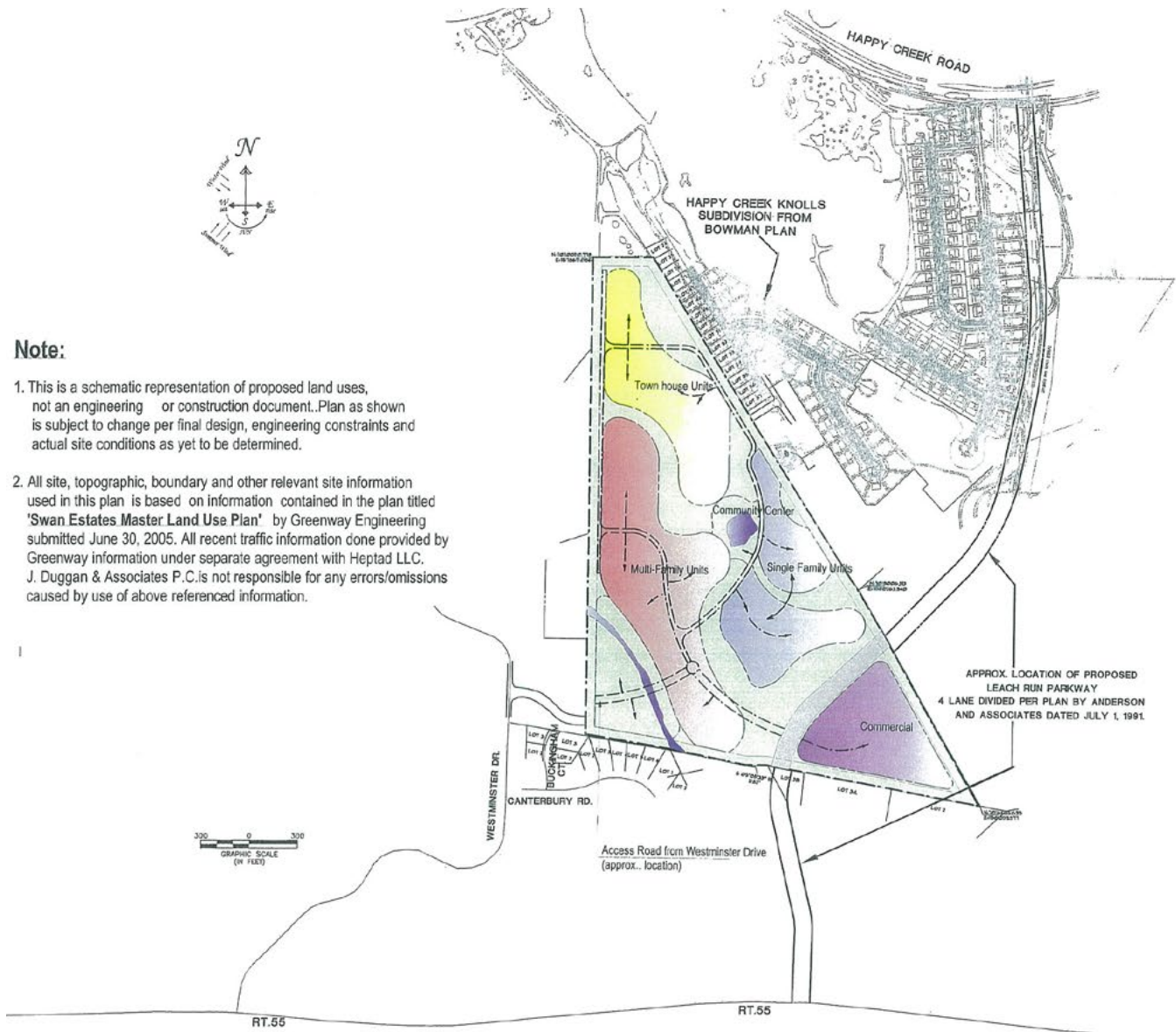
Residential Land Available

FOR SALE | 238 SWAN RD, FRONT ROYAL | VA

SITE PLAN

Note:

1. This is a schematic representation of proposed land uses, not an engineering or construction document. Plan as shown is subject to change per final design, engineering constraints and actual site conditions as yet to be determined.
2. All site, topographic, boundary and other relevant site information used in this plan is based on information contained in the plan titled 'Swan Estates Master Land Use Plan' by Greenway Engineering submitted June 30, 2005. All recent traffic information done provided by Greenway information under separate agreement with Heptad LLC. J. Duggan & Associates P.C. is not responsible for any errors/omissions caused by use of above referenced information.



Contact us:

Benjamin Luke

Assistant Vice President
+1 703 394 4810
ben.luke@colliers.co

John Lesinski

Executive Vice President
+1 703 394 4846
john.lesinski@colli

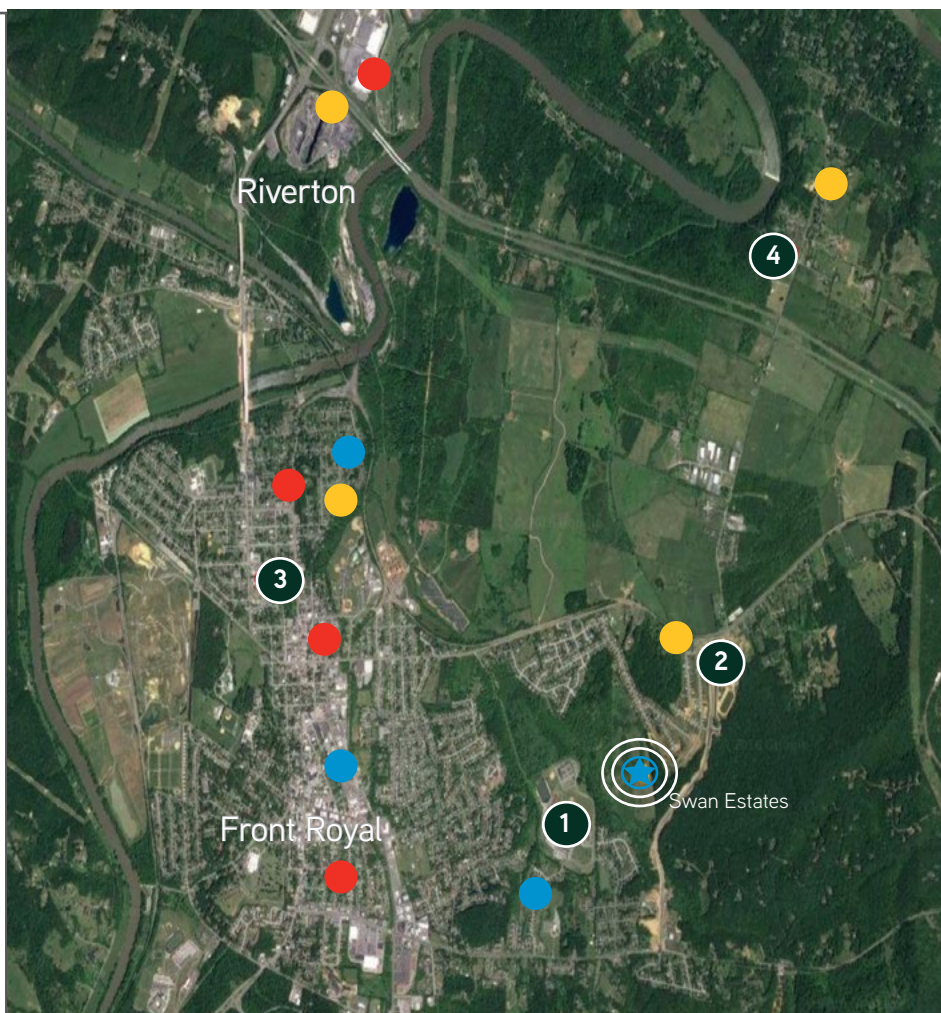
LOCAL AMENITIES

- 1 Warren County High School
- 2 Warren County Middle School
- 3 Warren Memorial Hospital
- 4 Christendom College

Area Restaurants

Hotels

Shopping



Contact us:

Benjamin Luke

Assistant Vice President
+1 703 394 4810
ben.luke@colliers.com

John Lesinski

Executive Vice President
+1 703 394 4846
john.lesinski@colliers.com

colliers.com/washingtondc

This document has been prepared by Colliers International for advertising and general information only. Colliers International makes no guarantees, representations or warranties of any kind, expressed or implied, regarding the information including, but not limited to, warranties of content, accuracy and reliability. Any interested party should undertake their own inquiries as to the accuracy of the information. Colliers International excludes unequivocally all inferred or implied terms, conditions and warranties arising out of this document and excludes all liability for loss and damages arising there from. This publication is the copyrighted property of Colliers International and/or its licensor(s). ©2017. All rights reserved.



Accelerating success.