



# Office/Retail Space with Visibility on Manchester Road

**FOR LEASE** | 16111 Manchester Road, Ellisville | Missouri

- › 2,720 SF first floor space, divisible to  $\pm 1,300$  SF
- › Building signage available
- › Excellent visibility on Manchester Road with  $\pm 43,000$  VPD
- › Prominent location with easy access near the Clarkson/Manchester intersection
- › Ample parking with 15 spaces

Lease Rate:

**\$13.00**  
PSF NNN

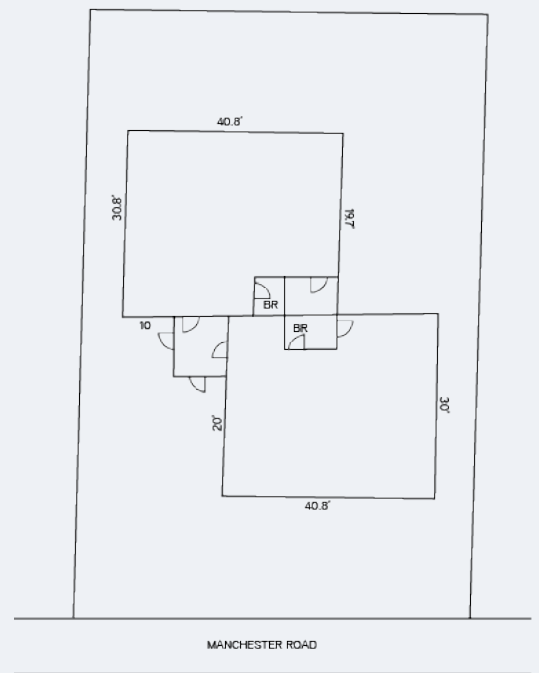
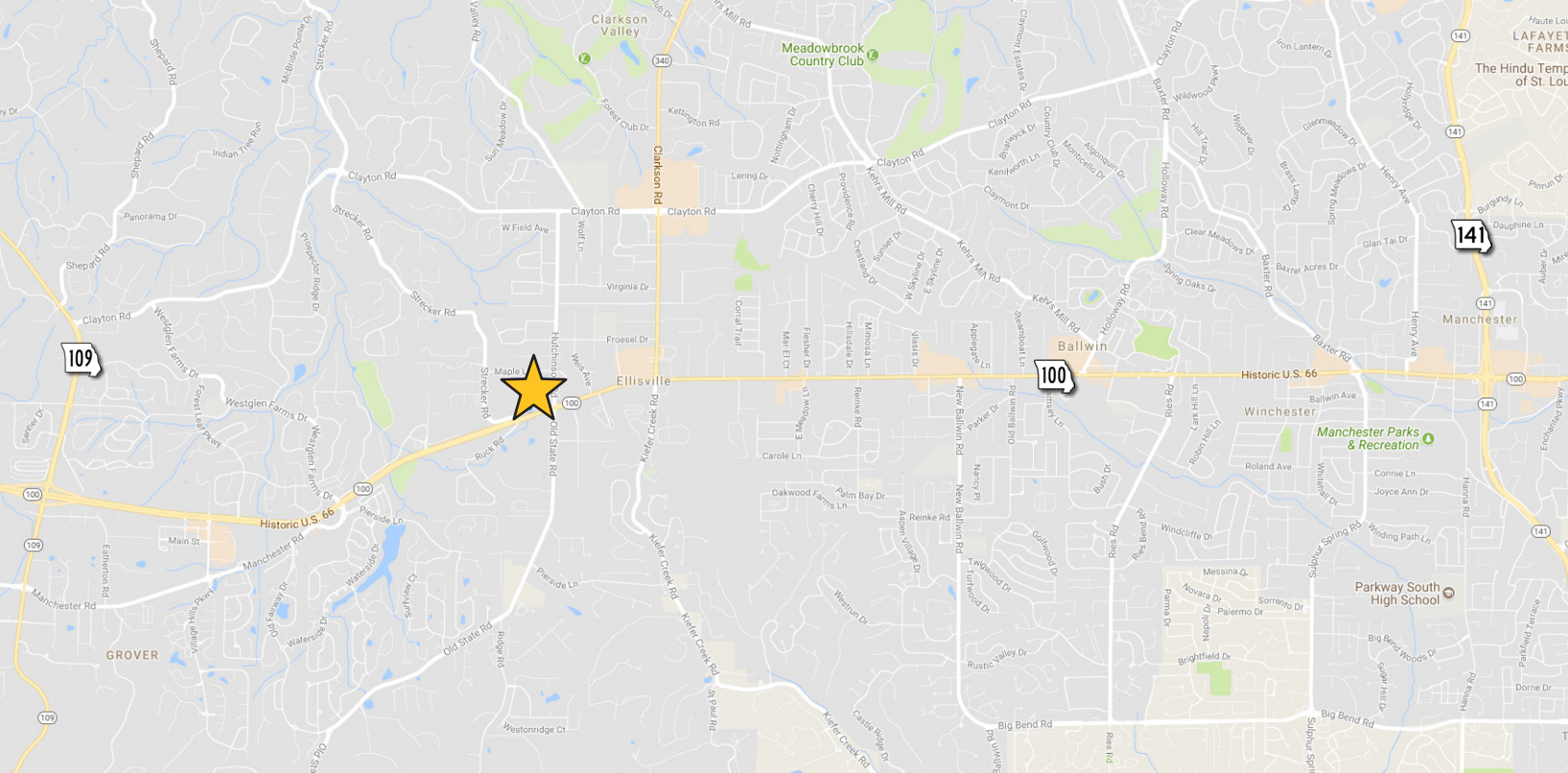
**Rebekah Bahn Kingston, Esq., CCIM**

Senior Vice President  
+1 314 584 6203  
rebekah.bahn@colliers.com

**Mike Budenholzer**

Assistant Vice President  
+1 314 584 6235  
mike.budenholzer@colliers.com





## FOR LEASE | 16111 Manchester Road, Ellisville | Missouri

Contact us:

**Rebekah Bahn Kingston, Esq., CCIM**  
Senior Vice President  
+1 314 584 6203  
rebekah.bahn@colliers.com

**Mike Budenholzer**  
Assistant Vice President  
+1 314 584 6235  
mike.budenholzer@colliers.com



Accelerating success.

©2018 Colliers International. Information herein has been obtained from sources deemed reliable, however its accuracy cannot be guaranteed. The user is required to conduct their own due diligence and verification.