

HIGH IMAGE, CORPORATE
MEDICAL OFFICE BUILDING FOR LEASE
HARBOR MEDICAL CENTER

2720 N. HARBOR BLVD. • FULLERTON, CA 92835

MAJOR BUILDING RENOVATIONS COMPLETED

PROMINENT BUILDING TOP SIGNAGE AVAILABLE!!



For More Information, Please Contact:

JOHN S. WADSWORTH
Senior Vice President | Irvine
Healthcare Properties
1 949 724 5528
john.wadsworth@colliers.com

AARON PHILLIPS
Associate Vice President | Irvine
Healthcare Services
1 949 724 5562
aaron.phillips@colliers.com



3 Park Plaza, Suite 1200, Irvine, CA 92614
1 949 474 0707 www.colliers.com

Colliers International makes no guarantees, representations or warranties of any kind, expressed or implied, regarding the information including, but not limited to, warranties of content, accuracy and reliability. This publication is the copyrighted property of Colliers International and /or its licensor(s). 2017. All rights reserved.

> HARBOR MEDICAL CENTER

2720 Harbor Blvd. | Fullerton



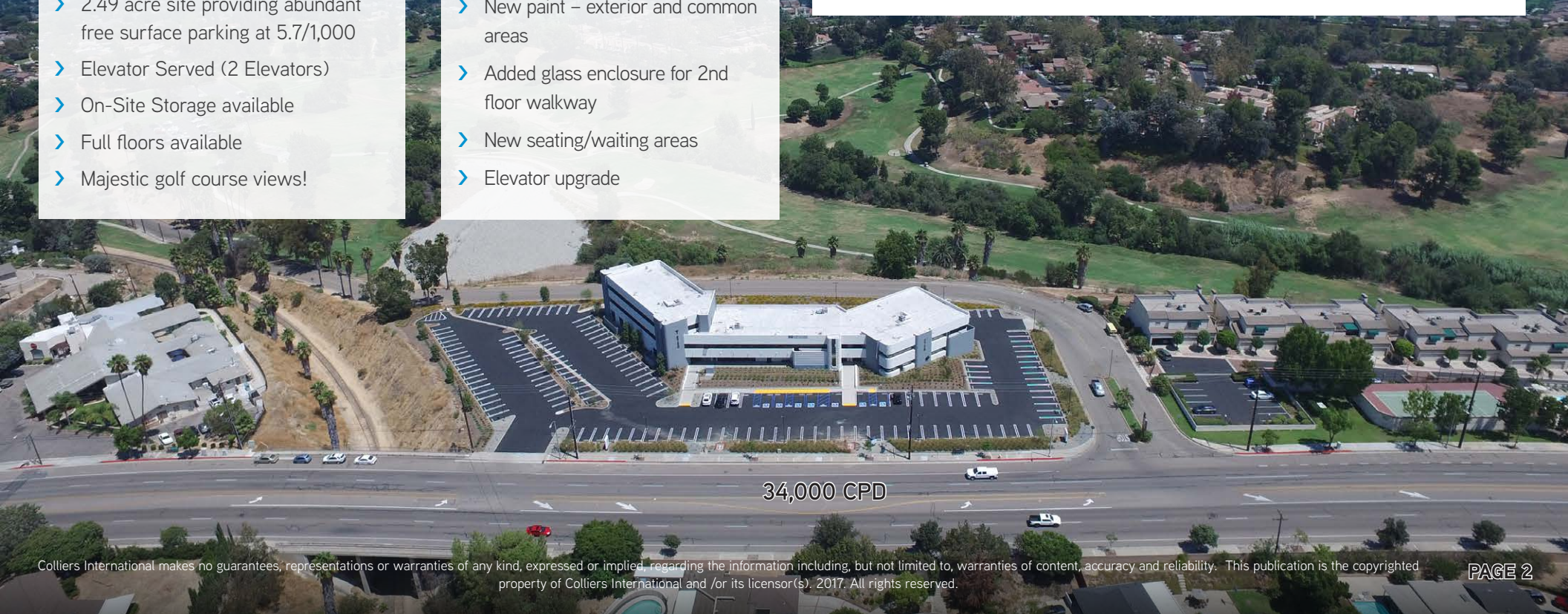
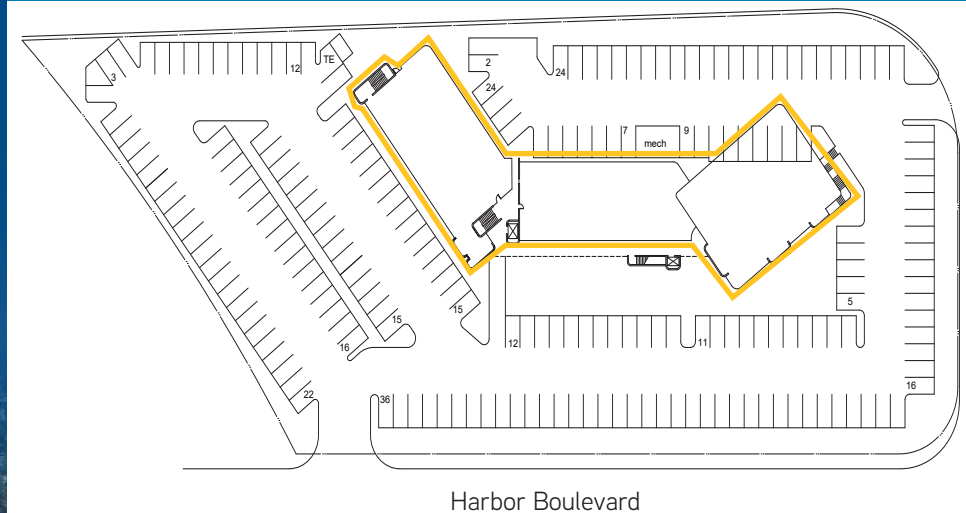
> BUILDING HIGHLIGHTS

- > 35,660 SF; 3-story corporate medical office building
- > Prominent building top and monument signage available
- > 34,000 cars per day @ HMC & Harbor Blvd.
- > Prime location along North Harbor Blvd.; a major North/South arterial in North Orange County
- > Situated ½ mile from St. Jude Medical Center
- > 2.49 acre site providing abundant free surface parking at 5.7/1,000
- > Elevator Served (2 Elevators)
- > On-Site Storage available
- > Full floors available
- > Majestic golf course views!

> PROJECT RENOVATIONS

- > Major Renovations Completed
- > New exterior building skin
- > Common area refurbishment including lighting and walkways
- > Complete landscape renovation
- > Parking lot renovated for ease of accessibility, ADA upgrades, new lighting, and slurry
- > New, high-end entrances
- > New signage program approved
- > New paint – exterior and common areas
- > Added glass enclosure for 2nd floor walkway
- > New seating/waiting areas
- > Elevator upgrade

> SITE PLAN



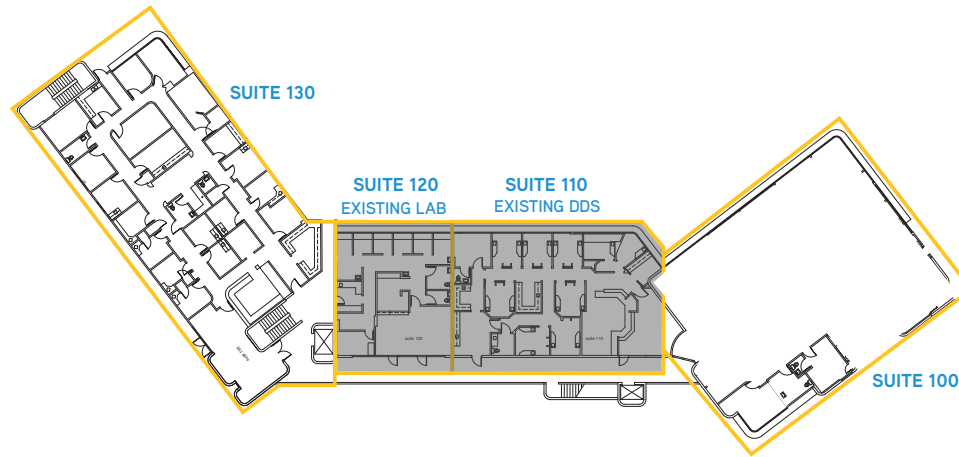
34,000 CPD

> HARBOR MEDICAL CENTER

2720 Harbor Blvd. | Fullerton



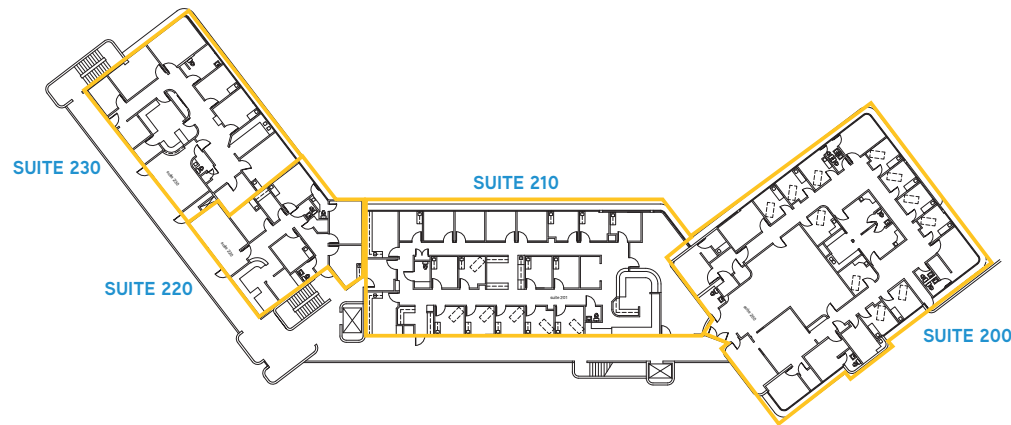
FIRST FLOOR



AVAILABLE SPACE

Suite #	Size	Availability
100	5,755 SF	Vacant
130	5,641 SF	Vacant

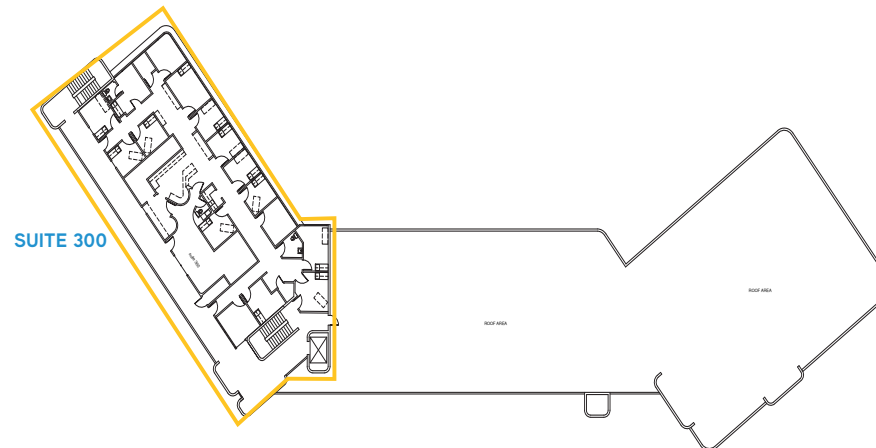
SECOND FLOOR



AVAILABLE SPACE

Suite #	Size	Availability
200	5,727 SF	Vacant
210	4,814 SF	Vacant
220	1,795 SF	Vacant
230	2,656 SF	Vacant
Entire Floor	14,992 SF	

THIRD FLOOR

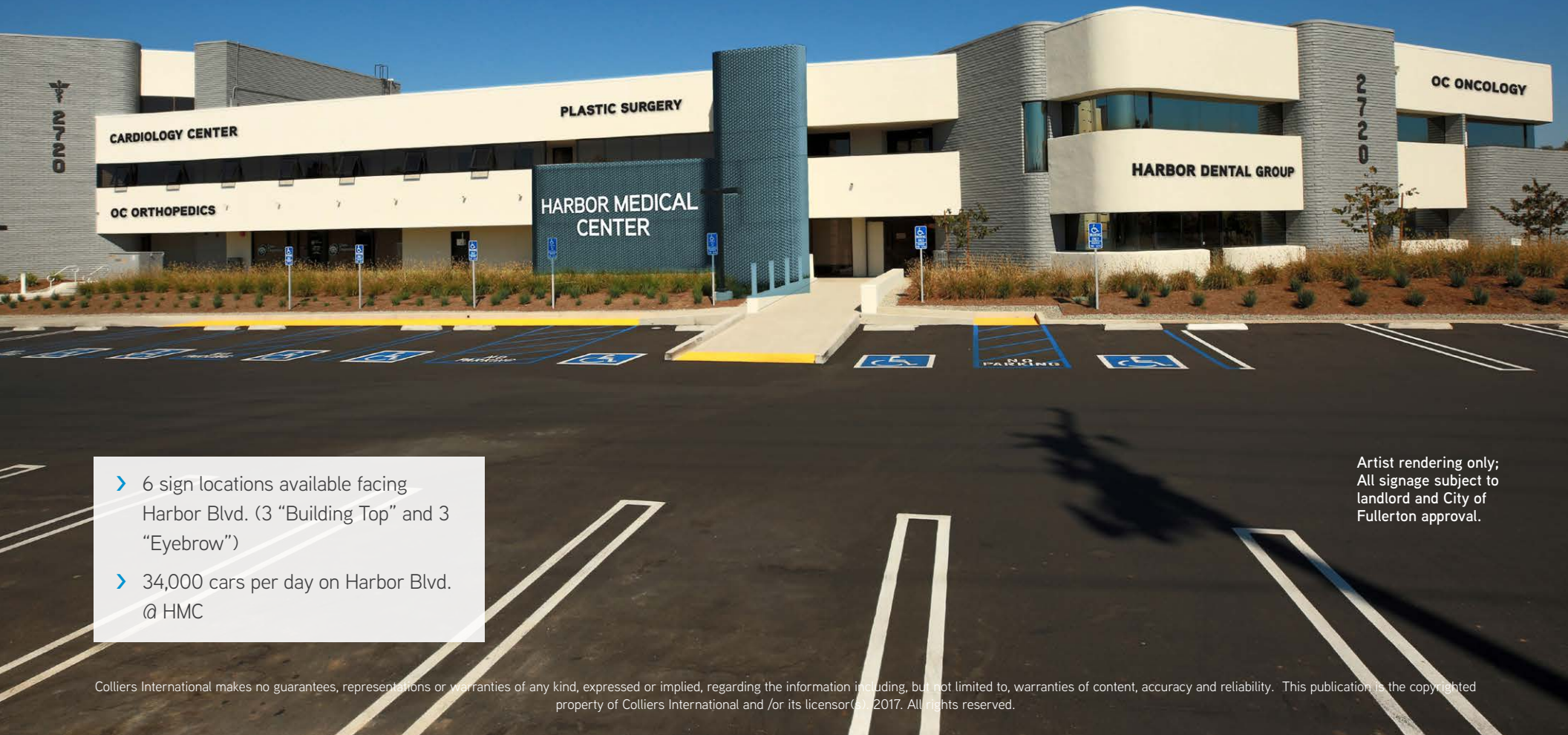


AVAILABLE SPACE

Suite #	Size	Availability
300	4,464 SF	Vacant



PROMINENT BUILDING SIGNAGE AVAILABLE!!



- > 6 sign locations available facing Harbor Blvd. (3 “Building Top” and 3 “Eyebrow”)
- > 34,000 cars per day on Harbor Blvd. @ HMC

Artist rendering only;
All signage subject to
landlord and City of
Fullerton approval.



For More Information, Please Contact:

JOHN S. WADSWORTH
Senior Vice President | Irvine
Healthcare Properties
1 949 724 5528
john.wadsworth@colliers.com

AARON PHILLIPS
Associate Vice President | Irvine
Healthcare Services
1 949 724 5562
aaron.phillips@colliers.com



3 Park Plaza, Suite 1200, Irvine, CA 92614
1 949 474 0707 www.colliers.com

Colliers International makes no guarantees, representations or warranties of any kind, expressed or implied, regarding the information including, but not limited to, warranties of content, accuracy and reliability. This publication is the copyrighted property of Colliers International and /or its licensor(s). 2017. All rights reserved.