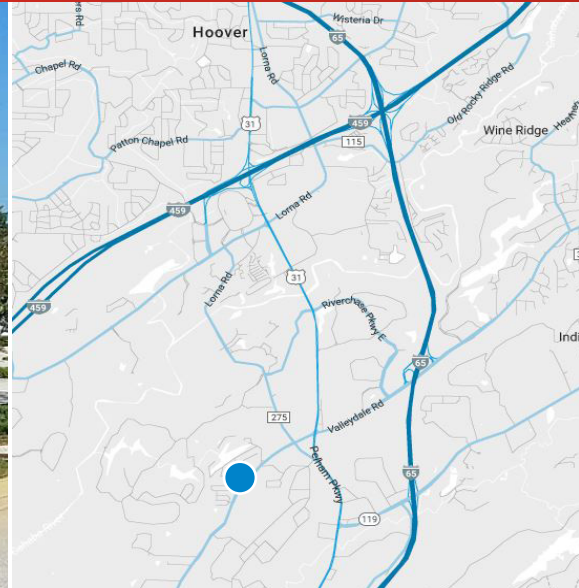


FOR SALE > OFFICE BUILDING

105 Hayesbury Drive

105 HAYESBURY DRIVE, PELHAM, ALABAMA 35124



Location

105 Hayesbury Drive is located just off Highway 261/Valleydale Road near Riverchase. This Class B office building is within minutes to Interstate 65 and Interstate 459. Convenient to the numerous restaurants and retail centers in Pelham and Riverchase.

Property Overview

- > Total Building SF: \pm 3,800 SF
- > Two-story brick building
- > Built in 2008
- > Site: \pm 1/3 acre corner location
- > Parking 5.5/1,000 SF

Building Amenities

- > Controlled access security system with exterior cameras
- > Elevator
- > Secure server room with separate air conditioning
- > Ample CAT 6 network cabling throughout
- > One kitchen and two restrooms on 1st floor
- > Two kitchenettes and two restrooms on 2nd floor

Price: \$685,000.00

Contact Us

JAMIE JUSTICE, CCIM
+1 205 949 5987
BIRMINGHAM, AL
jamie.justice@colliers.com

ANITA TURNER
+1 205 949 2690
BIRMINGHAM, AL
anita.turner@colliers.com

COLLIERS INTERNATIONAL
880 Montclair Road, Suite 250
Birmingham, Alabama 35213
www.colliers.com

FOR SALE > OFFICE BUILDING

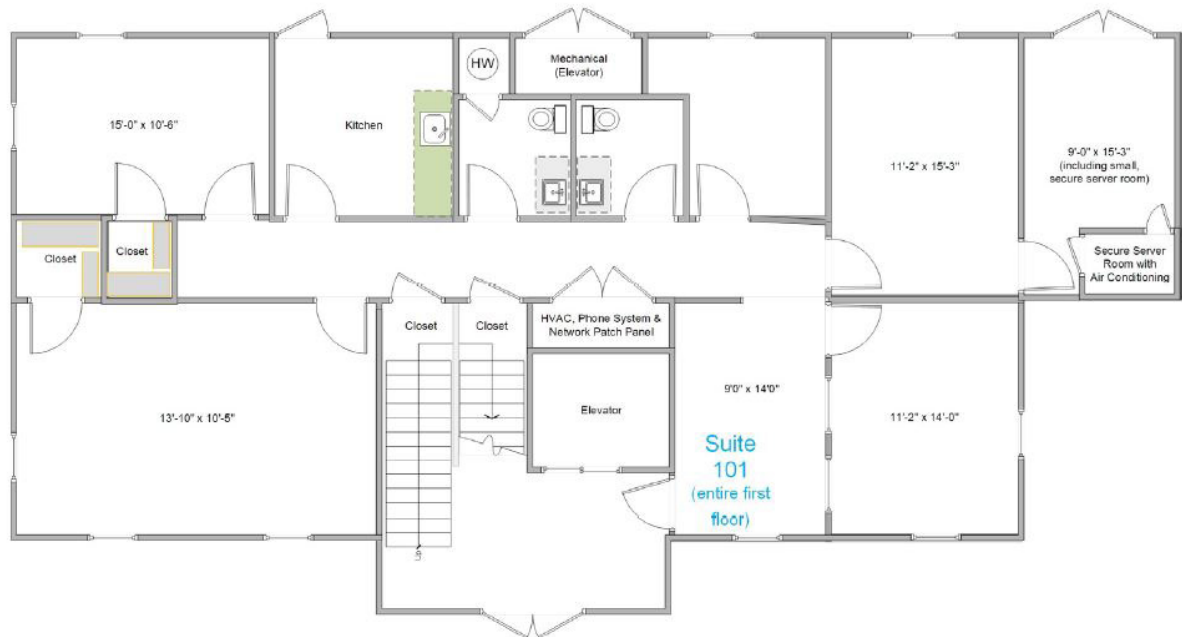
105 Hayesbury Drive

105 HAYESBURY DRIVE, PELHAM, ALABAMA 35124

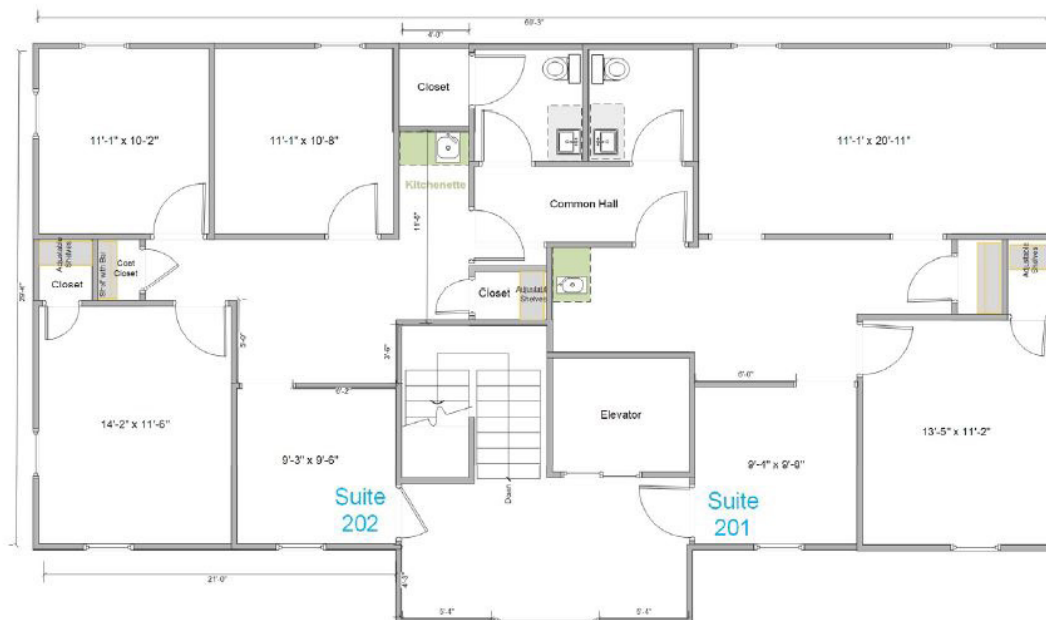


Floor Plans

1st Floor



2nd Floor



JAMIE JUSTICE, CCIM
+1 205 949 5987
BIRMINGHAM, AL
jamie.justice@colliers.com

ANITA TURNER
+1 205 949 2690
BIRMINGHAM, AL
anita.turner@colliers.com

COLLIERS INTERNATIONAL
880 Montclair Road, Suite 250
Birmingham, Alabama 35213
www.colliers.com