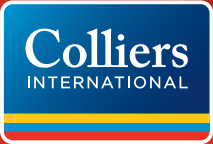


FOR SALE > UNIQUE MIX OF PROPERTY TYPES

11923 NE Halsey Street, Portland, OR

Retail, Office, Residential, Storage



FOR SALE > UNIQUE MIX OF PROPERTY TYPES

11923 NE Halsey Street, Portland, OR

Retail, Office, Residential, Storage



Strong Demographics			
	1 Mile	3 Miles	5 Miles
Population (2017)	19,820	163,514	390,043
Population (5 Yr Forecast)	21,046	173,379	413,652
Median HH Income	\$54,097	\$50,207	\$56,282
Households	7,544	61,860	151,236
Median Home Value	\$248,975	\$252,890	\$281,719



Property Highlights

- > Unique make-up of retail, office, residential, and storage
- > Excellent visibility to NE Halsey Street
- > Off-Street Parking
- > 12,192 SF of buildings
- > Zoned CN2 Neighborhood Commercial

\$2,300,000

PROPERTY DETAILS	
Lot Size	17,806 SF
1st Floor 2-3 Retail Space Total Size	7,200 SF
2nd Floor - 2 Offices Approx.	2,000 SF
2 Apartments Approx.	1,600 SF
Shop Space	1,392 SF
Total SF Approx.	12,192 SF

This document has been prepared by Colliers International for advertising and general information only. Colliers International makes no guarantees, representations or warranties of any kind, expressed or implied, regarding the information including, but not limited to, warranties of content, accuracy and reliability. Any interested party should undertake their own inquiries as to the accuracy of the information. Colliers International excludes unequivocally all inferred or implied terms, conditions and warranties arising out of this document and excludes all liability for loss and damages arising there from. This publication is the copyrighted property of Colliers International and/or its licensor(s). ©2017. All rights reserved.



SCOTT MACLEAN  
Senior Vice President  
503 542 5891  
scott.maclean@colliers.com

COLLIERS INTERNATIONAL  
851 SW Sixth Avenue, Suite 1200  
Portland, OR 97204  
www.colliers.com



FOR SALE > UNIQUE MIX OF PROPERTY TYPES

11923 NE Halsey Street, Portland, OR

Retail, Office, Residential, Storage



Zoning - CN2 - Neighborhood Commercial 2

- Good Visibility
- Diversified commercial property
- Located in an area of improving value



**73** Walk Score

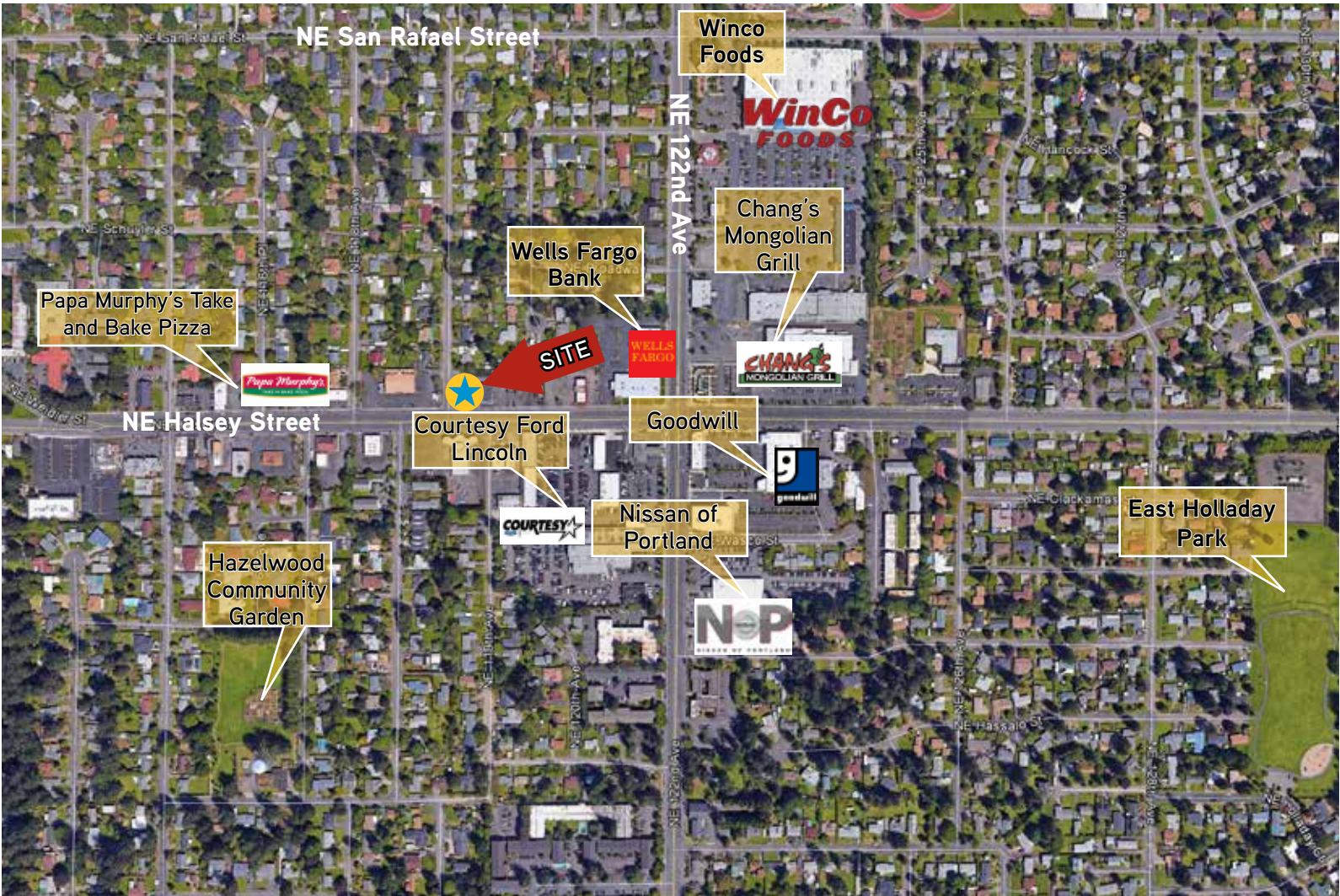
Traffic Counts				
Collection Street	Cross Street	Traffic	Year	Distance
NE Halsey	NE 122nd Avenue	30,969	2015	0.12 mi
NE 122nd	NE Broadway St	30,218	2015	0.15 mi
NE 114th Ave	NE Halsey St	1,811	2015	0.21 mi

SCOTT MACLEAN  
Senior Vice President  
503 542 5891  
scott.maclean@colliers.com

FOR SALE > UNIQUE MIX OF PROPERTY TYPES

EXCELLENT FREEWAY ACCESS TO I-84 AND I-205 FREEWAYS

LOCATED IN THE UP AND COMING PARKROSE HEIGHTS NEIGHBORHOOD



The property consists of a unique make-up of retail, office, residential, and storage. The property offers excellent visibility to NE Halsey Street, and has some off-street parking. This property is in good condition with some recent improvements.



COLLIERS INTERNATIONAL  
851 SW Sixth Avenue, Suite 1200  
Portland, OR 97204  
www.colliers.com

