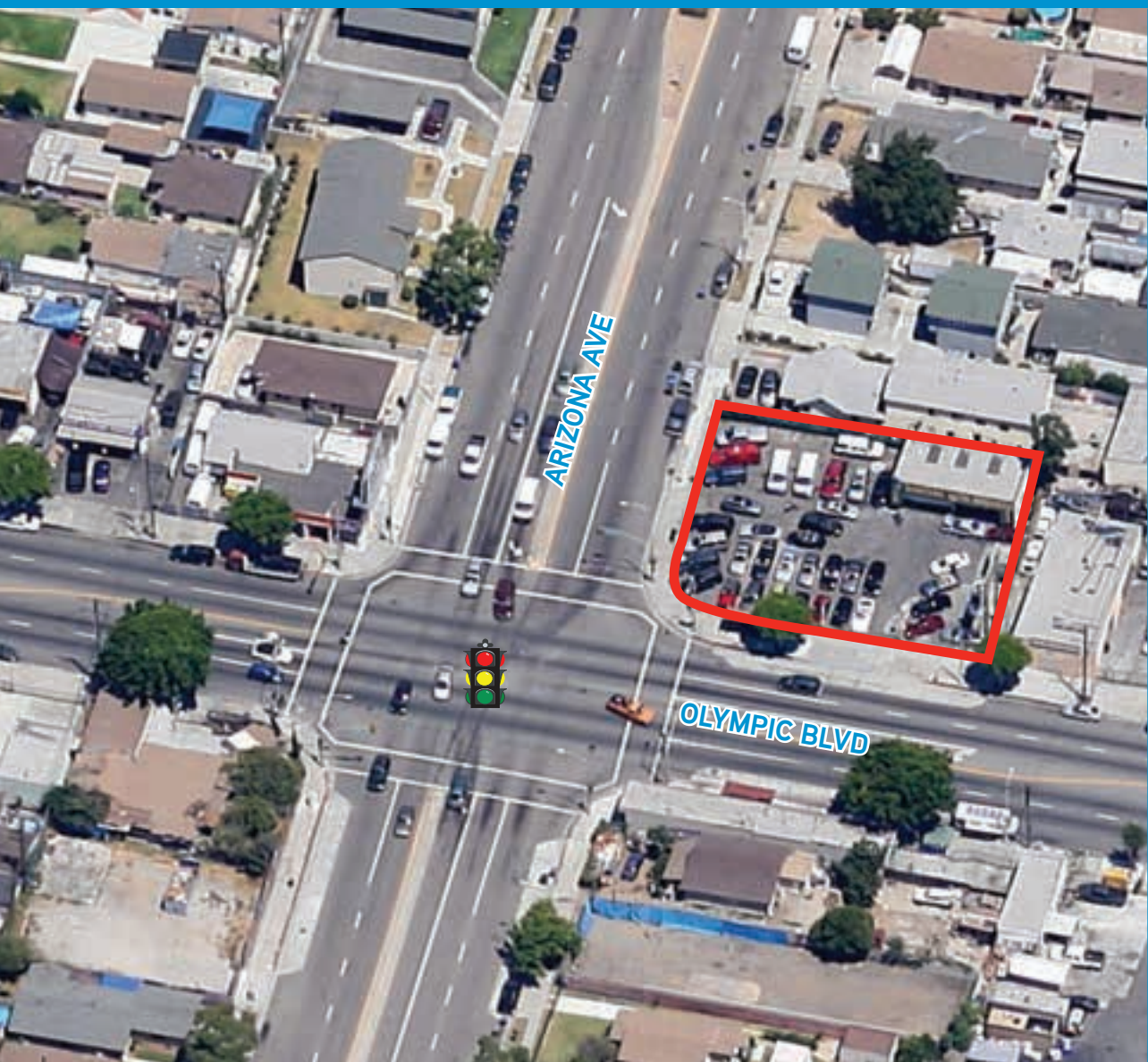


SIGNALIZED CORNER FOR SALE

4701 E OLYMPIC BLVD (NEC ARIZONA AVE) | LOS ANGELES, CA 90022



RETAIL FORESIGHT



PRICING SUMMARY

- > ±10,327 Sq. Ft. of Land
- > Zoning: LAM1

LOCATION HIGHLIGHTS

- > Prime corner location at a signalized intersection
- > Strong population density with over 45,000 residents within 1 mile, and 97% Hispanic
- > Located on Olympic Blvd, a major east/west thoroughfare with significant traffic counts exceeding 30,000 cars per day
- > 1/3 of a mile from both the 710 and 5 Freeways
- > Over 115' of frontage along Olympic Blvd

2015 DEMOGRAPHICS	1 Mile	3 Mile	5 Mile
Population:	45,289	282,571	817,883
Households:	10,885	72,531	218,217
Hispanic Population:	97.6%	91.7%	80.9%
Avg. Household Income:	\$45,903	\$51,123	\$52,832

Source: Claritas

TRAFFIC COUNTS

Olympic Blvd:	30,300 CPD	
Arizona Ave:	6,800 CPD	(Source Costar)

FOR FURTHER INFORMATION PLEASE CALL: +1 323 609 3171

JAMES RODRIGUEZ | SR. VICE PRESIDENT | LIC. NO. 01164377 | james.rodriguez@colliers.com
MICHAEL BOHORQUEZ | SR. ASSOCIATE | LIC. NO. 01870842 | michael.bohorquez@colliers.com

COLLIERS INTERNATIONAL | DOWNTOWN LA
865 S. Figueroa St., Suite 3500 | Los Angeles, CA 90017
www.Retail-Foresight.com

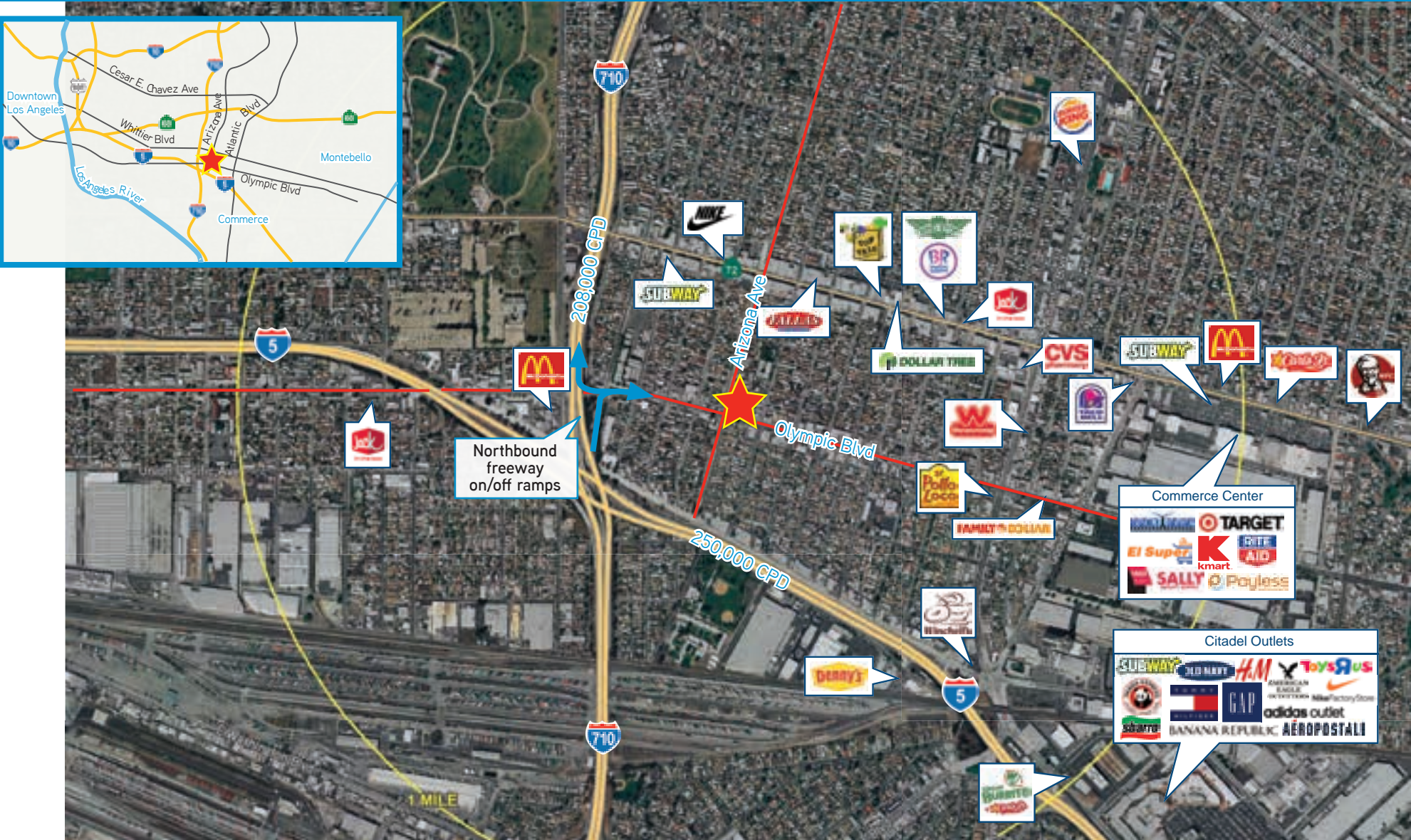
Colliers International makes no guarantees, representations or warranties of any kind, expressed or implied, regarding the information including, but not limited to, warranties of content, accuracy and reliability. This publication is the copyrighted property of Colliers International and /or its licensor(s). 2016. All rights reserved.

SIGNALIZED CORNER FOR SALE

4701 E OLYMPIC BLVD (NEC ARIZONA AVE) | LOS ANGELES, CA 90022



RETAIL FORESIGHT



FOR FURTHER INFORMATION PLEASE CALL: +1 323 609 3171

JAMES RODRIGUEZ | SR. VICE PRESIDENT | LIC. NO. 01164377 | james.rodriguez@colliers.com
MICHAEL BOHORQUEZ | SR. ASSOCIATE | LIC. NO. 01870842 | michael.bohorquez@colliers.com

COLLIERS INTERNATIONAL | DOWNTOWN LA
865 S. Figueroa St., Suite 3500 | Los Angeles, CA 90017
www.Retail-Foresight.com