

FOR LEASE THE ATRIUM PROFESSIONAL CLASS A OFFICE

5001 E. COMMERCENTER DRIVE, BAKERSFIELD, CA



DAVID A. WILLIAMS, SIOR
SENIOR VICE PRESIDENT | PRINCIPAL
CENTRAL CALIFORNIA
OFFICE PROPERTIES TEAM
DIR 661 631 3816
LIC #00855489
david.a.williams@colliers.com

JASON ALEXANDER
SENIOR VICE PRESIDENT | PRINCIPAL
CENTRAL CALIFORNIA
OFFICE PROPERTIES TEAM
DIR 661 631 3818
LIC #01360995
jason.alexander@colliers.com

COLLIERS INTERNATIONAL
10000 STOCKDALE HIGHWAY, SUITE 102
BAKERSFIELD, CA 93311
DIR 661 631 3800
www.colliers.com/bakersfield



THE ATRIUM

PROFESSIONAL CLASS A OFFICE

PROPERTY INFORMATION



5001 E. COMMERCENTER DRIVE, BAKERSFIELD, CA

PROPERTY HIGHLIGHTS

- Ground floor space available 6,635 sf
- Class A office building
- Monument signage available
- Signature building
- Subterranean secured parking
- 3-Story lushly landscaped atrium
- Interior and exterior views
- Two (2) elevators
- Natural light
- Extensive interior/exterior window line
- Within walking distance to hotels and retail shops

AVAILABLE

934 to 6,635 SF (see floor plans)

*Suite 230 is a model suite that will be available for immediate occupancy by April 1, 2018

LEASE RATE

\$1.75 per square foot, Modified Gross
(Tenant pays utilities and janitorial)

TENANT IMPROVEMENT ALLOWANCE

Negotiable - Subject to terms of lease

Broker Disclosure: Pursuant to the Regulations of the State of California Real Estate Commissioner, Chapter 6, Section 2785 (18), it is disclosed to all potential Tenants and their Broker/Agents, and all other interested parties, that Robert J.Fena, is a partner and principal in Colliers International and also partner and principal in LinMar IV LLC and, as such, has an ownership interest in the subject property and will benefit directly and indirectly from the Lease or Sale of the subject property.

DAVID A. WILLIAMS, SIOR
SENIOR VICE PRESIDENT | PRINCIPAL
CENTRAL CALIFORNIA
OFFICE PROPERTIES TEAM
DIR 661 631 3816
LIC #00855489
david.a.williams@colliers.com

JASON ALEXANDER
SENIOR VICE PRESIDENT | PRINCIPAL
CENTRAL CALIFORNIA
OFFICE PROPERTIES TEAM
DIR 661 631 3818
LIC #01360995
jason.alexander@colliers.com

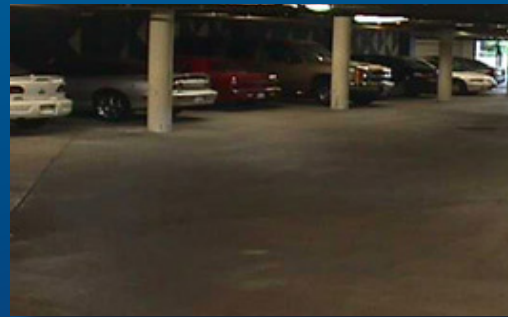
COLLIERS INTERNATIONAL
10000 STOCKDALE HIGHWAY, SUITE 102
BAKERSFIELD, CA 93311
DIR 661 631 3800
www.colliers.com/bakersfield

THE ATRIUM

PROFESSIONAL CLASS A OFFICE

PROPERTY PHOTOS

5001 E. COMMERCENTER DRIVE, BAKERSFIELD, CA



DAVID A. WILLIAMS, SIOR
SENIOR VICE PRESIDENT | PRINCIPAL
CENTRAL CALIFORNIA
OFFICE PROPERTIES TEAM
DIR 661 631 3816
LIC #00855489
david.a.williams@colliers.com

JASON ALEXANDER
SENIOR VICE PRESIDENT | PRINCIPAL
CENTRAL CALIFORNIA
OFFICE PROPERTIES TEAM
DIR 661 631 3818
LIC #01360995
jason.alexander@colliers.com

COLLIERS INTERNATIONAL
10000 STOCKDALE HIGHWAY, SUITE 102
BAKERSFIELD, CA 93311
DIR 661 631 3800
www.colliers.com/bakersfield

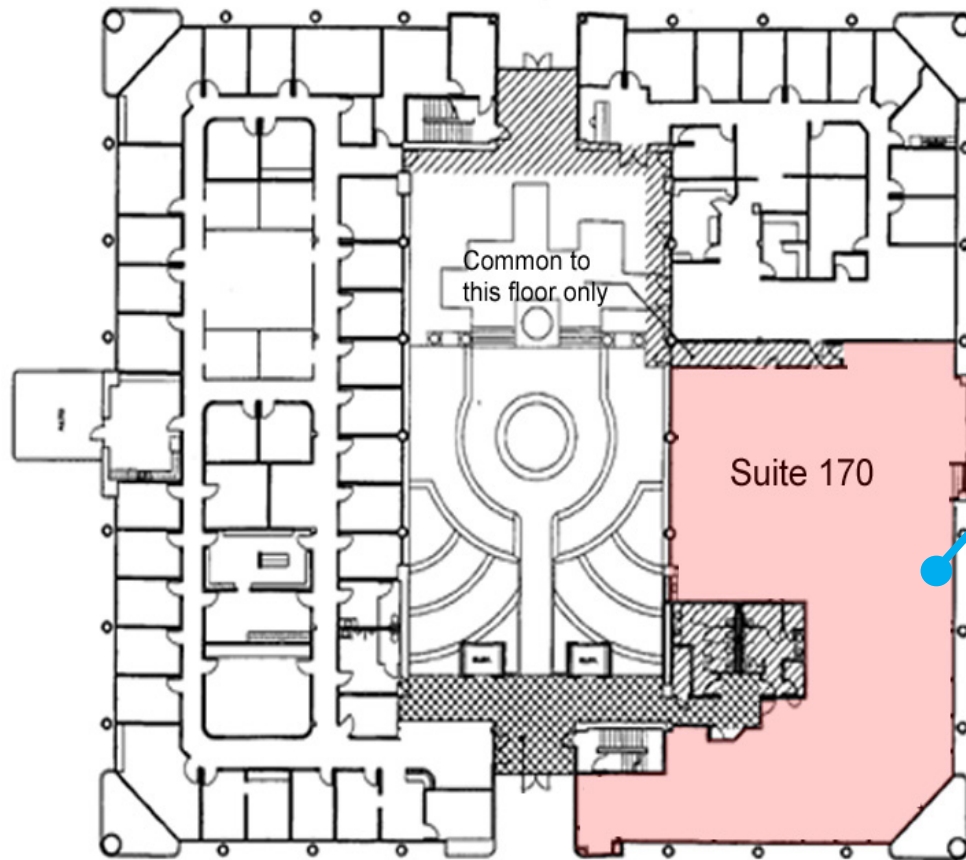


THE ATRIUM

PROFESSIONAL CLASS A OFFICE

FIRST FLOOR AVAILABLE PLANS

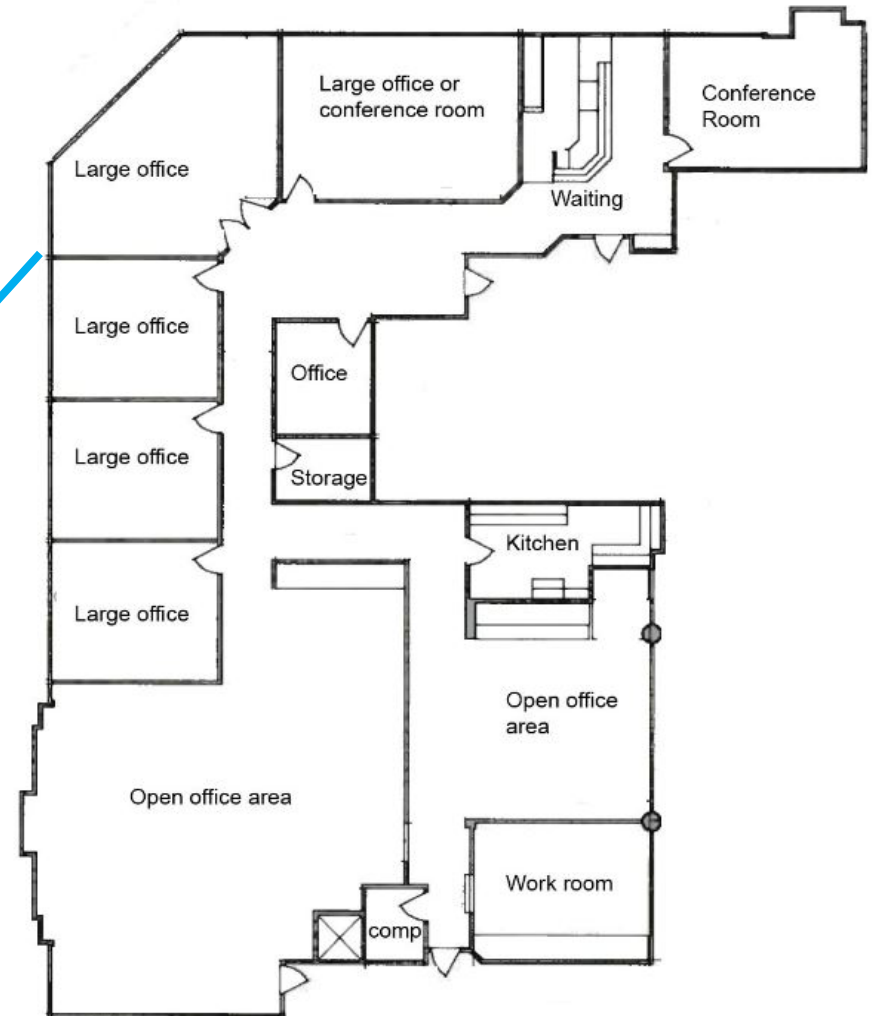
5001 E. COMMERCENTER DRIVE, BAKERSFIELD, CA



1st Floor

SUITE 170 6,635 RENTABLE SF
5,995 USABLE SF

AS-BUILT PLAN



5001 E. COMMERCENTER DRIVE, BAKERSFIELD, CA

SUITE 200 - 2,700 SF
SUITE 230 MODEL SUITE- 1,196 SF - AVAILABLE APRIL 1, 2018
SUITE 245 - 1,618 SF
SUITE 247 - 934 SF



THE ATRIUM PROFESSIONAL CLASS A OFFICE AERIAL MAP

5001 E. COMMERCENTER DRIVE, BAKERSFIELD, CA



CONTACT US:

DAVID A. WILLIAMS, SIOR
SENIOR VICE PRESIDENT | PRINCIPAL
CENTRAL CALIFORNIA
OFFICE PROPERTIES TEAM
DIR 661 631 3816
LIC# 00855489
david.a.williams@colliers.com

JASON ALEXANDER
SENIOR VICE PRESIDENT | PRINCIPAL
CENTRAL CALIFORNIA
OFFICE PROPERTIES TEAM
DIR 661 631 3818
LIC # 01360995
jason.alexander@colliers.com

COLLIERS INTERNATIONAL
10000 STOCKDALE HWY, SUITE 102
BAKERSFIELD, CA 93311
DIR 661 631 3800
www.colliers.com/bakersfield



This document has been prepared by Colliers International for advertising and general information only. Colliers International makes no guarantees, representations or warranties of any kind, expressed or implied, regarding the information including, but not limited to, warranties of content, accuracy and reliability. Any interested party should undertake their own inquiries as to the accuracy of the information. Colliers International excludes unequivocally all inferred or implied terms, conditions and warranties arising out of this document and excludes all liability for loss and damages arising there from. This publication is the copyrighted property of Colliers International and/or its licensor(s). ©2017. All rights reserved.