

# Office Space For Lease

Crown Roller Mill  
105 5th Avenue  
Minneapolis, MN 55401

NILS SNYDER CCIM, SIOR  
952 837 3020  
[nils.snyder@colliers.com](mailto:nils.snyder@colliers.com)



COLLIERS INTERNATIONAL  
900 2nd Avenue S, Suite 1575  
Minneapolis, MN 55402  
[www.colliers.com/msp](http://www.colliers.com/msp)

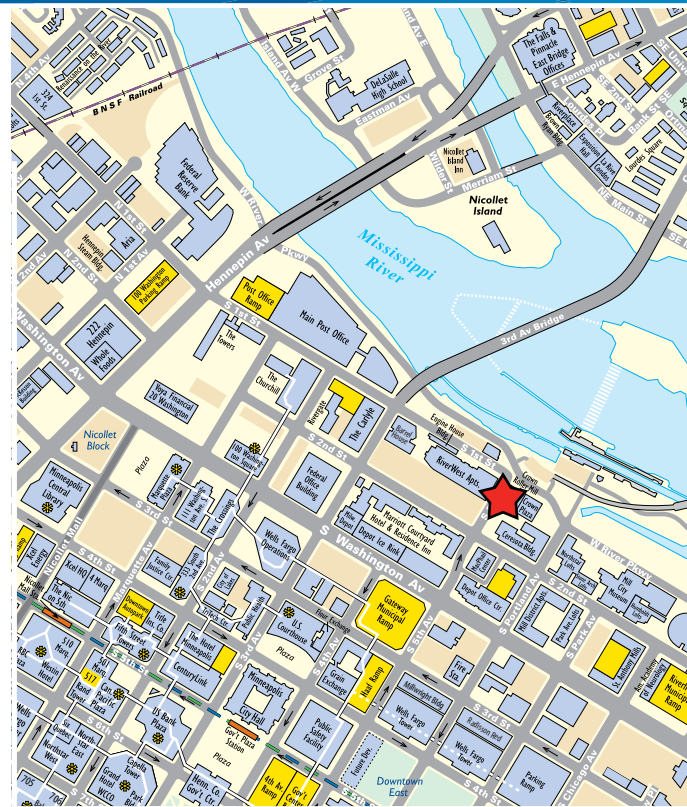
## KEY FEATURES/HIGHLIGHTS

- › Close proximity to Minneapolis CBD
- › Building conference room
- › Located in the historic Whitney Mill Corridor
- › Near parks and walking paths
- › Great views of the river
- › On-site property management
- › Easy access to I-35W and I-94

## FOR LEASE >

Address:	105 5th Avenue, Minneapolis, MN 55401
Building Size:	89,584 SF
Number of Floors:	6
Year Built:	1890
Parking	On site, underground parking ramp for tenant contract parking. Surface and metered parking are available.
Availability:	2,400 SF - divisible to 1,049 SF
Net Rental Rates:	\$14.00 - \$16.00 PSF
Est. CAM & Taxes:	\$11.76 PSF

## BUILDING PHOTOS



## CONTACT US

NILS SNYDER CCIM, SIOR  
952 837 3020  
[nils.snyder@colliers.com](mailto:nils.snyder@colliers.com)

This document/email has been prepared by Colliers International for advertising and general information only. Colliers International makes no guarantees, representations or warranties of any kind, expressed or implied, regarding the information including, but not limited to, warranties of content, accuracy and reliability. Any interested party should undertake their own inquiries as to the accuracy of the information. Colliers International excludes unequivocally all inferred or implied terms, conditions and warranties arising out of this document and excludes all liability for loss and damages arising there from. This publication is the copyrighted property of Colliers International and for its licensor(s). © 2016. All rights reserved. This communication is not intended to cause or induce breach of an existing listing agreement.



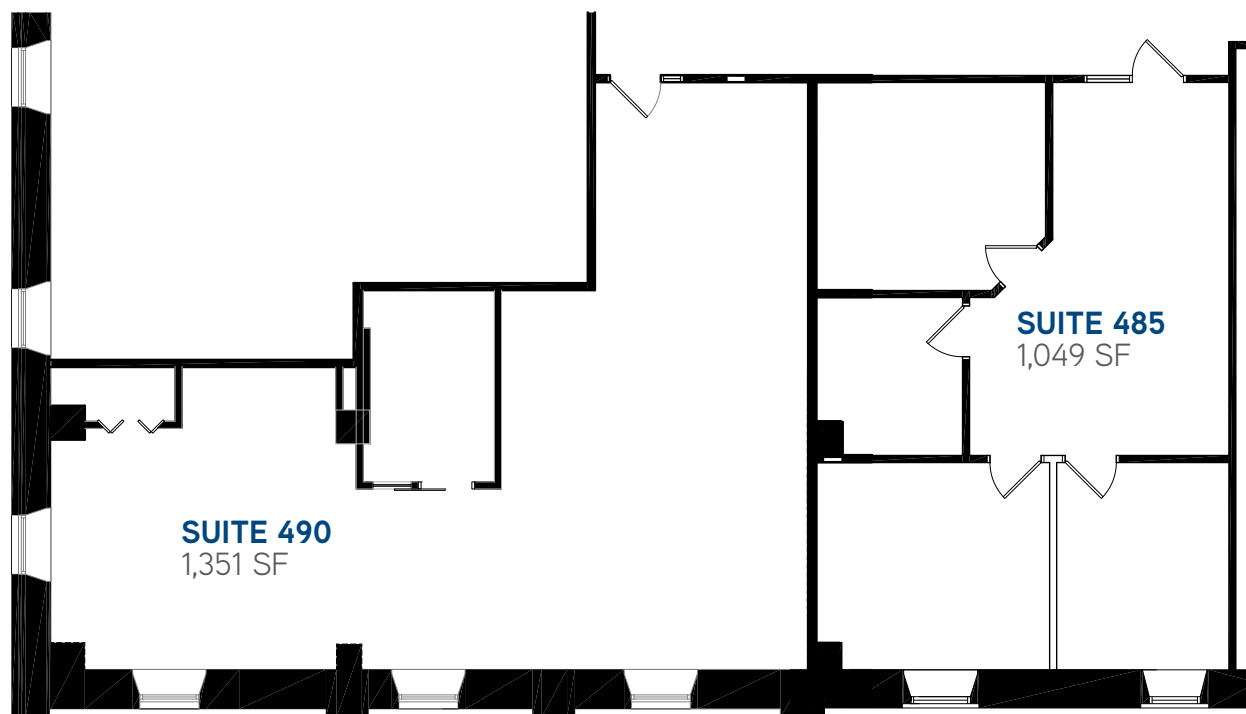
**COLLIERS INTERNATIONAL**  
900 2nd Avenue S, Suite 1575  
Minneapolis, MN 55402  
952 897 7700  
[www.colliers.com/msp](http://www.colliers.com/msp)



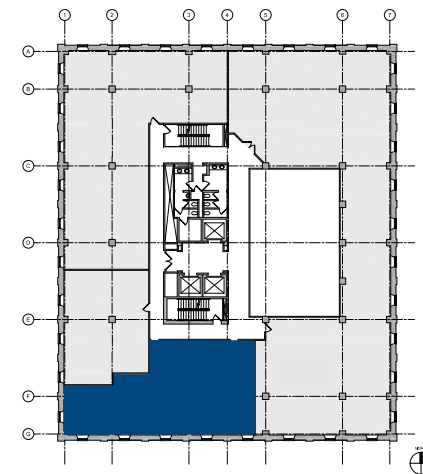
# Crown Roller Mill Minneapolis, MN



## SUITE 485-490 2,400 contiguous SF



## FOURTH FLOOR KEY



## Contact Us

NILS SNYDER CCIM, SIOR  
952 837 3020  
[nils.snyder@colliers.com](mailto:nils.snyder@colliers.com)

