

# CENTRAL AVE.

Newark, NJ

RETAIL

**NEW DEVELOPMENT**  
Corner Central Ave. & Lock St.

## GROUND FLOOR RETAIL

**Proximate to:**

NJIT, University Hospital,  
Rutgers Newark, UMDNJ, Essex Cty. Courthouses

**ESTIMATED DELIVERY 3Q 2018**

## FEATURES

- 12,645 SF – divisions considered
- 16' Ceiling height/clearance
- Retail loading area
- Street parking and 34 dedicated retail parking spaces at +/- 3/1,000 SF
- Please call for pricing



WAYNE KASBAR | SALESPERSON | WAYNE.KASBAR@COLLIERS.COM | +1 732 807 0330

SUKETU SHAH | SALESPERSON | SUKETU.SHAH@COLLIERS.COM | +1 732 807 0401

COLLIERS INTERNATIONAL NJ LLC | 10 Woodbridge Center Drive, Suite 520 | Woodbridge, NJ | colliers.com

RENDERING



**CENTRAL  
AVE.**  
Newark, NJ  
**NEW DEVELOPMENT**



	.25 Mile	.50 Mile	1 Mile	2 Miles
Population	3,557	21,890	52,278	222,054
Daytime Population	1,678	11,644	61,856	125,687
Households	1,508	4,976	19,061	77,853
Avg. Household Income	\$35,428	\$39,088	\$39,617	\$46,700

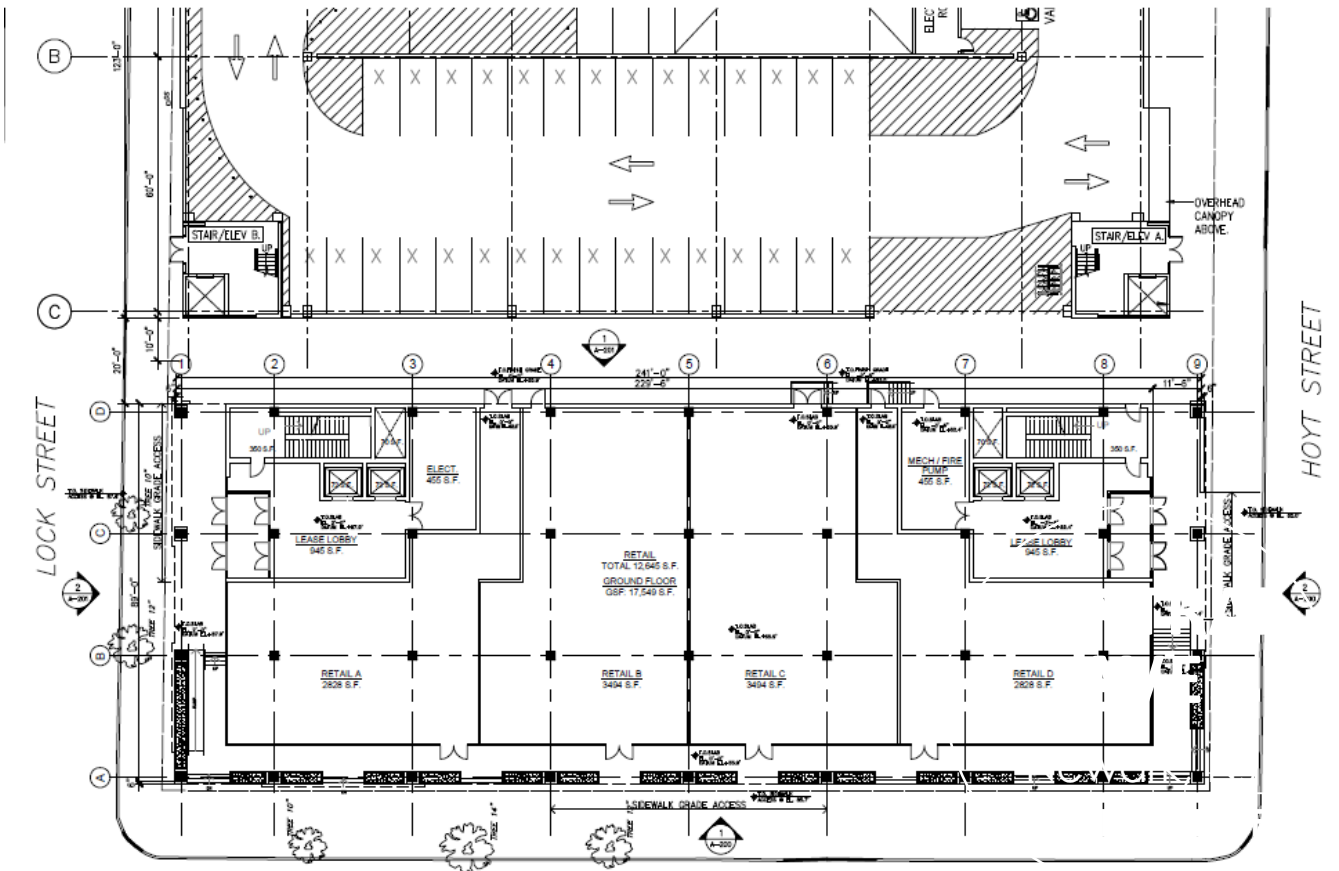
WAYNE KASBAR | SALESPERSON | WAYNE.KASBAR@COLLIERS.COM | +1 732 807 0330

SUKETU SHAH | SALESPERSON | SUKETU.SHAH@COLLIERS.COM | +1 732 807 0401

COLLIERS INTERNATIONAL NJ LLC | 10 Woodbridge Center Drive, Suite 520 | Woodbridge, NJ | colliers.com



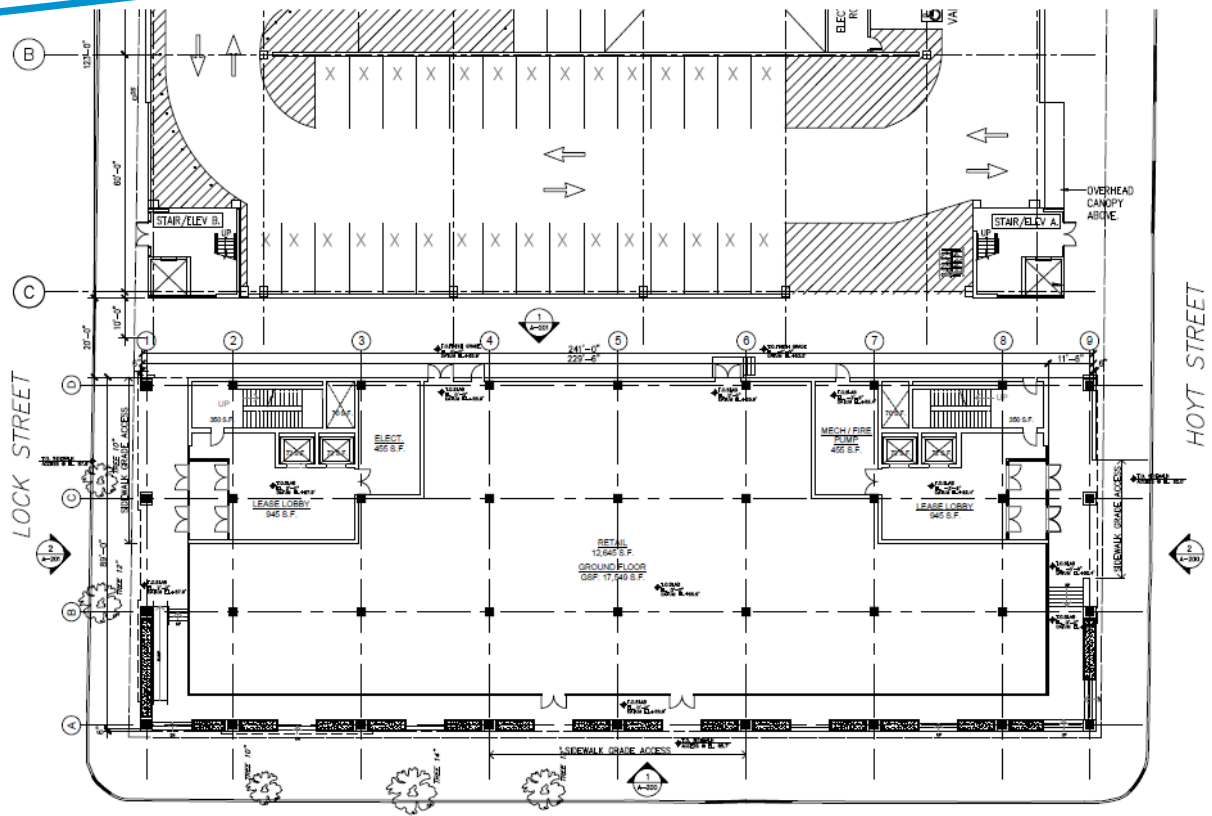
# FLOOR PLANS



**MULTI-TENANT PLAN**

CENTRAL AVENUE

**GROUND FLOOR PLAN**

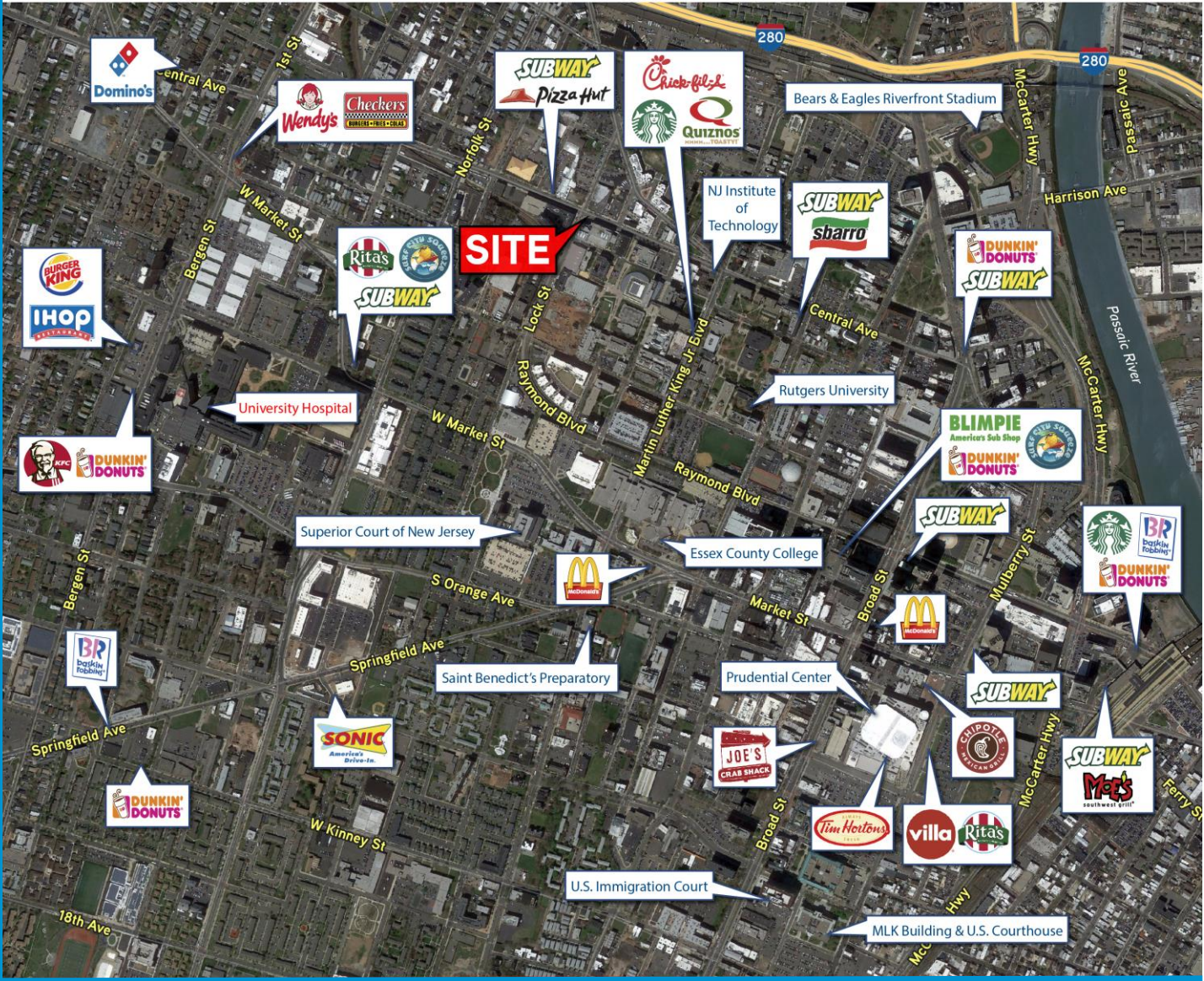


CENTRAL AVENUE

WAYNE KASBAR | SALESPERSON | [WAYNE.KASBAR@COLLIERS.COM](mailto:WAYNE.KASBAR@COLLIERS.COM) | +1 732 807 0330  
 SUKETU SHAH | SALESPERSON | [SUKETU.SHAH@COLLIERS.COM](mailto:SUKETU.SHAH@COLLIERS.COM) | +1 732 807 0401  
 COLLIERS INTERNATIONAL NJ LLC | 10 Woodbridge Center Drive, Suite 520 | Woodbridge, NJ | [colliers.com](http://colliers.com)



# Competition Map



WAYNE KASBAR | SALESPERSON | WAYNE.KASBAR@COLLIERS.COM | +1 732 807 0330  
 SUKETU SHAH | SALESPERSON | SUKETU.SHAH@COLLIERS.COM | +1 732 807 0401  
 COLLIERS INTERNATIONAL NJ LLC | 10 Woodbridge Center Drive, Suite 520 | Woodbridge, NJ | colliers.com

No representation is made as to the accuracy of the information furnished herein and same is submitted subject to errors, omissions, change of prices, rental, or other conditions, prior sale, lease, sublease, and/or withdrawal without notice. The furnishing of this information shall not be deemed a hiring. A commission in accordance with our principal's schedule of rates and conditions will be paid to the procuring Broker who executes our or our principal's brokerage agreement, subject to a fully consummated transaction upon terms and conditions acceptable to our principal.