

FOR LEASE > OFFICE

NORTHWESTERN CORPORATE CENTER

19675 W. 10 MILE ROAD | SOUTHFIELD, MICHIGAN



ENTIRE 4TH FLOOR AVAILABLE

> PROPERTY HIGHLIGHTS

- 13,536 RSF 4th Floor Space Available For Lease
- Parking: 10 Per 1,000 Ratio
- Lease Rate: \$12.95 Gross Plus Electric
- Quiet Office Setting
- Building Signage

COLLIERS INTERNATIONAL

2 Corporate Drive | Suite 300

Southfield, Michigan 48076

For More Information Call:

BRENT BESHEARS

PHONE **248 540 1000** EXT **1686**

EMAIL **brent.beshears@colliers.com**

colliers.com/detroit



NORTHWESTERN CORPORATE CENTER

SOUTHFIELD, MICHIGAN

> BUILDING SPECS

Gross Square Feet:	52,940
Acres:	2.6
Available Square Feet:	13,536
Floors:	4
Rentable Factor:	4% for Full Floors
Year Built/Renovated:	1970/1997
Parking:	10 Per 1,000
Zoning:	Office - ERO
Multi-Tenant:	Yes
Crossroads:	Ten Mile East of Evergreen Road
County:	Oakland



> HIGHLIGHTS

- 13,536 SF 4th Floor Space Available For Lease
- Parking: 10 Per 1,000 Ratio
- Quiet Office Setting
- Building Signage

> FINANCIALS

Lease Rate: \$12.95 Gross Plus Electric
TI Allowance: Negotiable

BRENT BESHEARS
PHONE 248 540 1000 EXT 1686
EMAIL brent.beshears@colliers.com



COLLIERS INTERNATIONAL
2 Corporate Dr. | Suite 300
Southfield, Michigan 48076

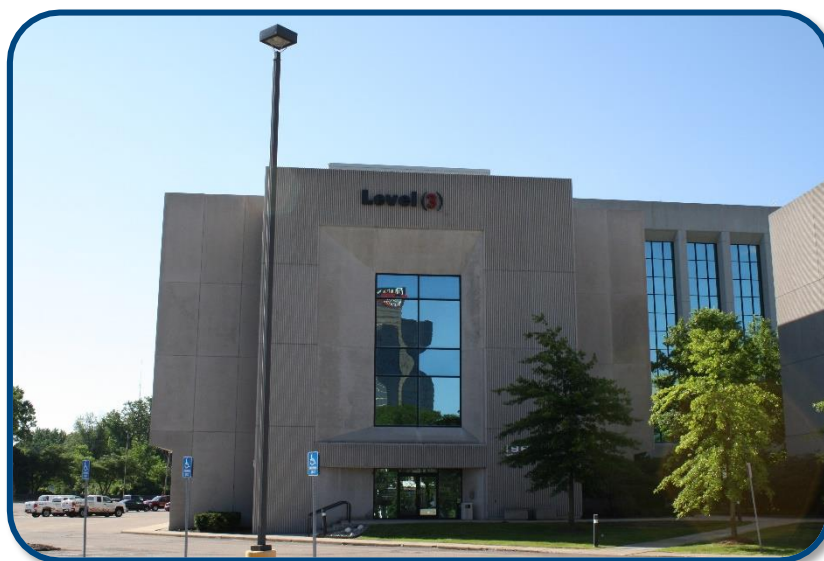
FOR LEASE > OFFICE

NORTHWESTERN CORPORATE CENTER

19675 W. 10 MILE ROAD | SOUTHFIELD, MICHIGAN



> BUILDING PHOTOS



BRENT BESHEARS

PHONE 248 540 1000 EXT 1686

EMAIL brent.beshears@colliers.com



COLLIERS INTERNATIONAL

2 Corporate Dr. | Suite 300
Southfield, Michigan 48076

FOR LEASE > OFFICE

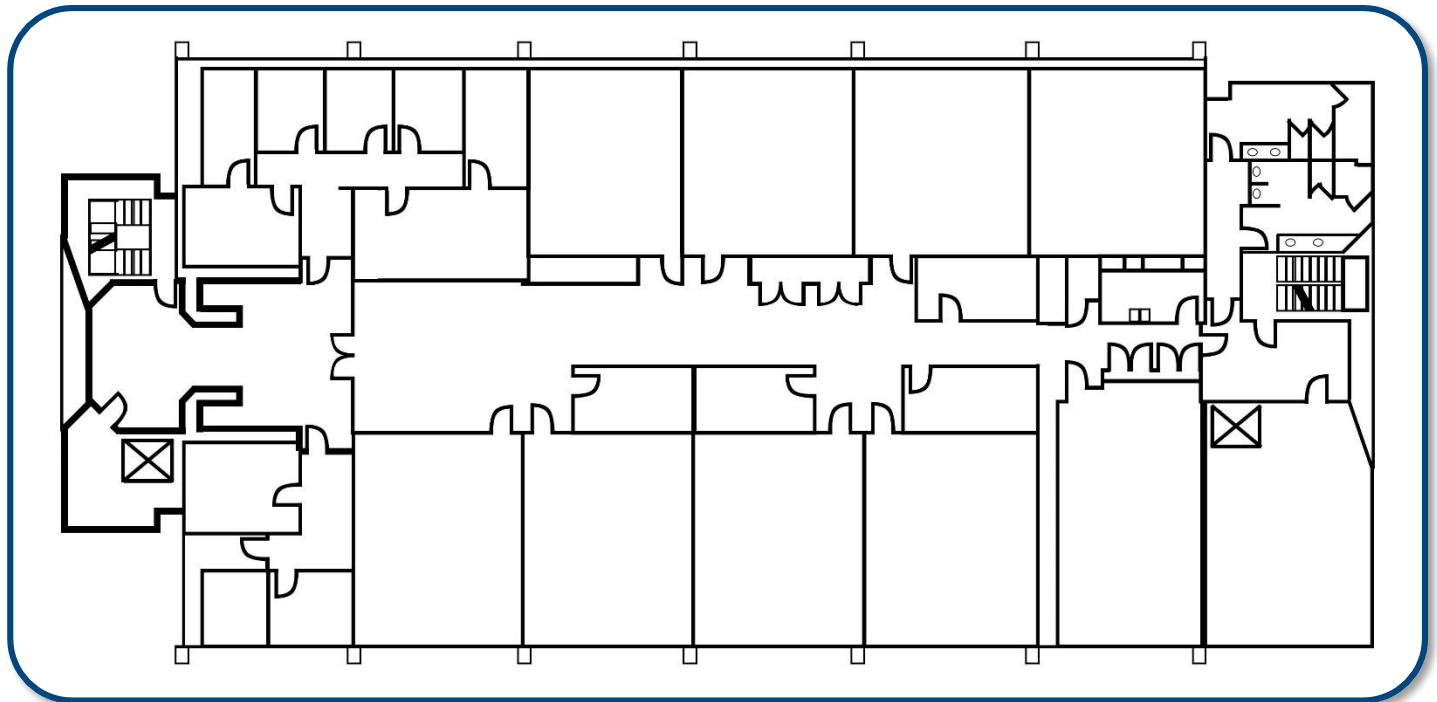
NORTHWESTERN CORPORATE CENTER

19675 W. 10 MILE ROAD | SOUTHFIELD, MICHIGAN



> FLOOR PLAN – 4TH FLOOR – 13,536 RSF FULL FLOOR ONLY

(CURRENT FLOOR PLAN)



BRENT BESHEARS

PHONE 248 540 1000 EXT 1686

EMAIL brent.beshears@colliers.com



COLLIERS INTERNATIONAL

2 Corporate Dr. | Suite 300
Southfield, Michigan 48076

FOR LEASE > OFFICE

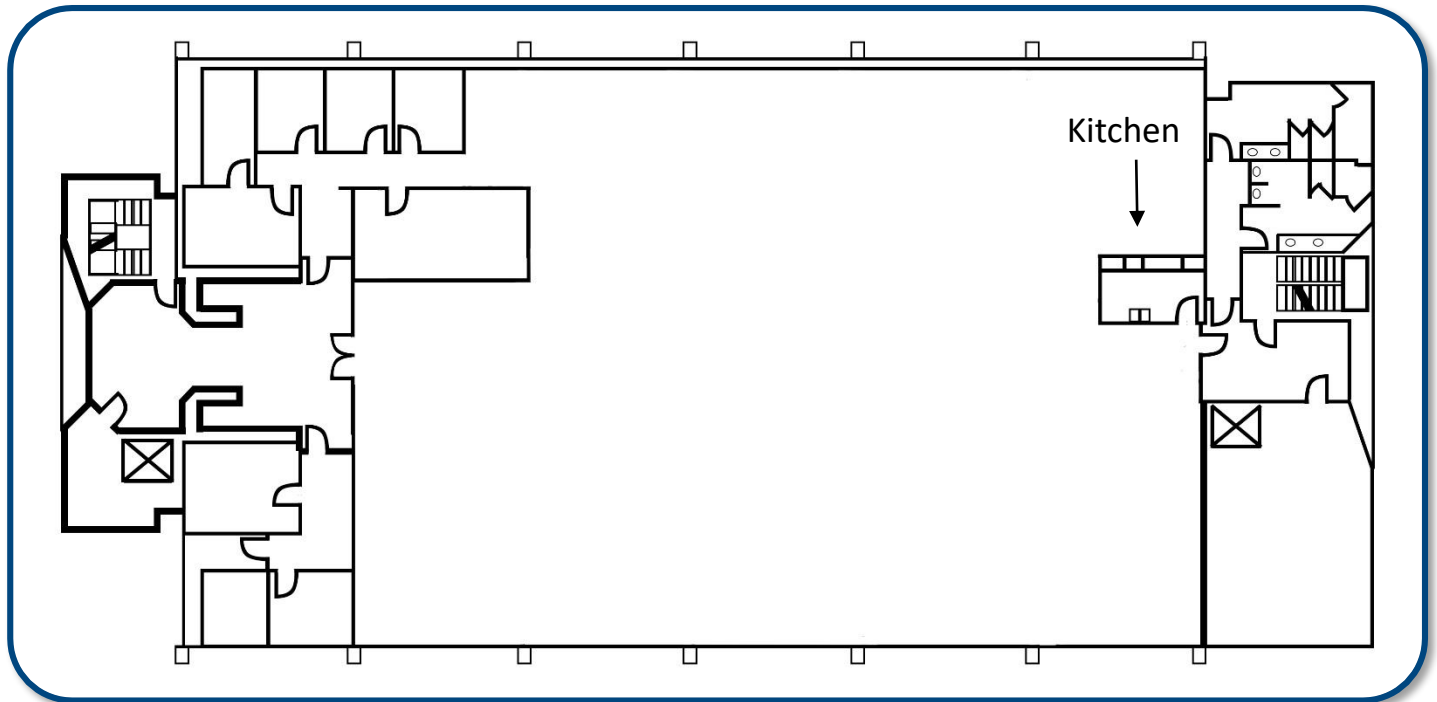
NORTHWESTERN CORPORATE CENTER

19675 W. 10 MILE ROAD | SOUTHFIELD, MICHIGAN



> FLOOR PLAN – 4TH FLOOR – 13,536 RSF FULL FLOOR ONLY

(PROPOSED FLOOR PLAN SCHEDULED FOR DEMO)



BRENT BESHEARS

PHONE 248 540 1000 EXT 1686

EMAIL brent.beshears@colliers.com



COLLIERS INTERNATIONAL

2 Corporate Dr. | Suite 300
Southfield, Michigan 48076

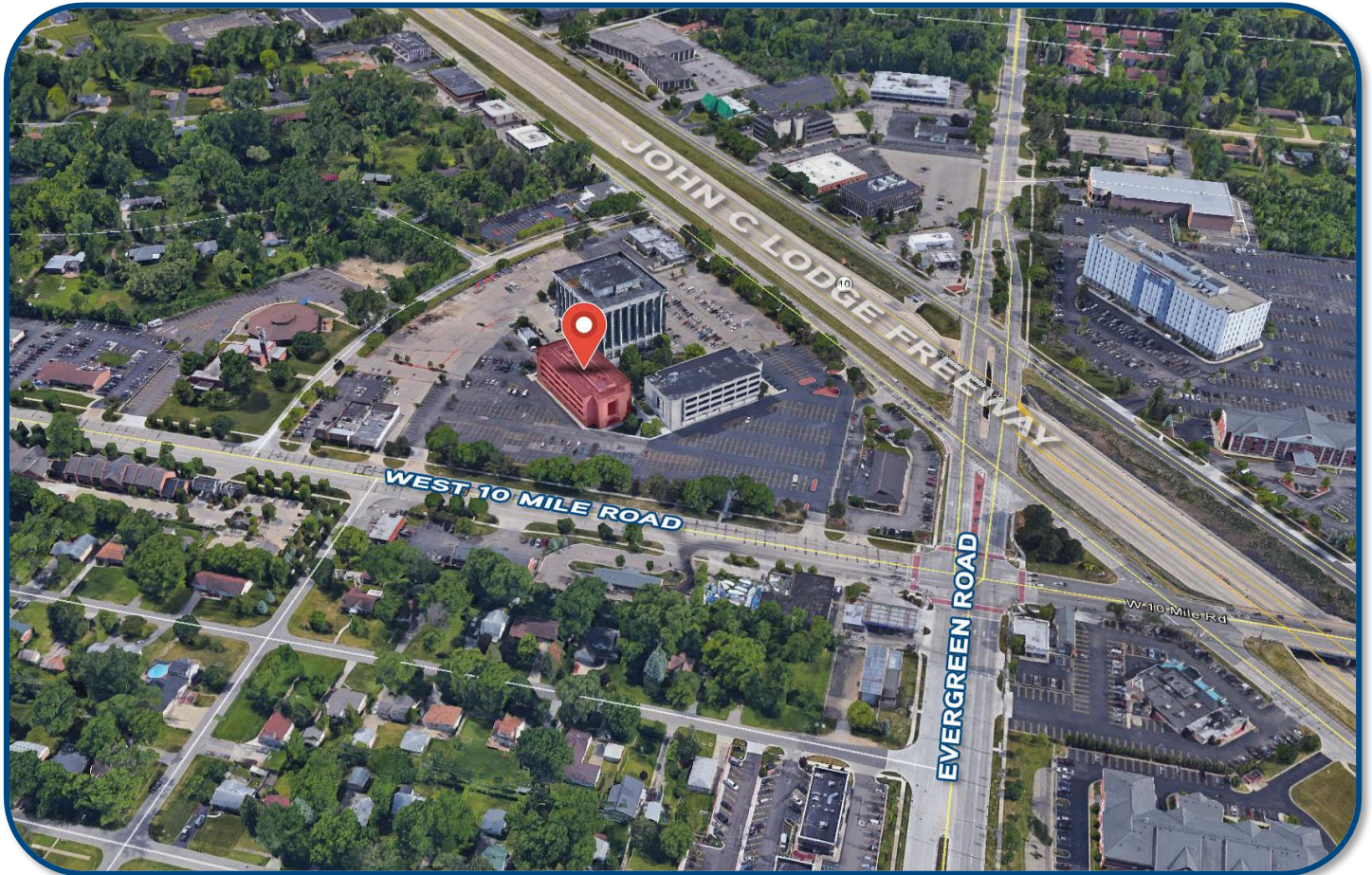
FOR LEASE > OFFICE

NORTHWESTERN CORPORATE CENTER

19675 W. 10 MILE ROAD | SOUTHFIELD, MICHIGAN



> AERIAL



BRENT BESHEARS

PHONE 248 540 1000 EXT 1686

EMAIL brent.beshears@colliers.com



COLLIERS INTERNATIONAL

2 Corporate Dr. | Suite 300
Southfield, Michigan 48076

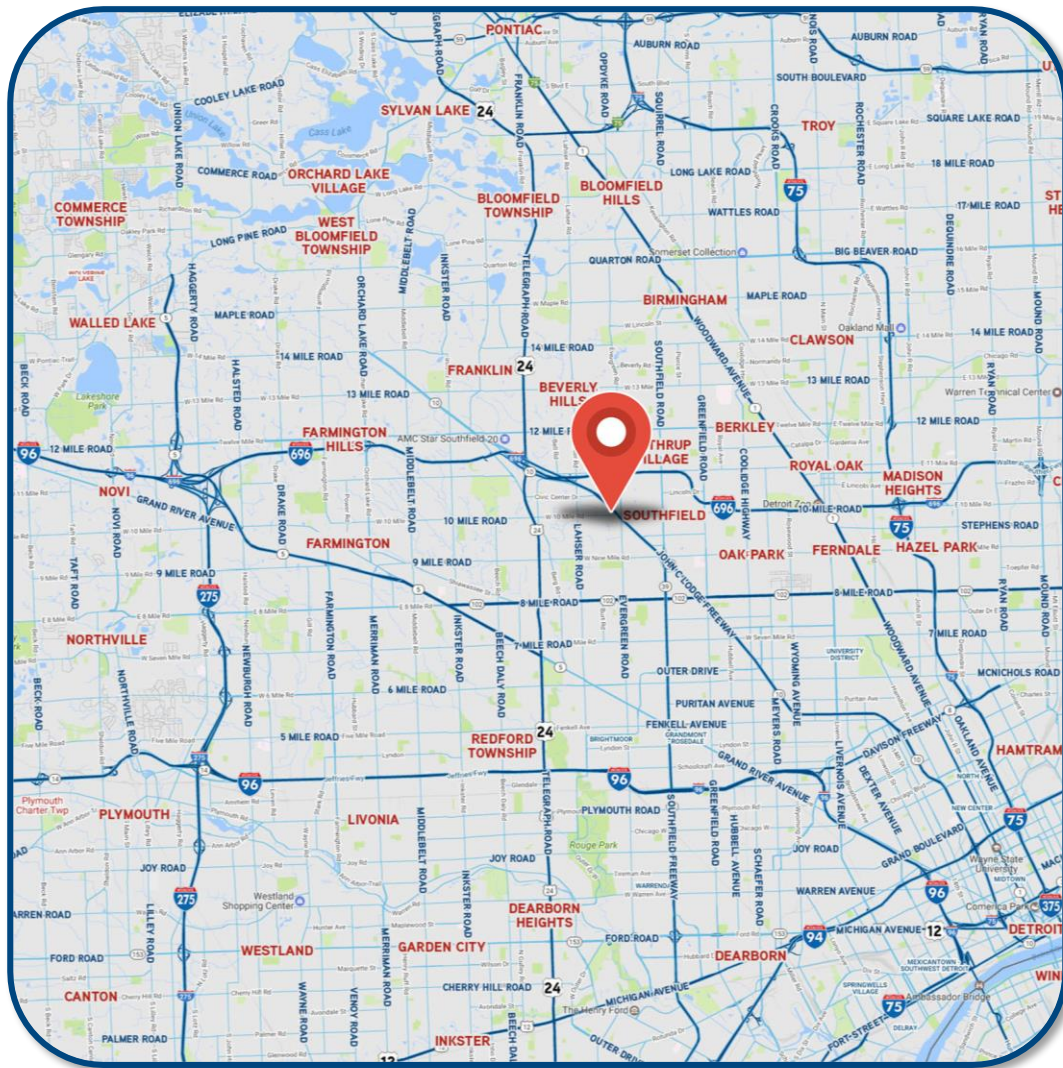
FOR LEASE > OFFICE

NORTHWESTERN CORPORATE CENTER

19675 W. 10 MILE ROAD | SOUTHFIELD, MICHIGAN



> LOCATION MAP



BRENT BESHEARS
PHONE 248 540 1000 EXT 1686
EMAIL brent.beshears@colliers.com



COLLIERS INTERNATIONAL
2 Corporate Dr. | Suite 300
Southfield, Michigan 48076