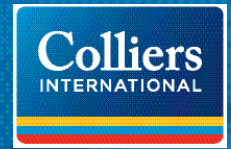


AVAILABLE > INDUSTRIAL SPACE > ±52,708 SF



# Warehouse B and Office

10700 FARROW ROAD BLYTHEWOOD, SOUTH CAROLINA 29016



## Property Information

<b>Location:</b>	10700 Farrow Road Blythewood, SC 29016	<b>Interstate Access:</b>	Interstate 77: 2 miles Interstate 20: 8 miles
<b>Building Area:</b>	Building SF: ± 280,468 SF Warehouse B: ± 45,985 SF Office B: ± 8,192 SF	<b>Rail:</b>	Norfolk Southern Dual Spur
<b>Site:</b>	26 acres	<b>Sprinkler:</b>	100% wet
<b>Former Use:</b>	Manufacturing/Warehousing	<b>Power:</b>	10,500 KVA Transformer
<b>Year Built:</b>	1971   Improvements 2016	<b>HVAC:</b>	100% heated and cooled
<b>County:</b>	Richland County	<b>Parking:</b>	425 spaces
<b>Ceiling Heights:</b>	27' clear heights	<b>Bay Sizes:</b>	40' x 40'
<b>Lease Rate:</b>	\$3.85 PSF NNN	<b>Dock Bay:</b>	(1) Drive-in door *expandable
		<b>Miscellaneous:</b>	(3) 5-ton cranes (4) 2-ton cranes Potential trailer drop areas

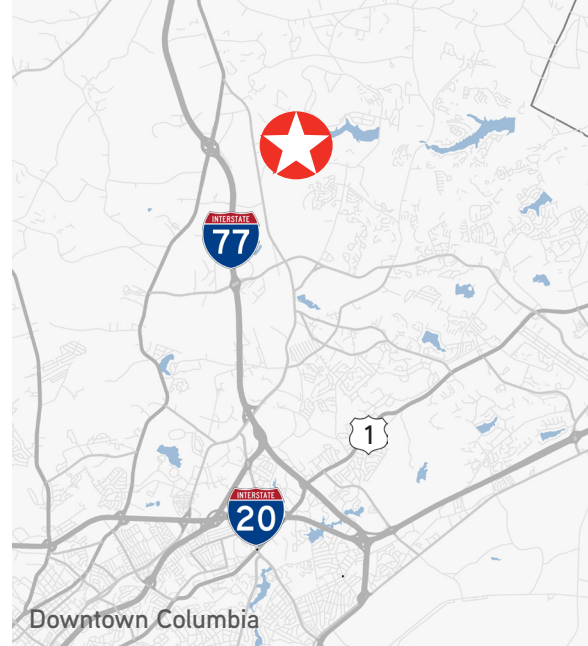
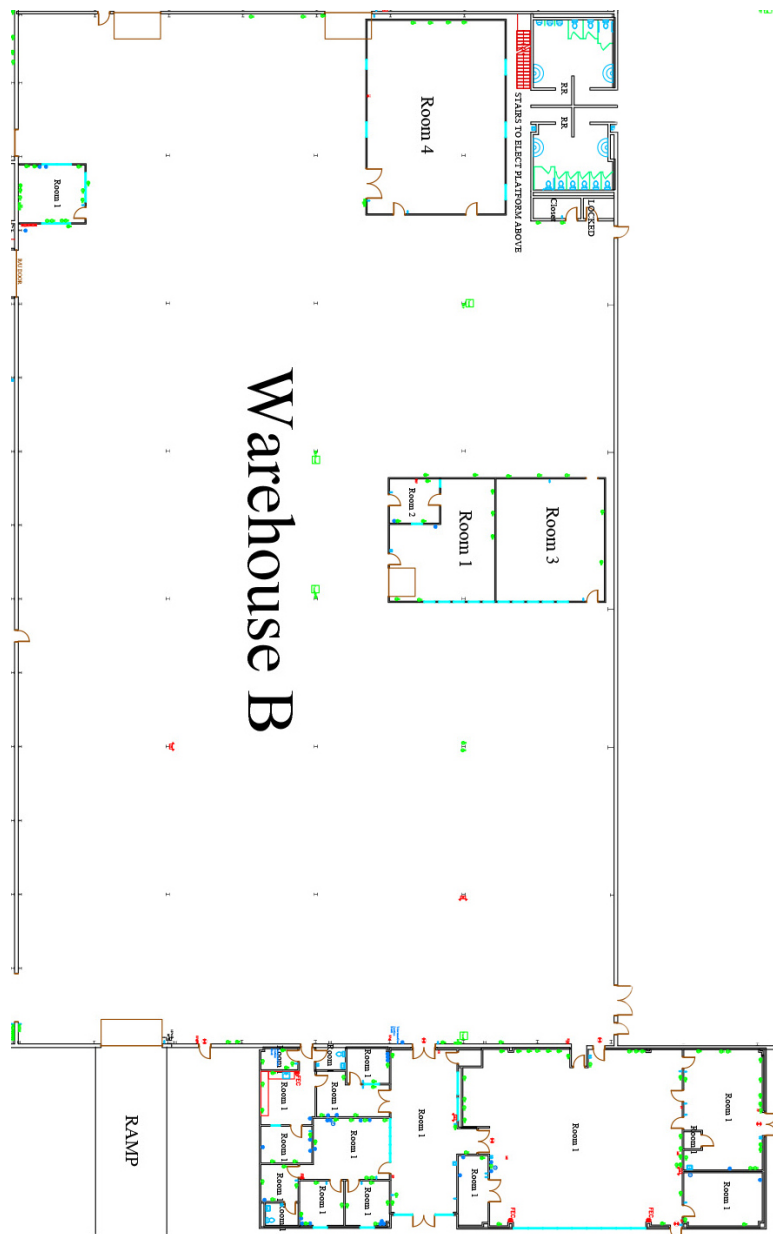
CHUCK W. SALLEY, SIOR  
803 401 4266 DIRECT  
chuck.salley@colliers.com

DAVE MATHEWS, SIOR  
803 401 4293 DIRECT  
dave.mathews@colliers.com

THOMAS BEARD  
803 401 4247 DIRECT  
thomas.beard@colliers.com

COLLIERS INTERNATIONAL  
1301 Gervais Street, Suite 600  
Columbia, South Carolina 29201  
www.colliers.com

## 10700 Farrow Rd. > Warehouse B Floor Plan



### Contact Us

CHUCK W. SALLEY, SIOR  
803 401 4266 DIRECT  
[chuck.salley@colliers.com](mailto:chuck.salley@colliers.com)

DAVE MATHEWS, SIOR  
803 401 4293 DIRECT  
[dave.mathews@colliers.com](mailto:dave.mathews@colliers.com)

THOMAS BEARD  
803 401 4247 DIRECT  
[thomas.beard@colliers.com](mailto:thomas.beard@colliers.com)

COLLIERS INTERNATIONAL  
1301 Gervais Street  
Suite 600  
Columbia, South Carolina 29201  
[www.colliers.com](http://www.colliers.com)