

FOR LEASE > QUALITY OFFICE SPACE

2455 W. Shaw Avenue

FRESNO, CALIFORNIA



- Located on Shaw Avenue, between Marks and Van Ness
- Excellent Shaw Avenue Signage
- Upgraded Interior Improvements
- Nearby Several Retail Amenities



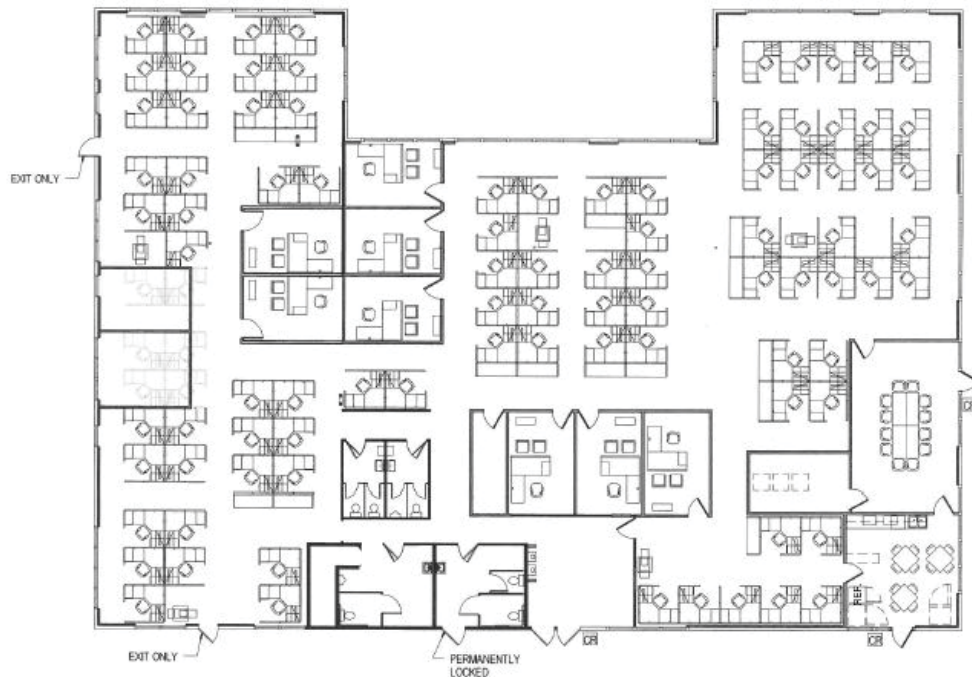
AGENT: MICHAEL SCHUH
559 256 2449
FRESNO, CA
michael.schuh@colliers.com
BRE #01195311

COLLIERS INTERNATIONAL
7485 N. Palm Avenue, #110
Fresno, CA 93711
www.colliers.com/fresno

FOR LEASE > OFFICE SPACE

Property Summary

2455 W SHAW AVENUE, FRESNO, CALIFORNIA

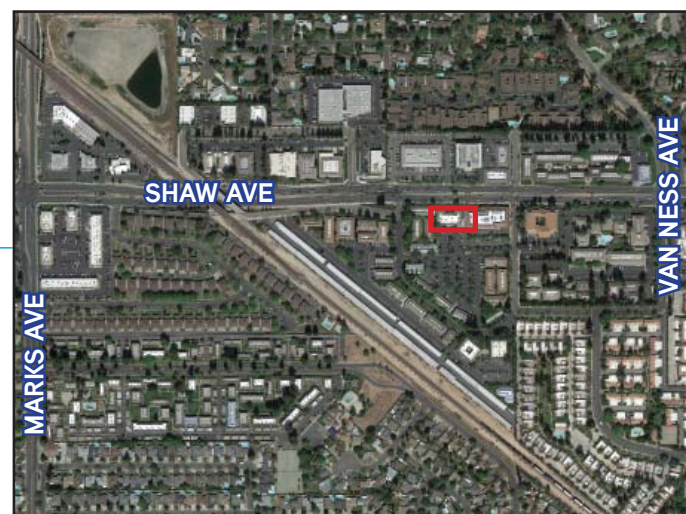


Quality Office Space

This attractive office building is well located on the West Shaw corridor, providing easy access to the many services and restaurants, Banks, etc. within walking distance.

Building Amenities

- > Available Space: Approximately 10,305 rentable square feet
- > Lease Rate: \$0.98 per square foot. Tenant pays utilities and janitorial services for leased premises.
- > Signage: Two monument pylon signs available.
- > Parking: Abundant, parking field to the south of building



This document has been prepared by Colliers International for advertising and general information only. Colliers International makes no guarantees, representations or warranties of any kind, expressed or implied, regarding the information including, but not limited to, warranties of content, accuracy and reliability. Any interested party should undertake their own inquiries as to the accuracy of the information. Colliers International excludes unequivocally all inferred or implied terms, conditions and warranties arising out of this document and excludes all liability for loss and damages arising there from. This publication is the copyrighted property of Colliers International and/or its licensor(s). ©2015. All rights reserved.

