

Kakaako Commerce Center

875 WAIMANU STREET, HONOLULU, HAWAII 96813



FOR LEASE INDUSTRIAL PROPERTY

Property Highlights

| | |
|----------------------|---|
| TMK: | (1) 2-1-49-45 |
| Zoning: | KAK-HCDA |
| Available Space: | 829 SF to 7,056 SF |
| Base Rent: | \$1.30 to \$1.50 PSF/Month |
| CAM: | \$0.44 to \$0.61 PSF/Month (estimated for 2017) |
| Parking: | Single - \$90/Month/Stall Tandem - \$160/Month/Stall |
| Features & Benefits: | <ul style="list-style-type: none">› Office space available for users with separate office needs› Two common loading docks and common restrooms on each floor› High cube ceiling heights› 24-hour security› Electric included in CAM› Located in an area with a rapidly decreasing industrial inventory |

Property Description

Kakaako Commerce Center offers a rare opportunity to lease prime industrial warehouse space with flexible space options. This property provides a common loading dock off Kawaiahao Street that is capable of servicing 40' containers, a second loading dock to service flat beds or box trucks, common mens and womens restrooms on each floor and 24-hour security on property.

1st floor units offer grade level roll-up doors, small office spaces and private restrooms. The 4th floor space provides a flexible layout, allowing a user the option of acquiring the entire floor or carve out a smaller portion to better fit their operational needs. Users have access to the loading dock and freight elevator, with vehicle access to the floor adding convenience and efficiency.

Kakaako Commerce Center

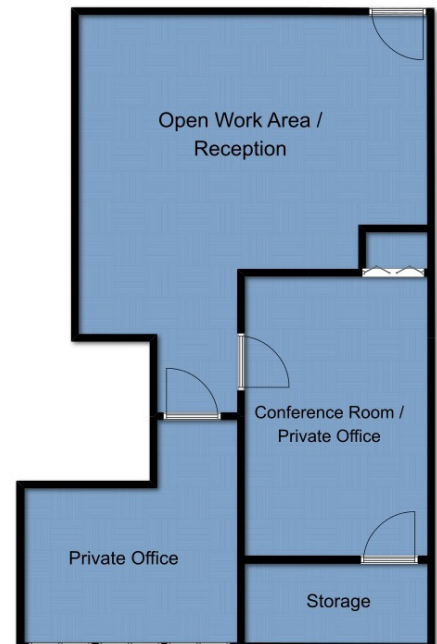
875 WAIMANU STREET, HONOLULU, HAWAII 96813



Available Units

| Units | Size |
|----------|----------------|
| Unit 105 | 7,056 SF |
| Unit 109 | 5,014 SF (MTM) |
| Unit 223 | 886 SF |
| Unit 304 | 829 SF |
| Unit 307 | 2,291 SF |
| Unit 320 | 1,663 SF |
| Unit 321 | 1,062 SF (MTM) |
| Unit 327 | 1,172 SF (MTM) |

| Units | Size |
|----------|----------------|
| Unit 329 | 1,970 SF |
| Unit 508 | 3,014 SF (MTM) |
| Unit 514 | 2,295 SF |
| Unit 518 | 1,984 SF |
| Unit 527 | 1,231 SF (MTM) |



ALIKA W. COSNER (S)
Industrial Services Division
808 523 8339
alika.cosner@colliers.com

COLLIERS INTERNATIONAL
220 South King Street, Suite 1800
Honolulu, HI 96813
www.colliershawaii.com