

# For Lease

145 Railway Street W  
Loretto, MN 55357

## DAN FRIEDNER

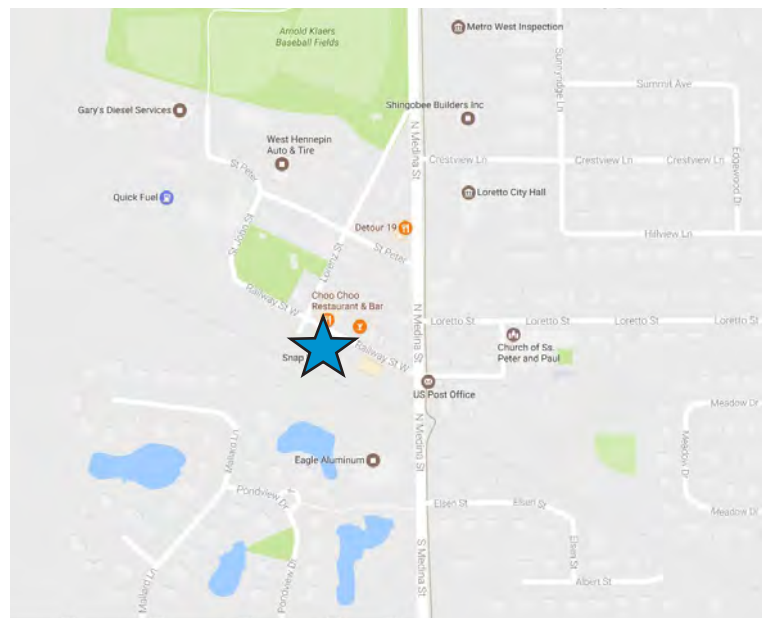
952 897 7863 direct  
612 599 7864 mobile  
dan.friedner@colliers.com

## JUSTIN RATH

952 897 7803 direct  
612 720 6957 mobile  
justin.rath@colliers.com



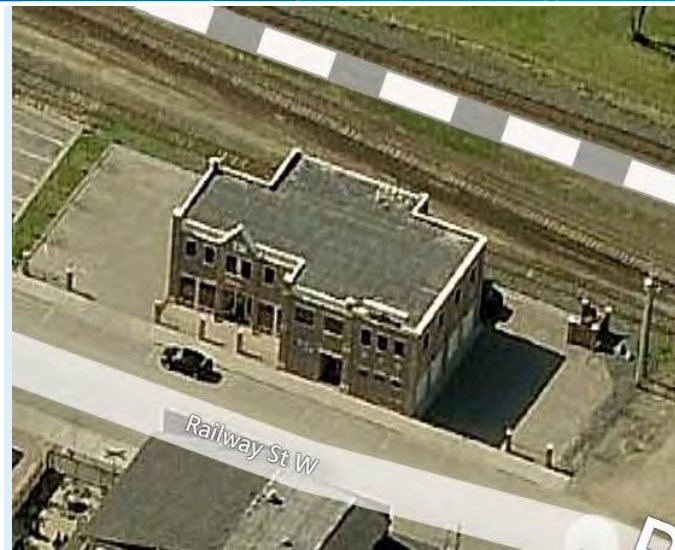
**COLLIERS INTERNATIONAL**  
5985 Rice Creek Parkway  
Suite 105  
Shoreview, MN 55126  
[www.colliers.com/msp](http://www.colliers.com/msp)





## FOR SALE

Property Address:	145 Railway Street W, Loretto
First Floor Retail:	2,285 square feet \$17.95 per square foot gross \$3,417.98 per month plus gas, electrical, phone/data, janitorial services & garbage
Garage Unit #1:	456 square feet, two garage doors \$7.24 per square foot gross \$275 per month
Garage Unit #2:	456 square feet, two garage doors \$7.24 per square foot gross \$275 per month
Second Floor Office:	1,443 square feet \$17.95 per square foot gross \$2,158.49 per month plus gas, electrical, phone/data, janitorial services & garbage
Amenities:	Fabulous restaurants next door, great location



## Contact Info

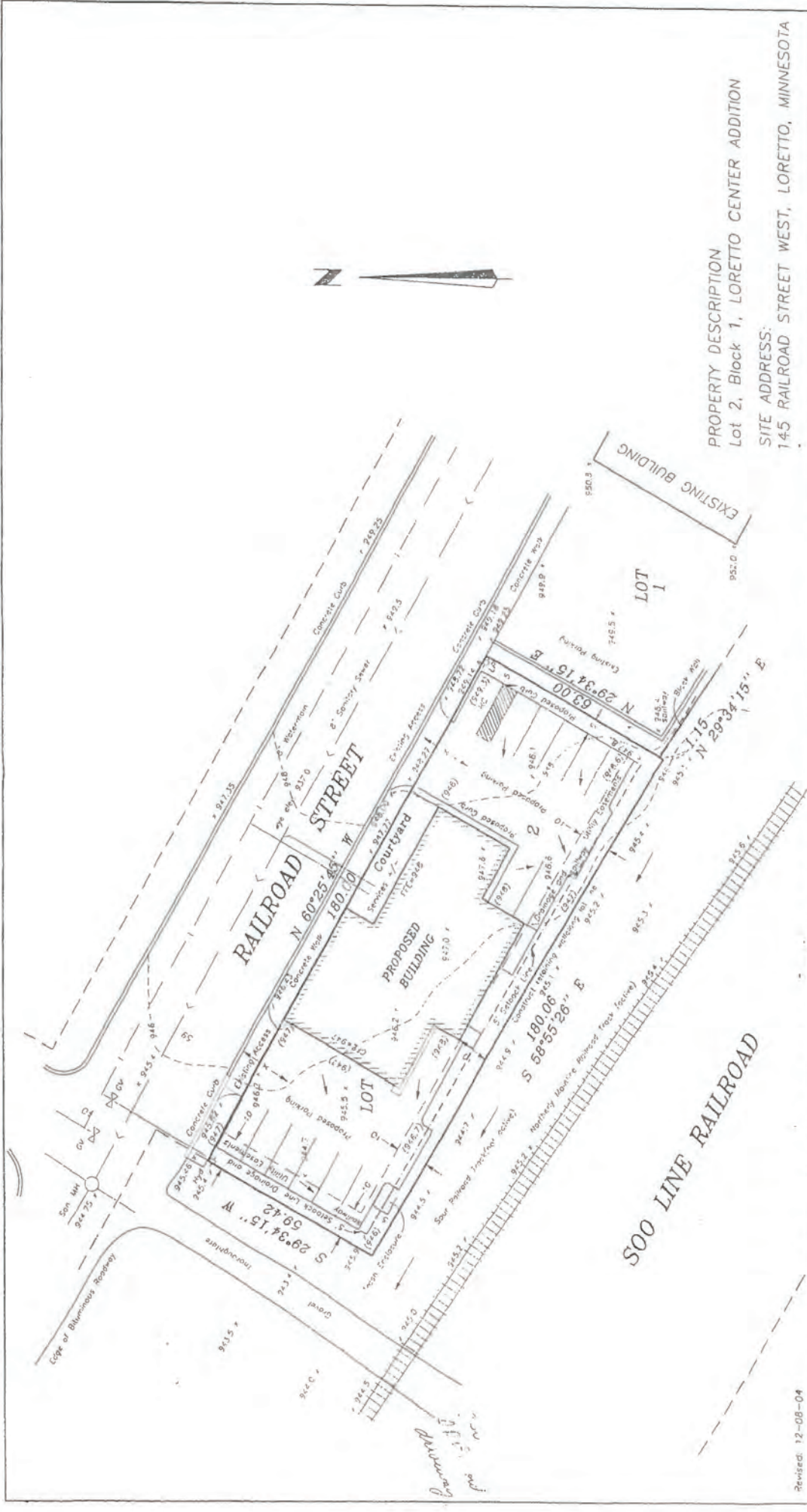
**DAN FRIEDNER**  
952 897 7863 direct  
612 599 7864 mobile  
[dan.friedner@colliers.com](mailto:dan.friedner@colliers.com)

**JUSTIN RATH**  
952 897 7803 direct  
612 720 6957 mobile  
[justin.rath@colliers.com](mailto:justin.rath@colliers.com)

This document/email has been prepared by Colliers International for advertising and general information only. Colliers International makes no guarantees, representations or warranties of any kind, expressed or implied, regarding the information including, but not limited to, warranties of content, accuracy and reliability. Any interested party should undertake their own inquiries as to the accuracy of the information. Colliers International excludes unequivocally all inferred or implied terms, conditions and warranties arising out of this document and excludes all liability for loss and damages arising there from. This publication is the copyrighted property of Colliers International and/or its licensor(s). © 2016. All rights reserved. This communication is not intended to cause or induce breach of an existing listing agreement.



**COLLIERS INTERNATIONAL**  
5985 Rice Creek Parkway  
Suite 105  
Shoreview, MN 55126  
[www.colliers.com/msp](http://www.colliers.com/msp)



PROPERTY DESCRIPTION  
 Lot 2, Block 1, LORETTO CENTER ADDITION

SITE ADDRESS:  
 145 RAILROAD STREET WEST, LORETTO, MINNESOTA

PRELIMINARY DRAINAGE PLAN for:

**PRESERVATION PROPERTIES**  
 P.O. Box 35  
 Loretto, Minnesota 55357-0035

I hereby certify that this survey, plan or report was prepared by me or under my direct supervision and that I am a duly Registered Land Surveyor under the Laws of the State of Minnesota.

**DEMARS-GABRIEL  
 LAND SURVEYORS, INC.**

3030 Harbor Lane No.  
 Plymouth, MN 55447  
 Phone: (763) 559-0908  
 Fax: (763) 559-0479

File No.  
 12700 B

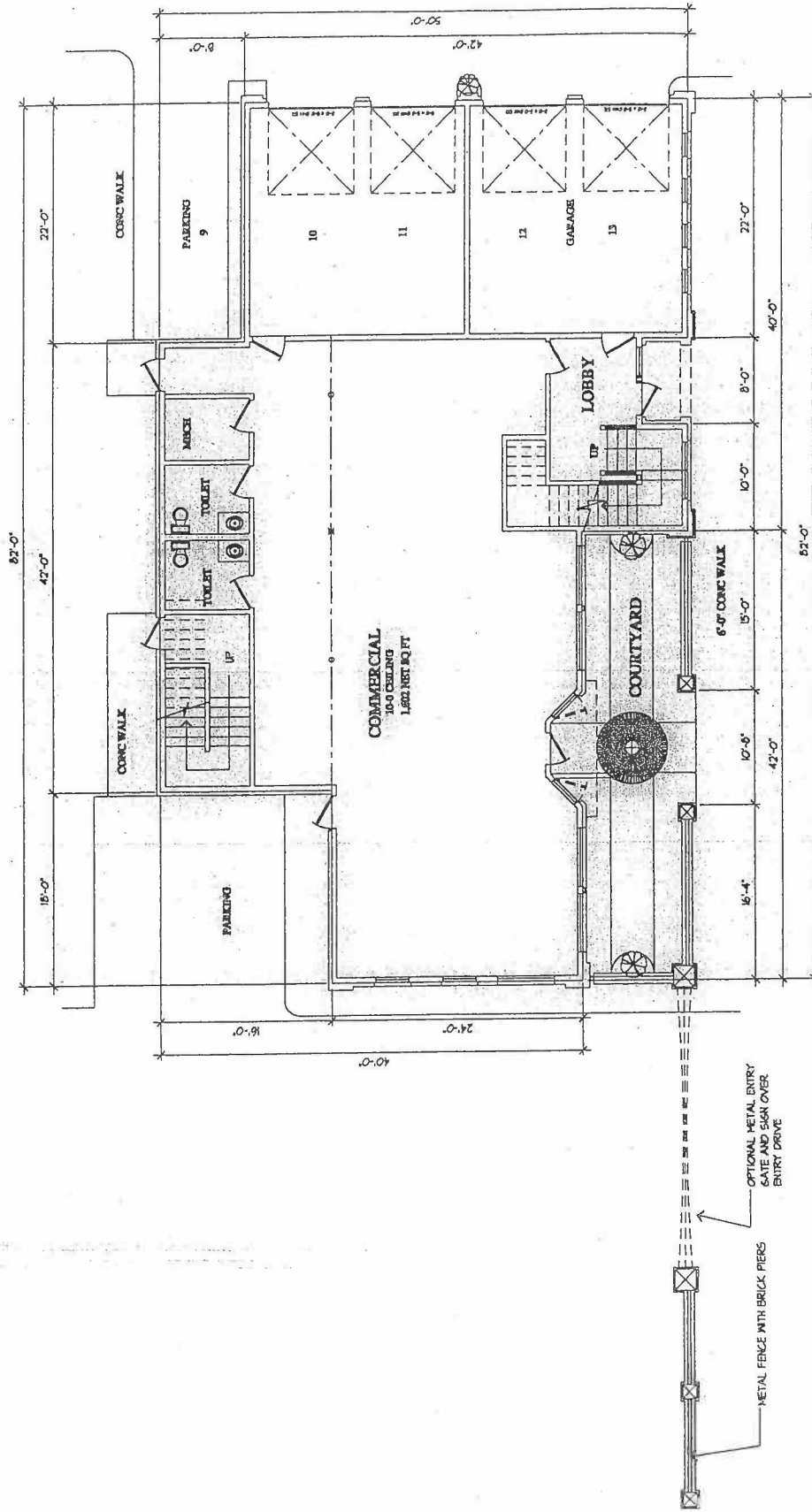
Book-Page  
 427-8

Scale  
 1"=30'

Date: 11-20-04 Minn. Reg. No. 22414

*ODE*  
 David E. Crook

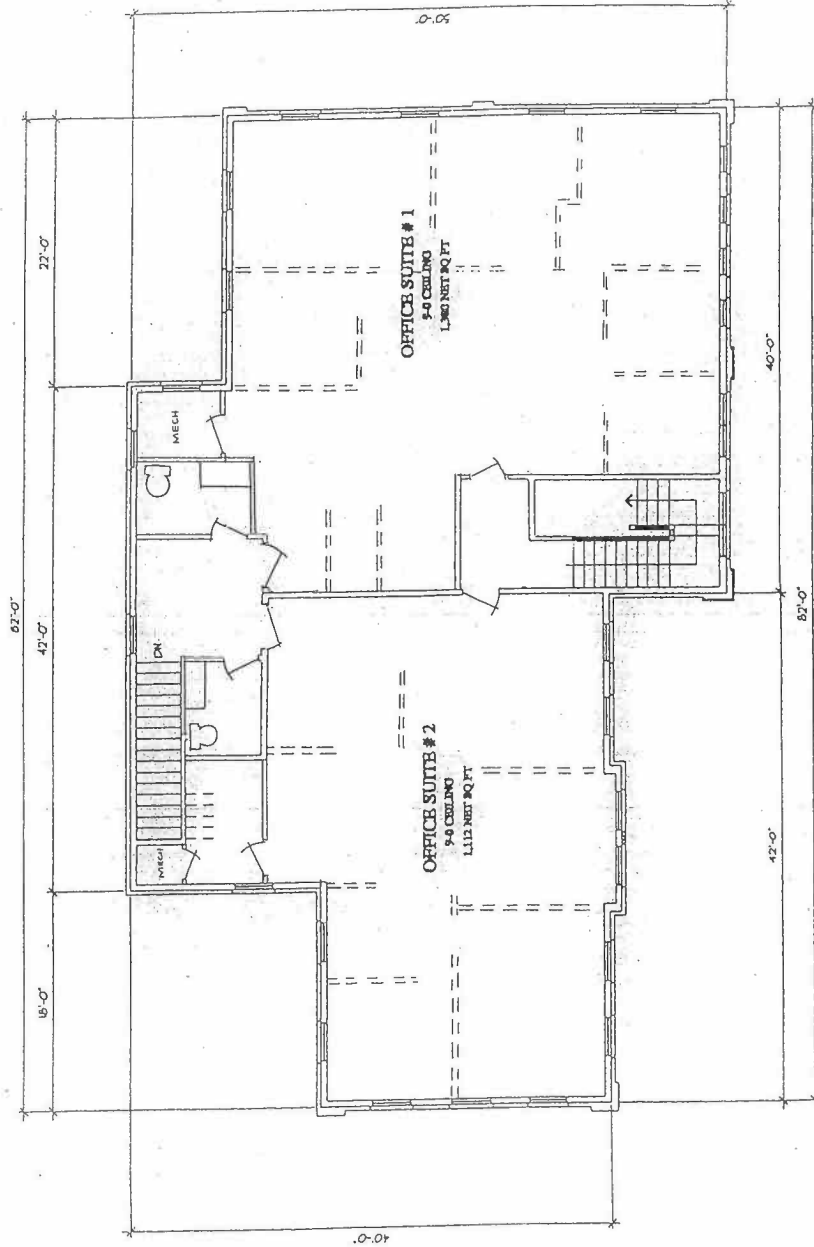




CUNDY, SANTINE & ASSOCIATES  
**ARCHITECTS**  
 3434 LEXINGTON AVENUE N. SHOREVIEW, MN 55126  
 651-490-5454

**FIRST FLOOR PLAN**  
**RAILWAY STREET COMMONS**  
 LORETO, MINNESOTA

PROJECT NO:	DATE: 11-14-04
SHEET NO:	REVISIONS:
02	



## SECOND FLOOR PLAN

### RAILWAY STREET COMMONS

LORETTA, MINNESOTA

PROJECT NO. DATE: 11-19-04

REVISIONS:

OF