



## 4104 West 6th Street Suite C, Lawrence, Kansas

Office Space For Lease  
2,543 SF

- Stylish, multi-tenant office building with 6th Street monument signage
- Lease rate: \$14/SF, NNN (est. \$7/SF)
- Total monthly rate: \$4,450.24
- Featuring five private offices, built-in reception desk, open work area with built-ins, waiting room, kitchen, storage, and access to basement tornado shelter
- Zoning: PCD
- Year built: 2004

Asking rent:

**\$14**/SF, NNN

**Contact us:**

**Allison Vance Moore** SIOR

Senior Vice President  
+1 785 865 3924  
allison.moore@colliers.com

**J. Taylor**

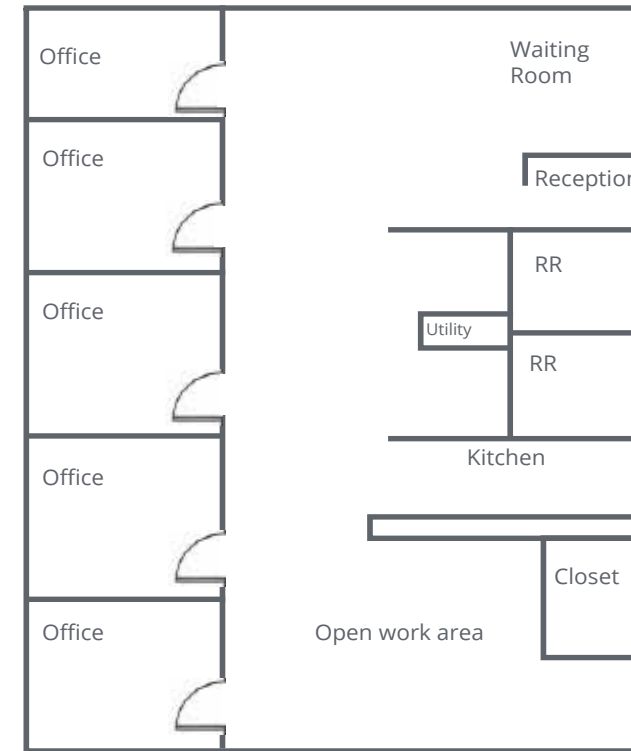
Vice President  
+1 785 766 9484  
j.taylor@colliers.com

**Colliers Lawrence**

3705 Clinton Parkway, Suite 201  
Lawrence, KS 66047  
+1 785 865 5100

# Photo Gallery

# Floor Plan



# Aerial



## Contact us:



**Allison Vance Moore** SIOR  
Senior Vice President  
+1 785 865 3924  
allison.moore@colliers.com



**J. Taylor**  
Vice President  
+1 785 766 9484  
j.taylor@colliers.com

**Colliers Lawrence**  
3705 Clinton Parkway, Suite 201  
Lawrence, KS 66047  
+1 785 865 5100

This document has been prepared by Colliers International for advertising and general information only. Colliers International makes no guarantees, representations or warranties of any kind, expressed or implied, regarding the information including, but not limited to, warranties of content, accuracy and reliability. Any interested party should undertake their own inquiries as to the accuracy of the information. Colliers International excludes unequivocally all inferred or implied terms, conditions and warranties arising out of this document and excludes all liability for loss and damages arising there from. This publication is the copyrighted property of Colliers International and/or its licensor(s). © 2022. All rights reserved.



Accelerating success.