

RETAIL/OFFICE > AVAILABLE

260 Boush Street | Norfolk, VA 23510



DOWNTOWN NORFOLK

The former Market at Harbor Heights is located in the heart of Downtown Norfolk, which has evolved into the premier spot in Norfolk to live, work, and play. New construction along with stylish renovations are drawing all ages. Nearly 6,200 people reside in Downtown Norfolk, double since 2010. This unique opportunity provides a creative way to entice new tenants to Downtown Norfolk.



PROPERTY FEATURES

- > 37,065 SF available on first floor (subdividable)
- > Approximately 95 parking spaces on second floor
- > Two street entrances
- > Zoned D-3
- > CAM \$0.75
- > Taxes \$1.93
- > **Lease price: \$13.09 SF/NNN**

CONTACT

Sharon Holmstrom

Retail Brokerage

+1 757 441 3636

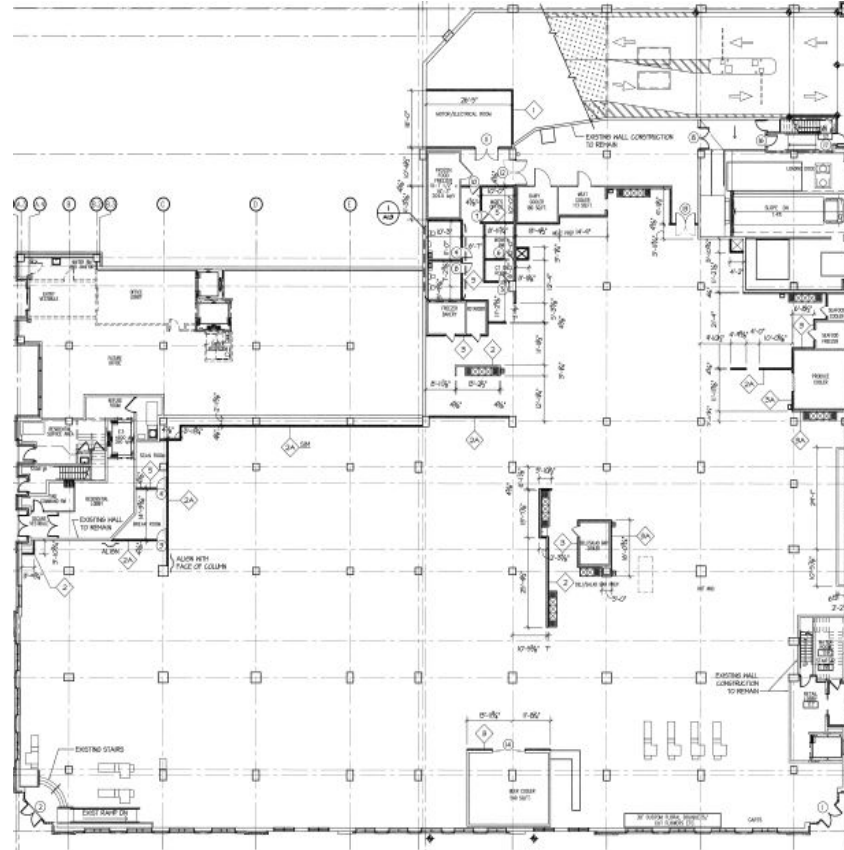
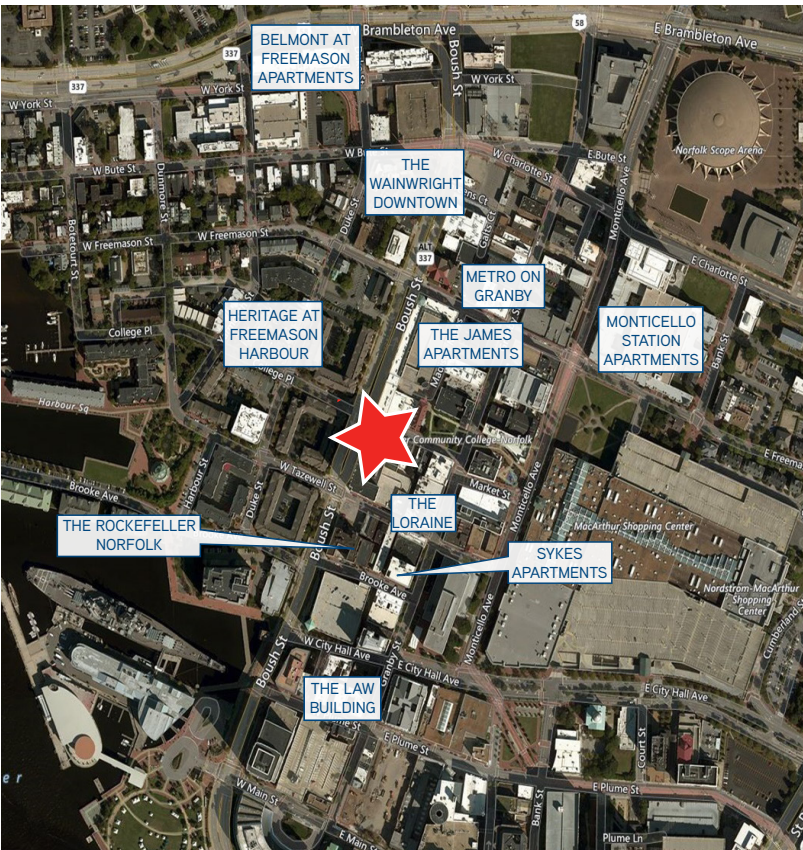
sharon.holmstrom@colliers.com



COLLIERS INTERNATIONAL
500 E. Main Street, Suite 808
Norfolk, VA 23510
757 441 3636
www.colliers.com/norfolk

RETAIL >
37,065 SF
SUBDIVIDABLE

260 BOUSH STREET | NORFOLK, VA 23510



CONTACT

Sharon Holmstrom

Retail Brokerage

+1 757 441 3636

sharon.holmstrom@colliers.com



COLLIERS INTERNATIONAL
500 E. Main Street, Suite 808

Norfolk, VA 23510

757 441 3636

www.colliers.com/norfolk

DEMOGRAPHIC FACTS	1 mile	3 miles	5 miles
Population	16,093	133,215	279,598
Daytime Employees	58,125	112,731	211,353
Average HH Income	\$76,540	\$59,226	\$61,536

The information contained herein was obtained from sources, believed reliable, however, Colliers International makes no guarantees, warranties or representations as to the completeness or accuracy thereof. The presentation of this property is submitted subject to errors, omissions, change of price or conditions prior to sale or lease, or withdrawal without notice. File name: BoushStreet_260_Available rev. 12/18/2017