



RESTAURANT SPACE AVAILABLE

3905 PIEDMONT

AT THE HEART OF PIEDMONT AVENUE



Approximately ±2,041 SF second generation restaurant located in Oakland's bustling Piedmont Avenue District. In close proximity to abundant parking, this site is located at the heart of it all.



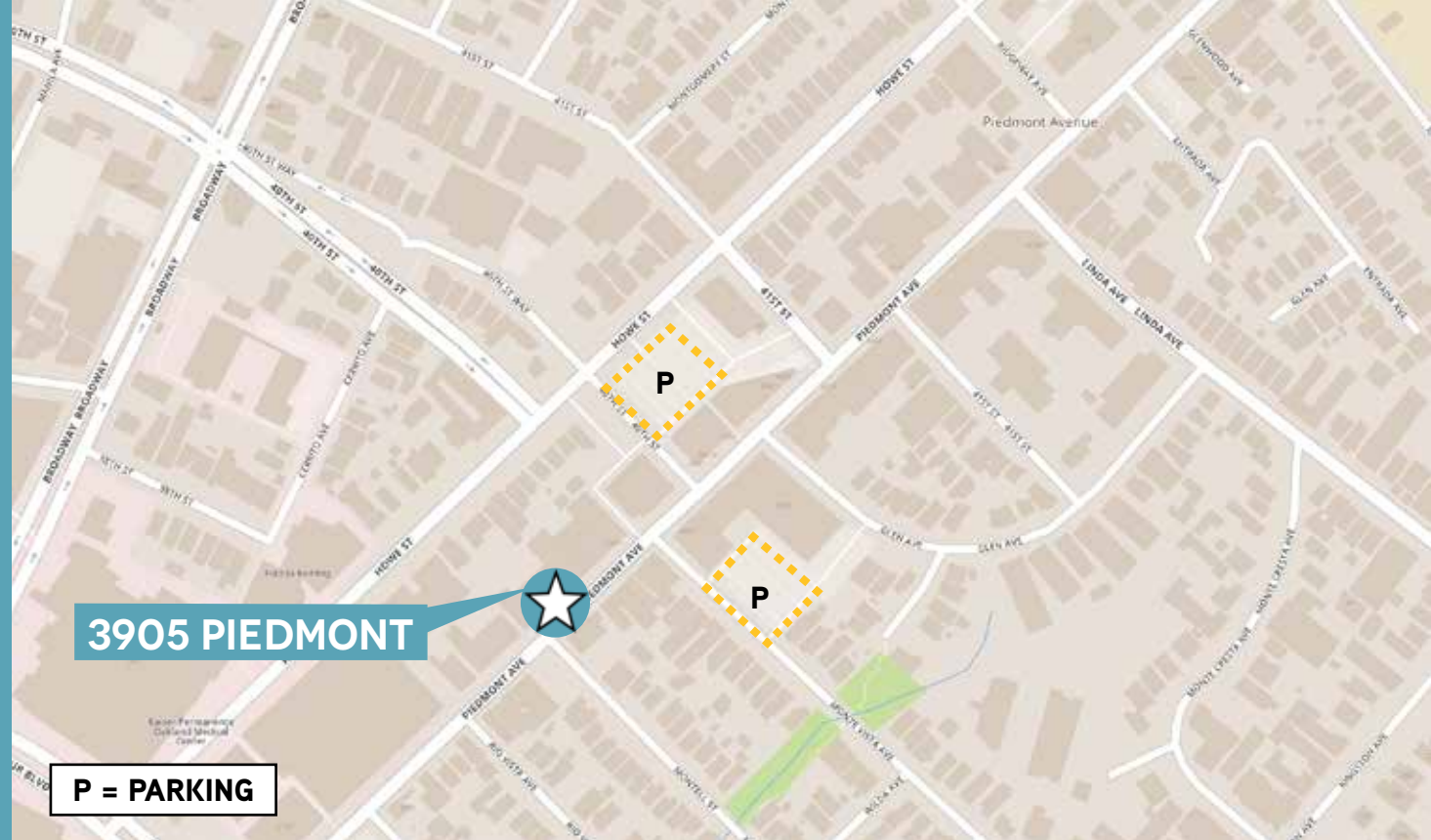
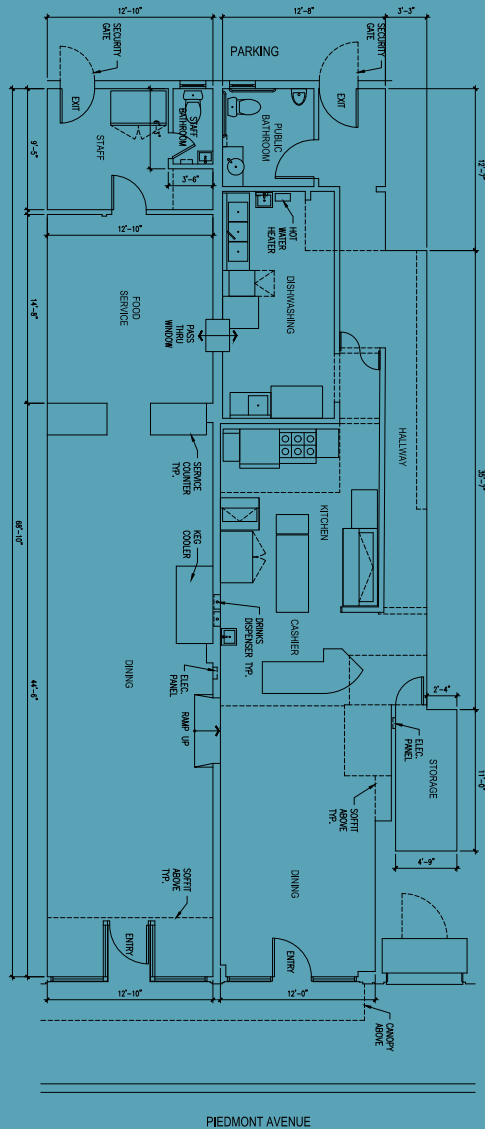
Accelerating success.

PIEDMONT AVE RETAIL



FLOOR PLANS

GROUND FLOOR ±2,041 SF



RESTAURANT SPACE AVAILABLE

3905 PIEDMONT

AT THE HEART OF PIEDMONT AVENUE

2018	0.5 mile	1 mile	3 mile
Population	13,123	46,076	298,192
Daytime Population	16,460	51,175	350,680
Average Income	\$99,779	\$101,142	\$102,790

This document has been prepared by Colliers International for advertising and general information only. Colliers International makes no guarantees, representations or warranties of any kind, expressed or implied, regarding the information including, but not limited to, warranties of content, accuracy and reliability. Any interested party should undertake their own inquiries as to the accuracy of the information. Colliers International excludes unequivocally all inferred or implied terms, conditions and warranties arising out of this document and excludes all liability for loss and damages arising there from. This publication is the copyrighted property of Colliers International and/or its licensors. ©2018. All rights reserved.



RESTAURANT SPACE AVAILABLE

3905 PIEDMONT

AT THE HEART OF PIEDMONT AVENUE

CONTACT

NADINE WHISNANT

+1 510 433 5858

nadine.whisnant@colliers.com

CA Lic. No. 00966437

TAMMY CHOY

+1 510 433 5860

tammy.choy@colliers.com

CA Lic. No. 0203115

COLLIERS INTERNATIONAL

1999 Harrison Street, Suite 1750

Oakland, CA 94612

510 986 6770

www.colliers.com/oakland