



\$2.00 FULL SERVICE

For Sublease

701 Gateway Blvd
South San Francisco, CA

±29,470 SF Office Space

- **Divisible**
- 5th Floor – Panoramic views
- Sublease thru LED: 3/31/2026
- Available immediately
- Potential plug and play
- Onsite café



Accelerating success.

1 North B Street, Suite 2700
San Mateo, CA, 94401
P: +1 650 486 2200
F: +1 650 486 2201
colliers.com

Rico Cheung

Executive Vice President
+1 415 519 1749
rico.cheung@colliers.com
CA Lic. 01067557

Kyle Hipple

Vice President
+1 415 259 7928
kyle.hipple@colliers.com
CA Lic. 02032124

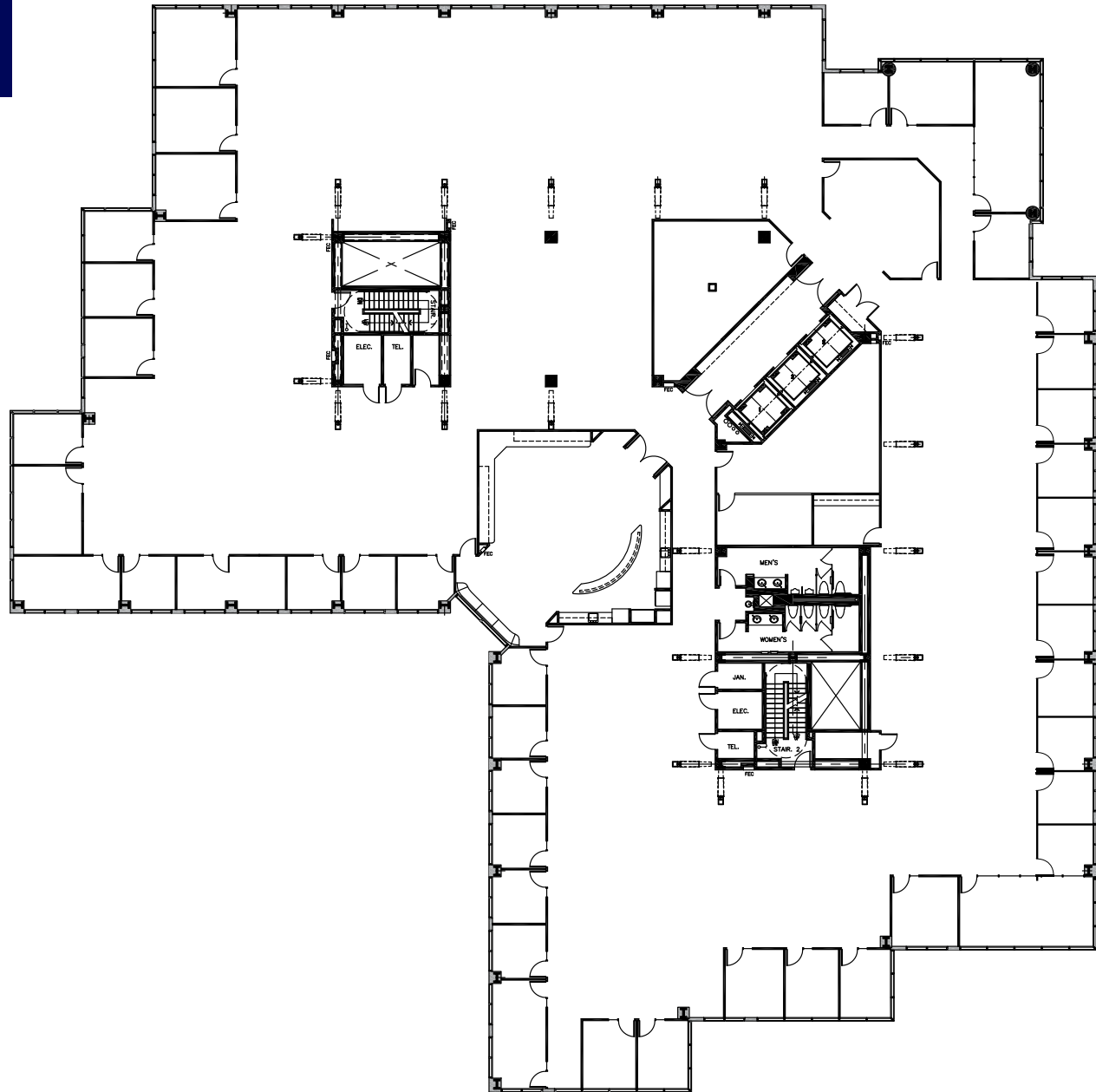
Tucker Forbes

Senior Vice President
+1 831 277 0968
tucker.forbes@colliers.com
CA Lic. 02028861

Floor Plan

5th Floor

- ±29,470 SF
- Perimeter private offices
- Boardroom
- Six conference rooms
- Large lunchroom



Gallery





1 North B Street, Suite 2700
San Mateo, CA, 94401
P: +1 650 486 2200
F: +1 650 486 2201
colliers.com

Rico Cheung

Executive Vice President
+1 415 519 1749
rico.cheung@colliers.com
CA Lic. 01067557

Kyle Hipple

Vice President
+1 415 259 7928
kyle.hipple@colliers.com
CA Lic. 02032124

Tucker Forbes

Senior Vice President
+1 831 277 0968
tucker.forbes@colliers.com
CA Lic. 02028861

