

# FORMER CHURCH FOR SALE

19632 Highway 108  
Sonora, California 95370



## PROPERTY

The subject property is a 3,098 square foot single building church facility situated in east Sonora, California. It is located on a 0.83 acre parcel with easy ingress and egress. Improvements include a main sanctuary, classrooms and restrooms. Utilities include private water and sewer and public electricity.

## HIGHLIGHTS

- › +/- 3,098 SF CHURCH FACILITY AVAILABLE NOW!
- › EXCELLENT LOCATION ALONG HIGHWAY 108
- › ZONED R-1, RESIDENTIAL IN THE COUNTY OF TUOLUMNE
- › CONVENIENT INGRESS/EGRESS
- › 2% CO-OP FEE TO ALL PROCURING BROKERS

## SALE PRICE

\$450,000.00

## DEMOGRAPHIC SNAPSHOT

	1 Mile	3 Mile	5 Mile
Population:	1,599	10,858	27,634
Housing Units:	814	5,244	13,531
Employees:	1,273	5,507	13,370
Avg HH Income:	\$72,216	\$74,460	\$70,565

*2017 estimates, Alteryx.com*

AGENT: GARRET TUCKNESS, CLS  
SENIOR VICE PRESIDENT  
CENTRAL CALIFORNIA  
DIR: 661.631.3811  
LICENSE NUMBER 01323185  
garret.tuckness@colliers.com

AGENT: JJ WOODS, CLS  
SENIOR VICE PRESIDENT  
CENTRAL CALIFORNIA  
DIR: 661.631.3807  
LICENSE NUMBER 01420570  
jj.woods@colliers.com

COLLIERS INTERNATIONAL  
10000 Stockdale Hwy., Suite 102  
Bakersfield, CA 93311  
www.colliers.com/bakersfield

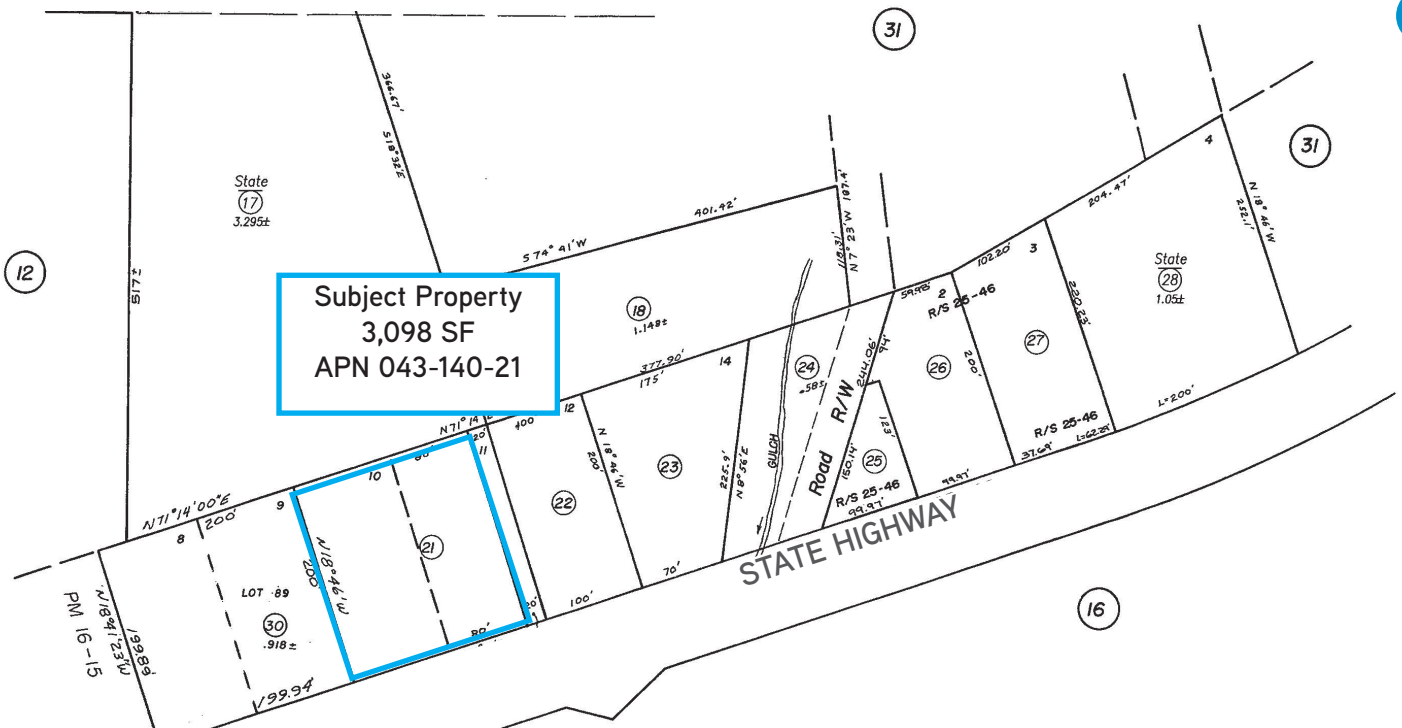
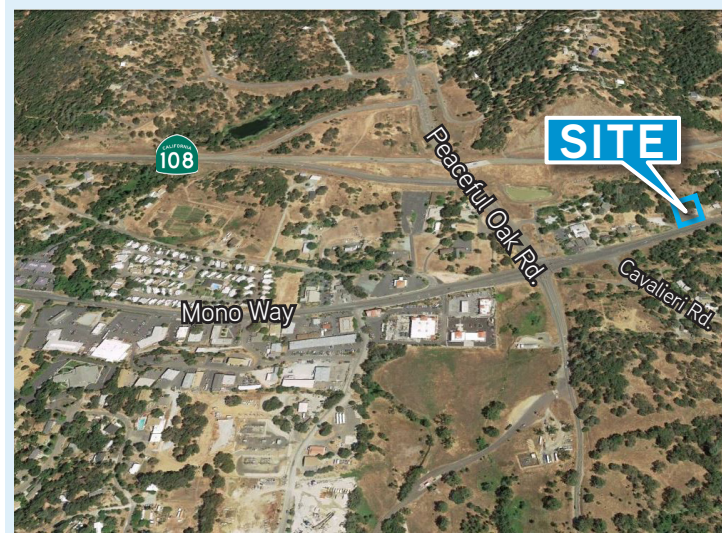
# FORMER CHURCH

19632 Highway 108  
Sonora, California 95370



## Site Details

Property Address:	19632 Highway 108, Sonora, California 95370
Site Area:	0.83 Acres; APN 043-140-21
Improvements:	Former church campus
Zoning:	R-1, Residential in the County of Tuolumne
Building Area:	Total: +/-3,098 SF
Sale Price:	<b>\$450,000.00</b>



## Contact Us

AGENT: GARRET TUCKNESS, CLS  
SENIOR VICE PRESIDENT |  
CENTRAL CALIFORNIA  
LICENSE NUMBER 01323185  
661 631 3811  
garret.tuckness@colliers.com

AGENT: JJ WOODS, CLS  
SENIOR VICE PRESIDENT |  
CENTRAL CALIFORNIA  
LICENSE NUMBER 01420570  
661 631 3807  
jj.woods@colliers.com

COLLIERS INTERNATIONAL  
10000 Stockdale Highway  
Suite 102  
Bakersfield, CA 93311  
www.colliers.com/bakersfield