

FOR SALE OR LEASE > OFFICE/MEDICAL CONDO SPACE

# Norterra Professional Plaza



2060 W. WHISPERING WIND DRIVE, PHOENIX, AZ 85085



This NEW office/medical condominium project is located south of the southeast corner of Happy Valley and 21st Avenue, within a seven acre professional office park in Deer Valley. The location offers lush landscaping, southwestern architecture, ample reserved covered parking, private entrances, signage and excellent access to Loop 101 and I-17 freeways.

**PROPERTY TYPE:** Class "A", office/medical condominium

**TOTAL BUILDING SIZE:** ±17,500 rentable square feet

**AVAILABLE:** Unit 260/264\* ±4,558 gross square feet, Sale or Lease - Currently an Executive Suite Operation  
Unit 270\*±2,838 gross square feet, Sale or Lease **SOLD!**

**PURCHASE PRICE:** Call For Pricing

**ANNUAL RENT:** Call For Pricing

**PARKING RATIO:** 4/1,000 covered available at \$35/stall/month, or to purchase with unit please call for pricing.

GREG HOPLEY  
Executive Vice President  
480 655 3333 DIR  
602 999 5396 MOB  
greg.hopley@colliers.com

COLLIERS INTERNATIONAL  
8360 E. Raintree Dr., Suite 130  
Scottsdale, AZ 85260  
480 596 9000  
www.colliers.com/arizona

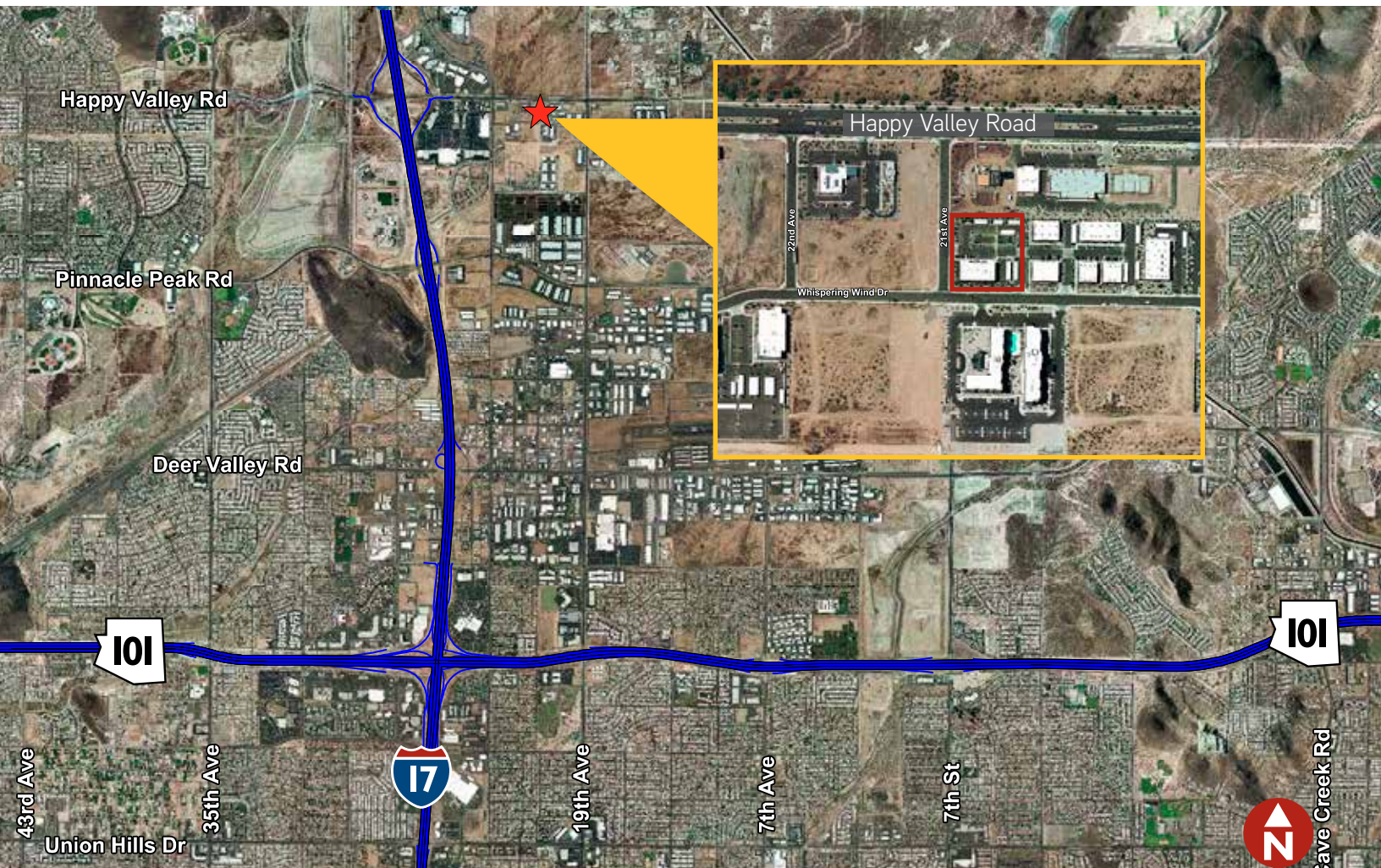
FOR SALE OR LEASE > OFFICE/MEDICAL CONDO SPACE

# Noterra Professional Plaza

2060 W. WHISPERING WIND DRIVE, PHOENIX, AZ 85085

## Property / Area Highlights

- > Available Space, ready to occupy
- > For Sale or Lease
- > Across from the new Marriott Courtyard and retail mall and restaurants within walking distance
- > Excellent location in Deer Valley



GREG HOPLEY  
Executive Vice President  
480 655 3333 DIR  
602 999 5396 MOB  
greg.hopley@colliers.com

COLLIERS INTERNATIONAL  
8360 E. Raintree Dr., Suite 130  
Scottsdale, AZ 85260  
480 596 9000  
www.colliers.com/arizona



FOR SALE OR LEASE > OFFICE/MEDICAL CONDO SPACE

# Noterra Professional Plaza

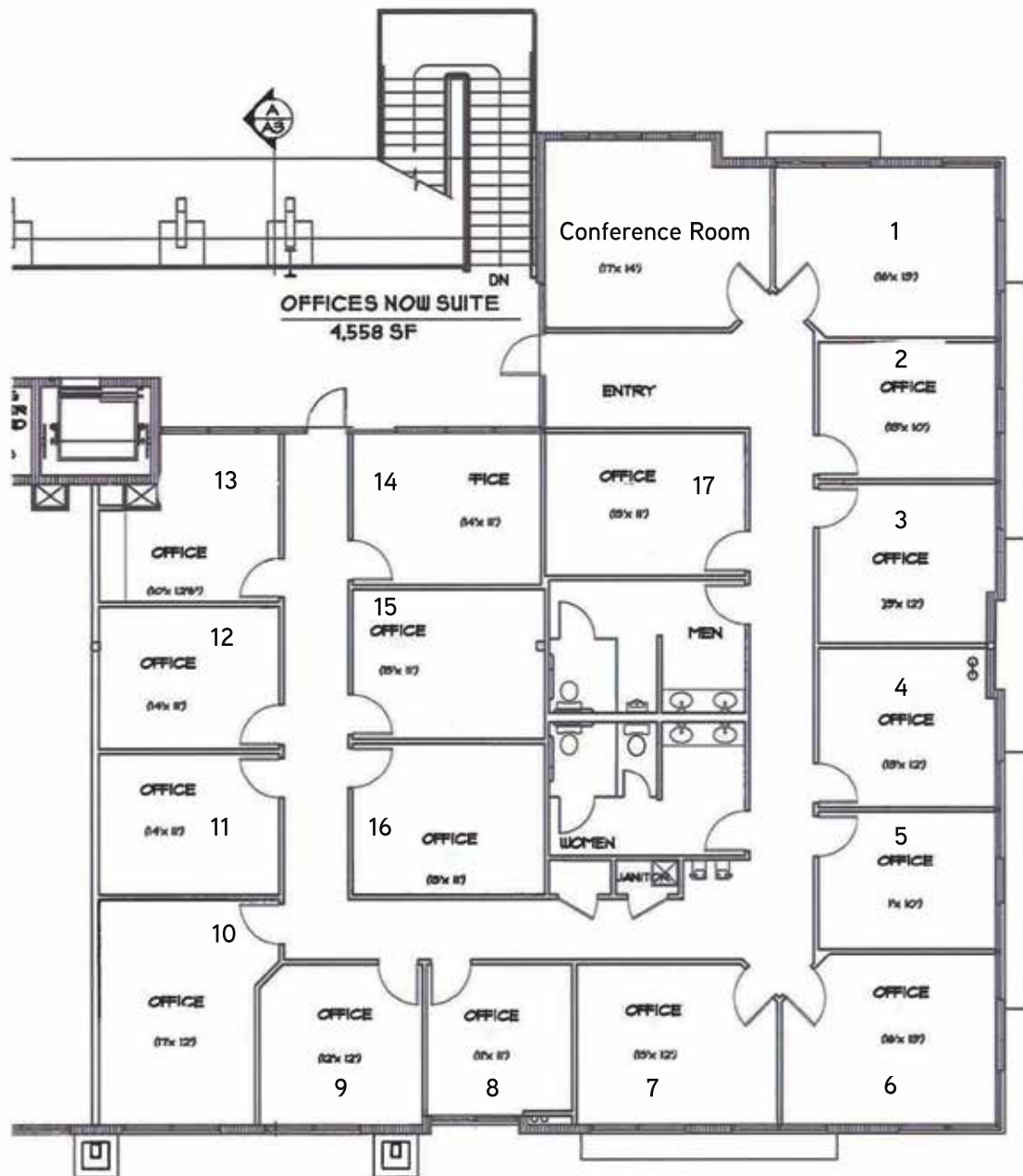
2060 W. WHISPERING WIND DRIVE, PHOENIX, AZ 85085

SUITE 260/264 - ±4,558 GSF  
(CURRENTLY AN EXECUTIVE SUITE OPERATION)

**NOW  
AVAILABLE!**

SUITE 260/264  
±4,558 GSF

**FOR SALE  
OR  
FOR LEASE**



GREG HOPLEY  
Executive Vice President  
480 655 3333 DIR  
602 999 5396 MOB  
greg.hopley@colliers.com

COLLIERS INTERNATIONAL  
8360 E. Raintree Dr., Suite 130  
Scottsdale, AZ 85260  
480 596 9000  
www.colliers.com/arizona

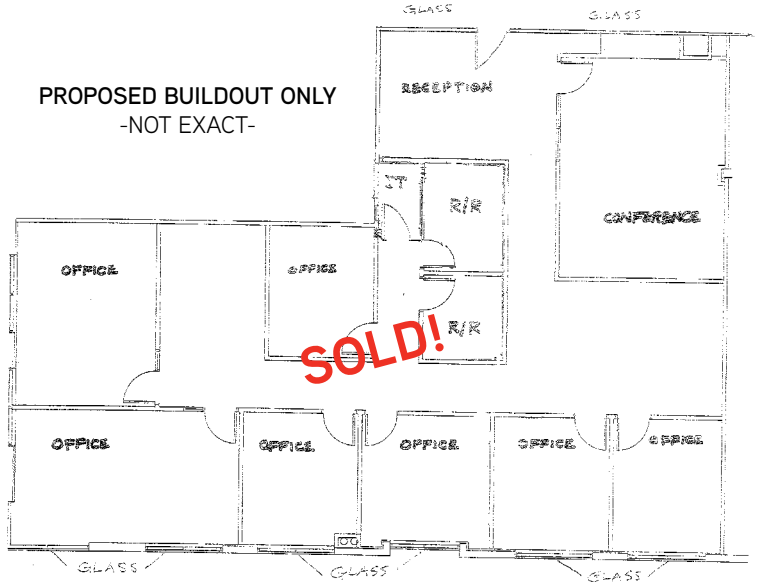
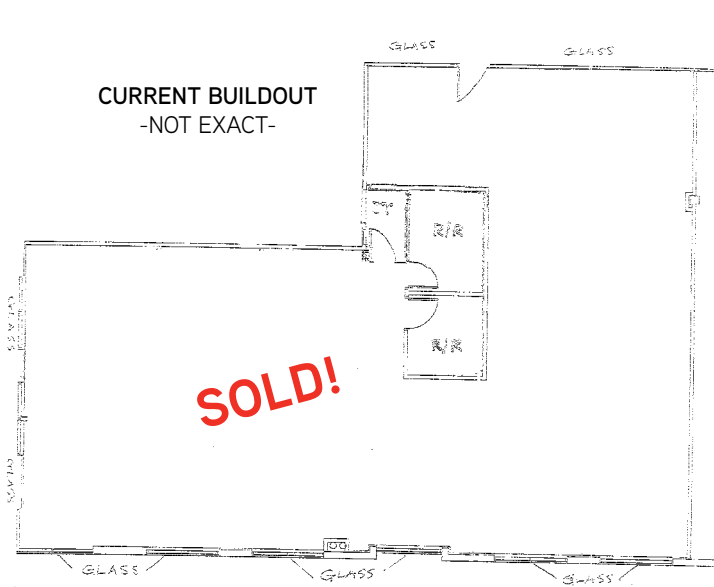


FOR SALE OR LEASE > OFFICE/MEDICAL CONDO SPACE

# Noterra Professional Plaza

2060 W. WHISPERING WIND DRIVE, PHOENIX, AZ 85085

SUITE 270 -- ±2,838 GSF **SOLD!**  
SALE OR LEASE



## FLOOR PLAN



GREG HOPLEY  
Executive Vice President  
480 655 3333 DIR  
602 999 5396 MOB  
greg.hopley@colliers.com

COLLIERS INTERNATIONAL  
8360 E. Raintree Dr., Suite 130  
Scottsdale, AZ 85260  
480 596 9000  
www.colliers.com/arizona

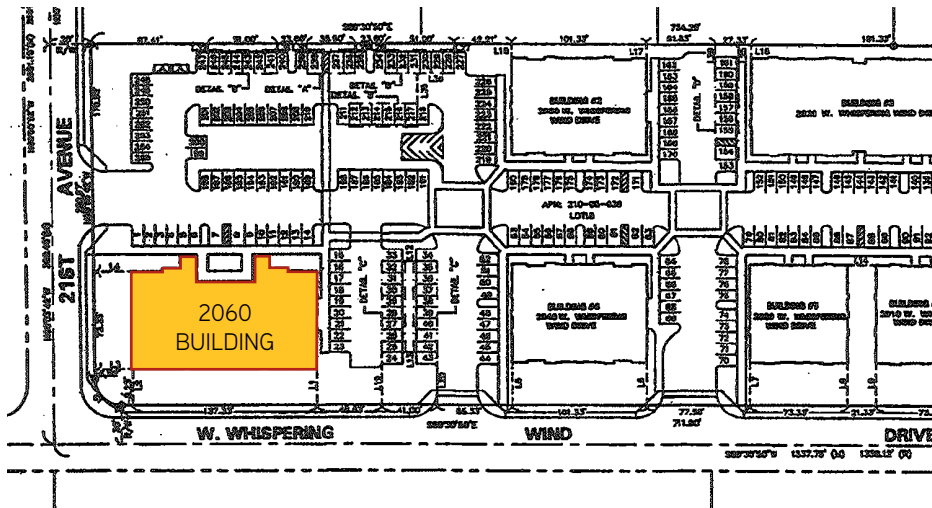


FOR SALE OR LEASE > OFFICE/MEDICAL CONDO SPACE

# Noterra Professional Plaza

2060 W. WHISPERING WIND DRIVE, PHOENIX, AZ 85085

## SITE PLAN



**NOW  
AVAILABLE!**  
SUITE 260/264  
±4,558 GSF

**FOR SALE  
OR  
FOR LEASE**



## Contact

GREG HOPLEY  
Executive Vice President  
480.655.3333  
Greg.Hopley@colliers.com

**Excellent Location!**  
Available for Sale or Lease.

COLLIERS INTERNATIONAL  
8360 E. Raintree Dr., Suite 130  
Scottsdale, AZ 85260  
480 596 9000  
[www.colliers.com/arizona](http://www.colliers.com/arizona)

This document/email has been prepared by Colliers International for advertising and general information only. Colliers International makes no guarantees, representations or warranties of any kind, expressed or implied, regarding the information including, but not limited to, warranties of content, accuracy and reliability. Any interested party should undertake their own inquiries as to the accuracy of the information. Colliers International excludes unequivocally all inferred or implied terms, conditions and warranties arising out of this document and excludes all liability for loss and damages arising there from. This publication is the copyrighted property of Colliers International and/or its licensor(s). © 2019. All rights reserved.

