

FOR SALE/LEASE

11,000 SF Office Building



14-16 EAST COMMERCE STREET, BRIDGETON, NEW JERSEY



Property Features

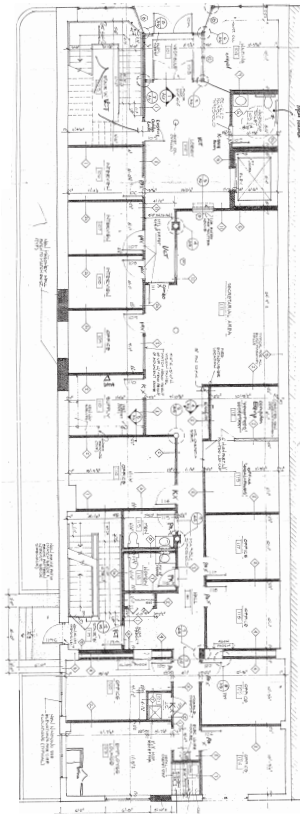
- › 11,000 SF, three-story office building
- › Lease from 3,000-11,000 SF
- › Features elevator and a partial basement
- › Great condition
- › Municipal parking lot adjacent to the building with plenty of free parking

Contact

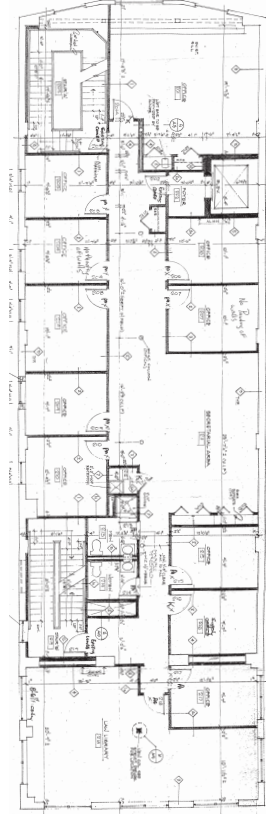
TONY DIDIO, SIOR
SENIOR VICE PRESIDENT
+1 609 820 5900
tony.didio@colliers.com

COLLIERS INTERNATIONAL
1317 Route 73
Suite 109
Mount Laurel, NJ 08054
+1 856 234 9300
www.colliers.com/mountlaurel

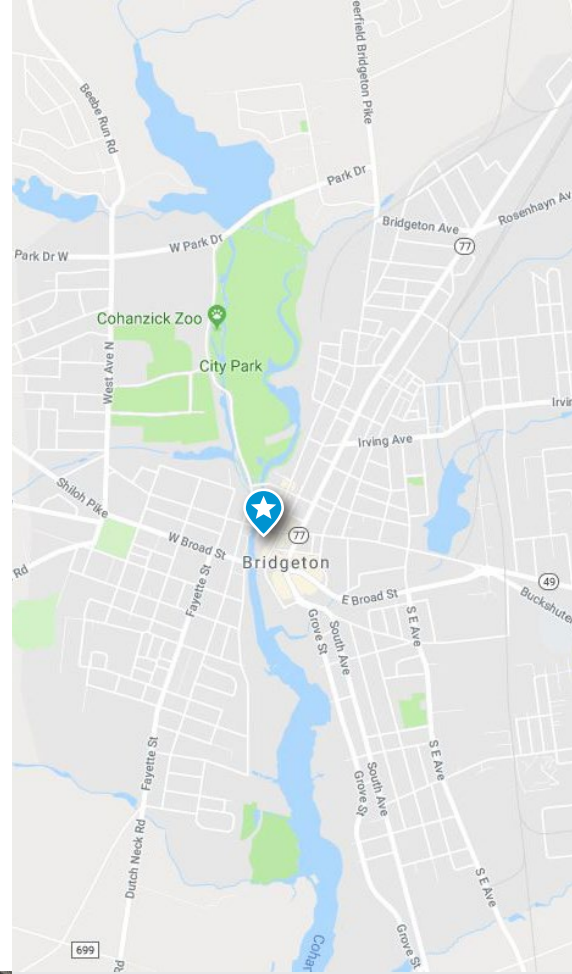
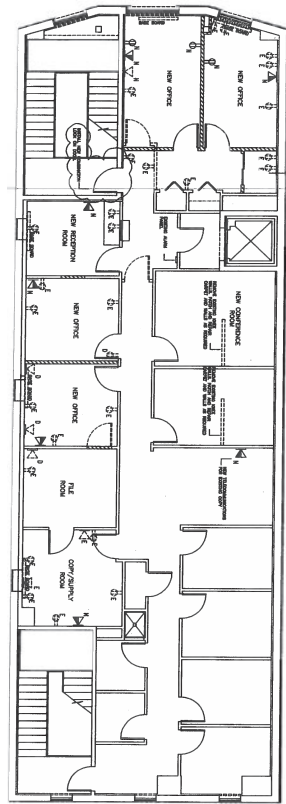
FIRST FLOOR



SECOND FLOOR



THIRD FLOOR

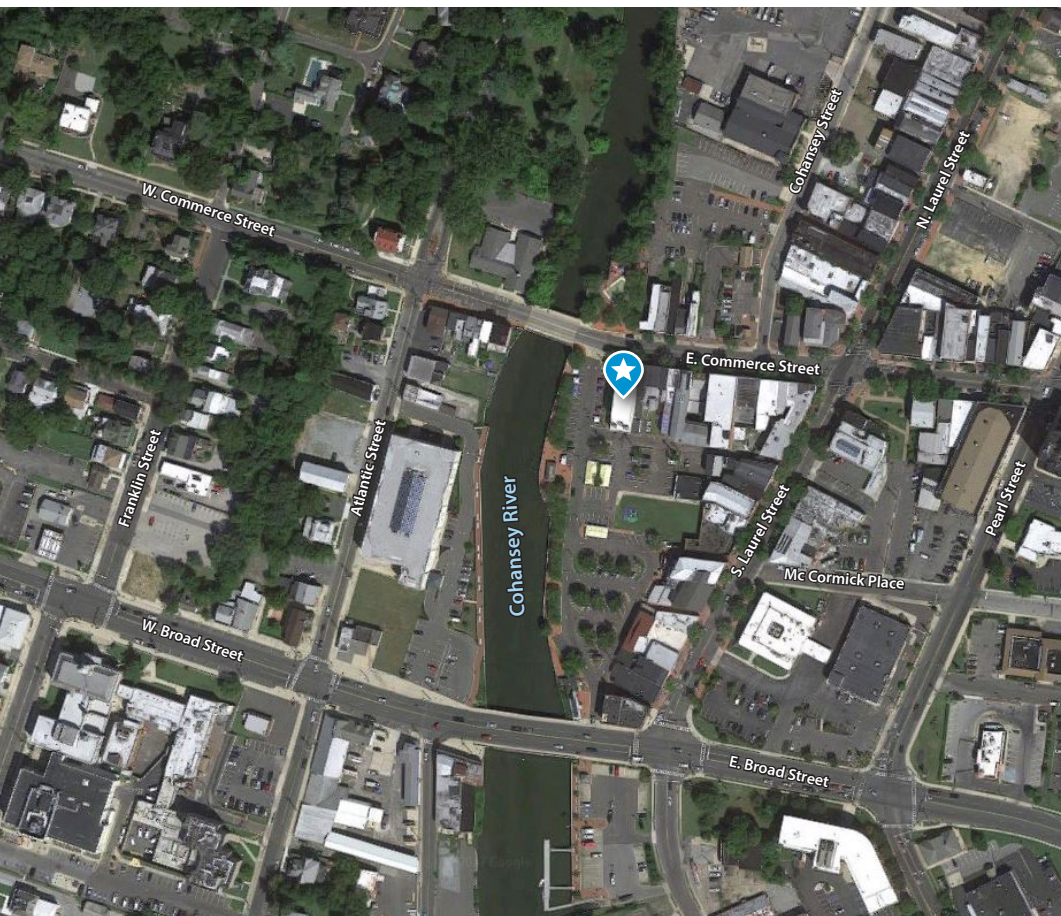


Contact

TONY DIDIO, SIOR
SENIOR VICE PRESIDENT
+1 609 820 5900
tony.didio@colliers.com



COLLIERS INTERNATIONAL
1317 Route 73
Suite 109
Mount Laurel, NJ 08054
+1 856 234 9300



@ColliersSNJ



ColliersSNJ



colliers.com/mountlaurel

The foregoing information was furnished to us by sources which we deem to be reliable, but no warranty or representation is made as to the accuracy thereof. Subject to correction of errors, omissions, change of price, prior sale or withdrawal from market without notice. The aerial image is intended to provide a general outline of the subject property. It is not a survey nor should it be relied upon for purposes of determining property lines or boundaries.