

FOR LEASE > RETAIL

# WOODWARD SIDE PLAZA

30252 – 30278 WOODWARD AVENUE | ROYAL OAK, MICHIGAN



**PRIME LOCATION WITH TRAFFIC COUNTS OF 71,000**

## > PROPERTY HIGHLIGHTS

- 2,000 SF Former Capriotti's Sandwich Shop
- 2008 Construction with 72 Parking Spots
- Half of a Mile From William Beaumont Hospital
- Join AT&T, America's Best Contacts & Eyeglasses, uBreakiFix and Pei Wei

## > DEMOGRAPHICS

	1 MILE	2 MILE	3 MILE	5 MILE
POPULATION	15,264	62,513	137,675	308,932
AVG. INCOME	\$91,794	\$95,008	\$99,675	\$98,281
HOUSEHOLDS	7,525	29,570	63,995	137,507

**COLLIERS INTERNATIONAL**

2 Corporate Drive | Suite 300

Southfield, Michigan 48076

**For More Information Call:**

**BRIAN WHITFIELD**

PHONE 248 540 1000 EXT 1646

EMAIL [brian.whitfield@colliers.com](mailto:brian.whitfield@colliers.com)



**LOU FRANGO**

PHONE 248 540 1000 EXT 1678

EMAIL [lou.frango@colliers.com](mailto:lou.frango@colliers.com)



[colliers.com/detroit](http://colliers.com/detroit)



FOR LEASE > RETAIL

# WOODWARD SIDE PLAZA

30252 – 30278 WOODWARD AVENUE | ROYAL OAK, MICHIGAN



## > PLAZA SITE PLAN



**BRIAN WHITFIELD**

PHONE 248 540 1000 EXT 1646

EMAIL [brian.whitfield@colliers.com](mailto:brian.whitfield@colliers.com)



**LOU FRANGO**

PHONE 248 540 1000 EXT 1678

EMAIL [lou.frango@colliers.com](mailto:lou.frango@colliers.com)

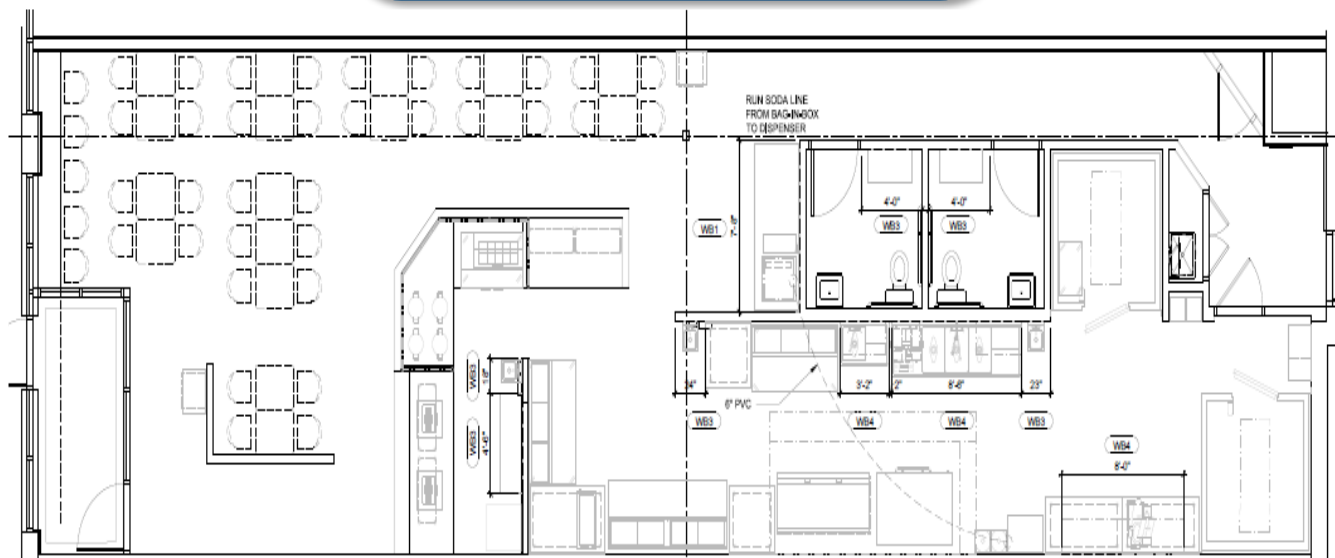
FOR LEASE > RETAIL

# WOODWARD SIDE PLAZA

30252 – 30278 WOODWARD AVENUE | ROYAL OAK, MICHIGAN



## > CAPRIOTTI'S INTERIOR PHOTO & SITE PLAN



**BRIAN WHITFIELD**

PHONE 248 540 1000 EXT 1646

EMAIL [brian.whitfield@colliers.com](mailto:brian.whitfield@colliers.com)



**LOU FRANGO**

PHONE 248 540 1000 EXT 1678

EMAIL [lou.frango@colliers.com](mailto:lou.frango@colliers.com)



FOR LEASE > RETAIL

# WOODWARDSIDE PLAZA

30252 – 30278 WOODWARD AVENUE | ROYAL OAK, MICHIGAN



## > PROPERTY PHOTOS



**BRIAN WHITFIELD**

PHONE 248 540 1000 EXT 1646

EMAIL [brian.whitfield@colliers.com](mailto:brian.whitfield@colliers.com)



**LOU FRANGO**

PHONE 248 540 1000 EXT 1678

EMAIL [lou.frango@colliers.com](mailto:lou.frango@colliers.com)



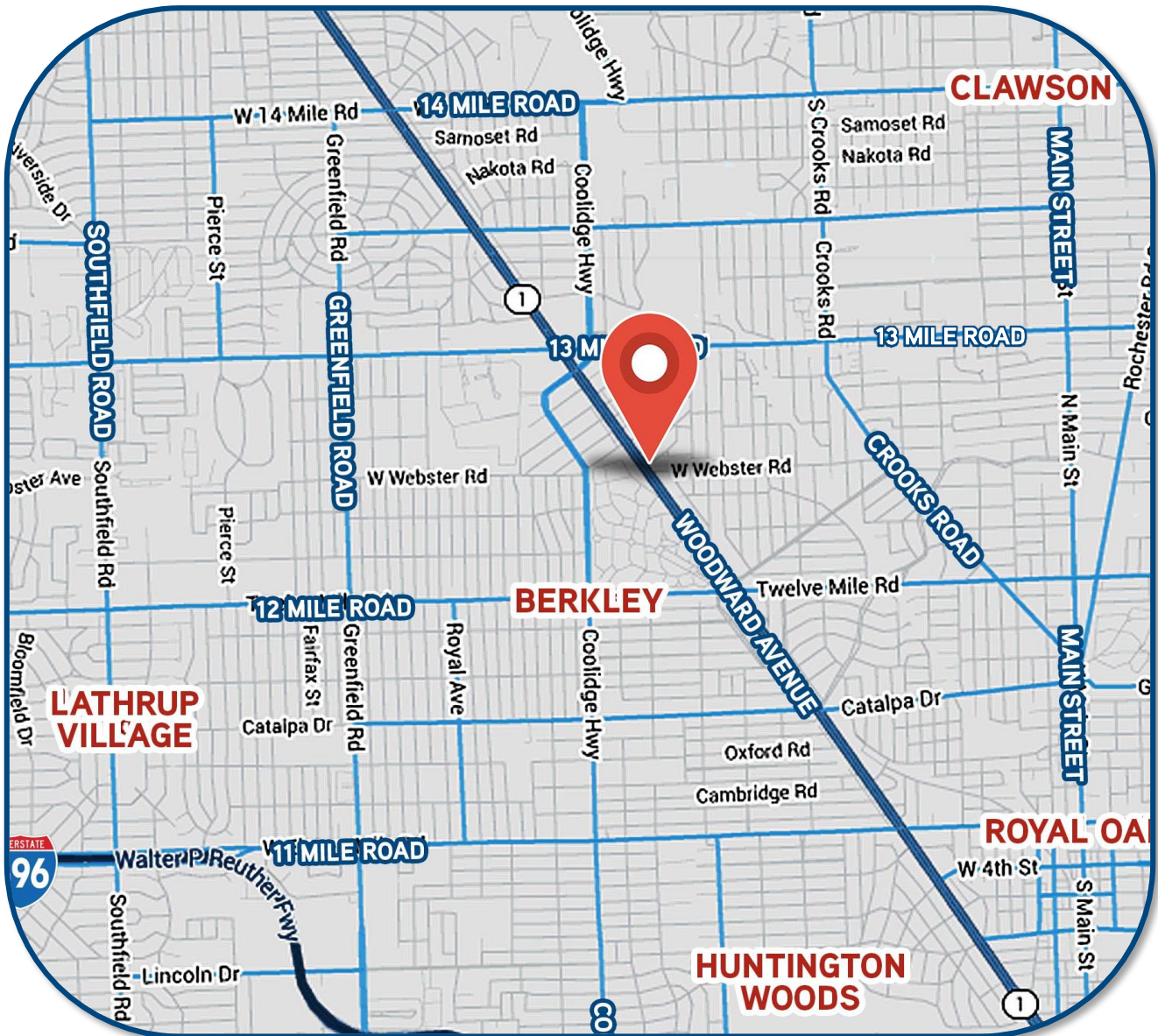
FOR LEASE > RETAIL

# WOODWARDSIDE PLAZA

30252 – 30278 WOODWARD AVENUE | ROYAL OAK, MICHIGAN



## > LOCATION MAP



**BRIAN WHITFIELD**

PHONE 248 540 1000 EXT 1646

EMAIL [brian.whitfield@colliers.com](mailto:brian.whitfield@colliers.com)



**LOU FRANGO**

PHONE 248 540 1000 EXT 1678

EMAIL [lou.frango@colliers.com](mailto:lou.frango@colliers.com)



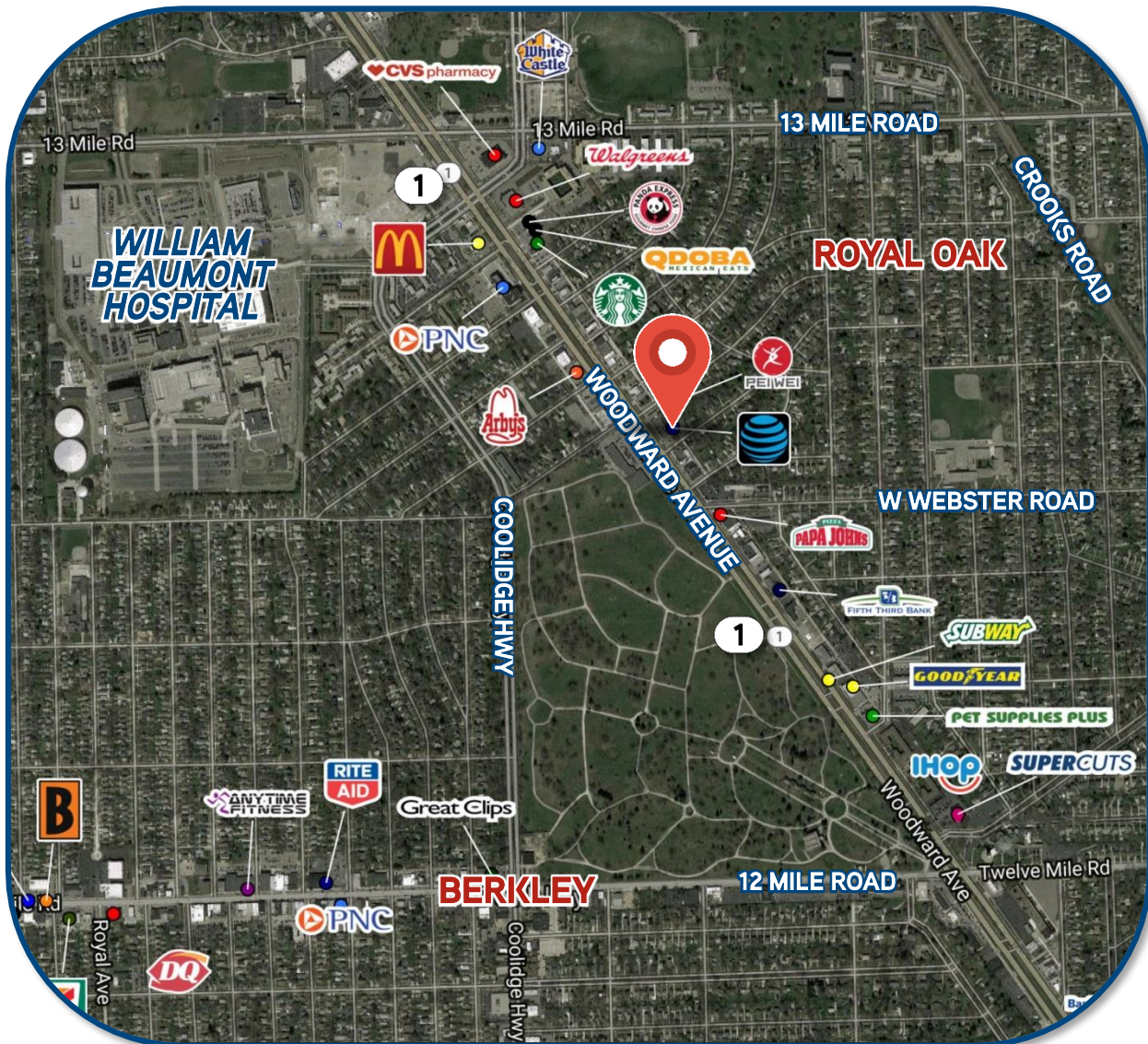
FOR LEASE > RETAIL

# WOODWARDSIDE PLAZA

30252 – 30278 WOODWARD AVENUE | ROYAL OAK, MICHIGAN



## > AREA MERCHANT MAP



**BRIAN WHITFIELD**

PHONE 248 540 1000 EXT 1646

EMAIL [brian.whitfield@colliers.com](mailto:brian.whitfield@colliers.com)



**LOU FRANGO**

PHONE 248 540 1000 EXT 1678

EMAIL [lou.frango@colliers.com](mailto:lou.frango@colliers.com)

# SUMMARY PROFILE

2000-2010 Census, 2017 Estimates with 2022 Projections

Calculated using Weighted Block Centroid from Block Groups



Lat/Lon: 42.5122/-83.1798

RS1

30252-30278 Woodward Ave

Royal Oak, MI 48073

1 mi radius 2 mi radius 3 mi radius 5 mi radius

POPULATION	2017 Estimated Population	15,264	62,513	137,675	308,932
	2022 Projected Population	15,458	63,499	140,037	315,254
	2010 Census Population	14,271	59,831	131,325	296,582
	2000 Census Population	15,375	63,340	137,250	311,625
	Projected Annual Growth 2017 to 2022	0.3%	0.3%	0.3%	0.4%
	Historical Annual Growth 2000 to 2017	-	-0.1%	-	-0.1%
	2017 Median Age	39.7	38.7	39.3	40.2
HOUSEHOLDS	2017 Estimated Households	7,525	29,570	63,995	137,507
	2022 Projected Households	7,729	30,460	66,034	142,387
	2010 Census Households	6,850	27,690	59,883	129,635
	2000 Census Households	7,212	28,829	62,108	133,793
	Projected Annual Growth 2017 to 2022	0.5%	0.6%	0.6%	0.7%
	Historical Annual Growth 2000 to 2017	0.3%	0.2%	0.2%	0.2%
RACE AND ETHNICITY	2017 Estimated White	86.5%	84.3%	77.6%	67.9%
	2017 Estimated Black or African American	7.0%	9.6%	15.2%	22.8%
	2017 Estimated Asian or Pacific Islander	3.5%	3.3%	4.3%	6.1%
	2017 Estimated American Indian or Native Alaskan	0.3%	0.3%	0.2%	0.2%
	2017 Estimated Other Races	2.6%	2.5%	2.7%	3.0%
	2017 Estimated Hispanic	3.1%	2.7%	2.6%	2.6%
INCOME	2017 Estimated Average Household Income	\$91,794	\$95,008	\$99,675	\$98,281
	2017 Estimated Median Household Income	\$73,689	\$77,324	\$78,035	\$77,299
	2017 Estimated Per Capita Income	\$45,340	\$45,050	\$46,466	\$43,902
EDUCATION (AGE 25+)	2017 Estimated Elementary (Grade Level 0 to 8)	1.1%	1.1%	1.1%	2.2%
	2017 Estimated Some High School (Grade Level 9 to 11)	2.4%	2.8%	2.8%	3.7%
	2017 Estimated High School Graduate	15.6%	16.1%	16.2%	18.5%
	2017 Estimated Some College	22.8%	21.3%	19.8%	20.3%
	2017 Estimated Associates Degree Only	8.3%	7.6%	7.2%	7.2%
	2017 Estimated Bachelors Degree Only	29.2%	29.9%	30.4%	27.2%
	2017 Estimated Graduate Degree	20.6%	21.2%	22.5%	21.0%
BUSINESS	2017 Estimated Total Businesses	1,104	3,026	8,373	21,428
	2017 Estimated Total Employees	14,711	31,848	79,403	238,273
	2017 Estimated Employee Population per Business	13.3	10.5	9.5	11.1
	2017 Estimated Residential Population per Business	13.8	20.7	16.4	14.4

This report was produced using data from private and government sources deemed to be reliable. The information herein is provided without representation or warranty.