

FOR SALE > VACANT LAND

0.17 ACRES AVAILABLE

6314 ARTHUR STREET | WESTLAND, MICHIGAN



"0.17 ACRES COMMERCIAL LOT FOR SALE"

> PROPERTY HIGHLIGHTS

- Zoned: C-3 General Commercial
- Traffic Counts of 45,116 on N. Wayne Road and Hunter Avenue
- Area Retailers Include: CVS, O'Reilly Auto Parts, Buffalo Wild Wings and Jet's Pizza

DEMOGRAPHICS	Category	1 Mile	3 Mile	5 Mile
	Population	12,697	105,898	261,591
	Average Income	\$48,985	\$61,322	\$64,633
	Households	6,472	46,304	109,145

COLLIERS INTERNATIONAL

2 Corporate Drive | Suite 300
Southfield, Michigan 48076

For More Information Call:

LOU FRANGO

PHONE 248 540 1000 EXT 1678

EMAIL lou.frango@colliers.com



colliers.com/detroit



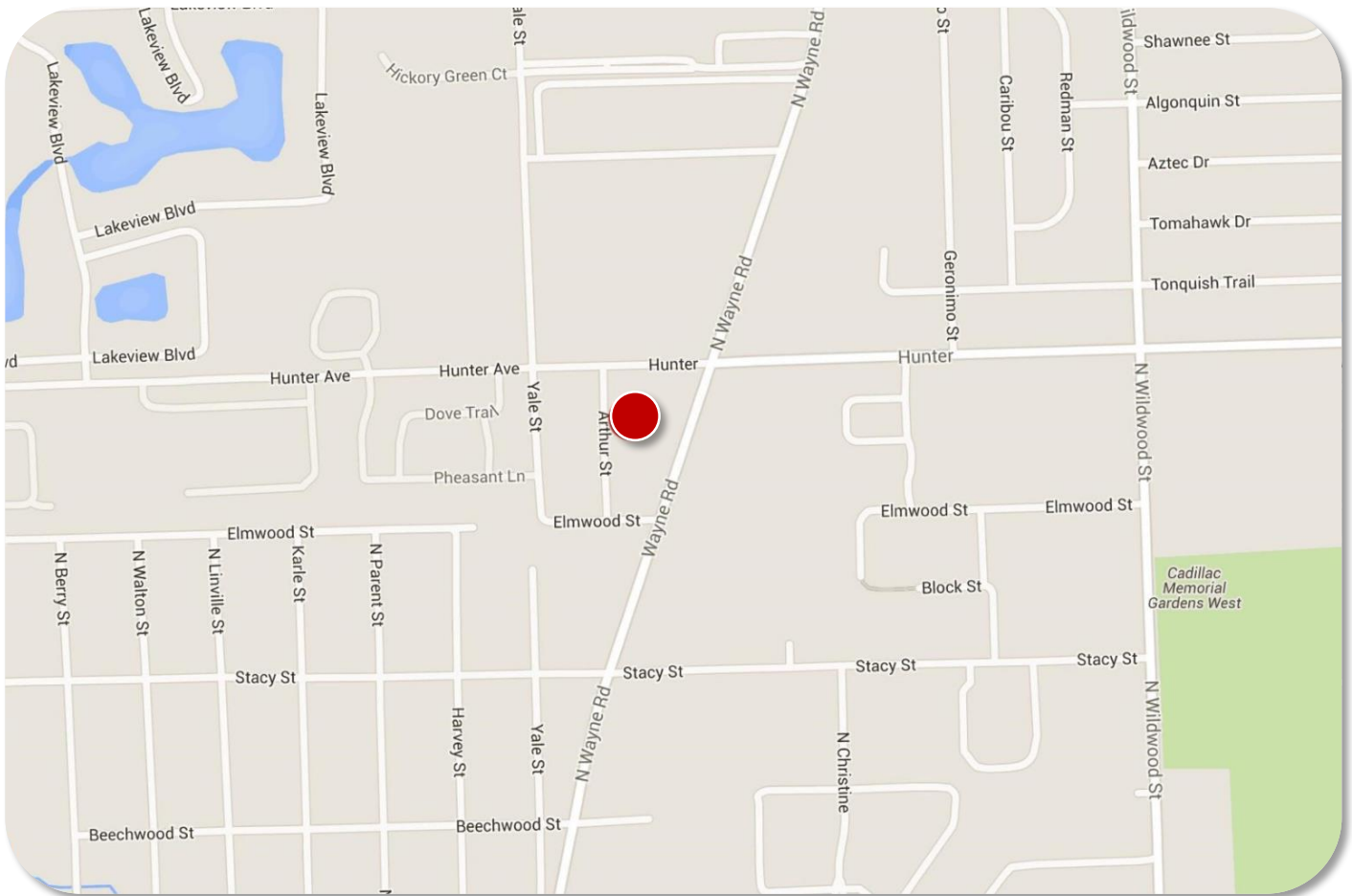
FOR SALE > VACANT LAND

0.17 ACRES AVAILABLE

6314 ARTHUR STREET | WESTLAND, MICHIGAN



> LOCATION MAP



LOU FRANGO

PHONE 248 540 1000 EXT 1678

EMAIL lou.frango@colliers.com



COLLIERS INTERNATIONAL

2 Corporate Dr. | Suite 300

Southfield, Michigan 48076

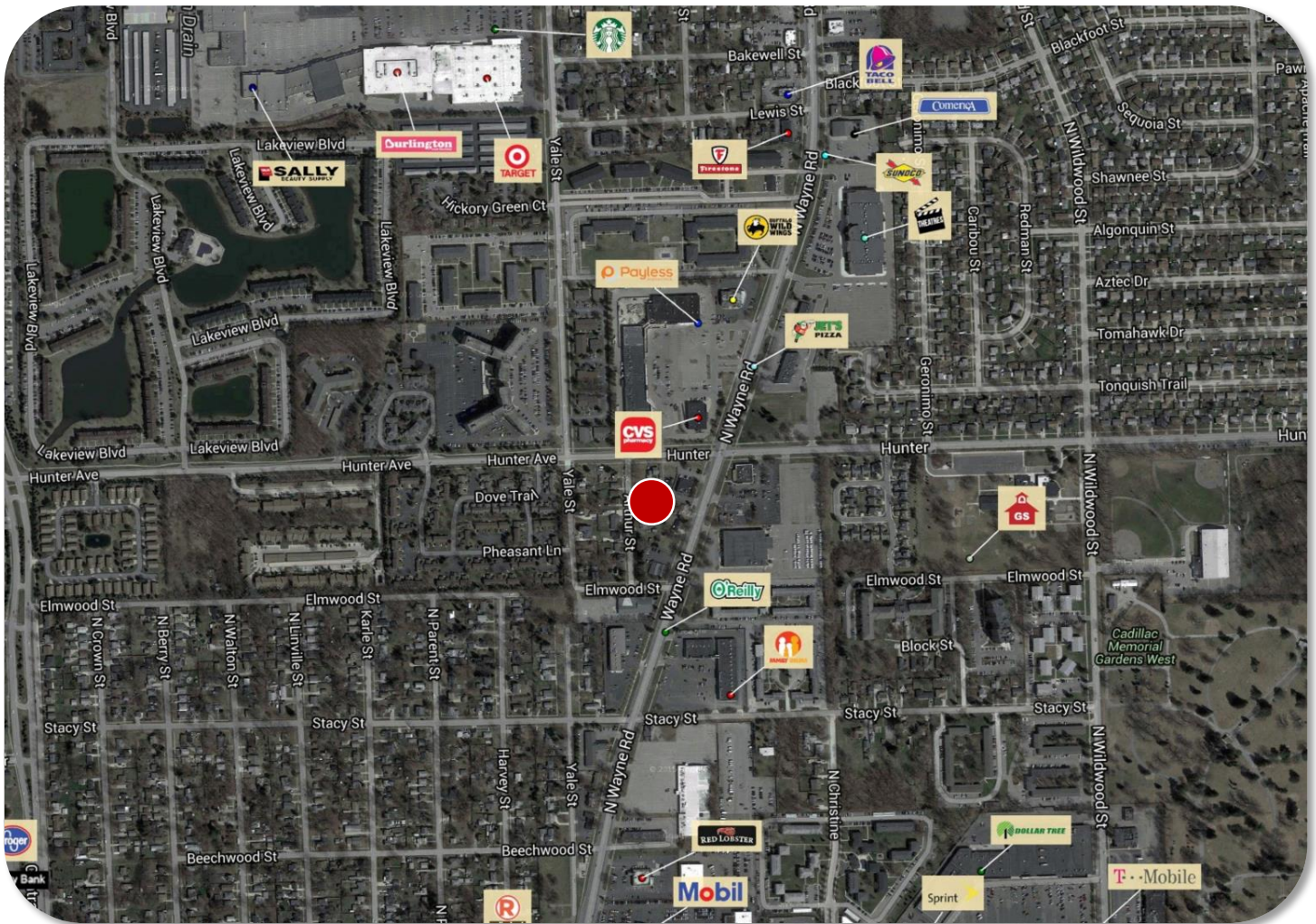
FOR SALE > VACANT LAND

0.17 ACRES AVAILABLE

6314 ARTHUR STREET | WESTLAND, MICHIGAN



> MERCHANT MAP



Colliers International has prepared this document for advertising or general information only. Information contained herein has been obtained from sources deemed reliable. We have no reason to doubt its accuracy but we cannot guarantee it. All properties subject to change or withdrawal without notice.

LOU FRANGO
PHONE 248 540 1000 EXT 1678
EMAIL lou.frango@colliers.com



COLLIERS INTERNATIONAL
2 Corporate Dr. | Suite 300
Southfield, Michigan 48076

SUMMARY PROFILE

2000-2010 Census, 2015 Estimates with 2020 Projections

Calculated using Weighted Block Centroid from Block Groups



Lat/Lon: 42.3310/-83.3878

RS1

6314 Arthur St

Westland, MI 48185-2164

1 mi radius

3 mi radius

5 mi radius

POPULATION	2015 Estimated Population	12,697	105,898	261,591
	2020 Projected Population	12,300	102,072	252,831
	2010 Census Population	13,347	112,636	277,970
	2000 Census Population	14,059	116,479	286,669
	Projected Annual Growth 2015 to 2020	-0.6%	-0.7%	-0.7%
	Historical Annual Growth 2000 to 2015	-0.6%	-0.6%	-0.6%
	2015 Median Age	38.7	38.2	38
HOUSEHOLDS	2015 Estimated Households	6,472	46,304	109,145
	2020 Projected Households	6,382	45,536	107,625
	2010 Census Households	6,590	47,812	112,709
	2000 Census Households	6,911	48,655	114,047
	Projected Annual Growth 2015 to 2020	-0.3%	-0.3%	-0.3%
	Historical Annual Growth 2000 to 2015	-0.4%	-0.3%	-0.3%
RACE AND ETHNICITY	2015 Estimated White	70.8%	78.9%	76.0%
	2015 Estimated Black or African American	21.9%	14.0%	15.8%
	2015 Estimated Asian or Pacific Islander	2.9%	3.7%	4.7%
	2015 Estimated American Indian or Native Alaskan	0.4%	0.4%	0.3%
	2015 Estimated Other Races	4.0%	3.0%	3.3%
	2015 Estimated Hispanic	4.1%	3.7%	3.6%
INCOME	2015 Estimated Average Household Income	\$48,985	\$61,322	\$64,633
	2015 Estimated Median Household Income	\$38,333	\$51,104	\$55,231
	2015 Estimated Per Capita Income	\$25,045	\$26,866	\$27,034
EDUCATION (AGE 25+)	2015 Estimated Elementary (Grade Level 0 to 8)	2.1%	2.7%	3.0%
	2015 Estimated Some High School (Grade Level 9 to 11)	9.6%	7.2%	6.8%
	2015 Estimated High School Graduate	37.1%	33.3%	29.8%
	2015 Estimated Some College	26.9%	26.1%	25.1%
	2015 Estimated Associates Degree Only	8.5%	9.6%	9.3%
	2015 Estimated Bachelors Degree Only	11.8%	14.7%	17.0%
	2015 Estimated Graduate Degree	4.0%	6.5%	8.9%
BUSINESS	2015 Estimated Total Businesses	583	3,654	10,397
	2015 Estimated Total Employees	6,567	40,832	130,931
	2015 Estimated Employee Population per Business	11.3	11.2	12.6
	2015 Estimated Residential Population per Business	21.8	29.0	25.2

This report was produced using data from private and government sources deemed to be reliable. The information herein is provided without representation or warranty.