

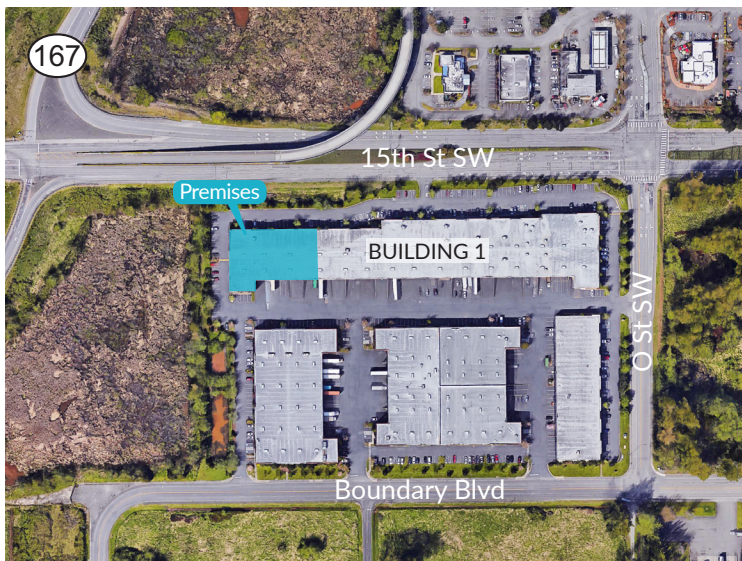
# FOR LEASE

## Auburn 167 Industrial Center - 1604 15th Street SW, Auburn WA

25,465 SQUARE FEET AVAILABLE



### Building Highlights



- 25,465 SF total available
- 3,825 SF office
- 7 dock-high doors
- 3 grade-level doors
- 24' clear height
- High identity building park with exposure along 15th Street SW
- Located directly across from The Outlet Collection
- Immediate access to SR 167
- Available April 1, 2019

Owned by

INDUSTRIAL  
PROPERTY TRUST



BLACK CREEK GROUP

industrialpropertytrust.com • blackcreekgroup.com

Leased by

BILL CONDON  
+1 206 624 7400  
bill.condon@colliers.com

BOB SANTUCCI  
+1 206 287 0213  
bob.santucci@colliers.com

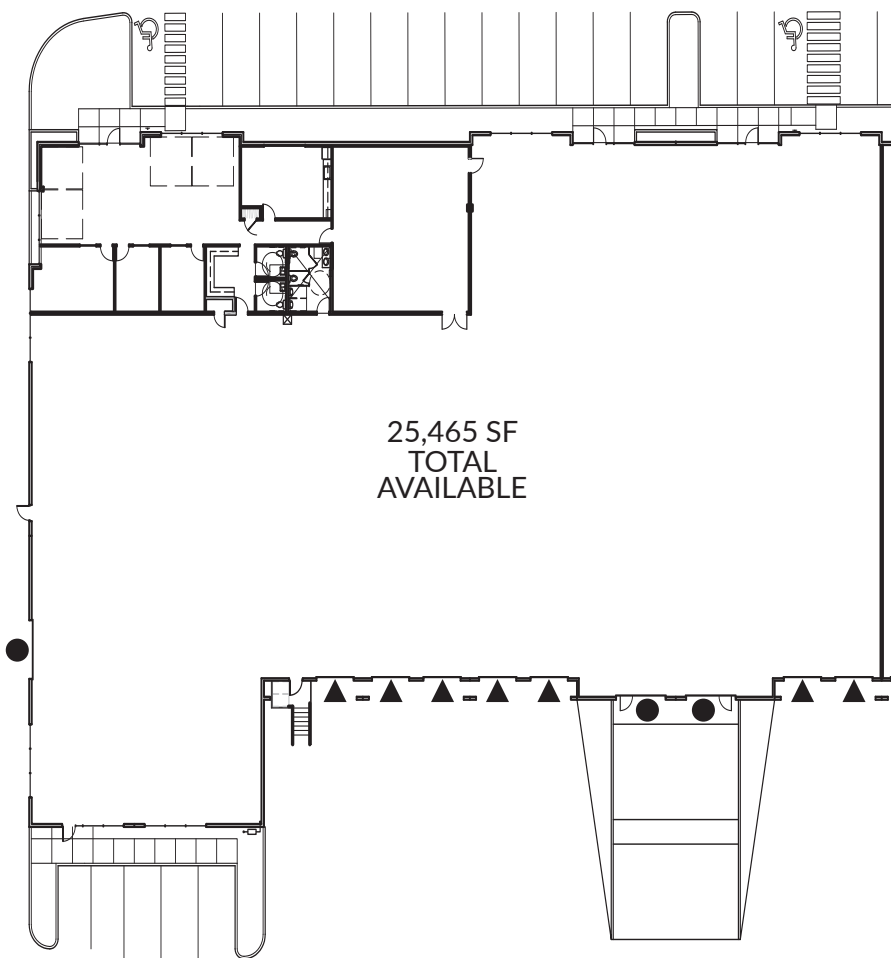
MATT MCGREGOR  
+1 206 624 7401  
matt.mcgregor@colliers.com



# Auburn 167 Industrial Center - 1604 15th Street SW, Auburn WA

25,465 SQUARE FEET AVAILABLE

Floor Plan

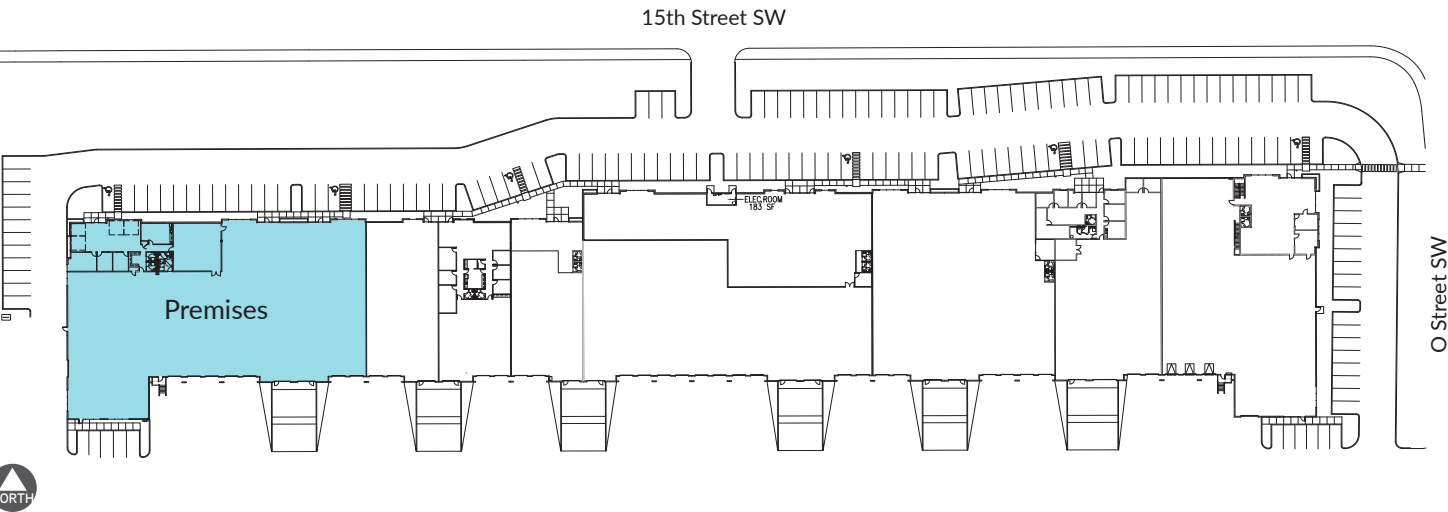


BUILDING 1, SUITE 114	
WAREHOUSE	21,640 SF
OFFICE	3,825 SF
TOTAL AVAILABLE	25,465 SF

LEGEND

- ▲ Dock-high door
- Grade-level door

Site Plan



This document has been prepared by Colliers International for advertising and general information only. Colliers International makes no guarantees, representations or warranties of any kind, express or implied, regarding the information including, but not limited to, warranties of content, accuracy and reliability. Any interested party should undertake their own inquiries as to the accuracy of the information. Colliers International excludes unequivocally all inferred or implied terms, conditions and warranties arising out of this document and excludes all liability for loss and damages arising there from. Colliers International is a worldwide affiliation of independently owned and operated companies. This publication is the copyrighted property of Colliers International and/or its licensor(s). © 2018. All rights reserved.