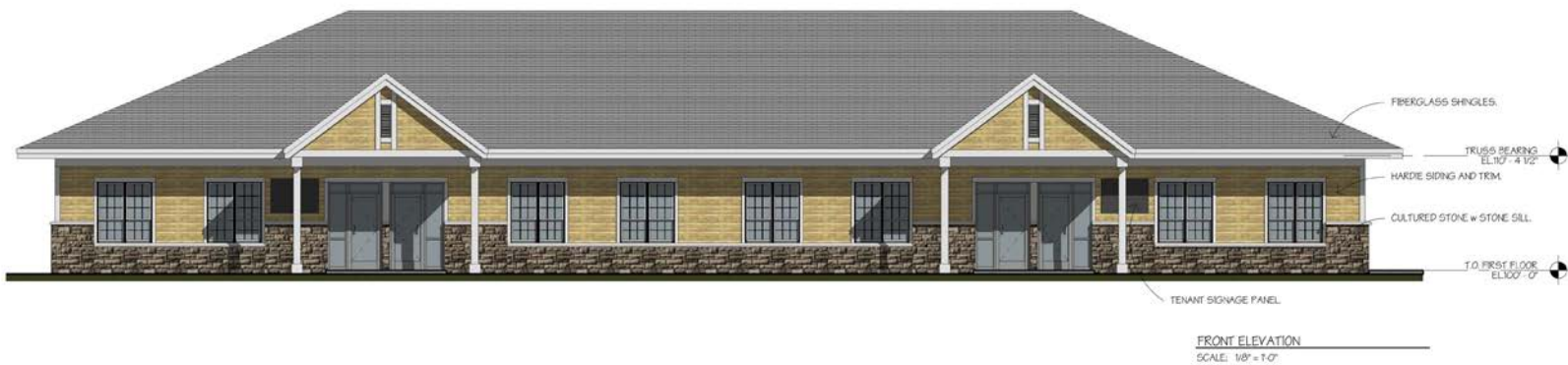


FOR SALE > OFFICE/MEDICAL

# 2321 124th Court NE

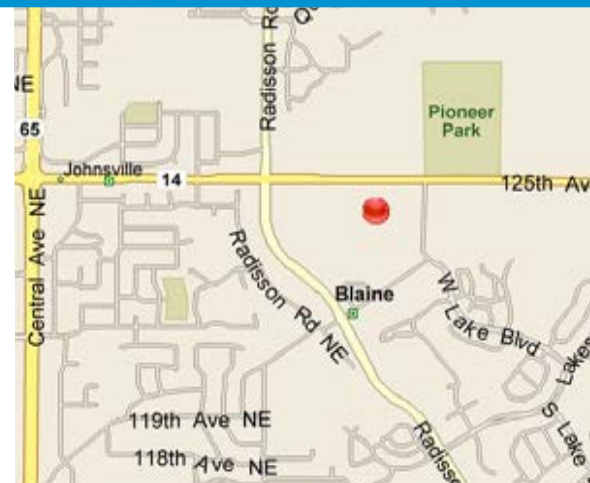
BLAINE, MINNESOTA



## New Office/Medical Development

### Building Amenities

- > Located 1 block East of the South East Quadrant of County Road 14 (Main Street) and County Road 52 (Radisson Road)
- > 1.51 acre site (65,775 total square feet)
- > 5,600 - 12,000 square feet
- > Zoned B2 Community Commercial
- > Build-to-suit opportunity
- > Water, sewer, electrical and gas at site
- > Access to I-35W via County Road 14 (Main Street) and Highway 10 via Central Avenue
- > Contact agent for construction package



COLLIERS INTERNATIONAL  
5985 Rice Creek Parkway, Suite 105  
Shoreview, MN 55126

[www.colliers.com](http://www.colliers.com)

JUSTIN RATH  
952 897 7803 direct  
612 720 6957 mobile  
[justin.rath@colliers.com](mailto:justin.rath@colliers.com)

JAY CHMIELESKI  
952 897 7801 direct  
612 275 3772 mobile  
[jay.c@colliers.com](mailto:jay.c@colliers.com)



## Site Information

Property Address	2321 124th Court NE, Blaine, Minnesota
PID	09.31.23.12.0008
Land Area	1.51 Acres (65,775 total square feet)
Zoning	B2 - Community Commercial

DEMOGRAPHICS:	1 Mile	3 Miles	5 Miles
Population	3,691	39,559	111,764
Median HH Income	\$91,737	\$85,363	\$79,616
Average HH Income	\$106,836	\$98,403	\$90,627

### DEVELOPMENT:

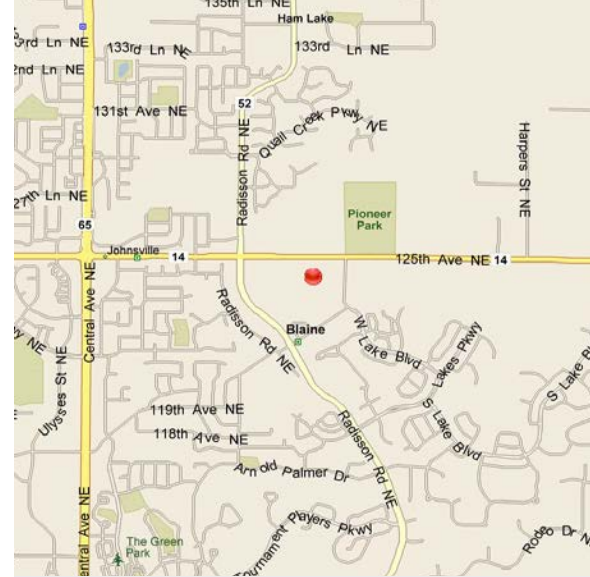
- > Phase I Completed in 2006
- > Phase II Completed in 2002
- > Alta Survey Completed in 2006

### RAW LAND SALE PRICE:

\$445,000

### COMMENTS:

- > Located one block east of the Southeast Quadrant of County Road 14 (Main Street) and County Road 52 (Radisson Road).
- > Water, sewer, electrical and gas at site.
- > Access to I-35W via County Road 14 (Main Street) and Highway 10 via Central Avenue.



## Contact Us

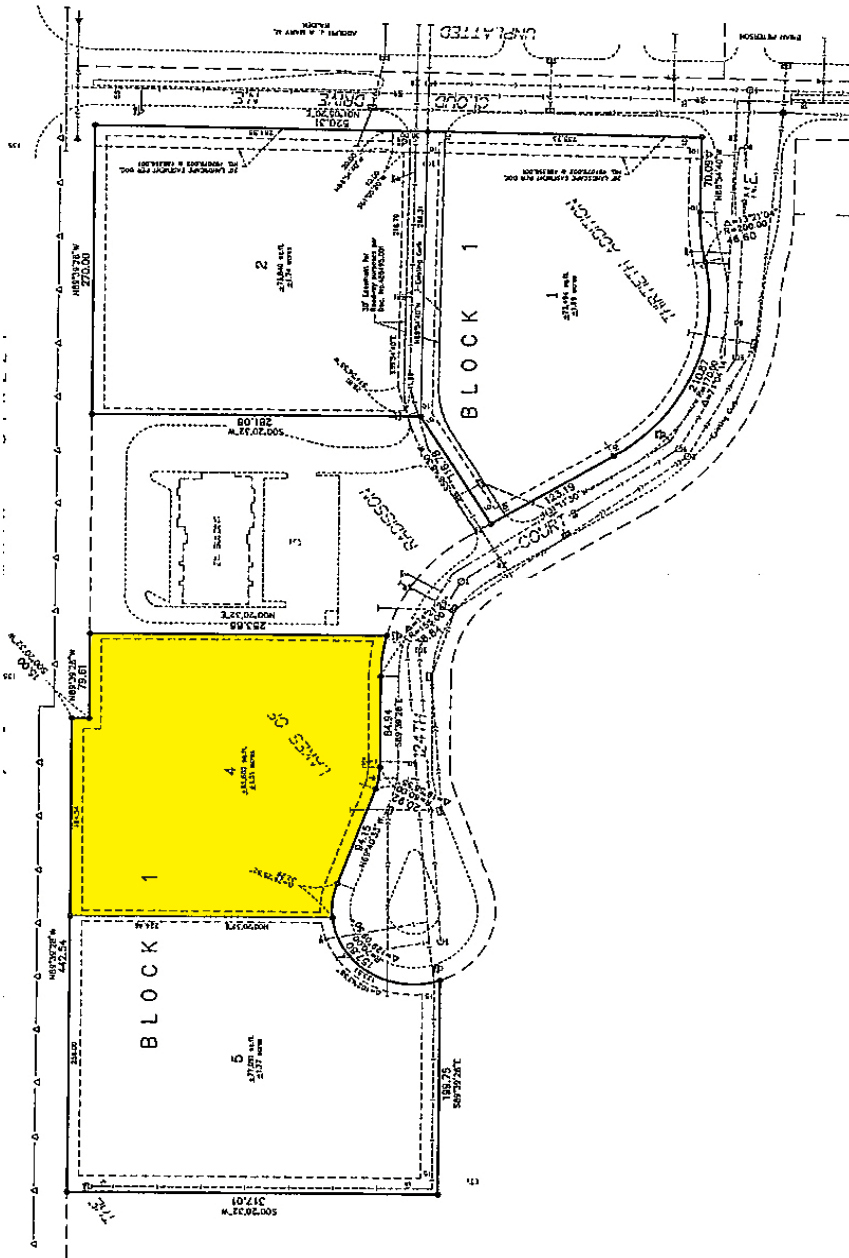
JUSTIN RATH  
952 897 7803 direct  
612 720 6957 mobile  
Shoreview, MN  
[mike.brass@colliers.com](mailto:mike.brass@colliers.com)

JAY CHMIELESKI  
952 897 7801 direct  
952 275 3772 mobile  
Shoreview, MN  
[jay.c@colliers.com](mailto:jay.c@colliers.com)

COLLIERS INTERNATIONAL  
5985 Rice Creek Parkway, Suite 105  
Shoreview, MN 55126  
[www.colliers.com](http://www.colliers.com)



# 2321 124th Court NE > Survey Map



## Contact Us

JUSTIN RATH  
952 897 7803 direct  
612 275 3772 mobile  
SHOREVIEW, MN  
[justin.rath@colliers.com](mailto:justin.rath@colliers.com)

JAY CHMIELESKI  
952 837 7801 direct  
612 275 3772 mobile  
SHOREVIEW, MN  
[jay.c@colliers.com](mailto:jay.c@colliers.com)

COLLIERS INTERNATIONAL  
5985 Rice Creek Parkway, Suite 105  
Shoreview, MN 55126  
[www.colliers.com](http://www.colliers.com)

