



PEACHTREE CENTER



AN ICON
REBORN



BE CENTERED CONNECT FASTER

PROJECT HIGHLIGHTS

- 1.5M SF transit-oriented, mixed use development
- Large blocks on upper floors: Harris & South Tower
- Building naming and signage opportunity
- Move-in ready suites
- Quick access to I-75/85 and Hartsfield Jackson International Airport
- Generous parking
- Dedicated MARTA station
- Unprecedented walkability with 95 walk score
- Direct connectivity to over 4,000 hotel rooms
- Over 50 restaurant and retail shops on-site
- Minutes from Atlanta's thriving residential neighborhoods



WORK • DINE • SHOP • CONNECT

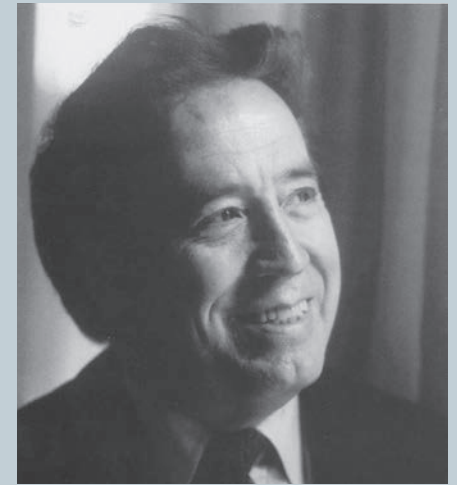
A BOLD NEW VISION

An infusion of light and an incorporation of technology. Architectural enhancements and infrastructure improvements. A stunning rebirth that pays tribute to the past and embraces all the promise and potential of a fully modern workplace. Beginning Summer 2017.



"It is my philosophy that the modern city should be built along urban models where all the necessities of life are included within walking distance."

-John Portman, 1990



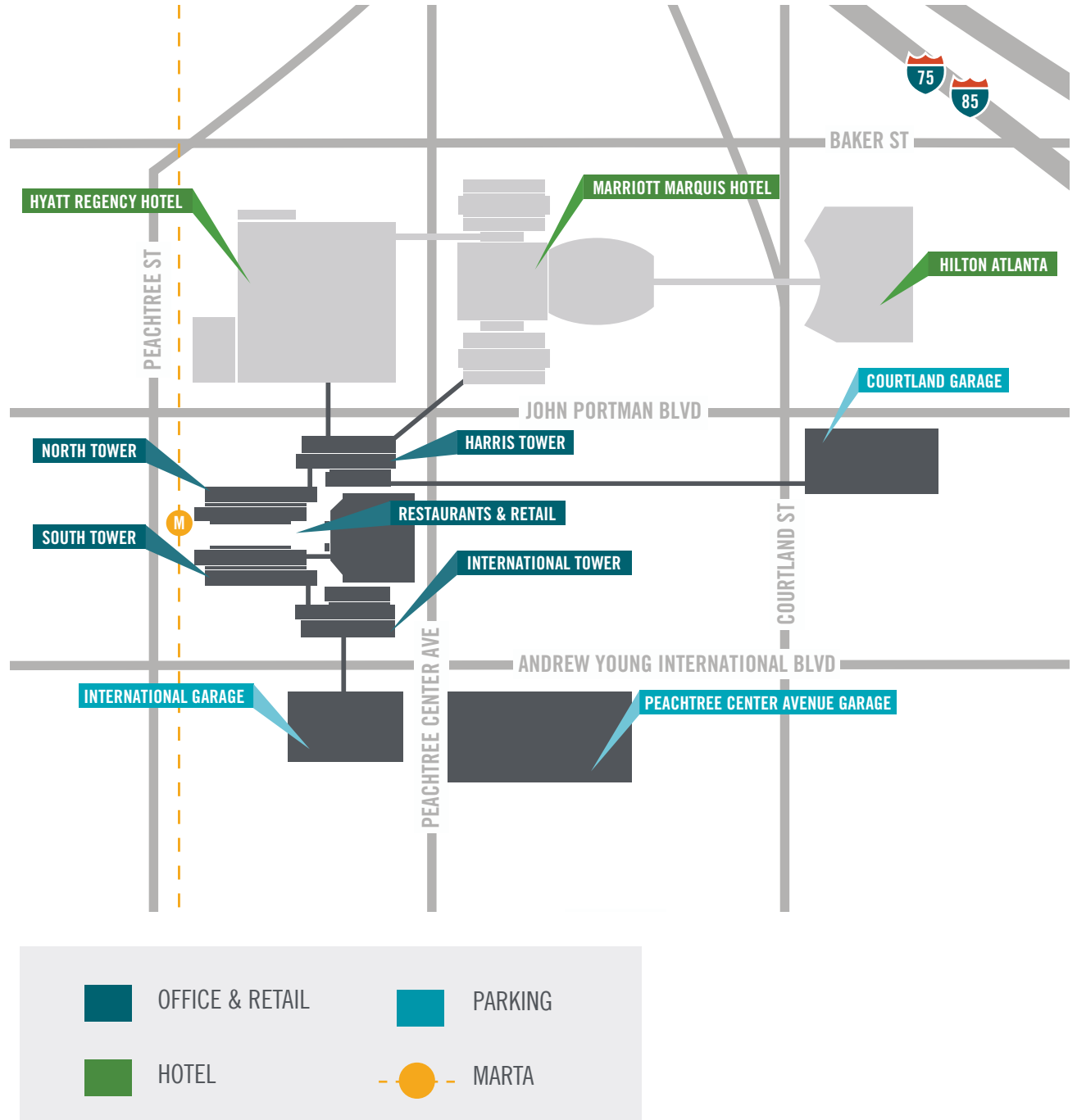
ACCLAIMED ARCHITECTURE

Atlanta's first transit-oriented development, Peachtree Center embodies all of the trademarks of its mid century modern design. The distinct John Portman architecture boasts signature floor-to-ceiling windows and connected elevated walkways that create this unique city center.



CENTER TO THE CITY

With 4 buildings totaling 1.4 million square feet, Peachtree Center is a fully-connected mixed-use environment that allows employees and visitors alike to connect to everything they need; workplace, residences, hotels, restaurants, shopping, entertainment, airport and more.

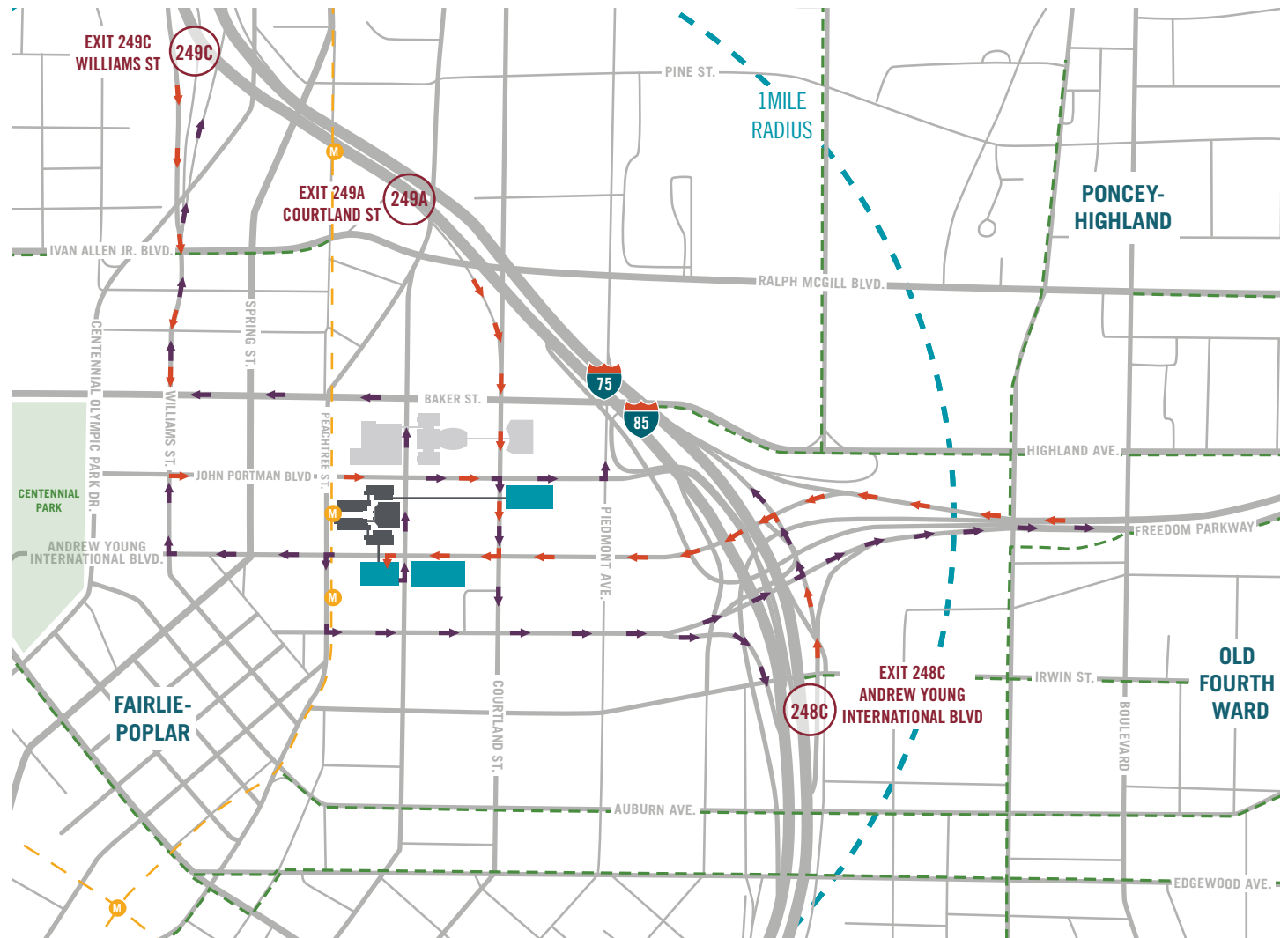


ALL ACCESS PASS

The center of activity for Downtown Atlanta, Peachtree Center hosts a dedicated MARTA rail station, BikeShare program and dozens of alternate commuter options. And with supremely easy access to the connector and surrounding residential neighborhoods, you're never far from your next destination.

LOCATION HIGHLIGHTS

- Minutes from Atlanta's thriving residential neighborhoods including Poncey Highland, Old Fourth Ward, Grant Park and Castleberry Hill.
- Direct access to on-site MARTA rail station, Atlanta Streetcar and local bus stops covering over 91 routes.
- 10 miles from Atlanta's Hartsfield-Jackson International airport with door-to-door rail access in 19 minutes.



A DOWNTOWN DESTINATION

In the heart of Downtown, Peachtree Center neighbors the city's top attractions and educational institutions in addition to an abundance of entertainment venues, hotels, conference centers and much more.

WALK SCORE

95

Very Walkable
daily errands do
not require a car



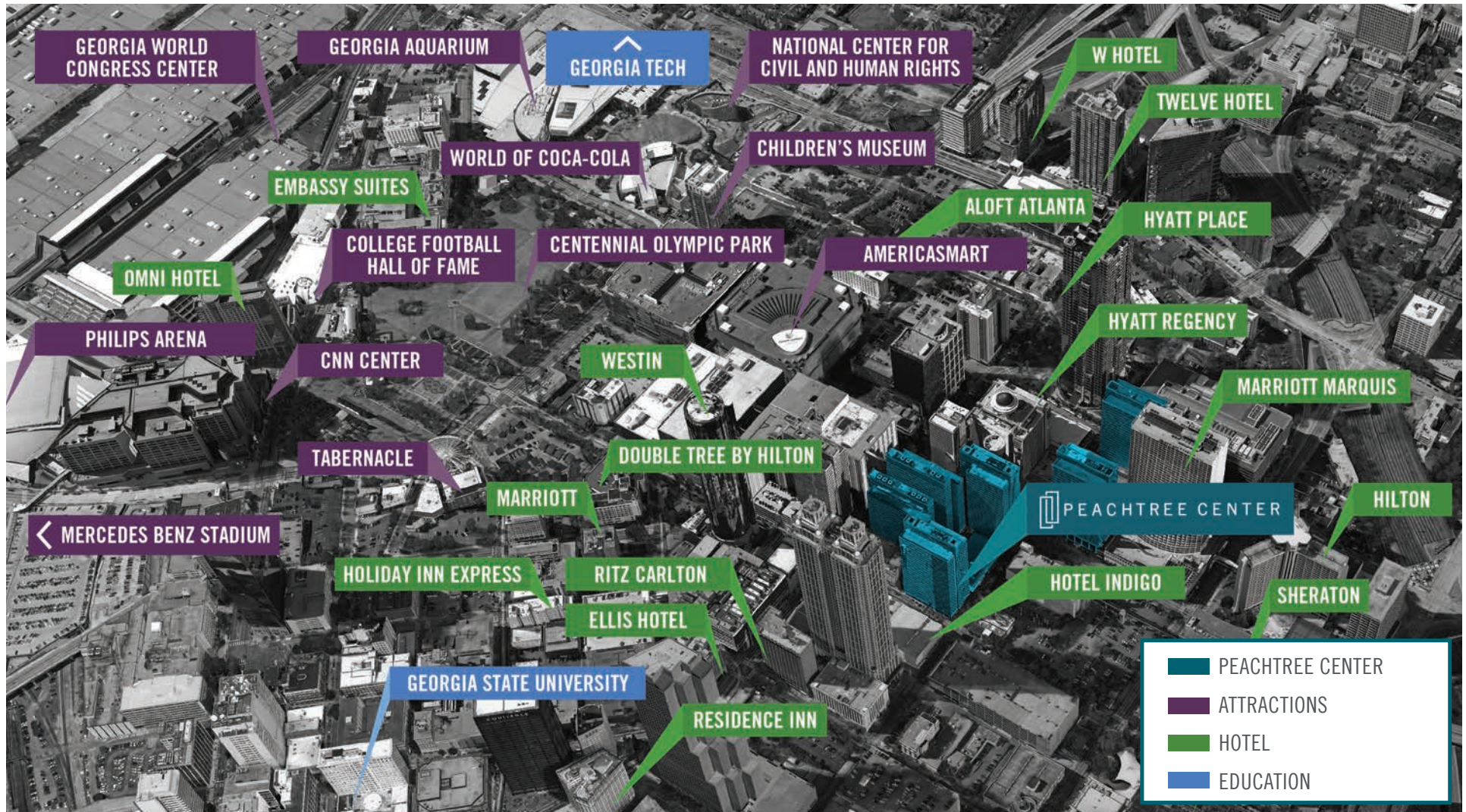
EXCELLENT TRANSIT

transit is convenient for
most trips



VERY BIKEABLE

mostly flat, excellent
bike lanes





YOUR BEST BUSINESS PLAN

Rectangular, efficient floorplates coupled with signature Portman floor-to-ceiling windows allow for a bright open office environment to inspire your workforce.

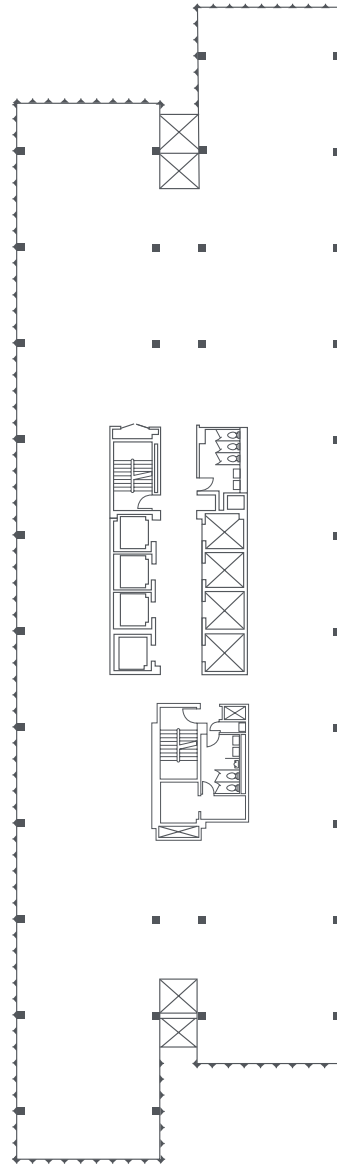
NORTH & SOUTH TOWERS

- Approximately 14,500 SF
typical floorplate

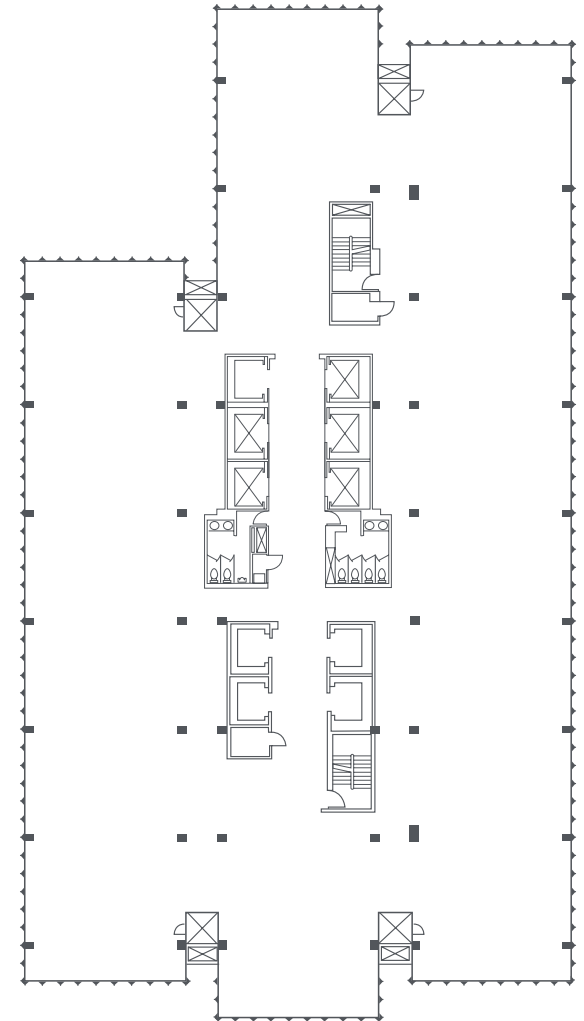
HARRIS & INTERNATIONAL TOWERS

- Approximately 16,200 SF
typical floorplate

NORTH & SOUTH TOWERS



HARRIS & INTERNATIONAL TOWERS





PEACHTREE CENTER

FOR LEASING INFORMATION

SCOTT DEMYER

scott.demyer@colliers.com
404.781.0217

EMILY RICHARDSON

emily.richardson@colliers.com
404.574.1086

PEACHTREECENTER.COM

Colliers
INTERNATIONAL

