

FOR SALE/LEASE

Historic Haddonfield Office Space



265 KINGS HIGHWAY EAST, HADDONFIELD, NEW JERSEY



Property Features

- › Professional office space on the 1st floor with apartments on the 2nd & 3rd floors
 - 1st floor: 1,000*-2,388 SF
 - 2nd floor: 1,783 SF
 - 3rd floor: 1,244 SF (long-term tenant in place)
- › Private parking lot behind the building
- › Current owner will sign a long-term lease with new owner
- › Downtown Historic Haddonfield location
- › Situated on the corner of Kings Highway and Grove Street
- › Walking distance to downtown shopping and restaurant district
- › Short drive to Wegman's and Whole Foods

* Immediately available

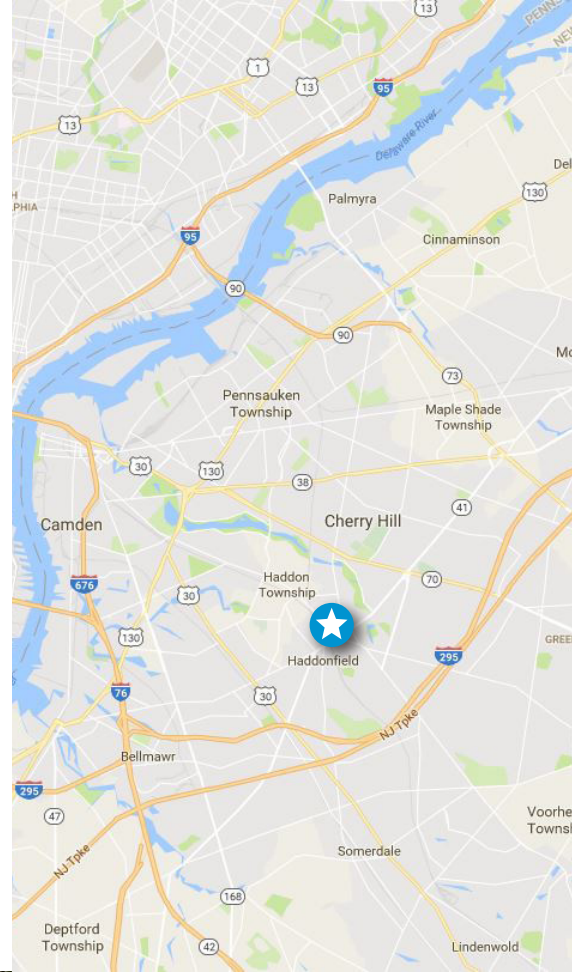
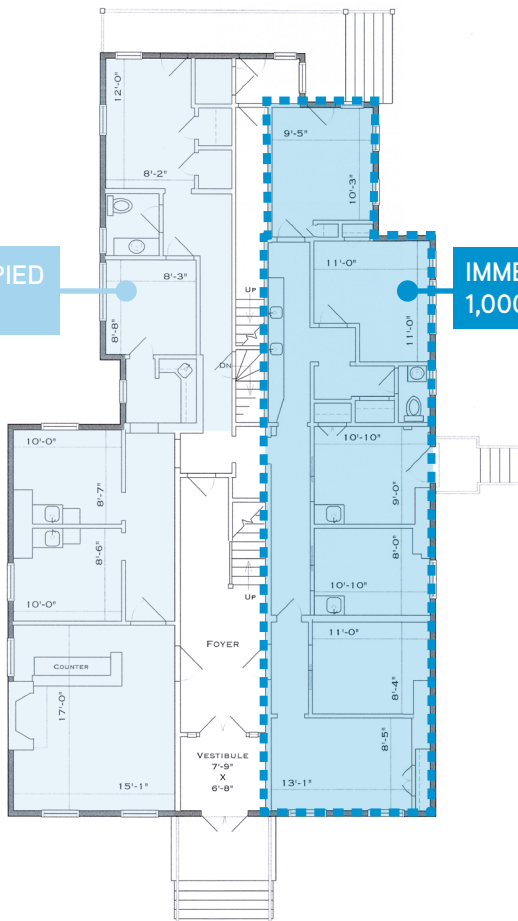
Contact

CHRISTINA DEL DUCA
SENIOR VICE PRESIDENT
+1 856 336 0001
christina.delduca@colliers.com

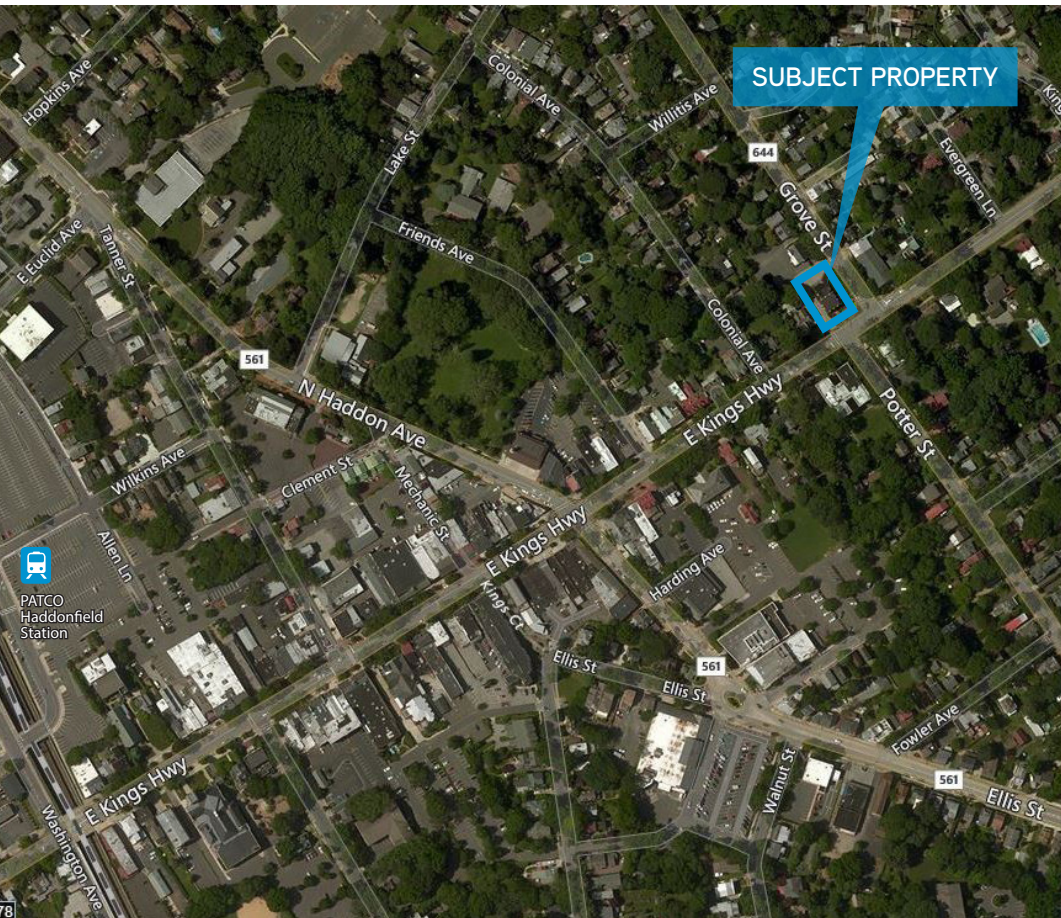
COLLIERS INTERNATIONAL
1317 Route 73
Suite 109
Mount Laurel, NJ 08054
+1 856 234 9300
www.colliers.com/mountlaurel

CURRENTLY OCCUPIED
1,000 SF

IMMEDIATELY AVAILABLE
1,000SF



SUBJECT PROPERTY



Contact

CHRISTINA DEL DUCA
SENIOR VICE PRESIDENT
+1 856 336 0001
christina.delduca@colliers.com



COLLIERS INTERNATIONAL
1317 Route 73
Suite 109
Mount Laurel, NJ 08054
+1 856 234 9300



@ColliersSNJ



ColliersSNJ



colliers.com/mountlaurel

The foregoing information was furnished to us by sources which we deem to be reliable, but no warranty or representation is made as to the accuracy thereof. Subject to correction of errors, omissions, change of price, prior sale or withdrawal from market without notice. The aerial image is intended to provide a general outline of the subject property. It is not a survey nor should it be relied upon for purposes of determining property lines or boundaries.