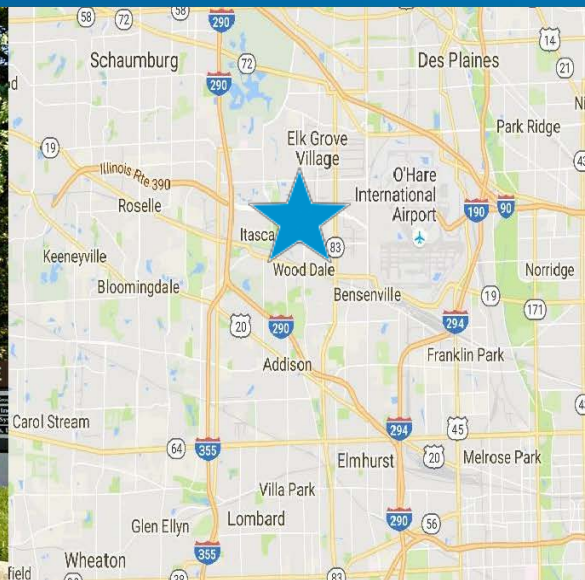
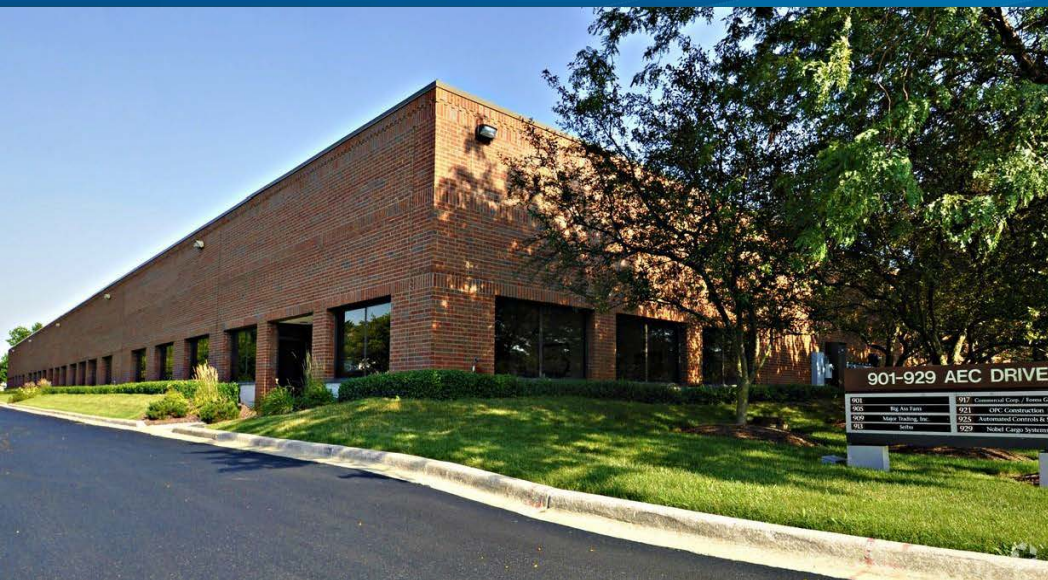


FOR LEASE > 6,709 SF

909 AEC Drive



WOOD DALE, IL



About This Property

- > Available: 6,709 SF
- > Office: 839 SF
- > Net Lease Rate: Subject To Offer
- > Ceiling Height: 18' clear
- > Loading: Access to 3 shared docks
- > Sprinklers: Wet
- > Car Parking: 16 spaces
- > Tax: \$1.60/SF
- > CAM: \$1.42/SF
- > Insurance: \$0.07/SF
- > Year Built: 1985
- > Heart of O'Hare Submarket
- > Close to major expressways and O'Hare International Airport

Contact Us

Matthew Stauber, SIOR

Principal

847 698 8236

Matthew.Stauber@colliers.com

Jonathan Kohn

Principal

847 698 8279

Jonathan.Kohn@colliers.com

John D'Orazio

Associate

847 384 2823

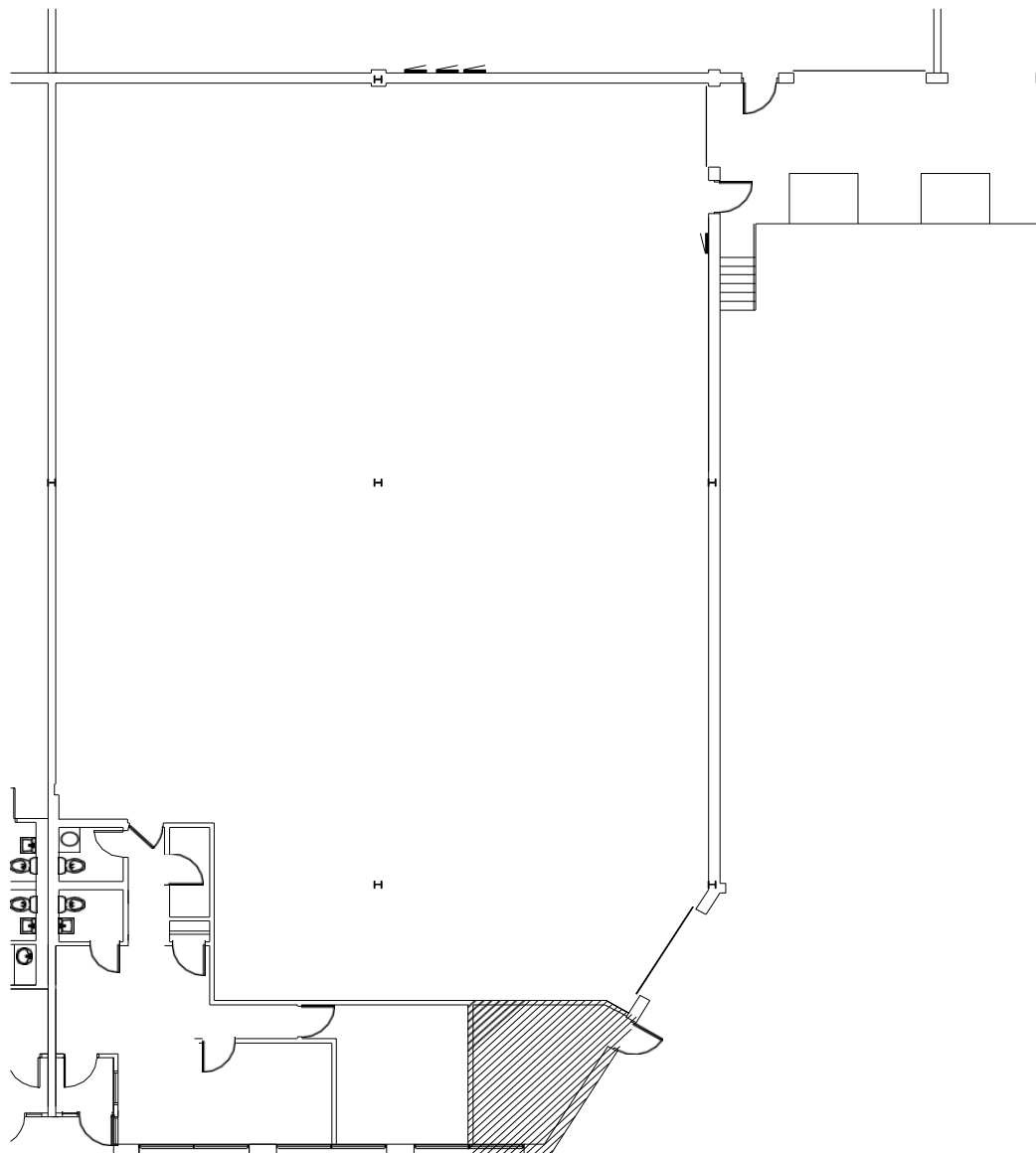
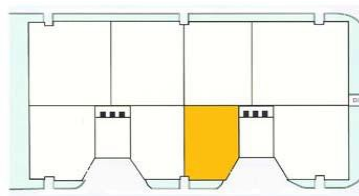
John.Dorazio@colliers.com

No warranty or representation is made to the accuracy of the foregoing information.
Terms of sale or lease and availability are subject to change or withdrawal without notice.

COLLIERS INTERNATIONAL
6250 N. River Road, Suite 11-100
Rosemont, IL 60018
www.colliers.com

909 AEC Drive > Site Plan

FLOOR PLAN | 6,709 SF



Matthew Stauber, SIOR
Principal
847 698 8236
Matthew.Stauber@colliers.com

Jonathan Kohn
Principal
847 698 8279
Jonathan.Kohn@colliers.com

John D'Orazio
Associate
847 384 2823
John.Dorazio@colliers.com

