

FOR LEASE

Jerry H Miller

JORDAN COMMONS

9350 South 150 East
Sandy, Utah

Colliers



JORDAN COMMONS

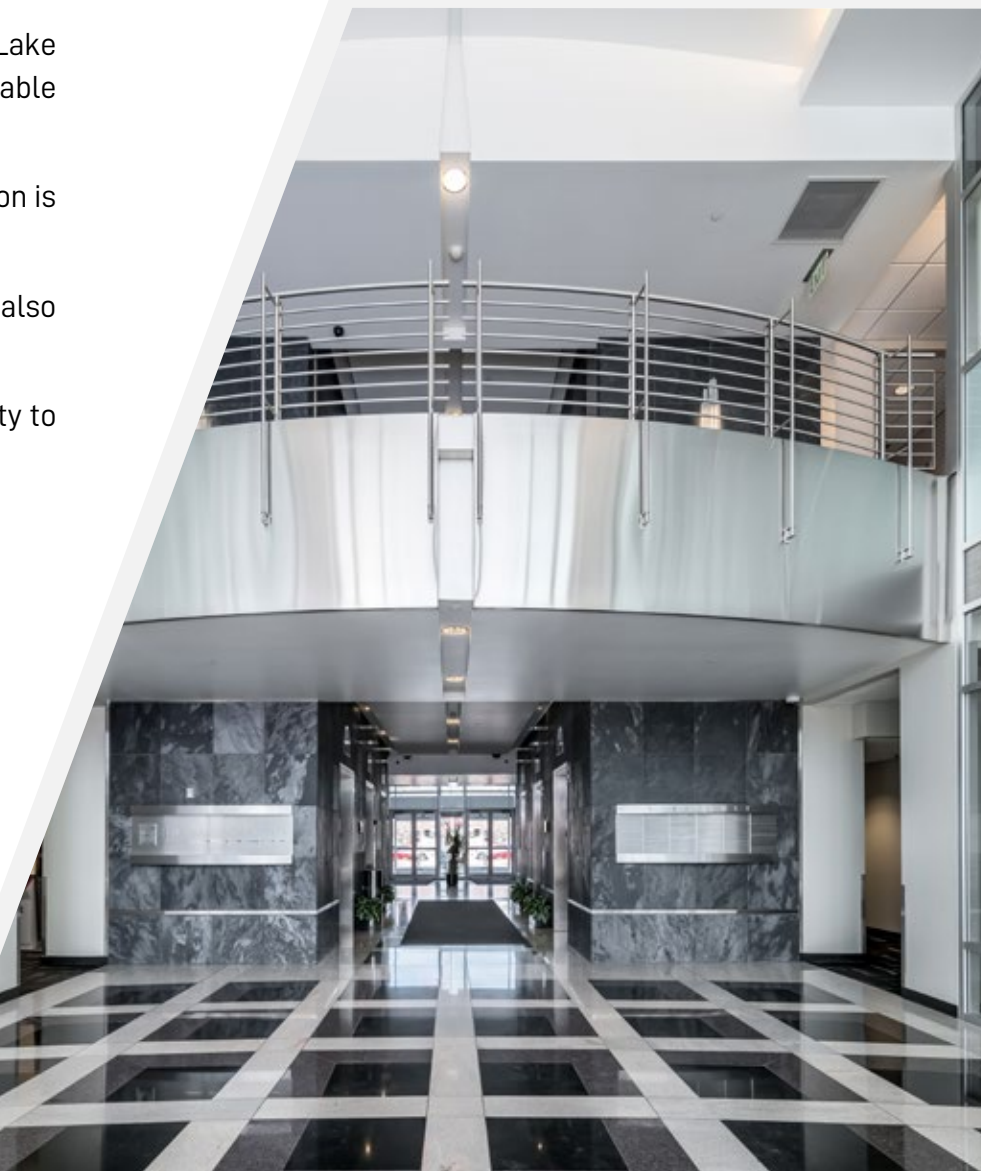
Jordan Commons is a Transit Oriented Development (TOD) located in the heart of the Salt Lake Valley and consists of a ten-story office tower with more than 240,000 square feet of rentable office space, restaurants and a 20-screen, state-of-the-art movie theater.

Located next door to the South Towne Exposition Center and the Rio Tinto Stadium, this location is located with convenient access to I-15 and the UTA TRAX light rail (Sandy Expo) station.

Featuring onsite restaurants, meeting space and free structured parking, the office tower also incorporates true Class A finishes, panoramic views and a stunning 2-story lobby entrance.

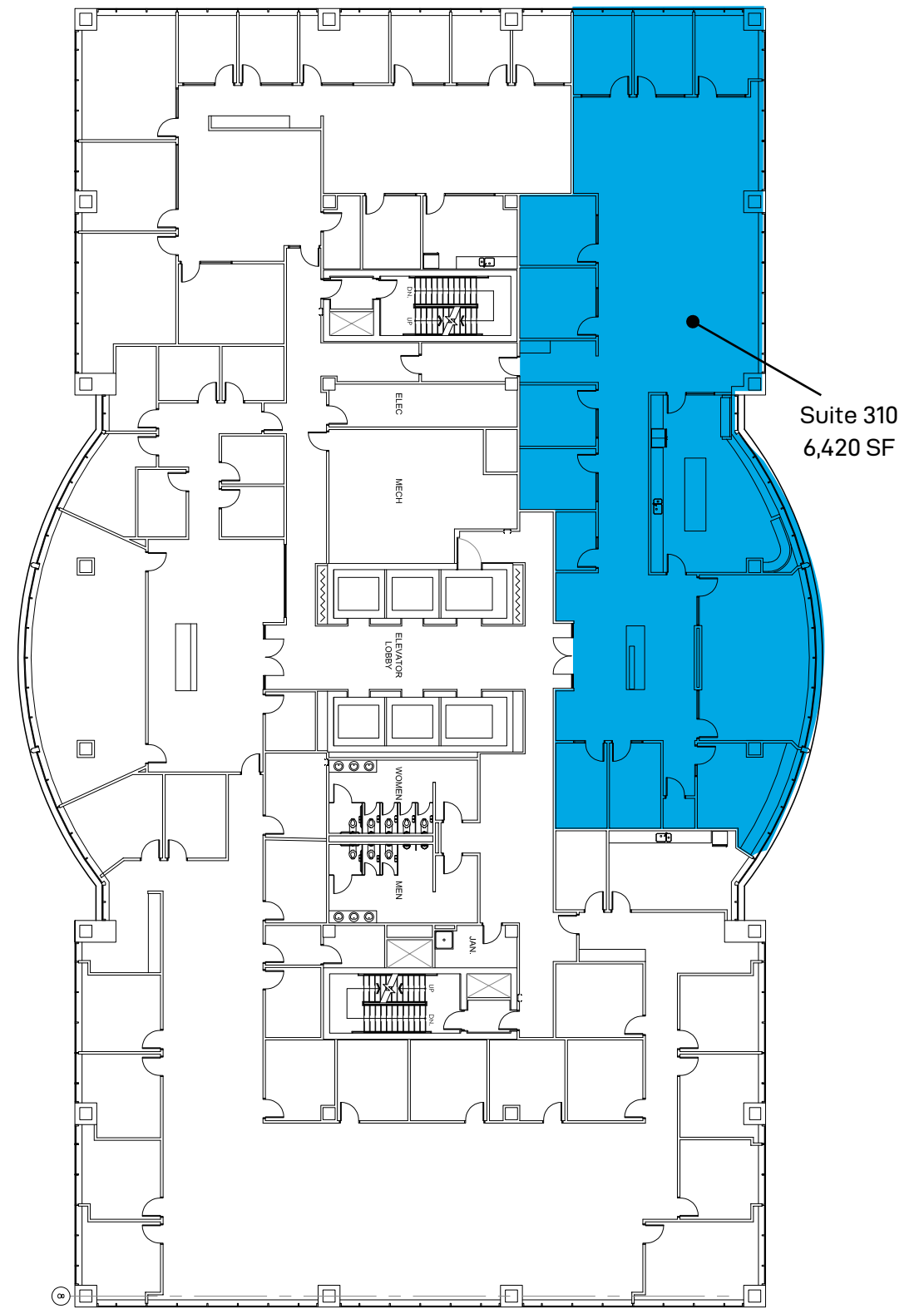
This location is the ideal address for employee recruitment and retention, with close proximity to numerous hotels, retail services, restaurants and area amenities.

- . Space available from 6,420 square feet
- . Highly Competitive Lease Rate - \$28.00 per square foot, Full Service
- . Direct access to the Cottonwood Canyon Ski Resorts along 9000 South
- . Spectacular Wasatch Front views
- . Located in Jordan Commons Commercial Center | True Walkable Amenities
- . Adjacent to the Mountain America Exposition Center and the Rio Tinto Soccer Stadium
- . Property consists of a 20-screen world class Megaplex movie theatre
- . Convenient access to I-15 & a UTA Trax Station (Sandy Expo)
- . Ample parking stalls including covered parking



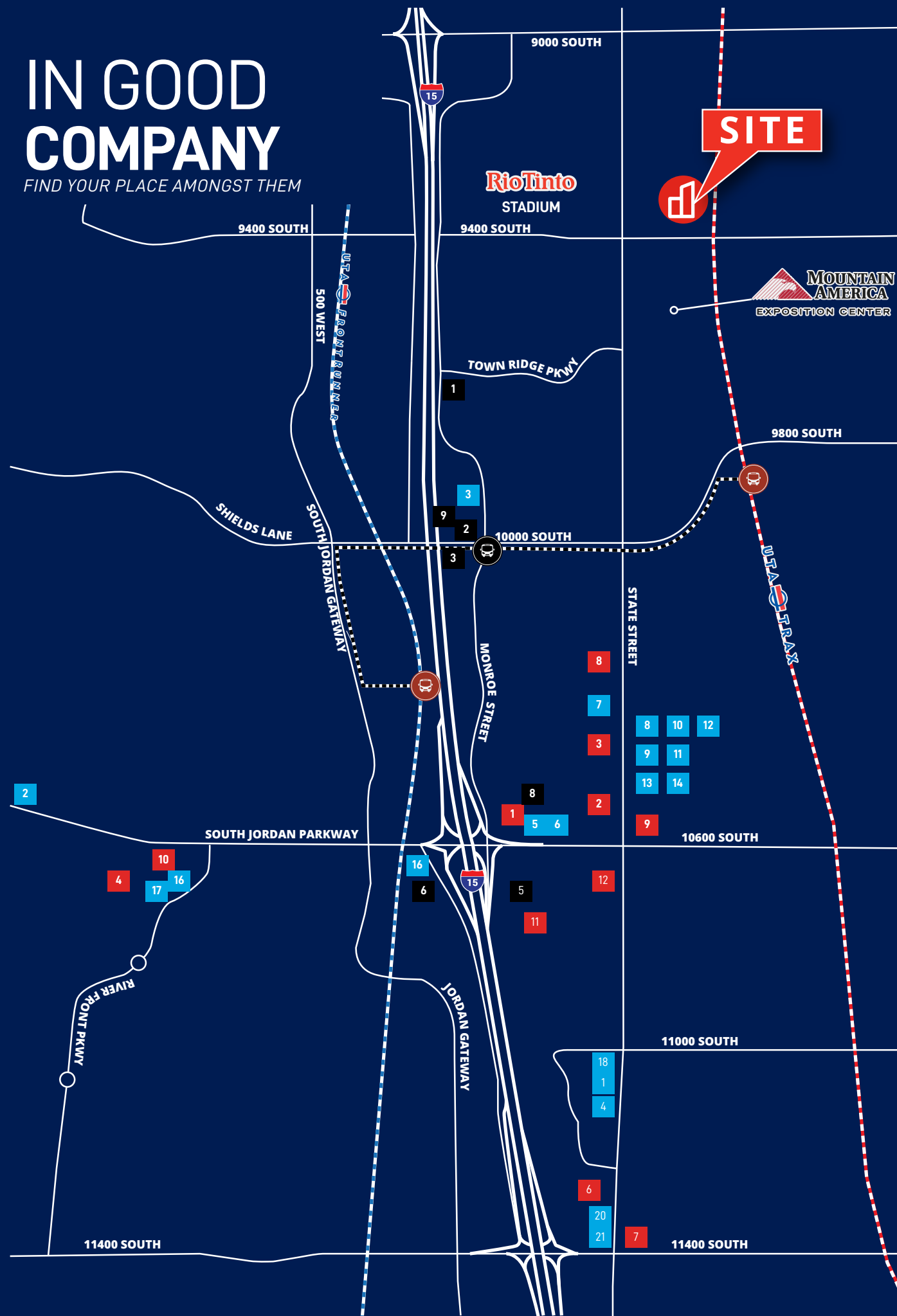


3rd Floor



IN GOOD COMPANY

FIND YOUR PLACE AMONGST THEM



AMENITIES

HOSPITALITY / SERVICES

1. HYATT HOUSE
2. MARRIOTT
3. HILTON GARDEN INN
4. HOME2 SUITES
5. SLEEP INN
6. HAMPTON INN
7. LIFETIME FITNESS
8. THE SHOPS AT SOUTH TOWN
9. HALE CENTRE THEATRE

DINING

1. TEXAS ROADHOUSE
2. OLIVE GARDEN
3. CHILI'S
4. MARKET STREET GRILL
5. TSUNAMI
6. BUFFALO WILD WINGS
7. ORIGINAL PANCAKE HOUSE
8. SLACKWATER PIZZA
9. LOS CUCOS MEXICAN CAFÉ
10. GECKOS
11. CARVERS STEAK & SEAFOOD
12. SUNDAYS BEST
13. TOSCANO

QUICK SERVICE FOOD

1. MO BETTAH'S
2. KNEADERS
3. CAIRNS CAFÉ
4. VESSEL KITCHEN
5. STARBUCKS
6. VIA 313 PIZZA
7. NOODLES & COMPANY
8. PEI WEI
9. CORE LIFE EATERY
10. FIREHOUSE SUBS
11. COSTA VIDA
12. RUMBI
13. SLAPFISH
14. FIVE GUYS
15. CHIPOTLE
16. R&R BBQ
17. JCW'S
18. CAFÉ ZUPAS
19. SHAKE SHACK
20. VILLAGE BAKER
21. ZAO ASIAN CAFÉ

LEGEND:

- SITE
- MASS TRANSIT STATION
- BUS STOP
- TRAX LINE
- FRONTRUNNER LINE
- BUS ROUTE

DRIVE TIMES



AIRPORT
20 MINS



DOWNTOWN SLC
20 MINS



POINT OF THE MOUNTAIN
20 MINS



UNIVERSITY OF UTAH
30 MINS



Brandon Fugal
+1 801 947 8300
brandon.fugal@colliers.com

Josh Smith
+1 801 947 8300
josh.smith@colliers.com

Angela Kroneberger
+1 801 947 8300
angela.kroneberger@colliers.com



6440 S. Millrock Dr., Suite 500
Salt Lake City, UT 84121
Main: +1 801 947 8300
colliers.com

JORDAN COMMONS

This document has been prepared by Colliers for advertising and general information only. Colliers makes no guarantees, representations or warranties of any kind, expressed or implied, regarding the information including, but not limited to, warranties of content, accuracy and reliability. Any interested party should undertake their own inquiries as to the accuracy of the information. Colliers excludes unequivocally all inferred or implied terms, conditions and warranties arising out of this document and excludes all liability for loss and damages arising there from. This publication is the copyrighted property of Colliers and /or its licensor(s). © 2025 All rights reserved.