



Alamo Oaks Office Park

Highly Visible Office Space in the Heart of Alamo

FOR LEASE | 3189 Danville Boulevard, Alamo, CA

- › Located adjacent to the Alamo Plaza. Alamo North shares parking and access with the shopping center.
- › All office suites have generous window lines.
- › Suite sizes are ideal for small to medium users.
- › 5/1000 parking ratio.
- › Short term leases are available.

Eric Erickson CCIM SIOR
Senior Vice President
+1 925 279 5580
eric.erickson@colliers.com
Lic. No. 01177336

Scott Ellis SIOR
Executive Managing Director
+1 925 279 5575
scott.ellis@colliers.com
Lic. No. 00713974



Colliers International
1850 Mt. Diablo Blvd. | Suite 200
Walnut Creek, CA 94596
P: +1 925 279 0120
www.colliers.com/norcal



ALAMO OAKS
OFFICE PARK

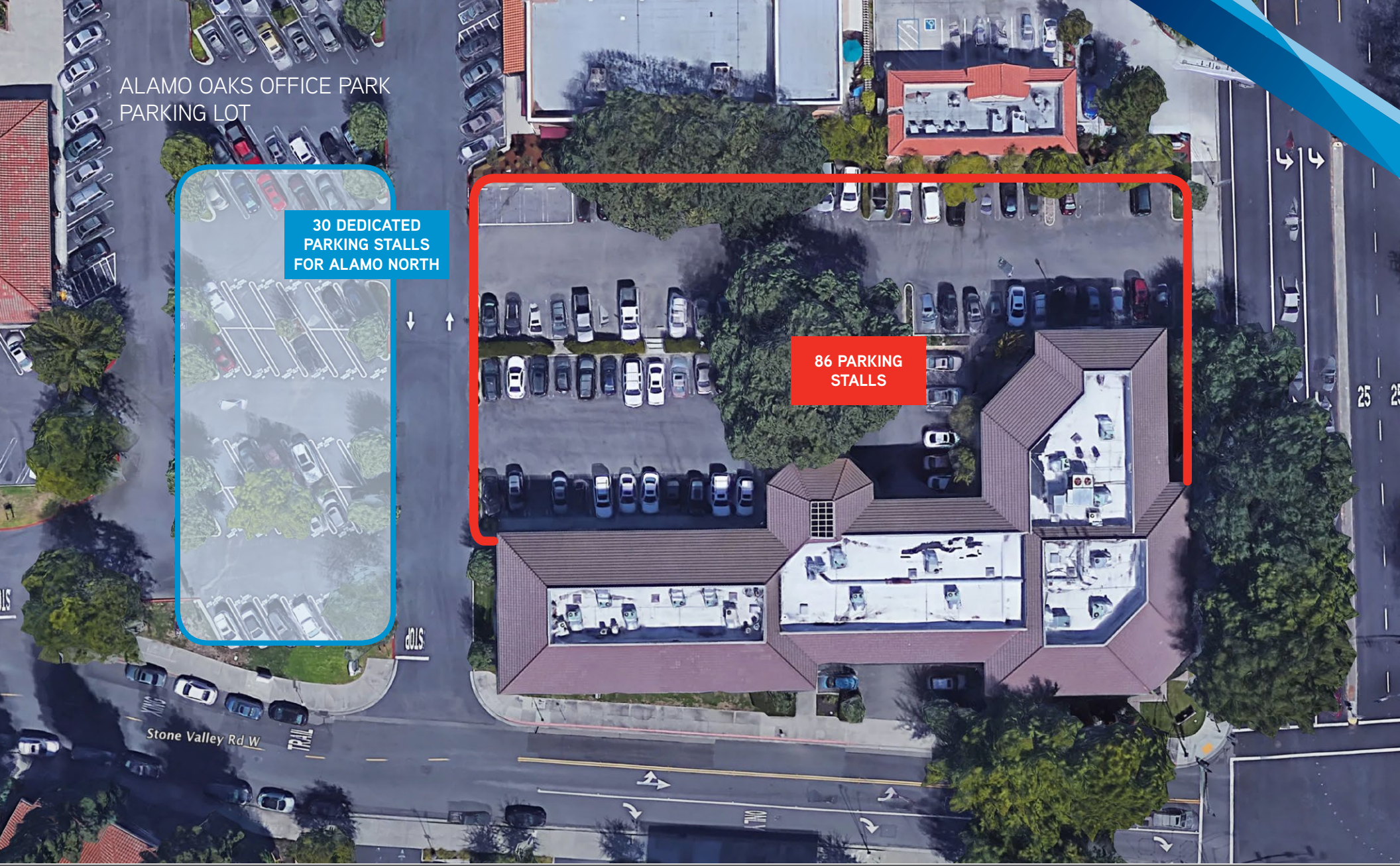
FOR LEASE | 3189 Danville Boulevard, Alamo, CA

Eric Erickson CCIM SIOR
Senior Vice President
+1 925 279 5580
eric.erickson@colliers.com
Lic. No. 01177336

Scott Ellis SIOR
Executive Managing Director
+1 925 279 5575
scott.ellis@colliers.com
Lic. No. 00713974



Colliers International
1850 Mt. Diablo Blvd. | Suite 200
Walnut Creek, CA 94596
P: +1 925 279 0120
www.colliers.com/norcal



ALAMO OAKS OFFICE PARK
PARKING LOT

30 DEDICATED
PARKING STALLS
FOR ALAMO NORTH

86 PARKING
STALLS

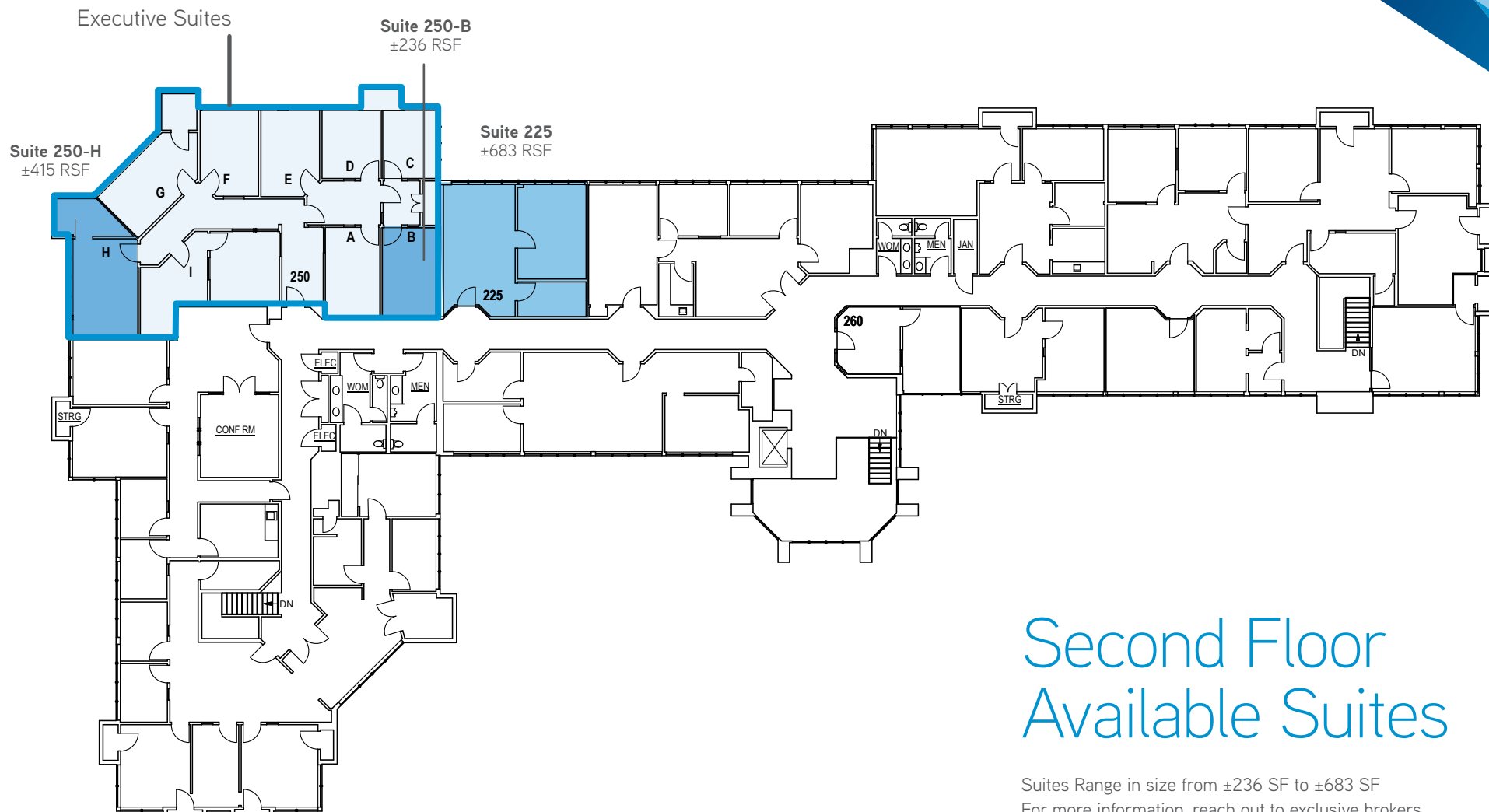
FOR LEASE | 3189 Danville Boulevard, Alamo, CA

Eric Erickson CCIM SIOR
Senior Vice President
+1 925 279 5580
eric.erickson@colliers.com
Lic. No. 01177336

Scott Ellis SIOR
Executive Managing Director
+1 925 279 5575
scott.ellis@colliers.com
Lic. No. 00713974



Colliers International
1850 Mt. Diablo Blvd. | Suite 200
Walnut Creek, CA 94596
P: +1 925 279 0120
www.colliers.com/norcal



Second Floor Available Suites

Suites Range in size from ±236 SF to ±683 SF
For more information, reach out to exclusive brokers

AVAILABLE

FOR LEASE | 3189 Danville Boulevard, Alamo, CA

Eric Erickson CCIM SIOR
Senior Vice President
+1 925 279 5580
eric.erickson@colliers.com
Lic. No. 01177336

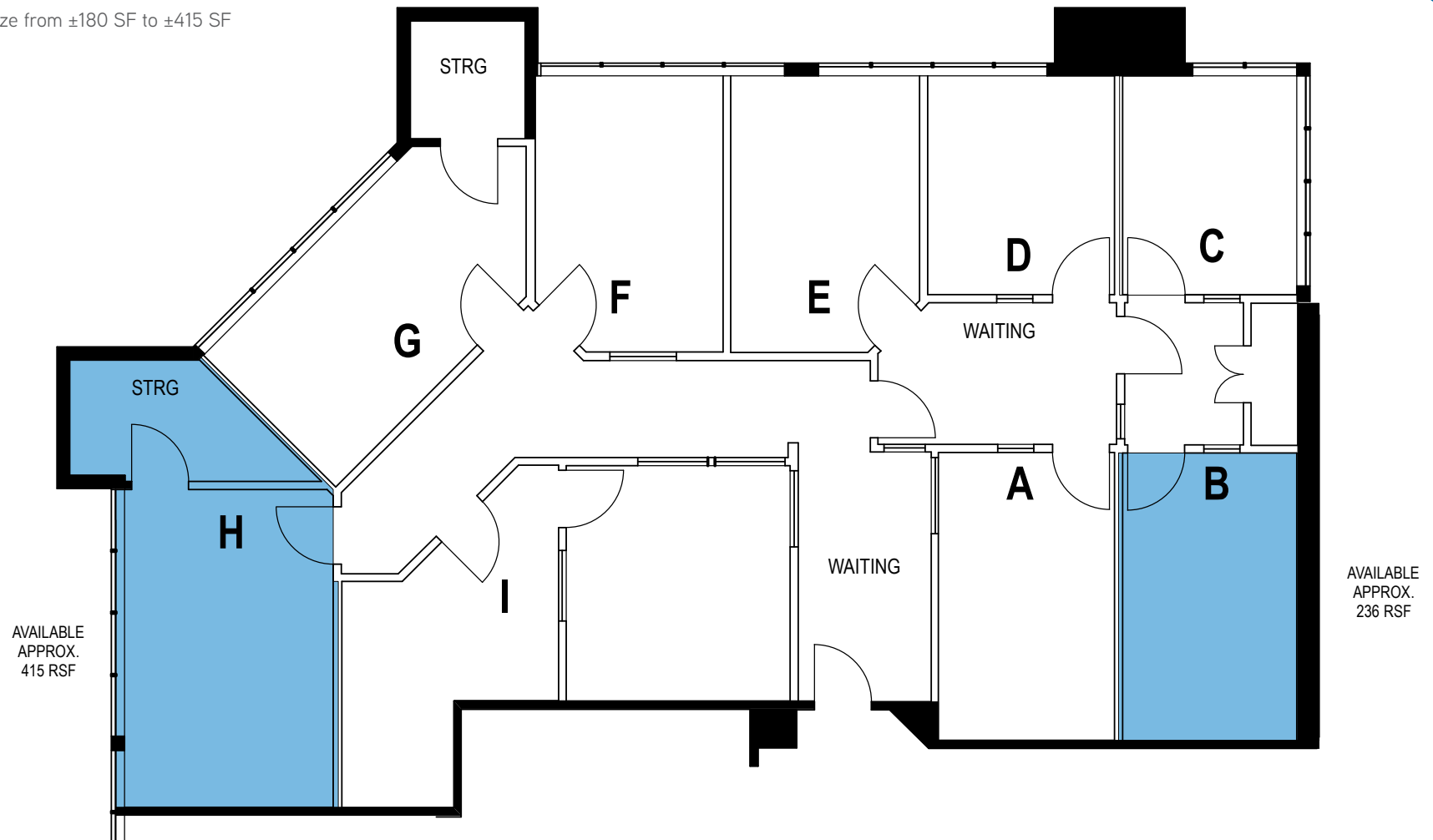
Scott Ellis SIOR
Executive Managing Director
+1 925 279 5575
scott.ellis@colliers.com
Lic. No. 00713974



Colliers International
1850 Mt. Diablo Blvd. | Suite 200
Walnut Creek, CA 94596
P: +1 925 279 0120
www.colliers.com/norcal

Executive Suites

Suites Range in size from ±180 SF to ±415 SF



AVAILABLE

FOR LEASE | 3189 Danville Boulevard, Alamo, CA

Eric Erickson CCIM SIOR
Senior Vice President
+1 925 279 5580
eric.erickson@colliers.com
Lic. No. 01177336

Scott Ellis SIOR
Executive Managing Director
+1 925 279 5575
scott.ellis@colliers.com
Lic. No. 00713974



Colliers International
1850 Mt. Diablo Blvd. | Suite 200
Walnut Creek, CA 94596
P: +1 925 279 0120
www.colliers.com/norcal