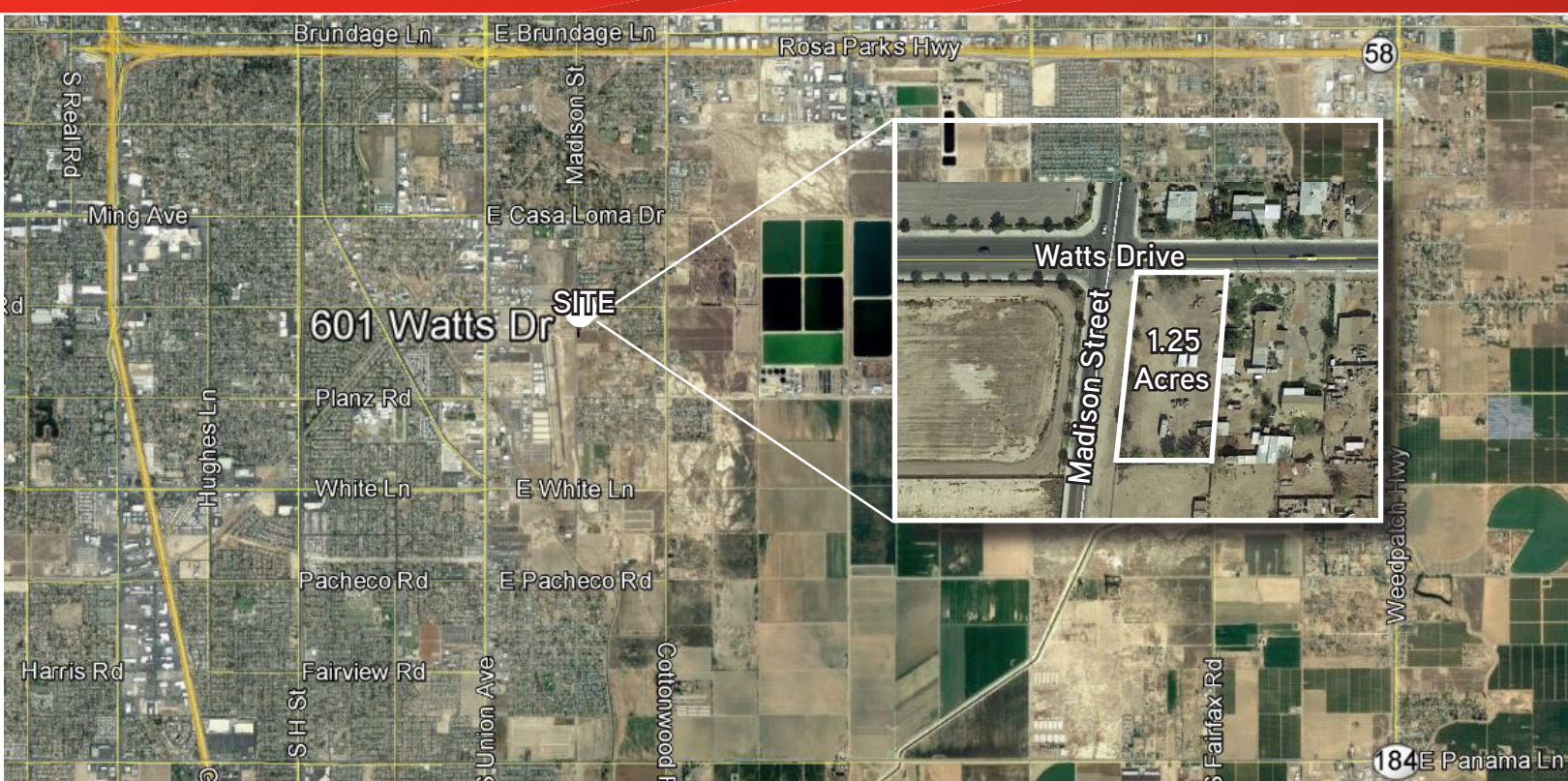


FOR SALE OR LEASE > 1.25 ACRES



M-1 PARCEL OF LAND

601 WATTS DRIVE, BAKERSFIELD, CA 93307



DESCRIPTION:

Subject property is an approximately 1.25 acre vacant parcel of land, zoned M-1. It is located in South Bakersfield at the southeast corner of Watts Drive and Madison Street.

HIGHLIGHTS:

- Vacant parcel of land located in South Bakersfield
- 1.25 acres in size
- M-1 zoned
- Parcel has a small fence around the perimeter with gated access in front
- Curbs and gutters on the north side of parcel
- Rectangular shaped parcel
- All utilities at or in front of parcel
- APN #170-161-18
- Property is located directly adjacent to the northeast corner of the Bakersfield Municipal Airport

REDUCED PRICE!

SALE PRICE: \$169,000.00

SELLER FINANCING AVAILABLE

LEASE RATE: \$1,200.00 per month

AGENT: JASON ALEXANDER
661 631 3818
License No. 01360995
jason.alexander@colliers.com

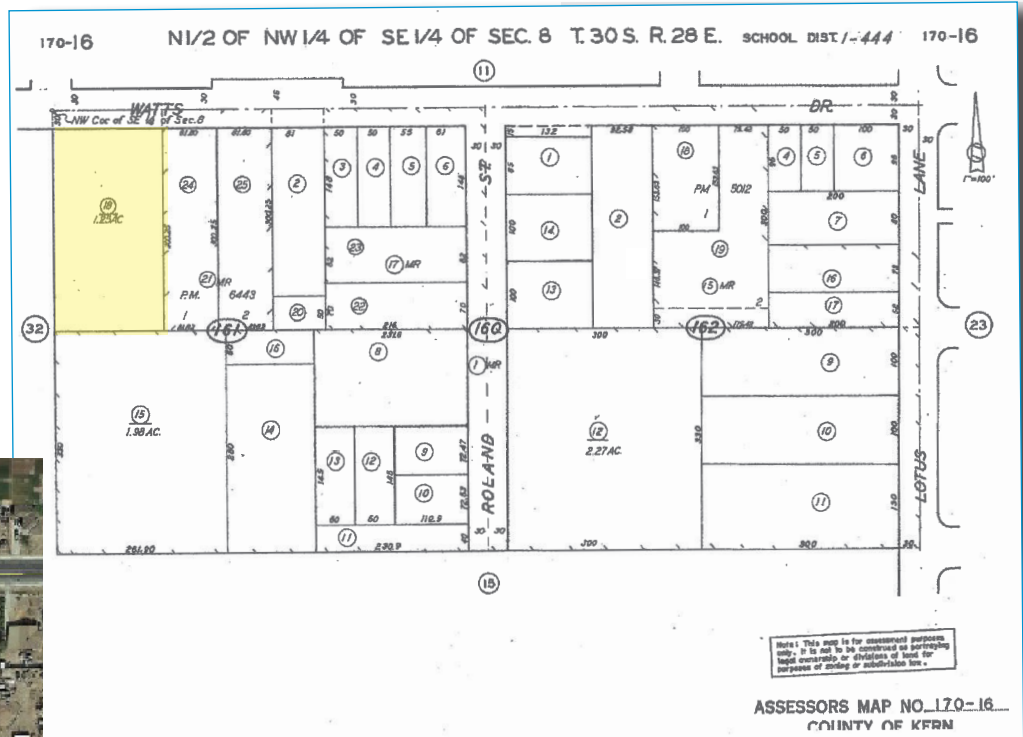
COLLIERS INTERNATIONAL
10000 Stockdale Highway #102
Bakersfield, CA 93311
www.colliers.com/bakersfield

FOR SALE OR LEASE > 1.25 ACRES

M-1 PARCEL OF LAND

601 WATTS DRIVE, BAKERSFIELD, CA 93307

1.25 Acres



CONTACT US:

AGENT: JASON ALEXANDER
LICENSE NUMBER 01360995
SENIOR VICE PRESIDENT | PRINCIPAL
CENTRAL CALIFORNIA
OFFICE PROPERTIES TEAM
661 631 3818
jason.alexander@colliers.com

COLLIERS INTERNATIONAL
10000 Stockdale Hwy., Suite 102
Bakersfield, CA 93311
www.colliers.com/bakersfield

This document has been prepared by Colliers International for advertising and general information only. Colliers International makes no guarantees, representations or warranties of any kind, expressed or implied, regarding the information including, but not limited to, warranties of content, accuracy and reliability. Any interested party should undertake their own inquiries as to the accuracy of the information. Colliers International excludes unequivocally all inferred or implied terms, conditions and warranties arising out of this document and excludes all liability for loss and damages arising therefrom. This publication is the copyrighted property of Colliers International and/or its licensor(s). ©2013. All rights reserved.

