



Available for Sale

12905 Pioneer Trail

Eden Prairie, MN 55347

Brad Bohlman, SIOR
Executive Vice President
+1 952 897 7733
brad.bohlman@colliers.com

Eric Riemer
CRE Partners
+1 612 730 4631
eric@creminnesota.com

Building Specifications



Property Information

2,473 SF property located in Eden Prairie, just off of Pioneer Trail and Flying Cloud Drive with easy access to Hwy 169, 212, and I 494. The office condo was recently renovated from top to bottom with high end office finishes including floor to ceiling barn door glass office partitions in all the offices and custom furniture and lighting throughout. The build-out includes 5 private offices, an “open office” suite that can accommodate 5 people, conference room, work space area for copier, refrigerator, etc. 2 private restrooms, and small warehouse area with drive in door access.

Building Size

2,473 SF Total
2,079 SF Office
394 SF Warehouse/Storage

Loading

Small warehouse area with drive-in door access

Clear Height

12'

Year Built

1987

Available

Immediately

Sale Price

\$459,000

2025 Proposed Property Taxes

\$7,635.87

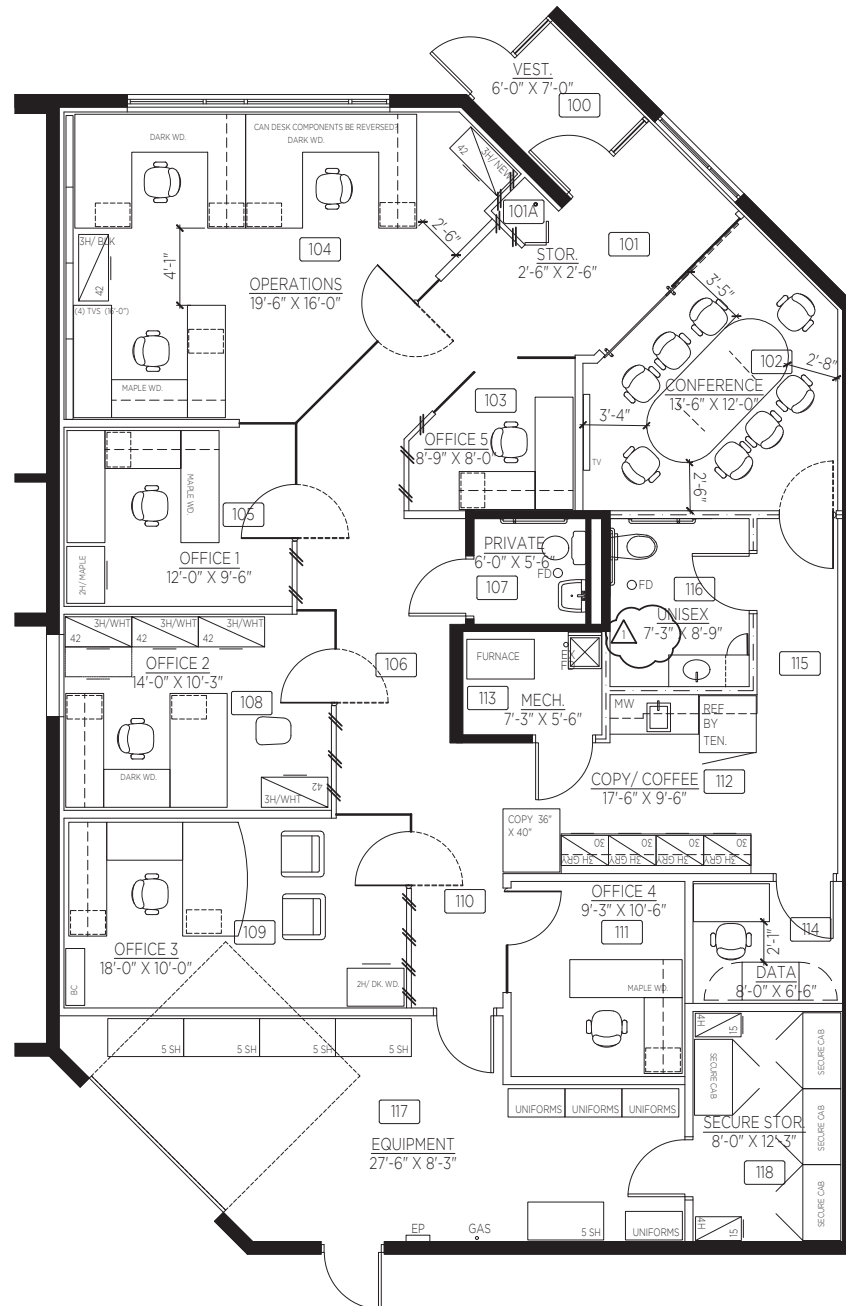
2024 Association Dues

\$7,000

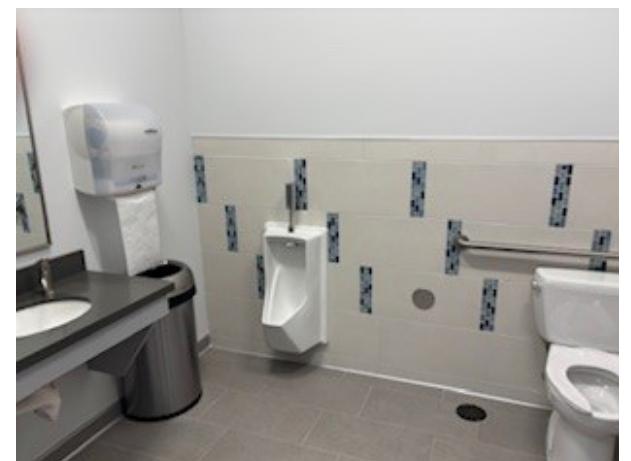
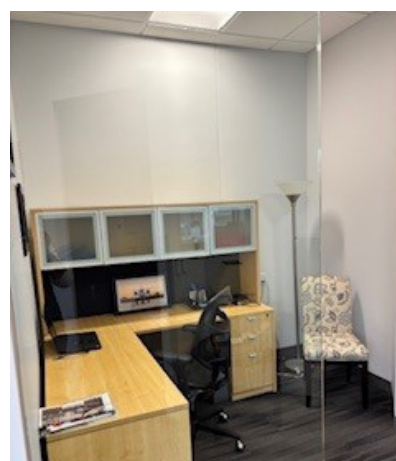
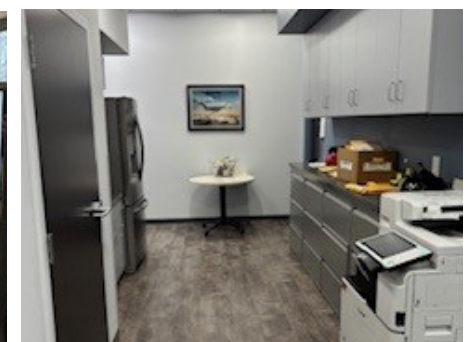
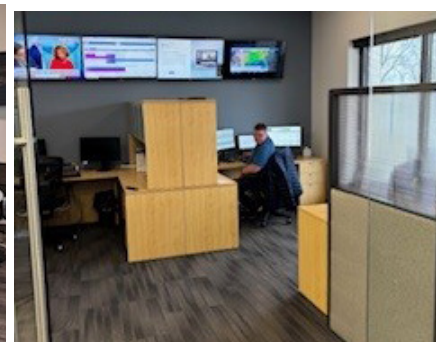
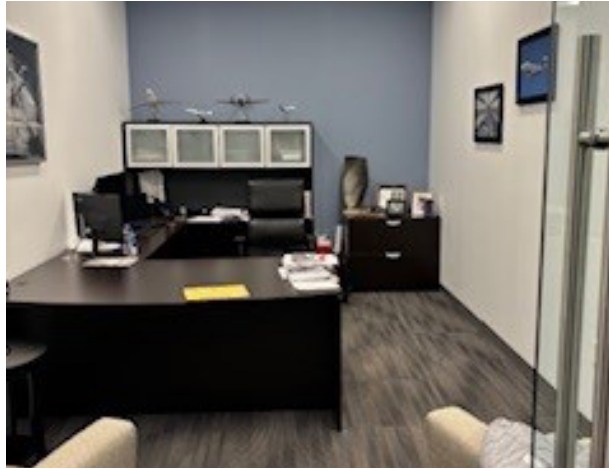
Sprinklered

Yes

Floor Plan



Photos





Contact

Brad Bohlman SIOR

Executive Vice President
+1 952 897 7733
brad.bohlman@colliers.com

Eric Riemer

CRE Partners
+1 612 730 4631
eric@creminnesota.com



1600 Utica Avenue South
Suite 300
St. Louis Park, MN 55416
P: +1 952 897 7700

This document has been prepared by Colliers International for advertising and general information only. Colliers International makes no guarantees, representations or warranties of any kind, expressed or implied, regarding the information including, but not limited to, warranties of content, accuracy and reliability. Any interested party should undertake their own inquiries as to the accuracy of the information. Colliers International excludes unequivocally all inferred or implied terms, conditions and warranties arising out of this document and excludes all liability for loss and damages arising there from. This publication is the copyrighted property of Colliers International and/or its licensor(s). ©2025. All rights reserved.