

KBS

Millrock North

6440 South Millrock Drive





LOCAL AMENITIES

RESTAURANTS

- Rustic Chicken
- Spitz Mediterranean
- Starbucks
- Trio Cafe
- Bandit's Grill & Bar
- Jimmy John's
- Coffee and Cocoa
- Dask's Greek Restaurant
- Happy Sumo
- Thai Basil
- Market Street Grill

HOTELS

- Hyatt Place
- Marriott Residence Inn
- Hampton Inn (Q4 2017)

SERVICES/RETAIL

- Powder House
- Zion's Bank
- Mountain America CU
- American Family Insurance
- Taylor Optical
- Health Food Store



KBS

KBS.com

FOR MORE INFORMATION

Brandon Fugal
+1 801 947 8300
brandon.fugal@colliers.com

Jordan Wall
+1 801 453 6833
jordan.wall@colliers.com

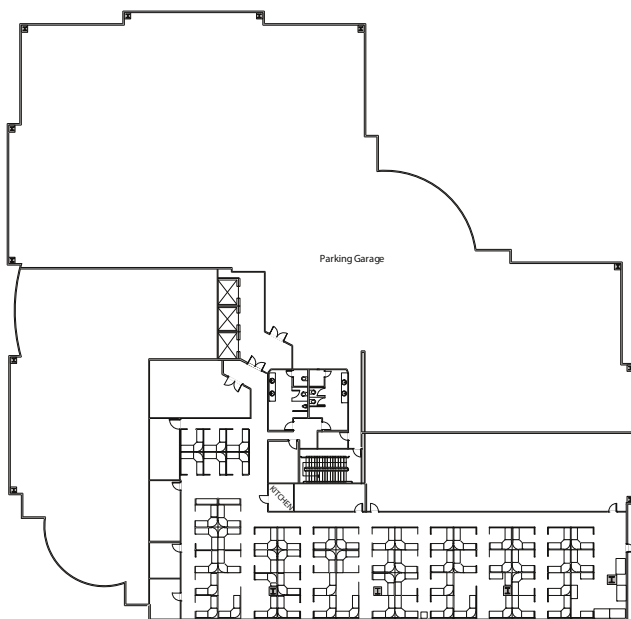
Josh Smith
+1 801 453 6823
josh.smith@colliers.com



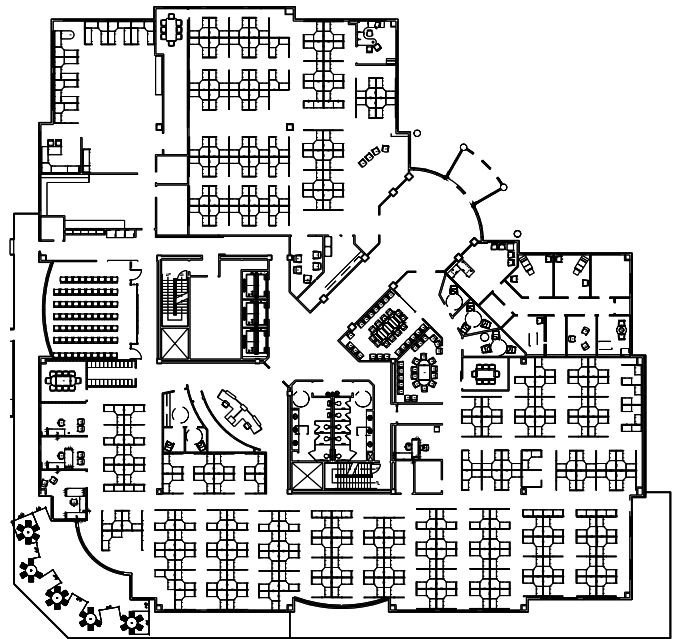
Property Highlights

- Full building available
- 152,280 rentable square feet
- \$34.00/SF full service lease rate
- 28,200+ rentable square feet typical floor plates
- 5/1,000 parking ratio - structured/covered
- New fitness and conference facility nearing completion
- Unbeatable views of the Wasatch Mountains and the Salt Lake Valley
- Millrock Park offers a 22 acre campus with over six acres of green space
- Immediate access to I-215, fifteen minute drive to Salt Lake International Airport, downtown
- Salt Lake City and ski resorts
- Walking distance to many amenities including: Hampton Inn, Hyatt Place, Starbucks, Cafe Zupas, Subway, Trio, Zions Bank, Happy Sumo and many more

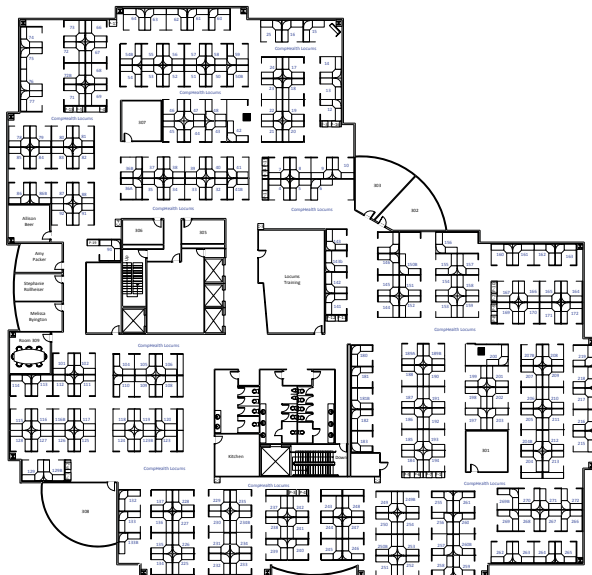
GARDEN LEVEL - 11,293 RSF



FIRST FLOOR - 27,211 RSF



SECOND FLOOR - 28,463 RSF



THIRD FLOOR - 28,983 RSF



Millrock North 6440 So. Millrock Dr.

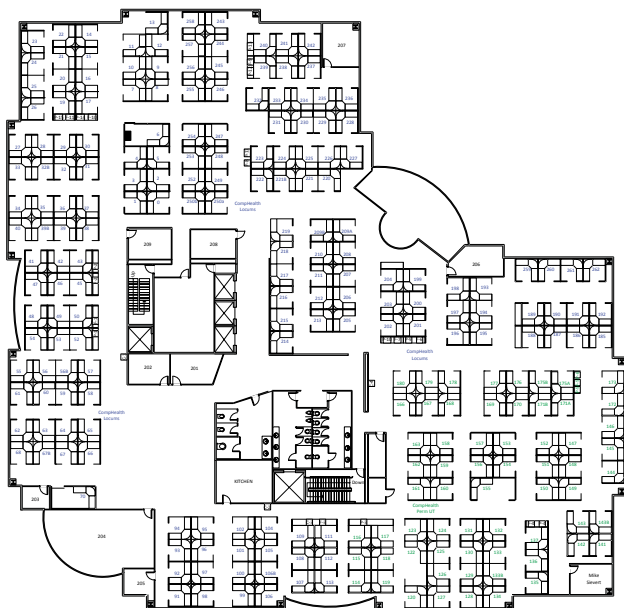
LOBBY RENOVATION CONCEPTS



NEW BUSINESS LOUNGE AND FITNESS CENTER



FOURTH FLOOR - 28,971 RSF



FIFTH FLOOR - 27,360 RSF

