



Accelerating success.

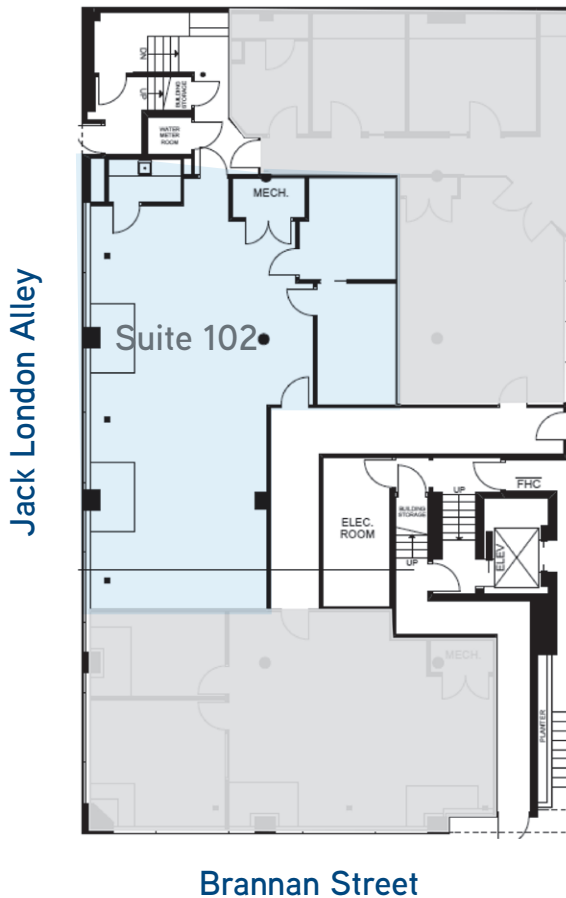
340 BRANNAN STREET

PRIME SOMA LOCATION AT THE ENTRANCE OF SOUTH PARK | SAN FRANCISCO



101 SECOND STREET | 11TH FLOOR | SAN FRANCISCO | CA 94105 | 415 788 3100

1ST FLOOR | SUITE 102 | 1,621 SF



- ◆ 2 enclosures
- ◆ Kitchenette
- ◆ Walking distance to both BART & Caltrain
- ◆ Access to communal roof deck
- ◆ Term through 8/31/2020
- ◆ Asking Rate: \$49 Industrial Gross
- ◆ Available now

Contact

MIKE MCCARTHY

lic 00929942
mike.mccarthy@colliers.com
+1 415 288 7855

MIKE MONROE

lic 00879825
mike.monroe@colliers.com
+1 415 288 7818

BRIAN MCCARTHY

lic 01840990
brian.mccarthy@colliers.com
+1 415 288 7809

MADDIE MEYERSIECK

lic 01961652
maddie.meyersieck@colliers.com
+1 415 288 7866

This document has been prepared by Colliers International for advertising and general information only. Colliers International makes no guarantees, representations or warranties of any kind, expressed or implied, regarding the information including, but not limited to, warranties of content, accuracy and reliability. Any interested party should undertake their own inquiries as to the accuracy of the information. Colliers International excludes unequivocally all inferred or implied terms, conditions and warranties arising out of this document and excludes all liability for loss and damages arising there from. This publication is the copyrighted property of Colliers International and/or its licensor(s). ©2019. All rights reserved.