



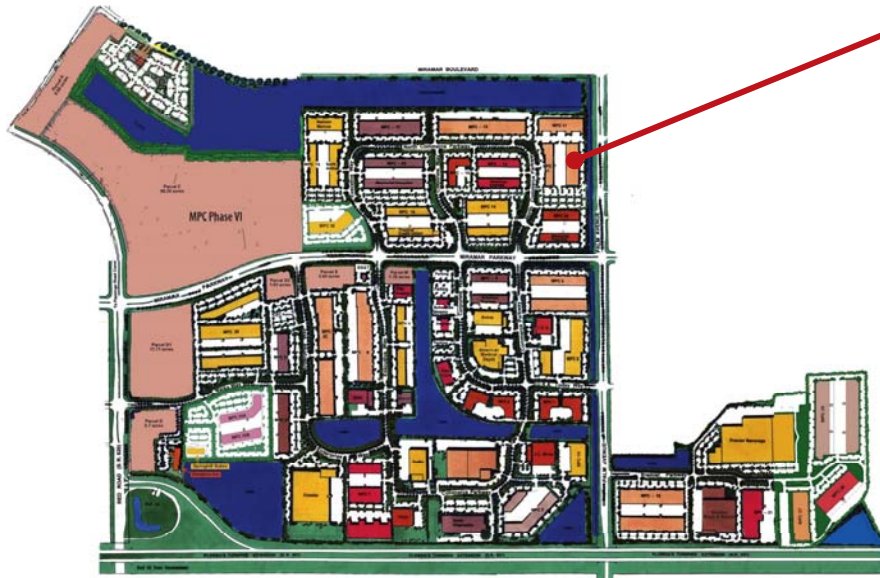
2889 N Commerce Parkway

former iQor (East) space

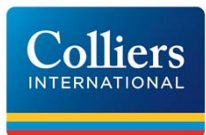
Equidistant from Ft. Lauderdale and Miami, Miramar Park of Commerce is a light industrial park campus in Southwest Broward County fronting the Florida Turnpike just one mile east of the Red Road Interchange.

Since breaking ground in 1984, Sunbeam has developed the Miramar Park of Commerce into South Florida's largest locally-owned and managed Business Park, with over five million square feet of office/service, laboratory, pharmacy, light manufacturing and distribution space.

The world class park is home to 10,000 employees from more than 170 national and international companies. New flex/office space, corporate build-to-suits as well as a limited number of second-generation spaces are available in the Park.



± 26,347 SF Office space
Available January 2018



Jonathan Kingsley
Executive Vice President
jonathan.kingsley@colliers.com
+ 1 954 652 4610

Ryan Goggins
Vice President
ryan.goggins@colliers.com
+ 1 954 652 4613

Copyright © 2017 Colliers International. Information herein has been obtained from sources deemed reliable, however its accuracy cannot be guaranteed. The user is required to conduct their own due diligence and verification.

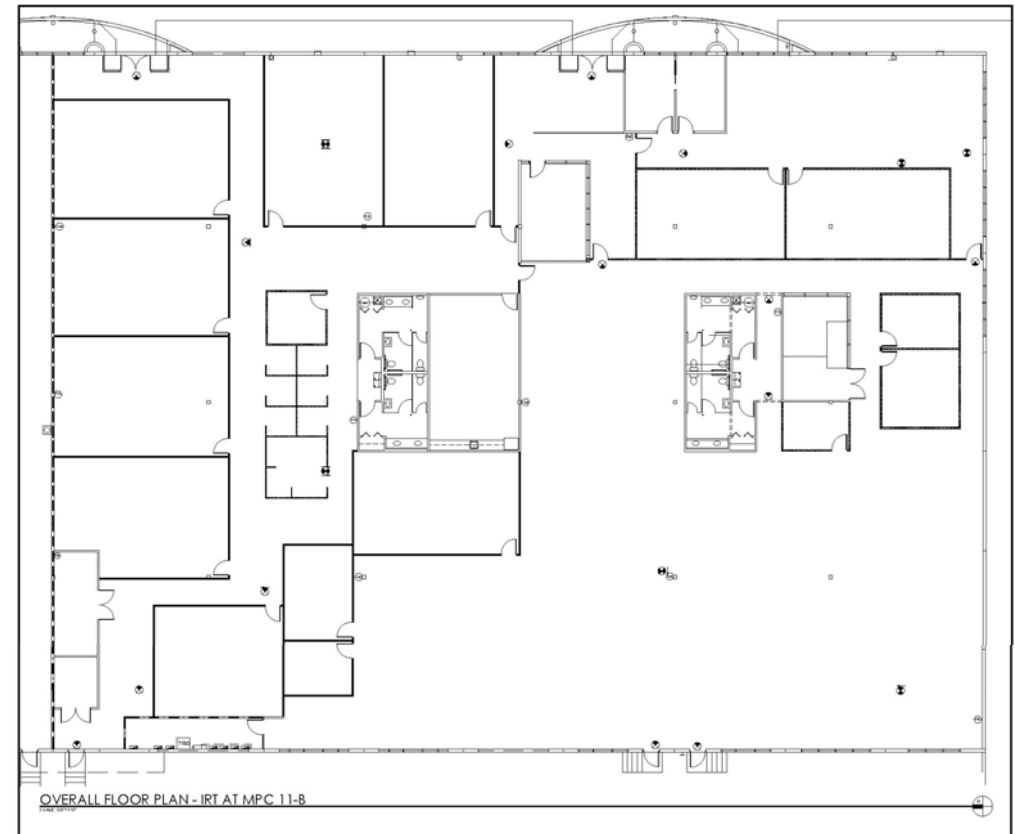


www.miramarflexspace.com

2889 N Commerce Parkway

former iQor (East) space

± 26,347 SF Office space
Available January 2018



- ± 26,347 SF Total
- 100% Office
- Divisible
- Dock High
- 24' Clear
- 5:1,000 parking
- More parking can be made available
- Palm Avenue Frontage
- Building-mounted signage available
- Asking Rate: \$13.95 PSF NNN



Jonathan Kingsley
Executive Vice President
jonathan.kingsley@colliers.com
+ 1 954 652 4610

Ryan Goggins
Vice President
ryan.goggins@colliers.com
+ 1 954 652 4613

Copyright © 2017 Colliers International. Information herein has been obtained from sources deemed reliable, however its accuracy cannot be guaranteed. The user is required to conduct their own due diligence and verification.