



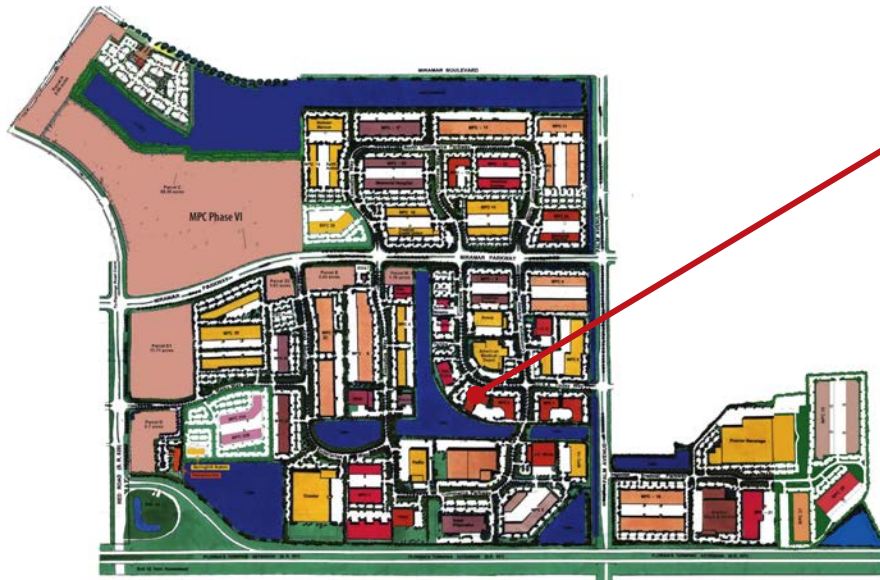
# 10370 USA Today Way

former Topsville space

Equidistant from Ft. Lauderdale and Miami, Miramar Park of Commerce is a light industrial park campus in Southwest Broward County fronting the Florida Turnpike just one mile east of the Red Road Interchange.

Since breaking ground in 1984, Sunbeam has developed the Miramar Park of Commerce into South Florida's largest locally-owned and managed Business Park, with over five million square feet of office/service, laboratory, pharmacy, light manufacturing and distribution space.

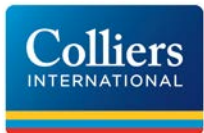
The world class park is home to 10,000 employees from more than 170 national and international companies. New flex/office space, corporate build-to-suits as well as a limited number of second-generation spaces are available in the Park.



± 5,003 SF Office space  
Available May 2018\*



*\*Tenant scheduled to vacate by January 1, 2018*



Jonathan Kingsley  
Executive Vice President  
jonathan.kingsley@colliers.com  
+ 1 954 652 4610

Ryan Goggins  
Vice President  
ryan.goggins@colliers.com  
+ 1 954 652 4613

Copyright © 2017 Colliers International. Information herein has been obtained from sources deemed reliable, however its accuracy cannot be guaranteed. The user is required to conduct their own due diligence and verification.



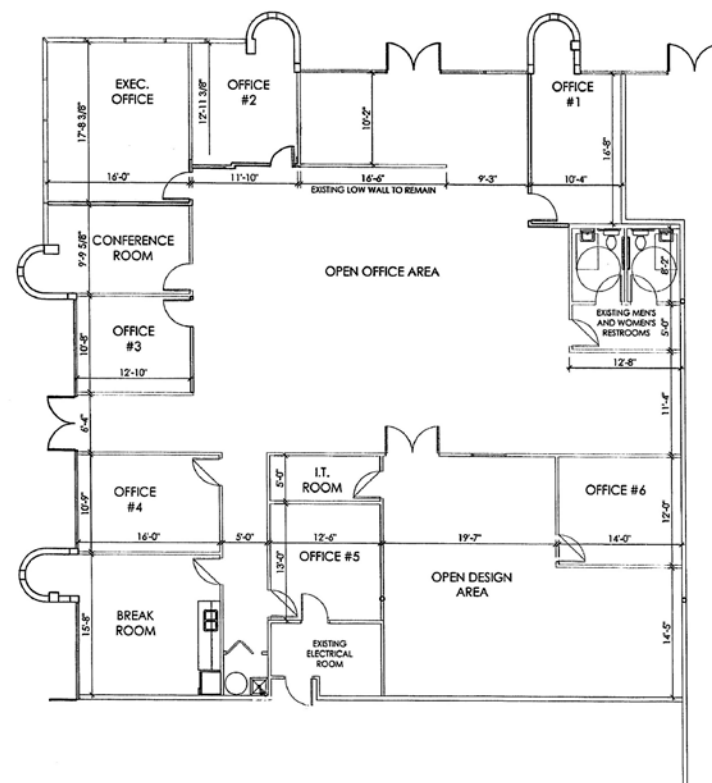
[www.miramarflexspace.com](http://www.miramarflexspace.com)

- ± 5,003 SF Total
- 100% Office
- Can be combined with adjacent space for ± 16,821 SF
- Parking ratio: 4.0:1,000
- More parking can be made available
- 18' Clear
- Dock high
- Asking Rate: \$13.95 PSF NNN

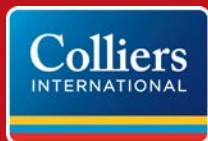
# 10370 USA Today Way

former Topsville space

± 5,003 SF Office space  
Available May 2018\*



\*Tenant scheduled to vacate by January 1, 2018



**Jonathan Kingsley**  
Executive Vice President  
[jonathan.kingsley@colliers.com](mailto:jonathan.kingsley@colliers.com)  
+ 1 954 652 4610

**Ryan Goggins**  
Vice President  
[ryan.goggins@colliers.com](mailto:ryan.goggins@colliers.com)  
+ 1 954 652 4613

Copyright © 2017 Colliers International. Information herein has been obtained from sources deemed reliable, however its accuracy cannot be guaranteed. The user is required to conduct their own due diligence and verification.