

# Retail Space in Uptown

4401 CUTLER AVE. NE, ALBUQUERQUE, NM 87110

Accelerating success.



## Uptown Area > Retail Space

- > Lease Rate: \$13.00/SF
- > Lease Type: Modified Gross
- > Building Size: +/- 4,500 SF
- > Lot Size: .35 Acres
- > Zoning: C-3

### > Available Space:

<u>Suite A</u>	<u>Suite B</u>	<u>Suite A/B</u>	or	<u>Suite A/B</u>
> 1,500 SF	> 1,500 SF	> 2,250 SF		> 3,000 SF

## Building Amenities

- > 10'6" ceiling height
- > Refrigerated air conditioning
- > Building and street signage
- > Big showroom for display

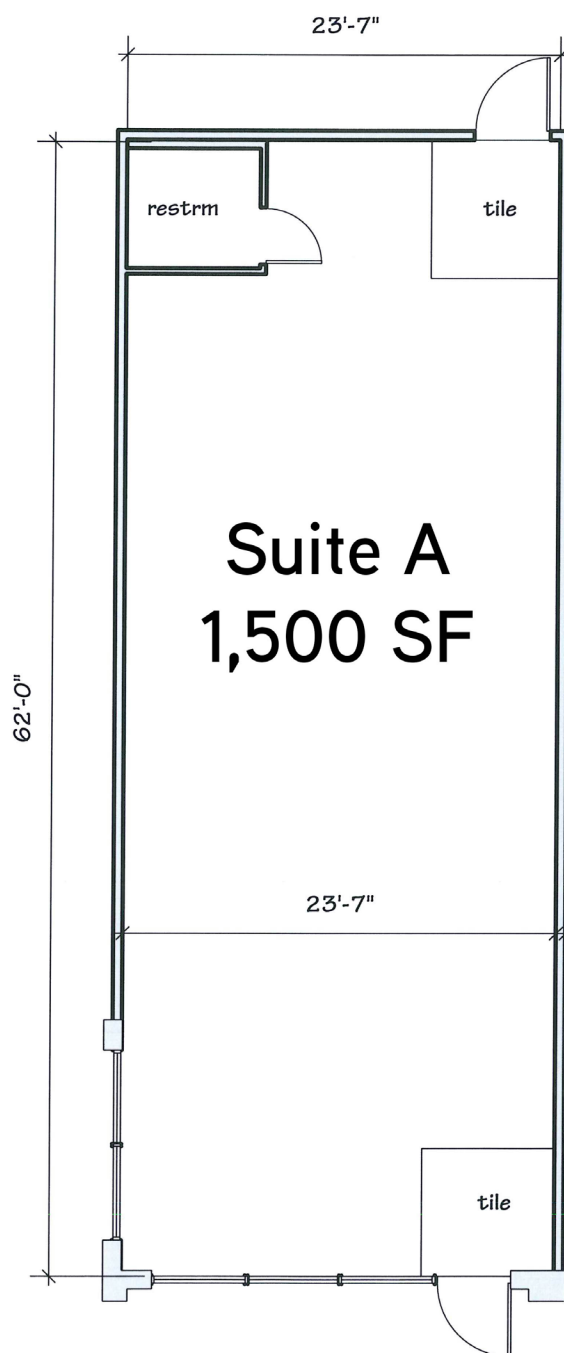
## Contact Us

ED ANLIAN, CCIM  
SENIOR ASSOCIATE  
+1 505 880 7069  
ALBUQUERQUE, NM  
LICENSE #14869  
[ed.anlian@colliers.com](mailto:ed.anlian@colliers.com)

COLLIERS INTERNATIONAL | NM  
MAIN +1 505 883 7676  
5051 Journal Center Blvd. NE, Suite 200  
Albuquerque, NM 87109  
[www.colliers.com](http://www.colliers.com)

# Floor Plan Suite A

4401 CUTLER AVE. NE, ALBUQUERQUE, NM 87110



## Contact Us

ED ANLIAN, CCIM  
SENIOR ASSOCIATE  
+1 505 880 7069  
ALBUQUERQUE, NM  
LICENSE #14869  
[ed.anlian@colliers.com](mailto:ed.anlian@colliers.com)

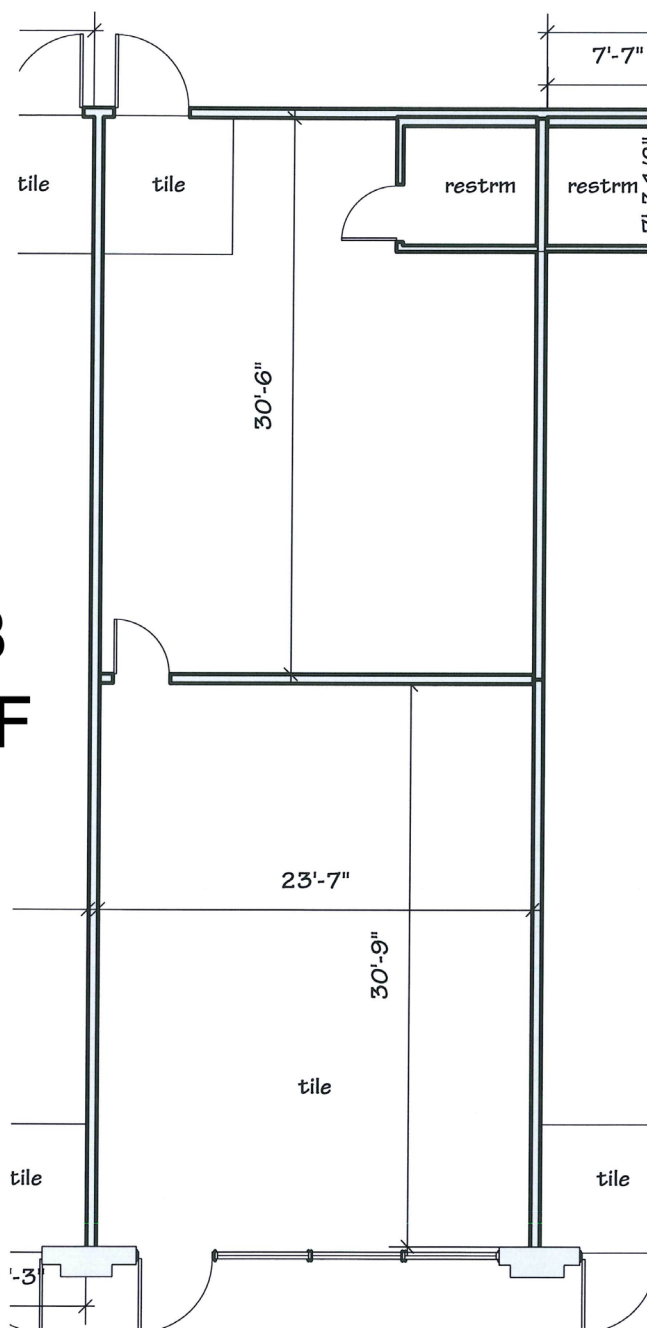
COLLIERS INTERNATIONAL | NM | MAIN +1 505 883 7676 | 5051 Journal Center Blvd. NE, Ste. 200 | Albuquerque, NM 87109 | [www.colliers.com](http://www.colliers.com)

# Floor Plan Suite B

4401 CUTLER AVE. NE, ALBUQUERQUE, NM 87110

Accelerating success.

**Suite B**  
**1,500 SF**



## Contact Us

ED ANLIAN, CCIM  
SENIOR ASSOCIATE  
+1 505 880 7069  
ALBUQUERQUE, NM  
LICENSE #14869  
[ed.anlian@colliers.com](mailto:ed.anlian@colliers.com)

COLLIERS INTERNATIONAL | NM | MAIN +1 505 883 7676 | 5051 Journal Center Blvd. NE, Ste. 200 | Albuquerque, NM 87109 | [www.colliers.com](http://www.colliers.com)

Independently Owned and Operated – The information contained herein was obtained from sources believed reliable; however, Colliers International makes no guarantees, warranties or representations as to the completeness or accuracy thereof. The presentation of this property is submitted subject to errors, omissions, change of price or conditions prior to sale or lease, or withdrawal without notice.

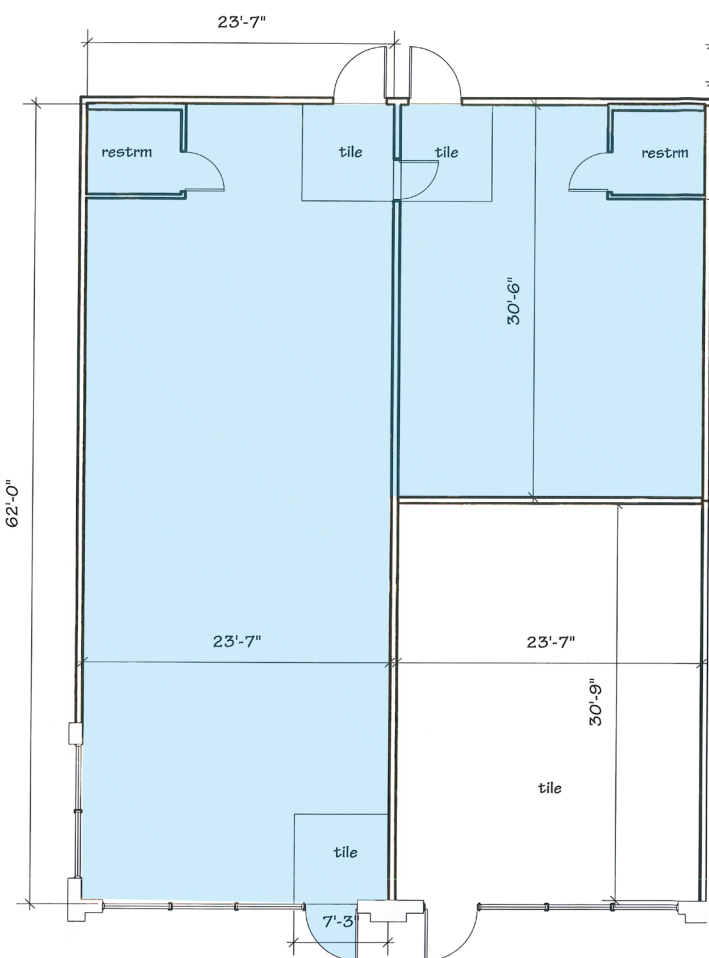
FOR LEASE > RETAIL SPACE



# Floor Plan Suite A/B Options

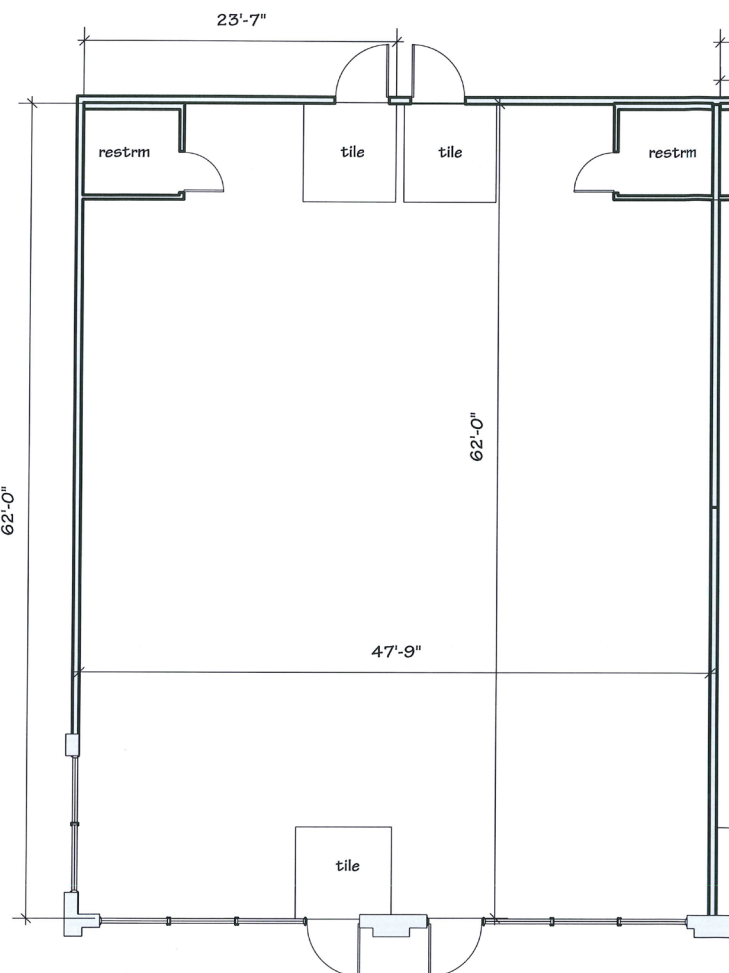
4401 CUTLER AVE. NE, ALBUQUERQUE, NM 87110

Accelerating success.



Suite A/B - 2,250 SF

OR



Suite A/B - 3,000 SF

## Contact Us

ED ANLIAN, CCIM  
SENIOR ASSOCIATE  
+1 505 880 7069  
ALBUQUERQUE, NM  
LICENSE #14869  
[ed.anlian@colliers.com](mailto:ed.anlian@colliers.com)

COLLIERS INTERNATIONAL | NM | MAIN +1 505 883 7676 | 5051 Journal Center Blvd. NE, Ste. 200 | Albuquerque, NM 87109 | [www.colliers.com](http://www.colliers.com)

*Independently Owned and Operated* – The information contained herein was obtained from sources believed reliable; however, Colliers International makes no guarantees, warranties or representations as to the completeness or accuracy thereof. The presentation of this property is submitted subject to errors, omissions, change of price or conditions prior to sale or lease, or withdrawal without notice.



FOR LEASE > RETAIL SPACE

Colliers  
INTERNATIONAL

# Photos

4401 CUTLER AVE. NE ALBUQUERQUE, NM 87110

Accelerating success.



## Contact Us

ED ANLIAN, CCIM  
SENIOR ASSOCIATE  
+1 505 880 7069  
ALBUQUERQUE, NM  
LICENSE #14869  
[ed.anlian@colliers.com](mailto:ed.anlian@colliers.com)

COLLIERS INTERNATIONAL | NM | MAIN +1 505 883 7676 | 5051 Journal Center Blvd. NE, Ste. 200 | Albuquerque, NM 87109 | [www.colliers.com](http://www.colliers.com)

*Independently Owned and Operated* – The information contained herein was obtained from sources believed reliable; however, Colliers International makes no guarantees, warranties or representations as to the completeness or accuracy thereof. The presentation of this property is submitted subject to errors, omissions, change of price or conditions prior to sale or lease, or withdrawal without notice.



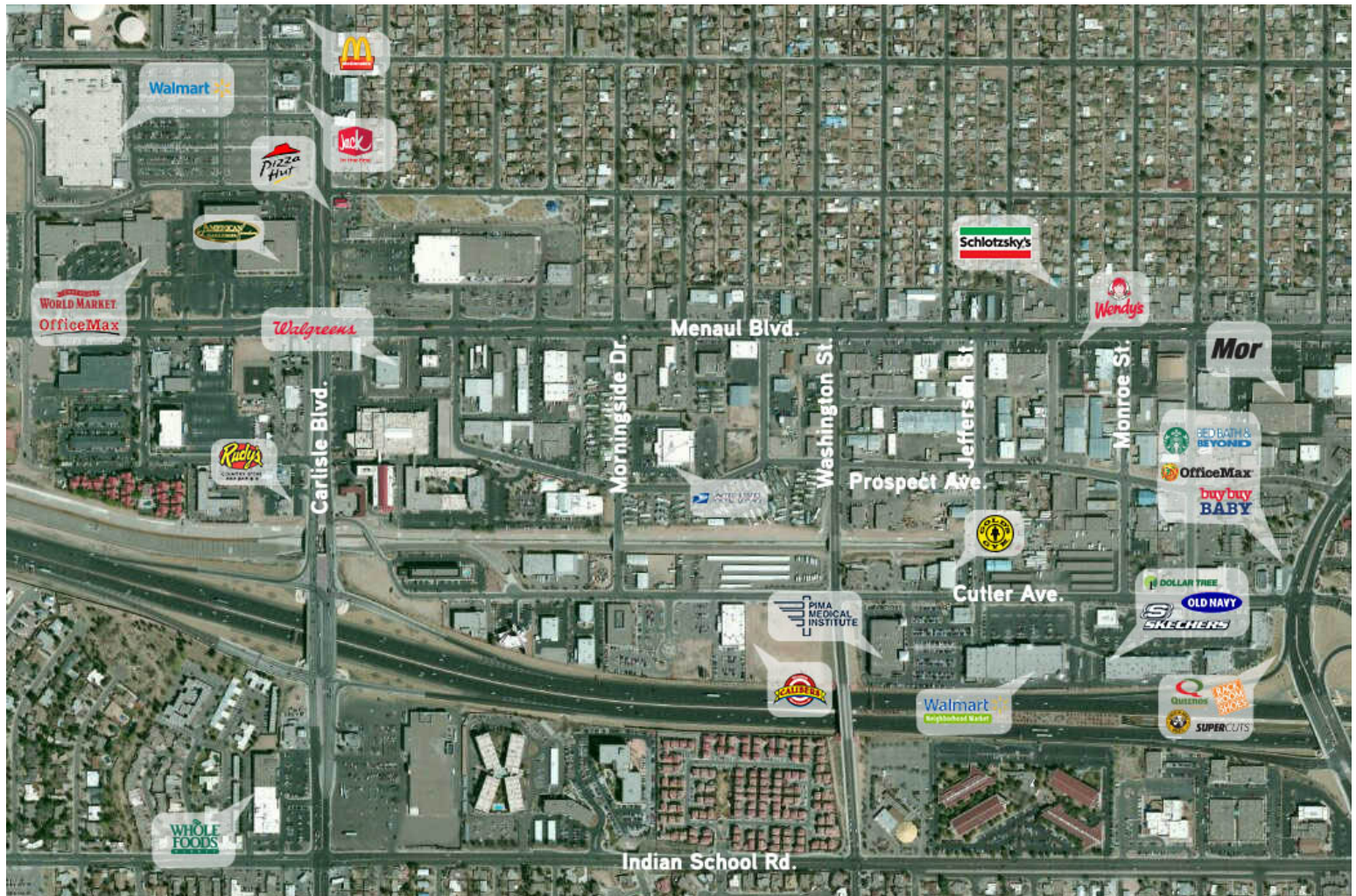
FOR LEASE > RETAIL SPACE

Colliers  
INTERNATIONAL

# Aerial

4401 CUTLER AVE. NE, ALBUQUERQUE, NM 87110

Accelerating success.



## Contact Us

ED ANLIAN, CCIM  
SENIOR ASSOCIATE  
+1 505 880 7069  
ALBUQUERQUE, NM  
LICENSE #14869  
[ed.anlian@colliers.com](mailto:ed.anlian@colliers.com)

COLLIERS INTERNATIONAL | NM | MAIN +1 505 883 7676 | 5051 Journal Center Blvd. NE, Ste. 200 | Albuquerque, NM 87109 | [www.colliers.com](http://www.colliers.com)

*Independently Owned and Operated* – The information contained herein was obtained from sources believed reliable; however, Colliers International makes no guarantees, warranties or representations as to the completeness or accuracy thereof. The presentation of this property is submitted subject to errors, omissions, change of price or conditions prior to sale or lease, or withdrawal without notice.