

FOR LEASE > SUITES RANGING FROM 1,099± SF - 3,704± SF

# Second Floor Office Suites

Colliers  
INTERNATIONAL

3420 FOSTORIA WAY, DANVILLE, CA

NEW COMMON AREA FINISHES



## Features

- > Walk to retail and hotels
- > Superior access to I-680 (8 miles from I-580/I-680 interchange)
- > Located just down the street from Costco
- > Elevator access to second floor
- > ±3/1,000 parking ratio
- > \$1.85 Industrial Gross

## Second Floor Office Suites

**SUITE 200** - 3,465± SF available now

- > Reception, six private offices, conference room and bullpen

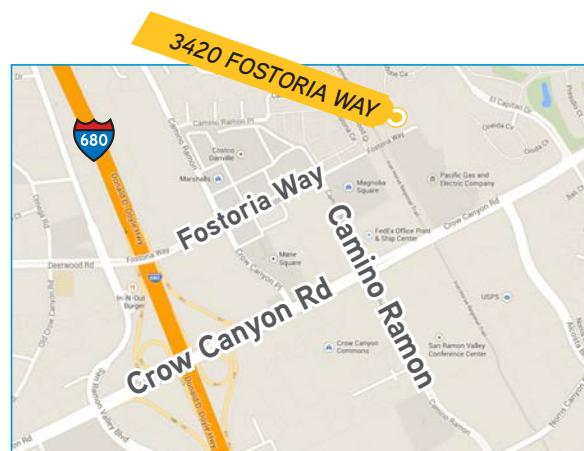
**SUITE 210\*** - 2,605± SF available now

- > Reception, four private offices, kitchen and bullpen

**SUITE 205\*** - 1,099± SF available now

- > Two private offices and open bullpen

\*Suites 210 & 205 can be combined for a total of 3,704± SF



IAN THOMAS  
+1 925 227 6246  
i.thomas@colliers.com  
CA License No. 01279455

JASON CHANDLER  
+1 925 227 6224  
jason.chandler@colliers.com  
CA License No. 01394441

COLLIERS INTERNATIONAL  
3825 Hopyard Rd. Suite 195  
Pleasanton, CA 94588  
www.colliers.com



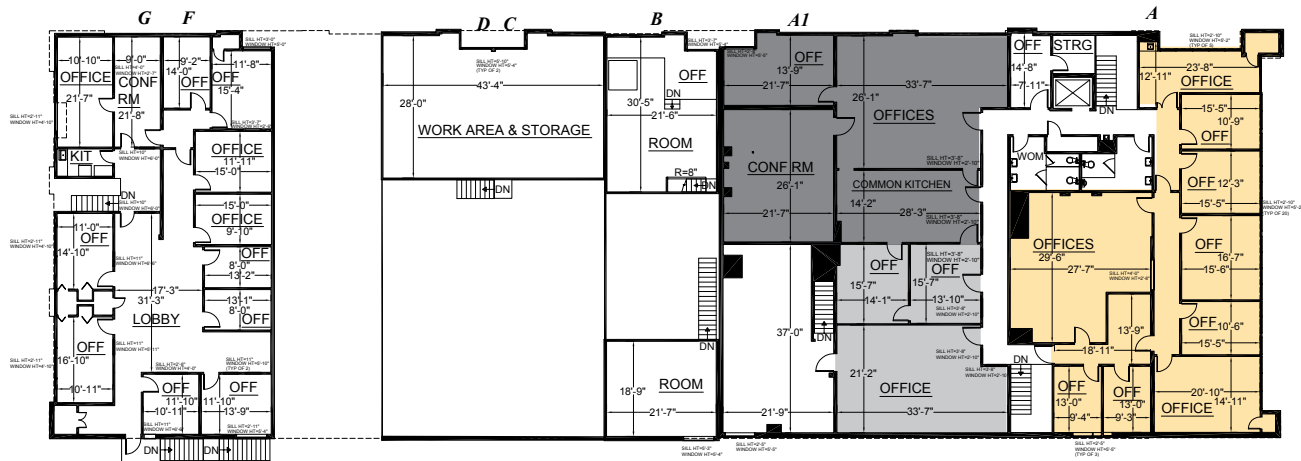
FOR LEASE > SUITES RANGING FROM 1,099± SF - 3,704± SF

# Second Floor Office Suites



3420 FOSTORIA WAY, DANVILLE, CA

## SECOND FLOOR – OFFICE SUITES (ELEVATOR ACCESS)



- = SUITE 200
- = SUITE 210
- = SUITE 205



IAN THOMAS  
+1 925 227 6246  
i.thomas@colliers.com  
CA License No. 01279455

JASON CHANDLER  
+1 925 227 6224  
jason.chandler@colliers.com  
CA License No. 01394441

COLLIERS INTERNATIONAL  
3825 Hopyard Rd. Suite 195  
Pleasanton, CA 94588  
www.colliers.com