

FOR LEASE > ±2,400 SF

5000 East Second Street

BENICIA, CALIFORNIA



PROPERTY HIGHLIGHTS

- > Corner Unit
- > Office Size: 300 sq. feet with wall HVAC
- > Warehouse Size: 2,100 square feet
- > Clear: 16' – 18'
- > Power: 100 Amps, 208 Volts, 3 Phase
- > Parking 7 Total Spaces
- > Sprinkler System
- > Insulated Ceiling
- > Easy access – I-680 & I-780
- > Nice hillside & bay view from the front office
- > Ideal for R&D / Light Industrial
- > Potential for small yard



The information furnished has been obtained from sources we deem reliable and is submitted subject to errors, omissions and changes. Although Colliers International has no reason to doubt its accuracy, we do not guarantee it. All information should be verified by the recipient prior to lease, purchase, exchange, or execution of legal documents. © 2017 Colliers International

BRET DEMARTINI, CCIM

+1 707 863 8397

bret.demartini@colliers.com

CA License No. 00853110

CHRIS PETRINI

+1 707 863 8387

chris.petrini@colliers.com

CA License No. 01020505

COLLIERS INTERNATIONAL

360 Campus Lane, Suite 101

Fairfield, CA 94534

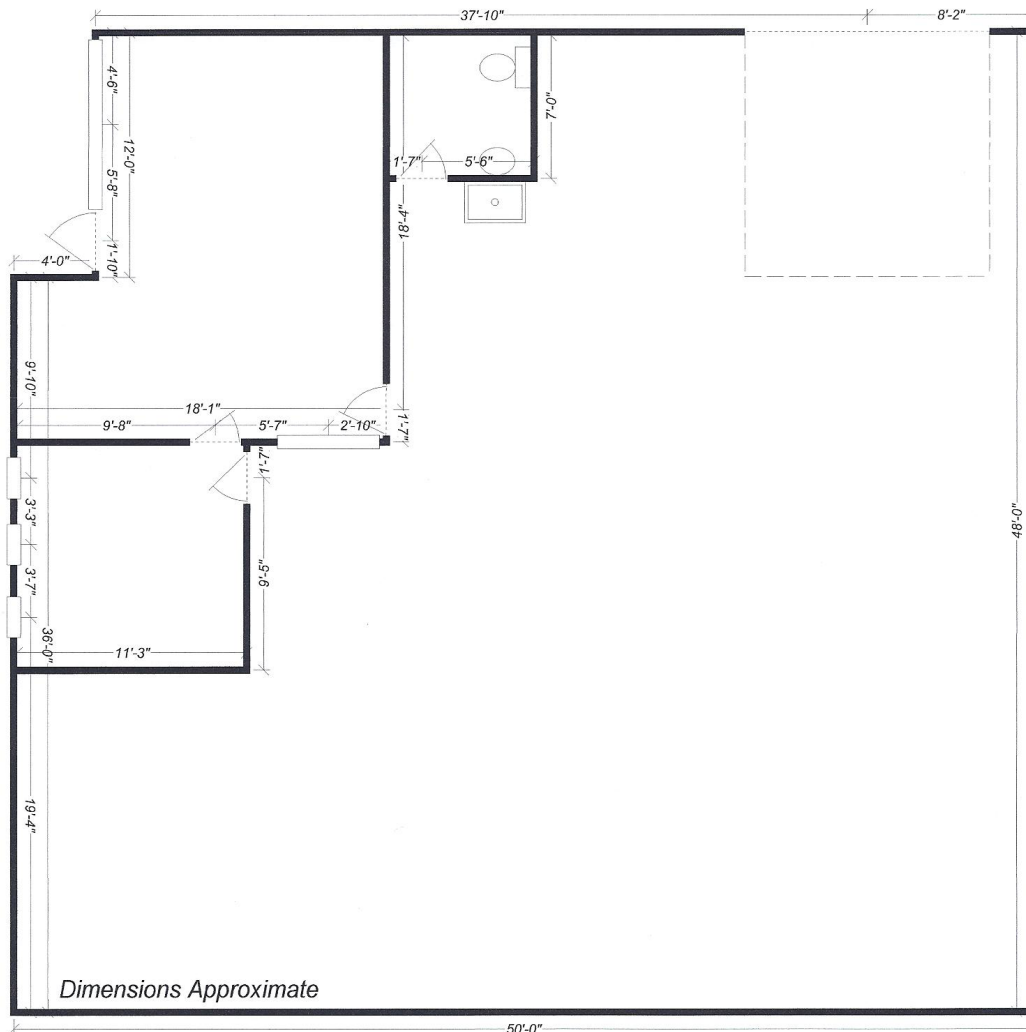
www.colliers.com

FOR LEASE > ±2,400 SF



5000 East Second Street

BENICIA, CALIFORNIA



The information furnished has been obtained from sources we deem reliable and is submitted subject to errors, omissions and changes. Although Colliers International has no reason to doubt its accuracy, we do not guarantee it. All information should be verified by the recipient prior to lease, purchase, exchange, or execution of legal documents. © 2017 Colliers International

BRET DEMARTINI, CCIM
+1 707 863 8397
bret.demartini@colliers.com
CA License No. 00853110

CHRIS PETRINI
+1 707 863 8387
chris.petrini@colliers.com
CA License No. 01020505

COLLIERS INTERNATIONAL
360 Campus Lane, Suite 101
Fairfield, CA 94534
www.colliers.com