

**FOR
LEASE**

AIRPORT BUSINESS CENTER I

2141 W AIRPORT WAY, STE 500 | BOISE, ID



PROPERTY INFORMATION

Property Type:	Office
Building Size:	22,002 SF
Space Available:	5,630 SF
Parking:	4/1000
Lease Type:	NNN
Lease Rate:	\$12/PSF

HIGHLIGHTS

- » Valley-wide views conveniently located near I-84
- » Fiber wired to building
- » Adjacent to the Boise Airport, hotels and restaurants
- » Server room with a dedicated 10 ton cooling unit and raised floors
- » Battery room with dry fire suppression
- » Signage available

Colliers
INTERNATIONAL

LEW MANGLOS, MBA, CCIM, SIOR
208 472 2841
lew.manglos@colliers.com

JAMIE ANDERSON
208 472 2842
jamie.anderson@colliers.com

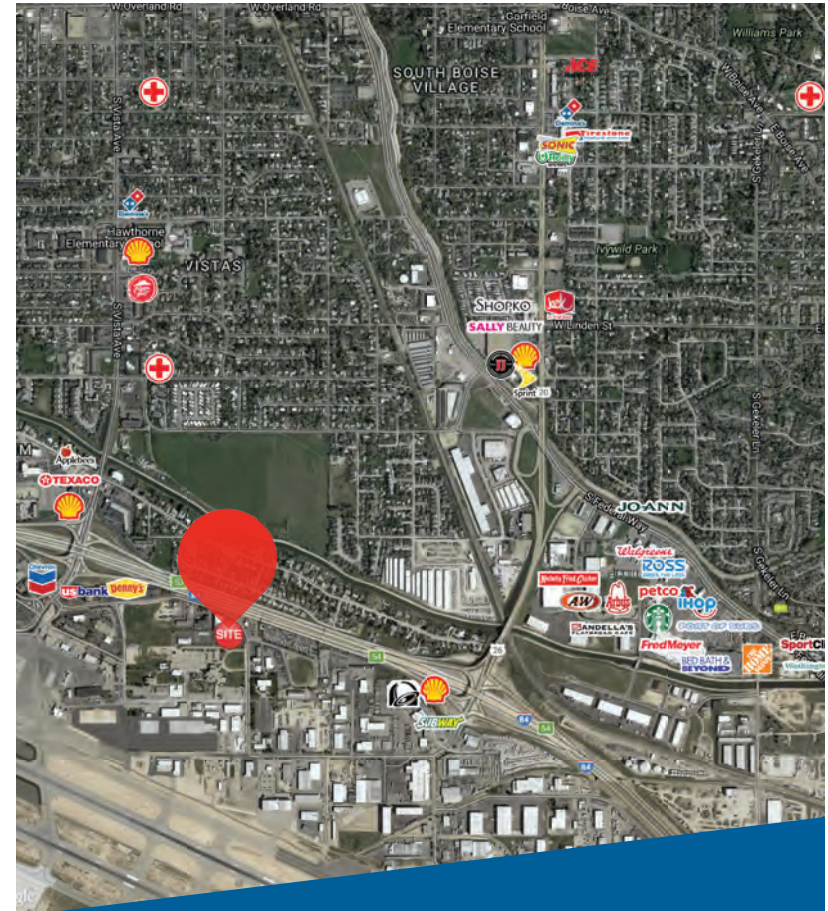
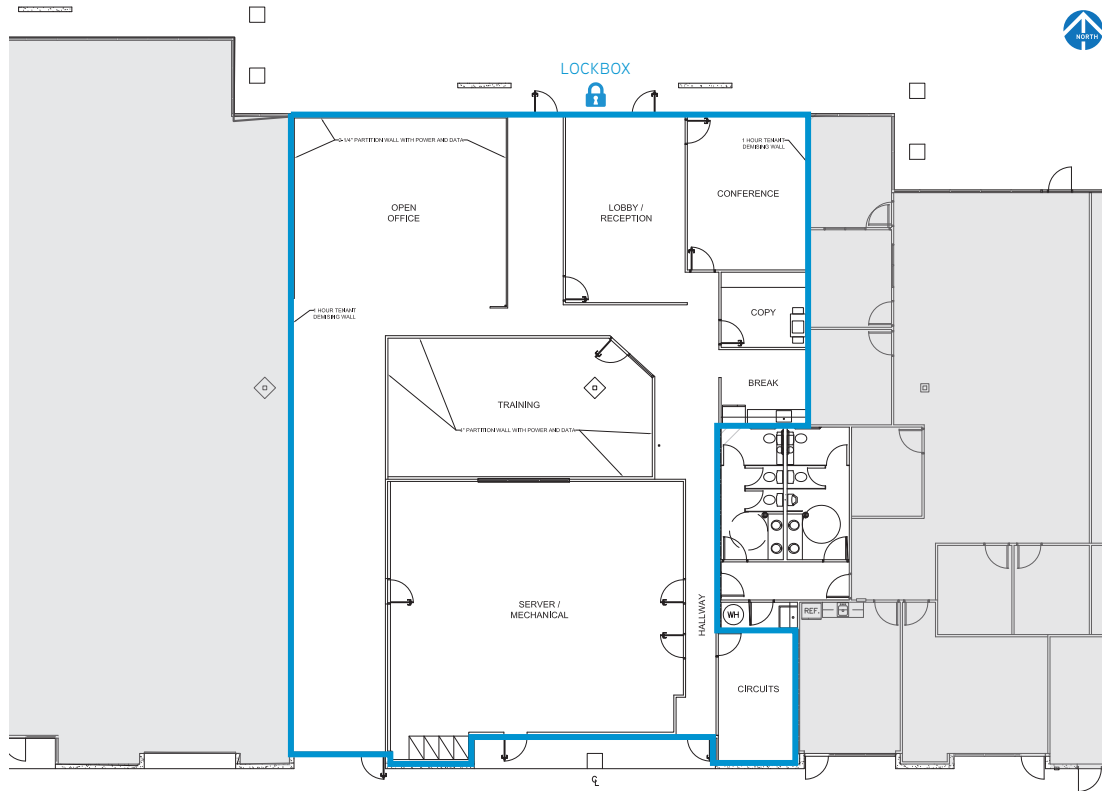
Colliers International Idaho | 755 West Front Street, Suite 300 Boise, Idaho 83702 | www.colliers.com/boise | 208 345 9000

This document has been prepared by Colliers International for advertising and general information only. Colliers International makes no guarantees, representations or warranties of any kind, expressed or implied, regarding the information including, but not limited to, warranties of content, accuracy and reliability. Any interested party should undertake their own inquiries as to the accuracy of the information. Colliers International excludes unequivocally all inferred or implied terms, conditions and warranties arising out of this document and excludes all liability for loss and damages arising there from. This publication is the copyrighted property of Colliers International and/or its licensor(s). ©2016. All rights reserved

**FOR
LEASE**

AIRPORT BUSINESS CENTER I

2141 W AIRPORT WAY, STE 500 | BOISE, ID



LEW MANGLOS, MBA, CCIM, SIOR
208 472 2841
lew.manglos@colliers.com

JAMIE ANDERSON
208 472 2842
jamie.anderson@colliers.com