


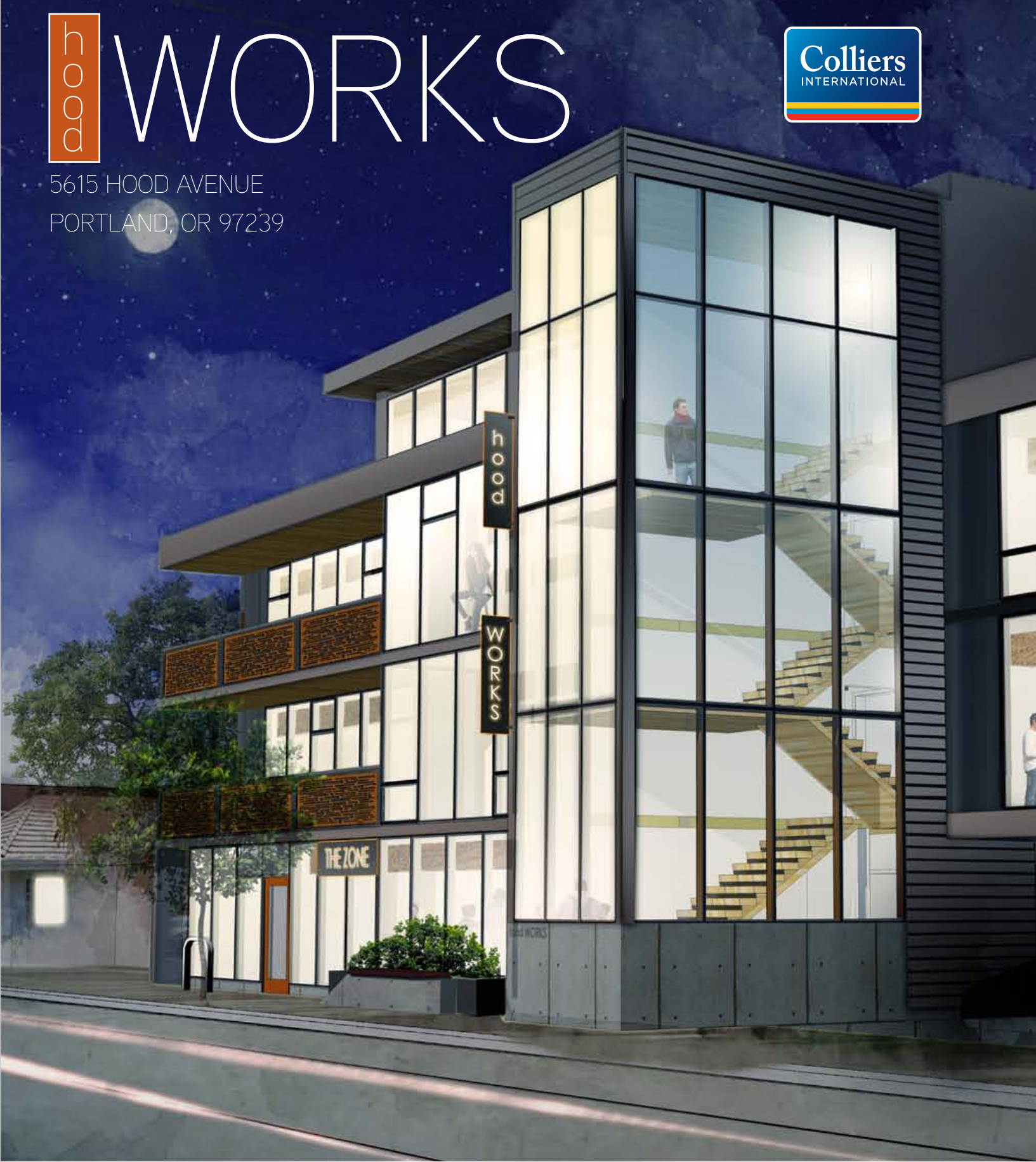




JOHNS LANDING TO...			
NE Portland (Portland Trail Blazers)	10 minutes	4.4 miles	30 minutes
Downtown (Portland Timbers)	13 minutes	4.0 miles	34 minutes
Brewtown USA (Pearl District)	14 minutes	4.7 miles	36 minutes



hoodWORKS

5615 HOOD AVENUE
PORTLAND, OR 97239

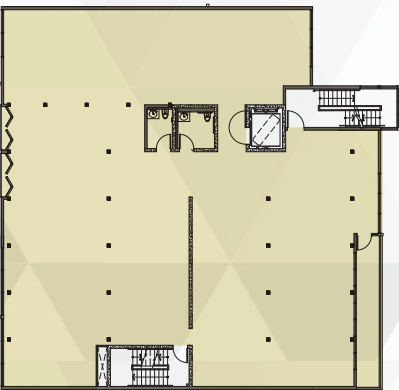


CREATIVE OFFICE SPACE IN THE JOHN'S LANDING NEIGHBORHOOD OF PORTLAND
Office & Retail Available Late Summer 2018

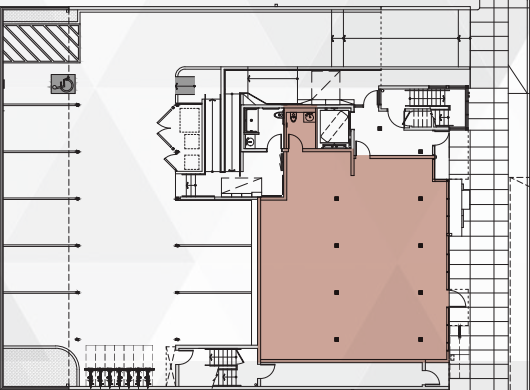


New Creative Office Space in Vibrant John's Landing

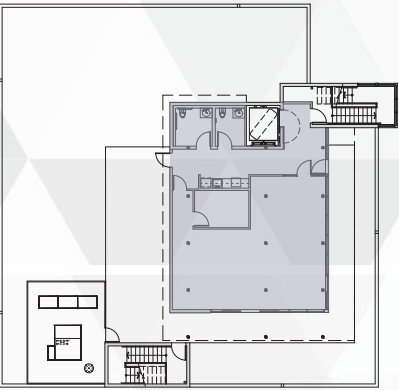
- ◆ 1,730 SF Premium Retail or Office Space on the 1st Floor
- ◆ 5,800 SF Premium Office Space on the 2nd and 3rd Floors
- ◆ 1,372 SF Premium Office Space on the Penthouse Level
- ◆ One block off of Macadam Avenue; three bus lines within walking distance; building is biking distance from downtown
- ◆ \$29.00 - \$31.00 PSF NNN
- ◆ 10 on-site parking spaces
- ◆ Cross laminated timber construction



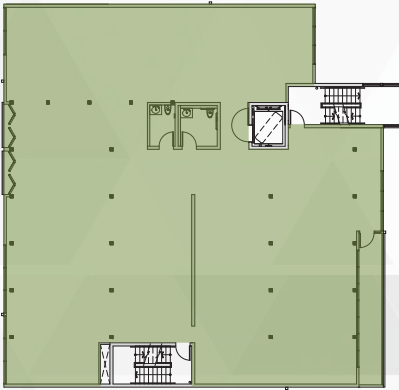
LEVEL 2 5,735 SF



LEVEL 1 1,780 SF



PENTHOUSE 1,372 SF



LEVEL 3 5,735 SF

Delivering Late Summer 2018



CARTER BEYL
503 542 5892
carter.beyl@colliers.com

JT SAND
503 542 5896
jt.sand@colliers.com