

Cypress Creek Town Center

Street Retail

Contact us:

Lisa McCaffrey
 Executive Managing Director
 Retail Services
 +1 813 871 8519
 lisa.mccaffrey@colliers.com

State Road 56 & Wesley Chapel Blvd | Wesley Chapel | FL 33545

FEATURES

- Pre-leasing multi-tenant street retail
- 1,300 - 5,000 SF available
- Average household income of \$99,937 within 5 miles
- 64,500 cars per day on State Road 56
- Join Chuy's, Bahama Breeze, Earth Fare, Home Goods and more

Contact us:
Lisa McCaffrey
 Executive Managing Director
 Retail Services
 +1 813 871 8519
 lisa.mccaffrey@colliers.com



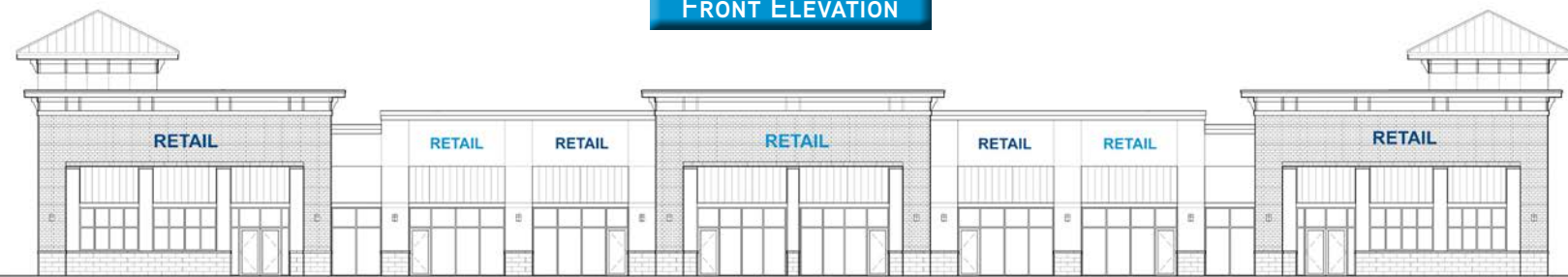
Accelerating success.



Colliers International
 4830 W. Kennedy Blvd | Suite 300
 Tampa, FL 33609

This document has been prepared by Colliers International for advertising and general information only. Colliers International makes no guarantees, representations or warranties of any kind, expressed or implied, regarding the information including, but not limited to, warranties of content, accuracy and reliability. Any interested party should undertake their own inquiries as to the accuracy of the information. Colliers International excludes unequivocally all inferred or implied terms, conditions and warranties arising out of this document and excludes all liability for loss and damages arising there from. This publication is the copyrighted property of Colliers International and/or its licensor(s). ©2017. All rights reserved.

FRONT ELEVATION



STREET VIEW

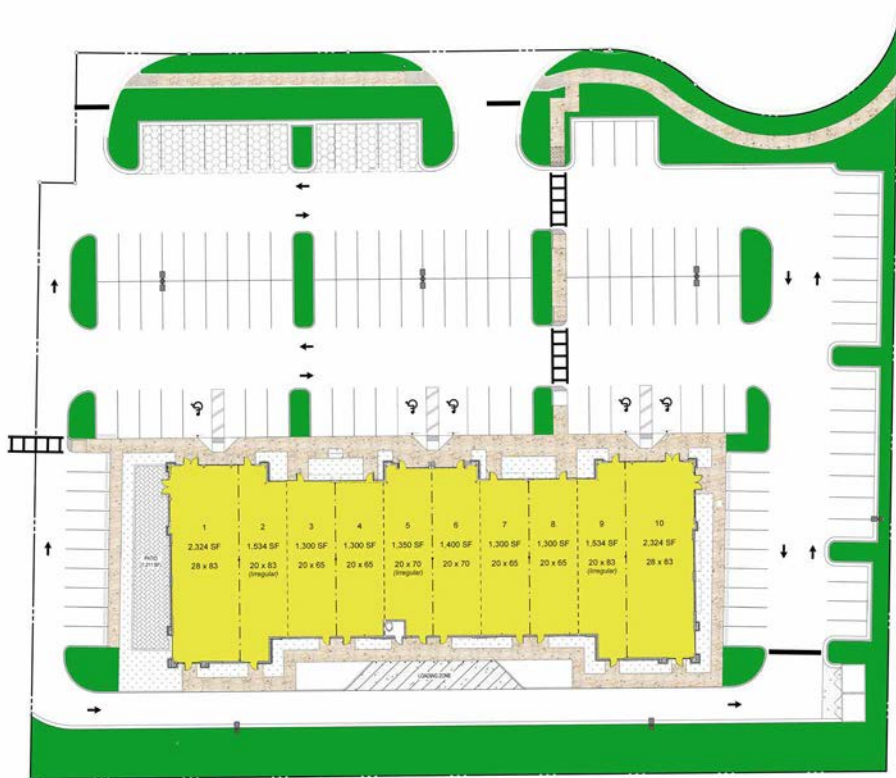


Availabilities

Suite	SF	Dimensions
1	2,324	28 x 83
2	1,534	20 x 83 (irregular)
3	1,300	20 x 65
4	1,300	20 x 65
5	1,350	20 x 70 (irregular)
6	1,400	20 x 70
7	1,300	20 x 65
8	1,300	10 x 65
9	1,534	20 x 83 (irregular)
10	2,324	28 x 83

Demographics

	5 Miles	7 Miles	15 Min DT
Total Population	112,660	192,966	250,090
Daytime Population	89,990	144,093	206,048
Average Household Income	\$99,937	\$102,164	\$85,931
Median Age	37.8	37.8	35.6



SR 56

- Endcap up to 3,858 SF
- Shop spaces from 1,300 SF
- Excellent visibility from SR 56
- Going home side of SR 56

