

Buildings ranging from  
±15,221 SF - ±39,321 SF

**FOR LEASE**  
**INDUSTRIAL  
PARK**

STATESVILLE, NC



**INDUSTRIAL PARK HIGHLIGHTS**

- Iredell County warehouse leasing opportunities in close proximity to I-40 & I-77
- Five Spaces Available ranging from ±15,221 - ± 39,321 SF
- All spaces equipped with dock doors
- Zoned Light Industrial

**PARK AVAILABILITIES**

Combined ± 144,252 SF Industrial Park

- 1701 Gregory Rd ± 39,321 SF
- 1705 Gregory Rd ± 35,780 SF
- 1907 Clayton St ± 34,930 SF
- 1909 Clayton St ± 19,000 SF
- 1860 Weing St ± 15,221 SF

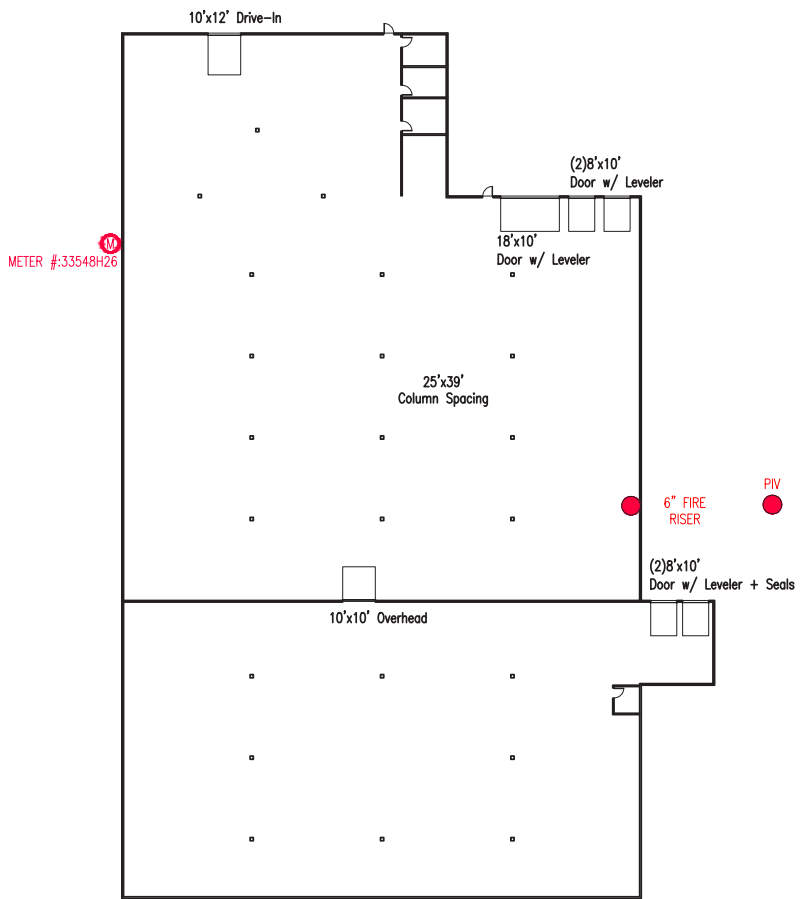
**Colliers**

**JOHN ELLIS**  
Senior Associate  
+1 704 409 2914  
john.ellis@colliers.com

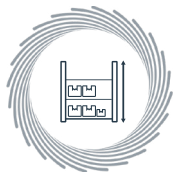
**JD ALLEN**  
Senior Associate  
+1 704 409 2368  
jd.allen@colliers.com

**ROB SPEIR, SIOR**  
Executive Vice President  
+1 704 409 2370  
rob.speir@colliers.com

**GRANT MILLER, SIOR**  
Vice Chair  
+1 704 409 2364  
grant.miller@colliers.com



**PROPERTY FEATURES**



**CLEAR HEIGHT**  
17' - 20'



**SPRINKLERS**  
100% Wet



**SQUARE FEET**  
39,321 SF



**DOCKS**  
1 Drive-In Door  
6 Dock High Doors



**ZONING**  
Light Industrial

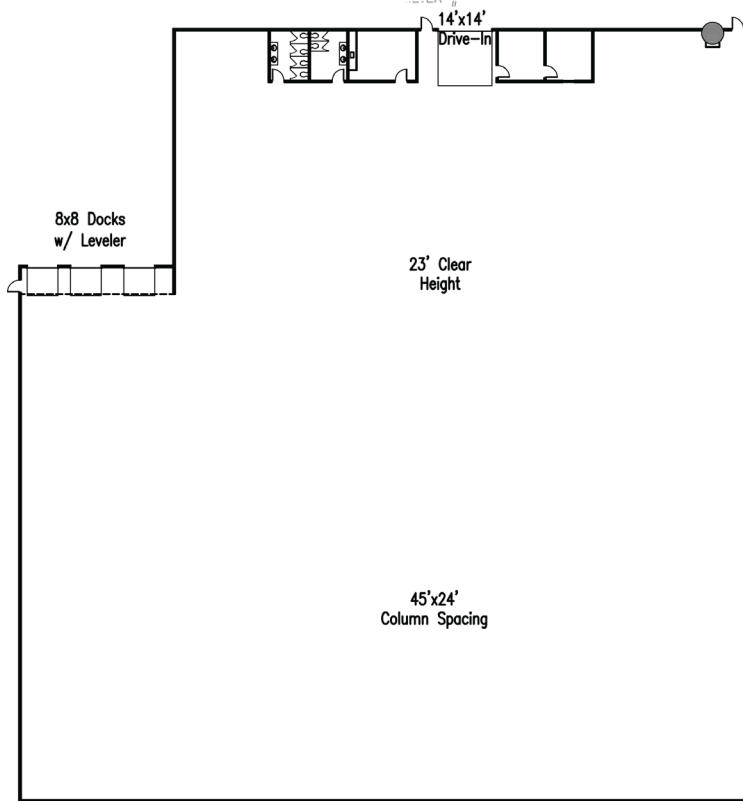
**JOHN ELLIS**  
Senior Associate  
+1 704 409 2914  
john.ellis@colliers.com

**JD ALLEN**  
Senior Associate  
+1 704 409 2368  
jd.allen@colliers.com

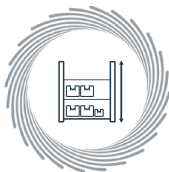
**ROB SPEIR, SIOR**  
Executive Vice President  
+1 704 409 2370  
rob.speir@colliers.com

**GRANT MILLER, SIOR**  
Vice Chair  
+1 704 409 2364  
grant.miller@colliers.com

1705 GREGORY RD



PROPERTY FEATURES



**CLEAR HEIGHT**  
23'



**SPRINKLERS**  
100% Wet



**SQUARE FEET**  
35,780 SF



**DOCKS**  
1 Large Drive-In Doors  
3 Dock High Doors



**ZONING**  
Light Industrial

**JOHN ELLIS**  
Senior Associate  
+1 704 409 2914  
john.ellis@colliers.com

**JD ALLEN**  
Senior Associate  
+1 704 409 2368  
jd.allen@colliers.com

**ROB SPEIR, SIOR**  
Executive Vice President  
+1 704 409 2370  
rob.speir@colliers.com

**GRANT MILLER, SIOR**  
Vice Chair  
+1 704 409 2364  
grant.miller@colliers.com



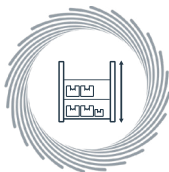
1909 CLAYTON ST



 METER #: 55839172

 Meter #: 33548438

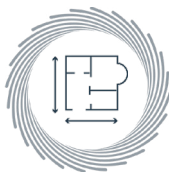
**PROPERTY FEATURES**



**CLEAR HEIGHT**  
18'8" at center  
13'5" at eaves



**SPRINKLERS**  
100% Wet



**SQUARE FEET**  
19,000 SF



**DOCKS**  
1 Dock-High  
Doors with levelers  
3 Drive-in Door



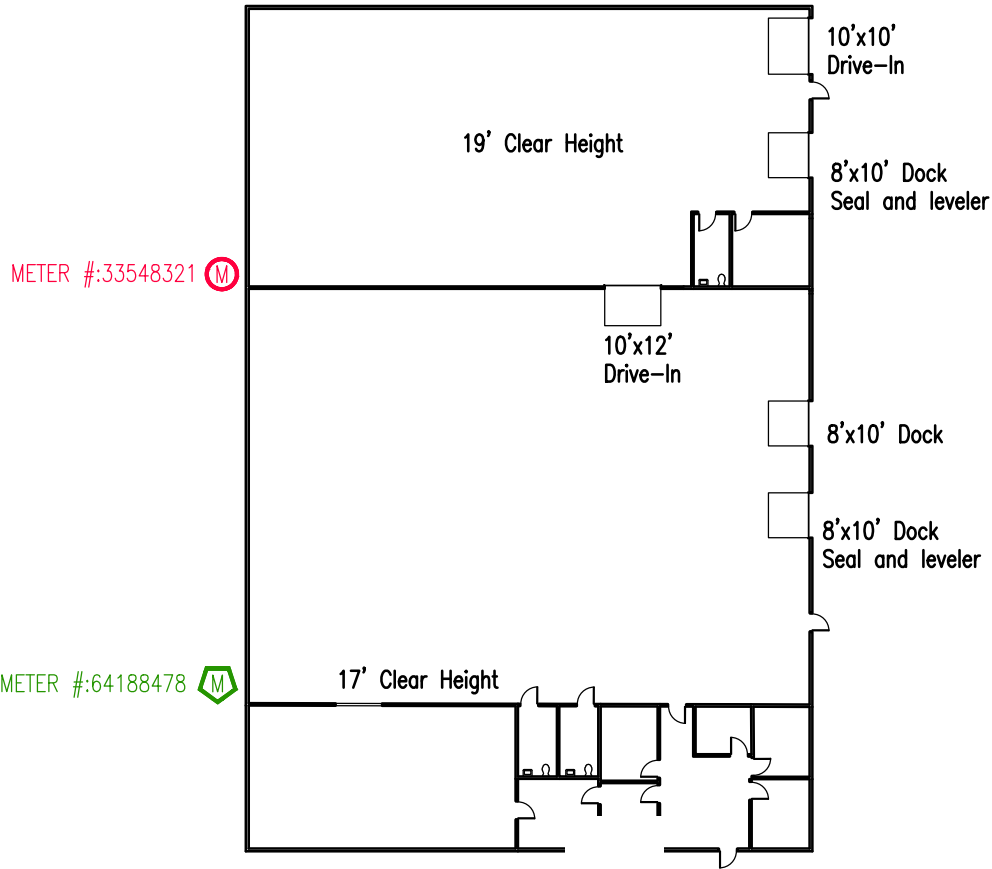
**ZONING**  
Light Industrial

**JOHN ELLIS**  
Senior Associate  
+1 704 409 2914  
john.ellis@colliers.com

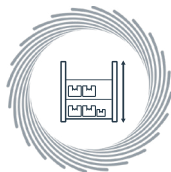
**JD ALLEN**  
Senior Associate  
+1 704 409 2368  
jd.allen@colliers.com

**ROB SPEIR, SIOR**  
Executive Vice President  
+1 704 409 2370  
rob.speir@colliers.com

**GRANT MILLER, SIOR**  
Vice Chair  
+1 704 409 2364  
grant.miller@colliers.com



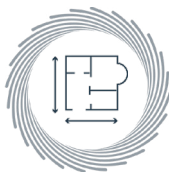
**PROPERTY FEATURES**



**CLEAR HEIGHT**  
17' - 19'



**SPRINKLERS**  
100% Wet



**SQUARE FEET**  
15,221 SF



**DOCKS**  
(1) 10' x 10' Drive-In  
(3) 8' x 10' Dock Doors



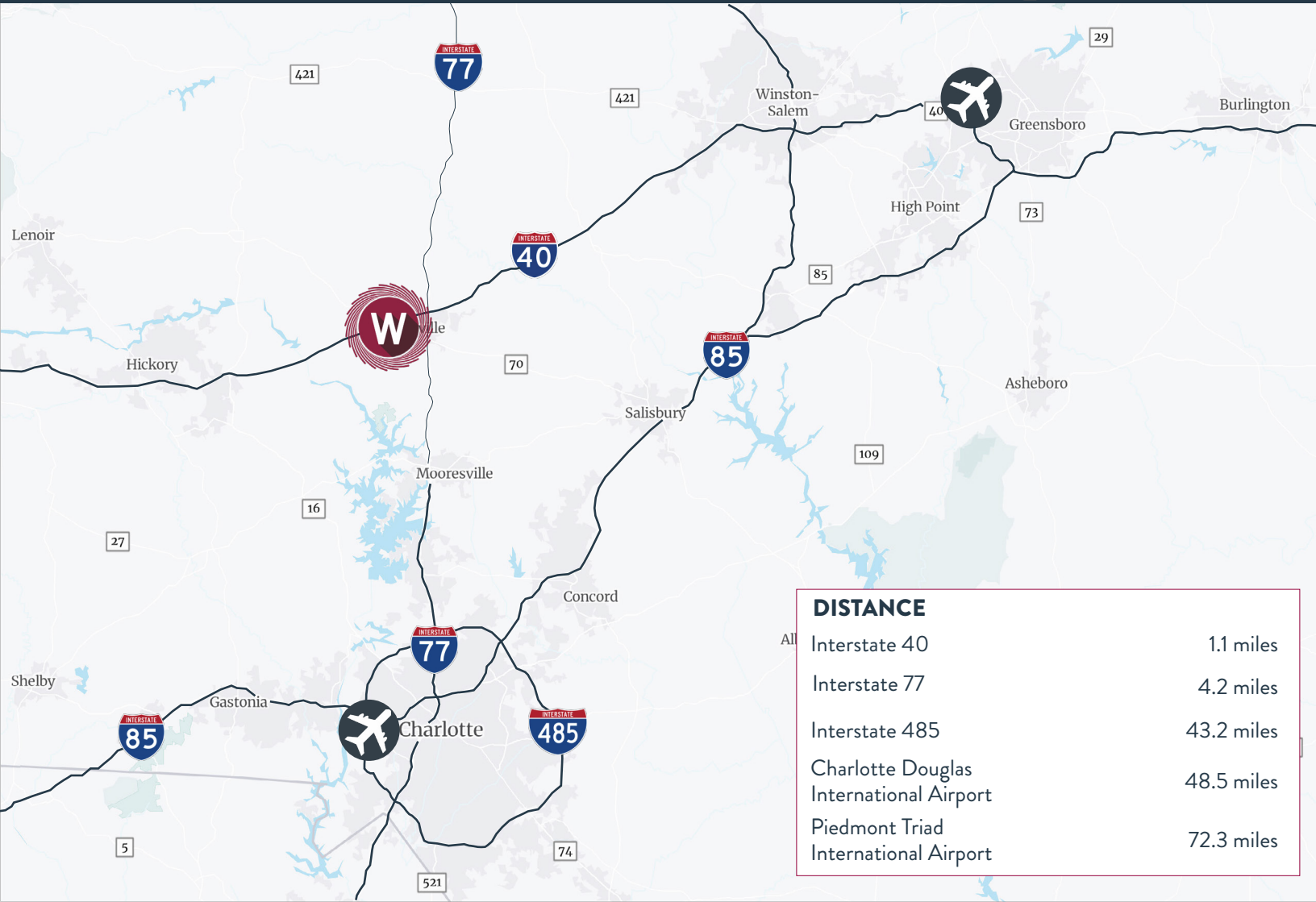
**ZONING**  
Light Industrial

**JOHN ELLIS**  
Senior Associate  
+1 704 409 2914  
john.ellis@colliers.com

**JD ALLEN**  
Senior Associate  
+1 704 409 2368  
jd.allen@colliers.com

**ROB SPEIR, SIOR**  
Executive Vice President  
+1 704 409 2370  
rob.speir@colliers.com

**GRANT MILLER, SIOR**  
Vice Chair  
+1 704 409 2364  
grant.miller@colliers.com



# Colliers

**JOHN ELLIS**  
Senior Associate  
+1 704 409 2914  
john.ellis@colliers.com

**JD ALLEN**  
Senior Associate  
+1 704 409 2368  
jd.allen@colliers.com

**ROB SPEIR, SIOR**  
Executive Vice President  
+1 704 409 2370  
rob.speir@colliers.com

**GRANT MILLER, SIOR**  
Vice Chair  
+1 704 409 2364  
grant.miller@colliers.com

This document has been prepared by Colliers International for advertising and general information only. Colliers International makes no guarantees, representations or warranties of any kind, expressed or implied, regarding the information including, but not limited to, warranties of content, accuracy and reliability. Any interested party should undertake their own inquiries as to the accuracy of the information. Colliers International excludes unequivocally all inferred or implied terms, conditions and warranties arising out of this document and excludes all liability for loss and damages arising there from. This publication is the copyrighted property of Colliers International and/or its licensor(s). ©2026. All rights reserved.



Providing homes for businesses by finding solutions that create value.