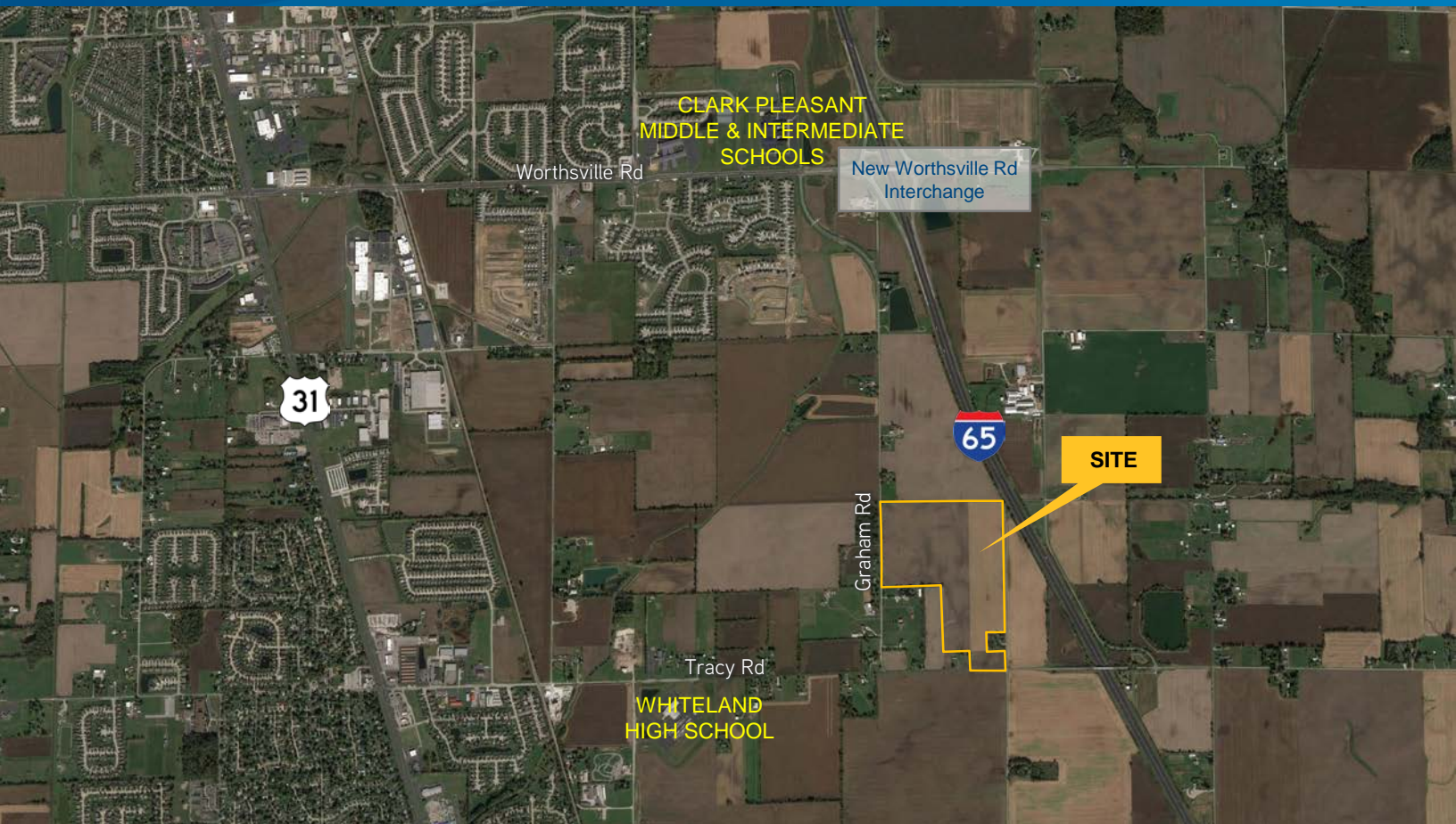


FOR SALE › LAND



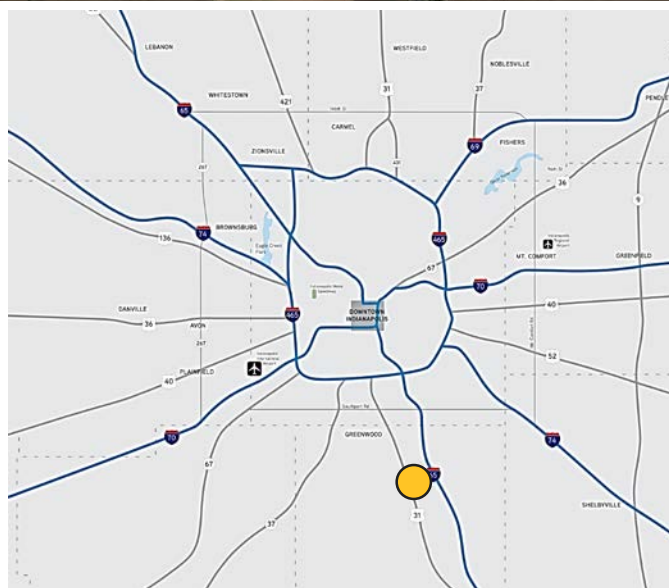
90 Acres at Graham Rd & Tracy Rd

WHITELAND, IN



Property Highlights

- › ± 90 acres available for sale
- › Located between Worthsville Road and Tracy Road, adjacent to I-65 in Whiteland
- › Continued job growth and investment in Johnson County
- › Clark Pleasant Community School System
- › Whiteland provides small town community feel with big city amenities nearby in Greenwood and greater Indianapolis
- › Johnson County population jumped 31.9% from 2000 to 2016
- › Easy access to I-65 via new Worthsville Road interchange



PETE QUINN, SIOR
317 713 2107
pete.quinn@colliers.com

ANDREA HOPPER
317 713 2128
andrea.hopper@colliers.com

COLLIERS INTERNATIONAL
241 N Pennsylvania St, Suite 300
Indianapolis, IN 46204
colliers.com

Aerial Map & Demographics



Johnson County is in a great position for growth!

Johnson County Economic Development Corporation 2016 highlights include:

- > \$44.5 million in new industrial capital investment
- > 100 jobs created
- > 100 jobs retained
- > 11 project successes

DEMOGRAPHICS | POPULATION 2016

Johnson County	151,982
Indy Region	1,951,882
Indiana	6,633,053

UTILITY PROVIDERS:

Sewer	Town of Whiteland
Water	Indiana American
Power	Duke Energy

Contact

PETE QUINN, SIOR
317 713 2107
pete.quinn@colliers.com

ANDREA HOPPER
317 713 2128
andrea.hopper@colliers.com