



Palms of Pasadena Medical Plaza

1615 Pasadena Avenue South, St. Petersburg, Florida 33707

Key Features/Highlights

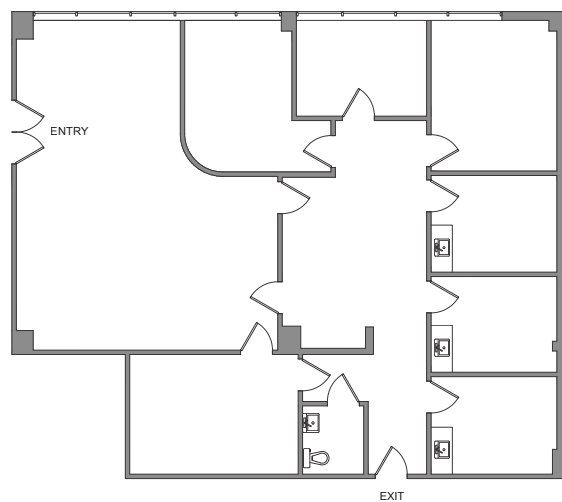
- › Class B, four-story, 45,548 RSF medical office building with upscale lobby, lush landscaping, cafe, on-site property management and information/security desk
- › Adjacent to Palms of Pasadena Hospital
- › Canopy-covered patient drop-off and ample parking adjacent to the building
- › Availability
 - Suite 100: 2,355 RSF
 - Suite 200: 2,515 RSF
 - Suite 220 & 230: 3,489 RSF
 - Suite 280: 2,418 RSF
 - Suite 290: 1,211 RSF
 - Suite 350: 3,182 RSF
 - Suite 370: 1,211 RSF
 - Suite 480: 1,870 RSF

JUAN VEGA CCIM, SIOR
Executive Managing Director
Healthcare & Office Services
813 871 8516
juan.vega@colliers.com

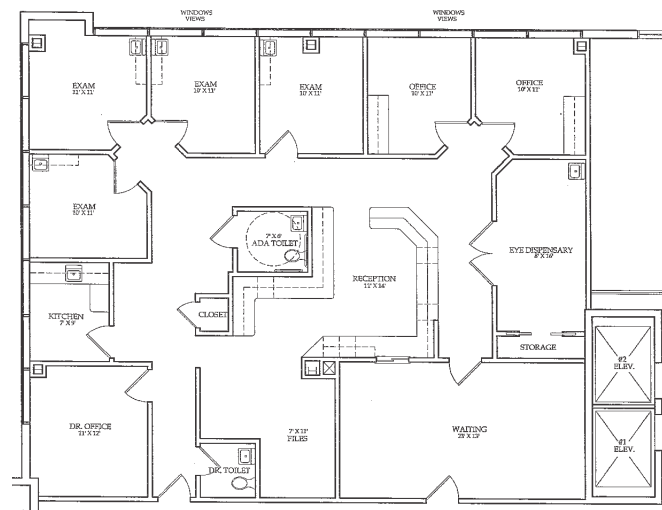


AVAILABILITY

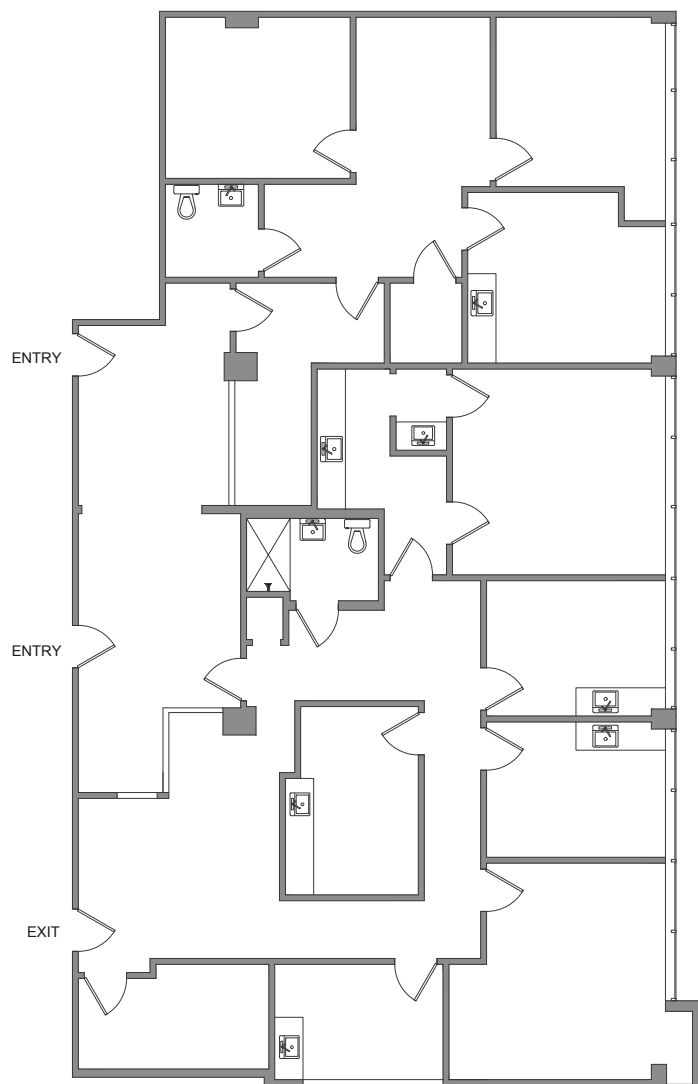
Suite 100 - 2,355 RSF



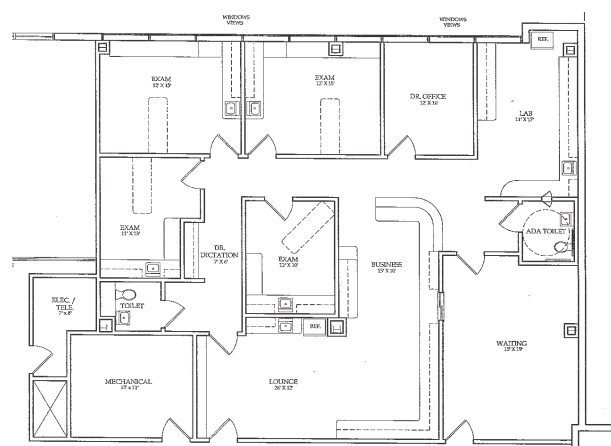
Suite 200 - 2,515 RSF



Suite 220 & 230 - 3,489 RSF

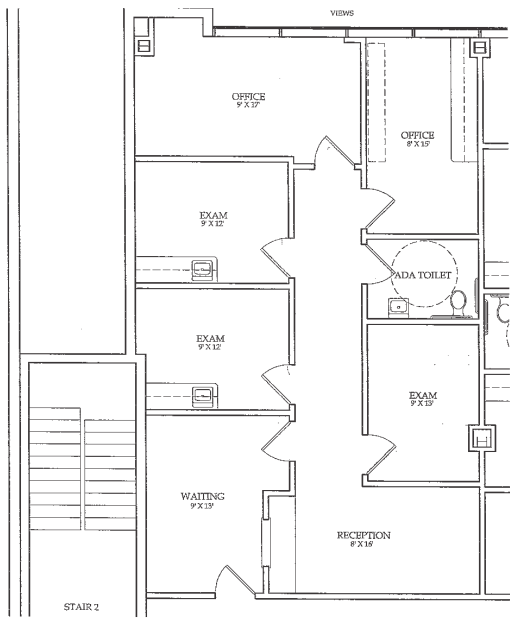


Suite 280 - 2,418 RSF

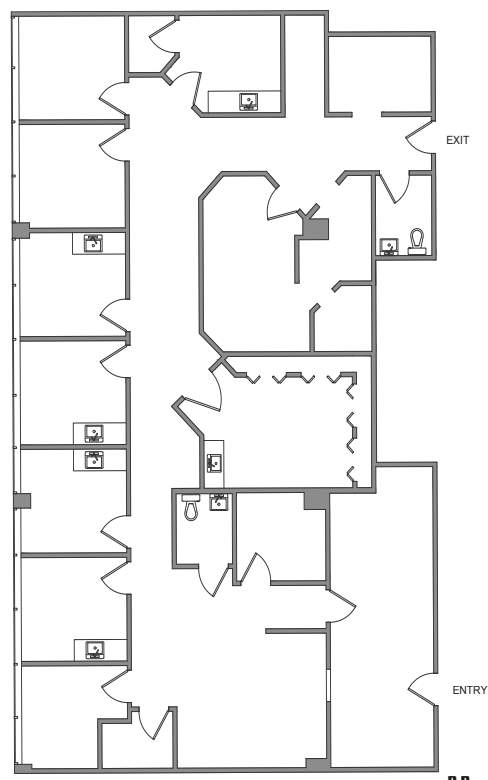


AVAILABILITY

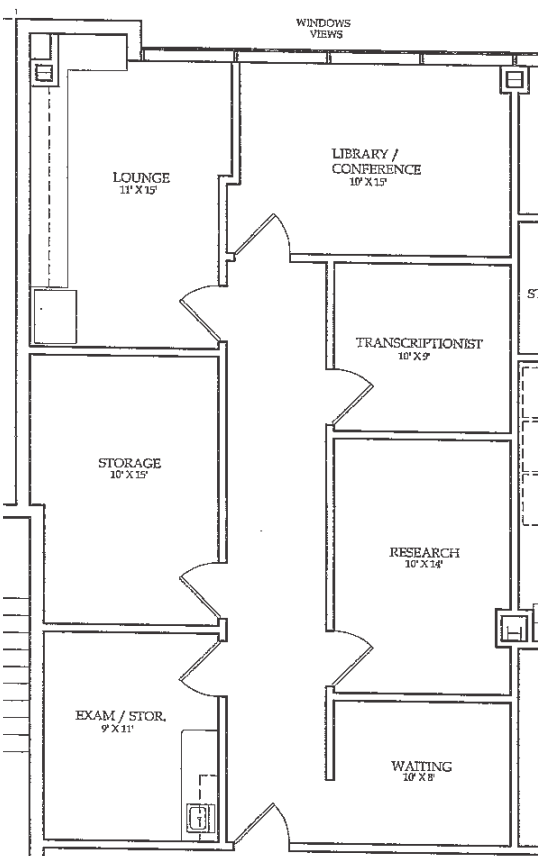
Suite 290 - 1,211 RSF



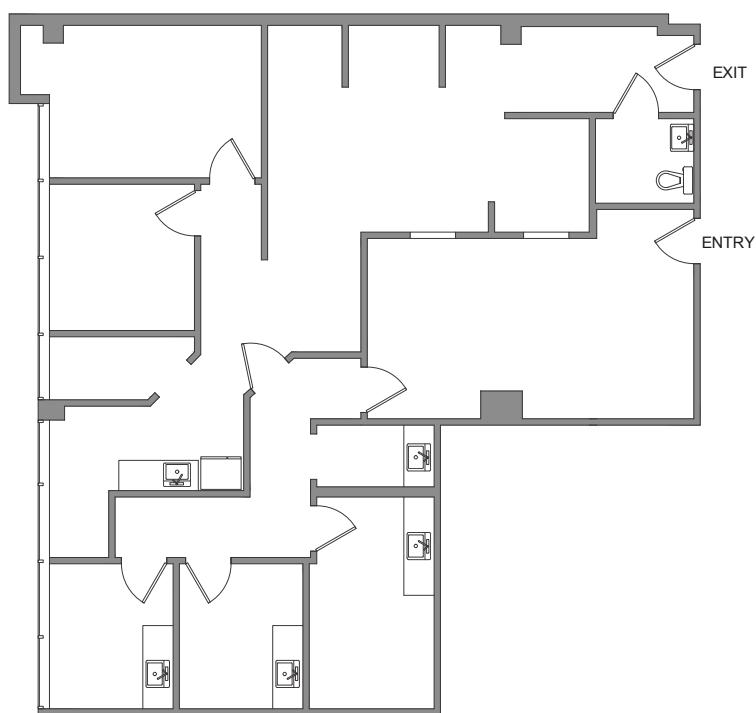
Suite 350 - 3,182 RSF



Suite 370 - 1,211 RSF

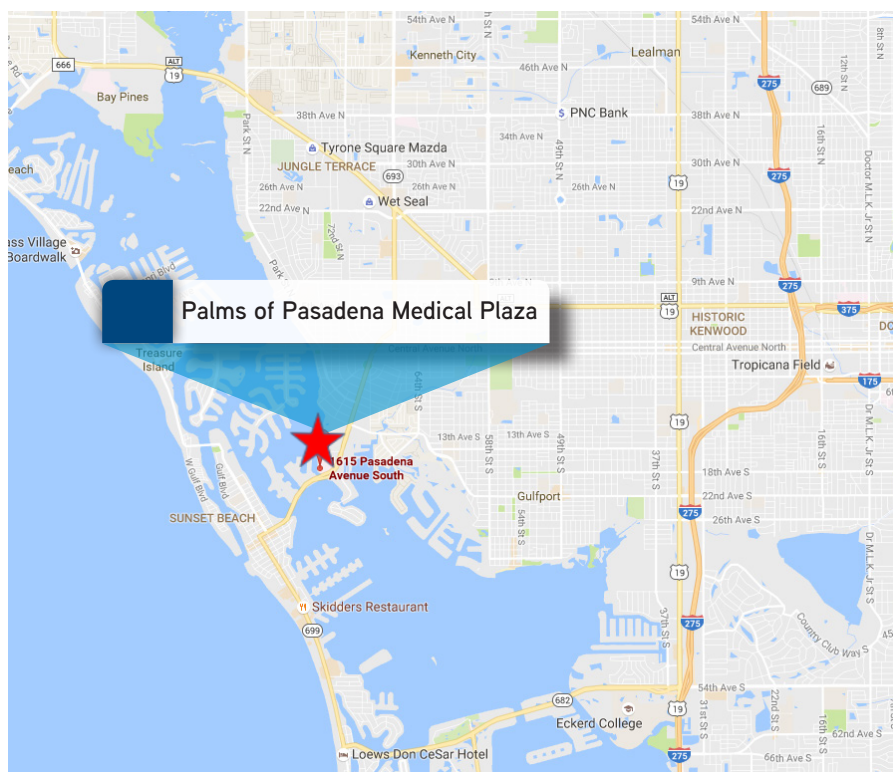


Suite 480 - 1,870 RSF





Location



Contact Us

JUAN VEGA CCIM, SIOR
 Executive Managing Director
 Healthcare & Office Services
 813 871 8516
juan.vega@colliers.com

This document/email has been prepared by Colliers International for advertising and general information only. Colliers International makes no guarantees, representations or warranties of any kind, expressed or implied, regarding the information including, but not limited to, warranties of content, accuracy and reliability. Any interested party should undertake their own inquiries as to the accuracy of the information. Colliers International excludes unequivocally all inferred or implied terms, conditions and warranties arising out of this document and excludes all liability for loss and damages arising there from. This publication is the copyrighted property of Colliers International and/or its licensor(s). © 2016. All rights reserved. This communication is not intended to cause or induce breach of an existing listing agreement.



COLLIERS INTERNATIONAL
 4830 West Kennedy Blvd.
 Suite 300
 Tampa, FL 33609
www.colliers.com